



2023 ▶

SENIOR HIGH SCHOOLS BOOKLET

CO-ORDINATED BY THE WEST AUSTRALIAN FOOTBALL COMMISSION
AND SCHOOL SPORT WA





WELCOME TO THE 2023 SCHOOL FOOTBALL SEASON

The West Australian Football Commission’s (WAFC) vision is to lead and engage all West Australians through a positive experience with Australian Football.

The WAFC sees the delivery of Australian Football as a partnership between schools and community clubs. School sport is integral to the health of the game in WA and in the education and development of all students.

The WAFC works closely with key advisory groups (Education Advisory Group/Primary School Football Advisory Committee/Secondary School Football Advisory Committee) in designing and implementing quality football education and participation programs.

We are fortunate to have wonderful program partners in the West Coast Eagles and the Fremantle Football Club. We thank them for their continued support of school football.

The community football team at the WAFC looks forward to your continued enthusiasm for Australian Football and hopes you and your students enjoy participating in the various football competitions on offer.

On behalf of the WAFC, can I take this opportunity to thank all of the volunteers and staff who play a role in the delivery of school football in 2023. Your time, effort and passion is greatly appreciated by everyone in the football family.

Regan Atkinson
SCHOOLS SPECIALIST

OUR SPONSORS

We would like to thank our sponsors.



CONTENTS

ABOUT FOOTBALL IN WA	3	SAFETY	37
SIMPLY ENERGY CUP	4	OFFICIALS	40
FREO DOCKERS CUP	14	CODES OF CONDUCT	41
EAGLES SCHOOLBOYS CUP	24	COACHING	43
STAFF CONTACTS	33	INVESTIGATION PROCEDURES	51
SPIRIT OF JUNIOR FOOTBALL IN WA	35	TALENT	52
GAME DAY PLAYER EVEN UP	35	UMPIRING	58
VILIFICATION POLICY	36		





ABOUT FOOTBALL IN WA

The West Australian Football Commission is the caretaker of football throughout the State and responsible for the overall development of the game.

The rich history of football in the community of Western Australia stretches back to 1885. Today it is the most popular sporting code in Western Australia with more than 330,000 active participants each weekend during the season. This is more than double any other sport. On top of this football clinics are provided to approx. 200,000 West Australian Children every year throughout our schools and communities across our state.

The WAFC plays an important role in funding the ongoing development of football in all communities. This ensures that football is the best resourced sporting code in the State and can have the most active role in building better communities through various development programs.

The WAFC is a not for profit sports association. It is incorporated under the Associations Incorporation Act and governed by a volunteer board that oversees the operation of all football activities throughout the State.

The WAFC's role includes ownership of the State's two AFL teams - West Coast Eagles and Fremantle Football Club (Dockers), guiding the West Australian Football League (State league competition), overseeing community football, managing umpiring and football development through participation and the talent pathway. Most importantly the WAFC plays a key guidance role in the ongoing enhancement of the District Development model.

This results in a significant social benefit and the creation of better communities through the active promotion of the sport and its associated values of teamwork, responsibility, respect, leadership, commitment and community participation. Advocating healthy participation for every player, volunteer, official, administrator, coach, umpire and spectator is at the forefront of our strategic priorities.



SENIOR SCHOOLBOYS CUP 2023





CONTENTS

Foreword	5	Divisions	10
2023 Senior Schoolboys Cup Timeline	6	The Legends	11
Competition Format	6	Champion Schools	12
Regulations	7	Secondary School Football Advisory Committee	13



On behalf of School Sport Western Australia, the West Australian Football Commission and the competition coordinators I thank you for your support of the Senior Schools AFL competitions.

We aim to deliver quality competitions which are accessible by all schools that cater for a range of school sizes and ability levels. We thank the staff who have taken on roles coaches, managers, medical staff, bus drivers and support staff. Your time, expertise and commitment is much appreciated.

I would also like to thank and acknowledge Glen Jakovich, Ross Glendinning and Bill Walker for their continued patronage of the Senior Schoolboys Cup competition.

Finally, I wish all teams a rewarding year in the Senior Schoolboys Cup competition.

Justin Burt
SECONDARY SCHOOLS FOOTBALL ADVISORY COMMITTEE CHAIR



2023 SENIOR SCHOOLBOYS CUP TIMELINE

DAY	DATE	EVENT
Wednesday	February 1	Term 1 Commences
Friday	March 3	Nominations Close
Wednesday	March 29	Confirmation of Division / Draft Fixtures
Monday	April 3	Final Fixtures Published
Friday	April 7	End Term 1
Monday	April 24	Term 2 Commences
Wednesday	May 3	Fixtures Commence
Wednesday	June 28	Top Division Grand Final (Venue TBC)
Wednesday	June 28	Jakovich Division Grand Final (Venue TBC)
Monday	June 26	SHS Country Week Commences (Walker Division)
Friday	June 30	Walker Division Grand Final (SHS Country Week)

COMPETITION FORMAT

- Schools are traditionally arranged into district pools and the competition is divided into three metropolitan divisions (Top, Jakovich, Glendinning).
- The Secondary School Football Advisory Committee, which is comprised of teachers and secondary school stakeholders reviews all nominations and reserves the right to change the division that a school may have nominated for to achieve a balanced competition across all divisions.
- Country Schools: Your Regional Manager will confirm carnival date(s) by the end of Term One

DIVISIONS:

TOP DIVISION (A Grade): Strong football schools seeking quality competition with games played across regions.

GLEN JAKOVICH DIVISION (B Grade): 15-a-side competition for schools of medium strength, seeking quality 'local' competition. Finals are played across regions.

ROSS GLENDINNING DIVISION (C Grade): 15-a-side competition specifically designed for schools entering the competition for the first time or schools with a limited football background. There are NO finals in this division.

BILL WALKER DIVISION: Only for schools who participate in the 'A' section at Senior High School Country Week.

REGION COORDINATORS

Each Regional Coordinator will:

- arrange schools into appropriate divisions;
- set fixtures for that region;
- collate results after each round of fixtures;
- maintain a premiership table for each division;
- be a contact for all schools within that region for any queries; and
- email weekly match results to the WAFC for publication on the website.

UMPIRES

The WAFC will arrange umpires for all Top Division matches and for all Jakovich Division finals. It is the responsibility of each school to provide one umpire for all Jakovich Division pool matches and all Glendinning Division matches.

Schools may use staff or qualified, accredited students as umpires. Any student umpires used must be at least the same age as the players, or older than the players. If a student umpire is unaccredited, then as a minimum, they should complete the \$15.00 online Umpire Introductory Course found at: <https://www.afl.com.au/umpires/courses>. It is recommended that any teachers umpiring their games complete this online course too. If a school would like to book a qualified district umpire, please contact Sport Staff One on 1300 776 776.

For all matches whereby the WAFC allocates umpires to, schools must provide at least 24 hours' notice to either their Division Coordinator or the WAFC Schools Specialist for any change of game details. This includes any form of fixture rescheduling or cancellation, including change of date, match time or venue. **Failure to provide at least 24 hours' notice will result in the school being charged the match fees of the umpires for that game, at the conclusion of the competition.**

MATCH DAY

Matches will be played after school on WEDNESDAYS at 4pm or as close to this time as possible. **CHANGES TO GAME TIME / MATCH DAY SHOULD BE COORDINATED BETWEEN SCHOOLS ONLY AFTER NOTIFYING THE REGIONAL COORDINATOR.**

LENGTH OF COMPETITION

The first games will be played on **Wednesday 3 May**. The number of games will depend largely upon the number of schools in each Division. Schools are asked to check their exam timetable before nominating to ensure there are no obvious clashes between fixtures and upper school exams.

FINALS

- Top Division Grand Final will be played on Wednesday 28 June (venue TBC)
- Jakovich Division Grand Final will be played on Wednesday 28 June (venue TBC)

ALL SCHOOLS MUST SUBMIT A FULL TEAM LIST PRIOR TO THE COMMENCEMENT OF FINALS TO THEIR REGIONAL COORDINATOR AND THE WAFC.

FIXTURES/RESULTS/LADDERS - https://websites.sportstg.com/nf/assoc_page.cgi?c=1-5018-0-0-0&a=COMPS

FEES:

TOP DIVISION: \$200 Per team

GLEN JAKOVICH DIVISION: \$50 per team

ROSS GLENDINNING DIVISION: no fee

BILL WALKER DIVISION: no fee

Fees cover administration and umpiring costs.

REGULATIONS

GROUNDS

Matches are to be played at the home schools nominated oval. Where a school has nominated a junior football club oval or council oval as its home ground, it is that school's responsibility to ensure that the ground is ready for each home game, and liaise with the respective club or council accordingly.

Ovals for Youth age matches can range between 135m to 185m in length and 110m to 155m in width. **Goal and behind posts must be padded. Cricket pitches are to be covered. It is mandatory that the home team be responsible for goal post padding so that both goal and behind posts are covered. A game will not proceed where any posts and cricket pitches are uncovered (It is recommended the away team still brings goal post padding to games).**

Home teams are responsible for all ground markings – centre and goal squares and boundary line. Visiting schools need to inspect the oval prior to the commencement of the game to make sure it is suitable to proceed. Any concerns should be highlighted to the umpire prior to play commencing. The umpire will have the final say as to whether the game will proceed. **It is recommended that all schools use the WAFC endorsed JLT match day checklist. JLT match day checklists can be obtained from ratkinson@wafc.com.au**

SAFETY

Spectators are to be kept away from the boundary line and goal areas. Control of spectators is the responsibility of the competing schools. **Schools must have a first aid kit including ice or ice packs, along with a stretcher at the game.** Access to mobile phone communication is mandatory. If a school has a nurse, their involvement both in training school sports trainers and/or being at the game should be encouraged.

Umpire(s) are to check teams before each game for nails, earrings, necklaces, boots etc. Any item considered dangerous is to be removed.

PUBLIC LIABILITY

The WAFC has arranged Public Liability Insurance to a maximum of \$20,000,000 to cover its legal liabilities. The WAFC expects each school involved in Australian Football programs to maintain public liability insurance to sufficiently cover its legal liabilities. At its own discretion each school or individual may want to consider purchasing personal accident insurance to protect it against claims for non-Medicare medical expenses arising from this Australian Football program, or any other school program.

OVERSEER

The conduct of this competition relies heavily upon the attitude of the coach. Coaches are to report to the WAFC on any behaviour detrimental to the Codes of Conduct of the competition. Should a SSFAC member be in attendance at a fixture, that person will act as the game overseer. The Advisory Committee members have the right to remove any player in breach of the Code of Conduct from the field of play. They may also lodge a request to investigate any incident outside of the rules of the game.



CHANGE ROOMS

Change rooms are to be allocated by the home team if available. The cleaning up of these rooms and the ground is the responsibility of both teams.

TEAMS

Top Division:	18 per team, minimum 15, maximum 7 reserves
Jakovich Division:	15 per team, minimum 12, maximum 7 reserves
Glendinning Division:	15 per team, minimum 12, maximum 7 reserves
Walker Division:	18 per team, minimum 15, maximum 7 reserves

***If a team has less than 15, the Game Day Player Even Up rules apply.**

****Where schools enter two or more teams, no player may play down after three games in the higher division. Furthermore, if the higher division team has a bye, all players who played in the higher division team the previous week are ineligible to play in the lower division team in the week of that bye.**

RULES

Rules for all divisions are as per the Laws of Australian Football.

UNIFORMS

All teams are to be in uniform playing gear including:

- Numbered school jumpers
- Uniform football shorts/socks

STARTING TIMES AND DURATION OF MATCHES

All games must start at 4:00pm or as close to this time as possible. Games will be of two 25 minute halves (no time on) with a five minute interval at half time.

Prior to the Game

The home team is to line up in the centre of the ground and wait for the away team to line up opposite. Players, coaches and umpires are to shake hands, both before and after the game.

At the Completion of the Game

The two coaches are to bring teams together to make any appropriate comments and to complete the match report. The umpires are requested to participate. **THE COMPLETED MATCH REPORT IS TO BE EMAILED TO YOUR REGION COORDINATOR BY THE HOME TEAM.**

CONDITIONS OF PLAY

Every endeavour must be made to ensure games are played at the fixtured time and place. If a team forfeits a match or if conditions are not met, a 60-point win will be awarded to the non-offending team, plus four premiersip points.

MATCH POINTS

Four points for a win, two for a draw and zero for a loss.

If a winning teams margin exceeds 60 points the team will only be credited with a maximum of 60 points winning margin. This does not apply in the Top Division.

AGE OF PLAYERS

To be eligible for selection students must:

- Be a full time student at a recognised DoE educational institution
- 18 Years and Under - be 18 and under as at 31 December

Students in Year 8 and 9 are not permitted to participate in this competition. A lower school competition (Eagles Schoolboys Cup) exists to meet the needs of these students. Issues relating to liability rest squarely with the school. It is the schools responsibility to ensure that this rule is adhered to and schools are liable for any consequences of not doing so.

MATCH BALL (SIZE 5 AFL STANDARD)

The home team will provide the match ball. The away team is to provide a suitable spare football. The ball will be a WAFC agreed sponsored brand.

DRAWN MATCHES

A draw will stand in home and away matches and two points will be awarded to each team, but not in finals. In all finals, five minutes each way extra time will be played to determine the winner. If still a draw at the end of five minutes each way, then the golden point rule will apply, whereby first team to score a goal or a behind wins the match. If poor light or circumstances prevent play from continuing, the match shall be re-scheduled.

A match will be deemed a final when it is an elimination match, i.e. is not part of the regular weekly fixtures. A SSFAC member will make any decision on drawn matches and in their absence the responsibility will fall on the Field Umpire(s). Refusal by any team to play five minutes each way will be deemed a **forfeit** on their behalf and the match will be awarded to the opposing side.

PRIVACY POLICY

Team photographs or other images may be produced during the football season by the governing body (WAFC) and may be utilised for the promotion and development of football by the governing body. Completion and lodgment of the Nomination Form indicates acceptance of this policy.





DIVISIONS

TOP DIVISION

Region Coordinator – Thomas Moscarda – 0439 644 845
Results to be EMAILED by the HOME TEAM before 10:30am on Thursday morning.
Email: thomas.moscarda@education.wa.edu.au

GLEN JAKOVICH DIVISION – WEST PERTH, SUBIACO, CLAREMONT, EAST PERTH & SWANS

Region Coordinator – Justin Burt – 0413 510 912
Results to be EMAILED by the HOME TEAM before 10:30am on Thursday morning.
Email: justin.burt@education.wa.edu.au

GLEN JAKOVICH DIVISION – PERTH, EAST FREMANTLE, SOUTH FREMANTLE & PEEL

Region Coordinator – Steve Pendleton – 0417 968 765
Results to be EMAILED by the HOME TEAM before 10:30am on Thursday morning.
Email: steve.pendleton@cewa.edu.au

ROSS GLENDINNING DIVISION

Region Coordinator – Regan Atkinson – 0437 587 161
Results to be EMAILED by the HOME TEAM before 10:30am on Thursday morning.
Email: ratkinson@wafc.com.au

GLEN JAKOVICH DIVISION – ACC – SAS

Region Coordinator – Trent Sharpe – 0408 958 415
Results to be EMAILED by the HOME TEAM before 10:30am on Thursday morning.
Email: trent.sharpe@cewa.edu.au

GLEN JAKOVICH DIVISION – ACC – CAS

Region Coordinator – Trent Sharpe – 0408 958 415
Results to be EMAILED by the HOME TEAM before 10:30am on Thursday morning.
Email: trent.sharpe@cewa.edu.au

THE LEGENDS

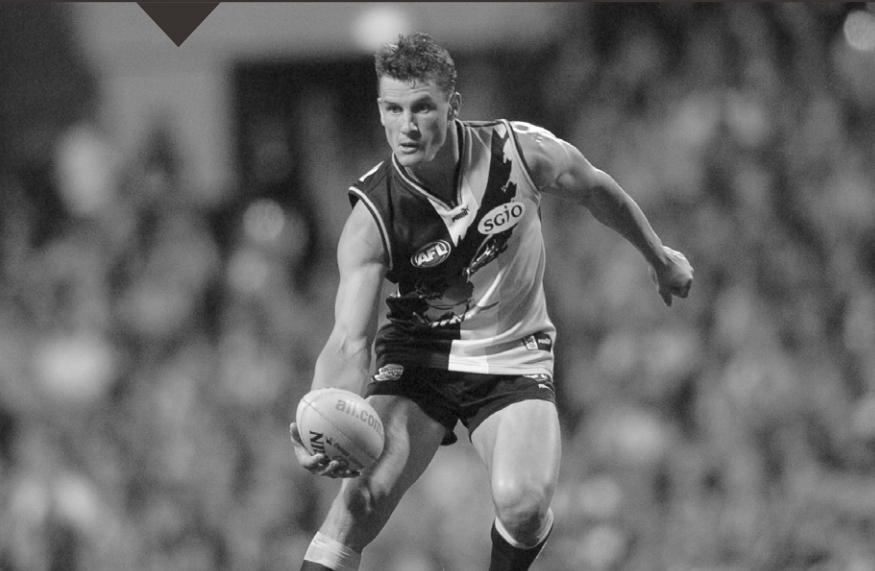


ROSS GLENDINNING (EAST PERTH, NORTH MELBOURNE, WEST COAST EAGLES)

A superb key position player, Glendinning established an Australia-wide reputation for excellence as a key defender and forward. 286 games (56 East Perth, 190 North Melbourne, 40 West Coast Eagles) - Brownlow Medallist 1983, runner up 1982 – North Melbourne Fairest & Best 1982, 1983 - Inaugural captain of the West Coast Eagles, leading West Coast goalkicker 1987, 1988 – Kicked 327 goals. He is a member of the West Australian & Australian Football Halls of Fame.

GLEN JAKOVICH (SOUTH FREMANTLE, WEST COAST EAGLES)

In 1990 Glen Jakovich had the unique distinction of playing in the WA Teal Cup team, earning representation in the WAFL State team which played South Australia at Football Park and then was selected in the WA State of Origin team. While Jakovich made centre half back his own during the peak of a stellar senior career, it was at centre half forward that he made an impression in the formative years. 276 games - Club Champion 1993, 1994, 1995, 2000 - All-Australian 1994-1995 - West Coast Eagles Premiership player 1992, 1994 - West Coast Eagles player of the finals 1995, 1997 - West Coast Eagles Rookie of the Year 1991 - Runner-up South Fremantle Fairest & Best 1991. He is a member of the West Australian & Australian Football Halls of Fame.



BILL WALKER (SWAN DISTRICTS)

Bill created his reputation as a champion rover during a 305 game career with Swan Districts between 1961 and 1976 - Sandover Medallist 1965, 1966, 1967, 1970 - Swan Districts' Fairest & Best 1965, 1966, 1968, 1969, 1970 - Swan Districts Premiership player 1961-1963 – 21 State games for Western Australia – Swan Districts Captain/Coach 1969-1971 – Swan Districts Captain 1972-1975 – Simpson Medallist 1967 - He is a member of the AFL's Hall of Fame, the West Australian & Australian Football Halls of Fame.

Photos courtesy of Alan East

CHAMPION SCHOOLS

	Top Division	Jakovich Division	Walker Division	Glendinning Division
1988	Hamilton SHS	Eastern Hills SHS	N/A	N/A
1989	Hamilton SHS	Governor Stirling SHS	N/A	N/A
1990	Warwick SHS	La Salle College	Busselton SHS	N/A
1991	Wesley College	Willetton SHS	Albany SHS	North Lake SHS
1992	Newman College	Kent St SHS	Narrogin SHS	Thornlie SHS
1993	Newman College	Corpus Christi College	Narrogin SHS	John Curtin SHS
1994	Corpus Christi College	Mount Lawley SHS	Narrogin SHS	Cecil Andrews SHS
1995	Corpus Christi College	John XXII College	Narrogin Ag. College	CBC Fremantle
1996	Corpus Christi College	Lynwood SHS	Narrogin Ag. College	Cecil Andrews SHS
1997	Mazenod College	Lockridge SHS	Narrogin SHS	Clontarf AC
1998	Mazenod College	Rossmoyne SHS	Narrogin Ag. College	Maddington SHS
1999	Governor Stirling SHS	Hamilton SHS	Narrogin SHS	Clontarf AC
2000	Clontarf Aboriginal College	Prendiville Catholic College	Geraldton Senior College	Craigie SHS
2001	Clontarf Aboriginal College	John XXIII College	Cunderdin Ag. College	Clontarf AC
2002	Carine SHS	Clontarf Aboriginal College	Manjimup SHS	Leeming SHS
2003	Clontarf Aboriginal College	Mandurah Senior College	Manjimup SHS	Winthrop BC
2004	Clontarf Aboriginal College Mazenod College	Winthrop Baptist College	Geraldton SC	Leeming SHS
2005	Clontarf Aboriginal College	Sacred Heart College	Geraldton SC	John Forrest SHS
2006	Clontarf Aboriginal College	Willetton SHS	Mandurah SC	St Stephens Duncraig
2007	Clontarf Aboriginal College	CBC Fremantle	Newton Moore SHS	N/A
2008	Sacred Heart College	CBC Fremantle	Pinjarra SHS	N/A
2009	Mandurah Senior College	La Salle College	Mandurah Senior College	N/A
2010	Governor Stirling SHS	Carine SHS	Albany SHS	N/A
2011	CBC Fremantle	Winthrop Baptist College	Albany SHS	N/A
2012	Clontarf Aboriginal College	Mandurah Catholic College	Albany SHS	N/A
2013	Clontarf Aboriginal College	Corpus Christi College	Newton Moore SHS	N/A
2014	Darling Range Sports College	Warwick SHS	Great Southern GS	N/A
2015	Darling Range Sports College	Mater Dei College	Newton Moore SHS	N/A
2016	Darling Range Sports College	La Salle College	Newton Moore SHS	N/A
2017	CBC Fremantle	Churchlands SHS	Bunbury SHS	N/A
2018	Emmanuel Catholic College	Mater Dei College	Albany SHS	N/A
2019	Churchlands SHS	Newman College	Manea Senior College	N/A
2020	Darling Range Sports College	SEDA	No Champion- COVID-19	N/A
2021	Comet Bay College	La Salle College	No Champion- COVID-19	N/A
2022	Churchlands SHS	Mandurah Catholic College,	Bunbury Catholic College	N/A

SECONDARY SCHOOL FOOTBALL ADVISORY COMMITTEE

Name	Position	Phone	Email
Justin Burt	Chairman	0413 510 912	justin.burt@education.wa.edu.au
Regan Atkinson	WAFC	0437 587 161	ratkinson@wafc.com.au
Peter Smith	SSWA Director of Sport	0409 114 422	peter.r.smith@educaton.wa.edu.au
Region Coordinators:			
Thomas Moscarda	Top Division	0439 644 845	thomas.moscarda@educaton.wa.edu.au
Justin Burt	Jakovich - WP, Subi, Cl, EP & Swans	0413 510 912	justin.burt@education.wa.edu.au
Steve Pendleton	Jakovich - P, EF, SF & Peel	0417 968 765	steve.pendleton@cewa.edu.au
Regan Atkinson	Glendinning Division	0437 587 161	ratkinson@wafc.com.au
Trent Sharpe	Jakovich - ACC- SAS & CAS	0408 958 415	trent.sharpe@cewa.edu.au





FRED DOCKERS CUP 2023





CONTENTS

Freo Dockers Cup 2023	15	Champion Schools	22
2023 Freo Dockers Cup Timeline	16	Year 7-9 Dockers Cup	22
Competition Format	17	Schoolgirls Committee	22
Rules & Regulations	18	The Patrons	23
Divisions	21		

FREO DOCKERS CUP 2023

The Freo Dockers Cup aims to provide a range of AFL experiences to girls who would not otherwise have the opportunity to be involved in the sport. Entering its 28th year the competition is coordinated by the West Australian Football Commission and the Schoolgirls Advisory Committee. Participation in the Freo Dockers Cup has become an important step for girls to become involved in community youth or senior women's competitions.

FREO DOCKERS CUP COMMITTEE:

The committee has representatives from:

- Government and Non-Government Schools
- West Australian Football Commission
- School Sport WA and the Associated & Catholic Colleges of WA

This Committee's charter is to promote and administer the competition, its regulations, rules and format. The Committee provides a forum for discussion and debate on issues relating to the competition and youth girls football development.



2023 FRED DOCKERS CUP TIMELINE

DAY	DATE	EVENT
Wednesday	February 1	Term 1 Commences
Friday	March 3	Nominations Close
Wednesday	March 29	Confirmation of Division / Draft Fixtures
Monday	April 3	Final Fixtures Published
Friday	April 7	End Term 1
Monday	April 24	Term 2 Commences
Tuesday	May 2	Fixtures Commence
Monday	June 26	SHS Country Week Commences (Vanderweide Division)
TBC	TBC	Moore & White Division Grand Finals (Venues & Dates TBC)
Friday	June 30	End Term 2 / Vanderweide Division Grand Final (SHS Country Week)



COMPETITION FORMAT

- Games are played over 2 x 20 minute halves on Tuesdays after-school during Term 2.
- Schools are traditionally arranged into district pools and the competition is divided into two metropolitan divisions (Moore & White)
- The Schoolgirls Advisory Committee reviews all nominations and reserves the right to change divisions to achieve a balanced competition
- Country Schools – All competitions are coordinated by your Regional Manager. Schools will be advised of all carnival days(s) by the end of Term One

MOORE DIVISION (A Grade): Strong football schools seeking quality competition with games played across regions.

WHITE DIVISION (B Grade): Teams are split into district pools to play against other schools in their 'local' area. After the pool games the top teams will progress to the finals across districts.

VANDERWEIDE DIVISION: Only for schools who participate at Senior High School Country Week.

REGIONAL COORDINATORS

Each regional Coordinator will:

- arrange schools into appropriate divisions
- set fixtures for that region
- collate results after each round of fixtures
- maintain a premiership table for each division
- be a contact for all schools within that region for any queries; and
- email weekly match results to the WAFC for publication on the website.

UMPIRES

The WAFC will arrange umpires for all Moore Division matches and for all White Division finals. It is the responsibility of the HOME school to provide one umpire for all White Division pool matches.

Schools may use staff or qualified, accredited students as umpires. Any student umpires used must be at least the same age as the players, or older than the players. If a student umpire is unaccredited, then as a minimum, they should complete the \$15.00 online Umpire Introductory Course found at: <https://www.afl.com.au/umpires/courses>. It is recommended that any teachers umpiring their games complete this online course too. If a school would like to book a qualified district umpire, please contact Sport Staff One on 1300 776 776.

For all matches whereby the WAFC allocates umpires to, schools must provide at least 24 hours' notice to either their Division Coordinator or the WAFC Schools Specialist for any change of game details. This includes any form of fixture rescheduling or cancellation, including change of date, match time or venue. **Failure to provide at least 24 hours' notice will result in the school being charged the match fees of the umpires for that game, at the conclusion of the competition**

MATCH DAYS

Matches will be played after school on Tuesdays at 4pm or as close to this time as possible. **CHANGES TO GAME TIME / MATCH DAY SHOULD BE COORDINATED BETWEEN SCHOOLS ONLY AFTER NOTIFYING THE REGION COORDINATOR.**

LENGTH OF COMPETITION

The first games will be played on Tuesday 2 May. The number of games will depend largely upon the number of schools in each Division.

FINALS

The dates and venues for the Moore Division Grand Final and White Division Grand Final will be confirmed at a later date. It is likely these matches will be played in late Term 2 for 2023.

FIXTURES / RESULTS / LADDERS

Details for all regions and divisions can be viewed via the WA Football website – https://websites.sportstg.com/nf/assoc_page.cgi?c=1-5018-0-0-0&a=COMPS

FEES

Moore Division: \$200 per team

White Division: \$50 per team

Fees cover administration and umpiring costs.

RULES & REGULATIONS

GROUNDINGS

Matches are to be played at the home schools nominated oval. Where a school has nominated a junior football club oval or council oval as its home ground, it is that school's responsibility to ensure that the ground is ready for each home game, and liaise with the respective club or council accordingly.

Ovals for Youth age matches can range between 135m to 185m in length and 110m to 155m in width. **Goal and behind posts must be padded. Cricket pitches are to be covered. It is mandatory that the home team be responsible for goal post padding so that both goal and behind posts are covered. A game will not proceed where any posts and cricket pitches are uncovered (It is recommended the away team still brings goal post padding to games).**

Home teams are responsible for all ground markings – centre and goal squares and boundary line. Visiting schools need to inspect the oval prior to the commencement of the game to make sure it is suitable to proceed. Any concerns should be highlighted to the umpire prior to play commencing. The umpire will have the final say as to whether the game will proceed. **It is recommended that all schools use the WAFC endorsed JLT match day checklist. JLT match day checklists can be obtained from ratkinson@wafc.com.au.**

SAFETY

Spectators are to be kept from the boundary line and goal areas. Control of spectators is the responsibility of the competing schools. **Schools must have a first aid kit including ice or ice packs, along with a stretcher at the game.** Access to mobile phone communication is mandatory. If a school has a nurse, their involvement both in training school sports trainers and/or being at the game should be encouraged.

Umpire(s) are to check teams before each game for nails, earrings, necklaces, boots etc. Any item considered dangerous is to be removed.

PUBLIC LIABILITY

The WAFC has arranged Public Liability Insurance to a maximum of \$20,000,000 to cover its legal liabilities. The WAFC expects each school involved in Australian Football programs to maintain public liability insurance to sufficiently cover its legal liabilities. At its own discretion each school or individual may want to consider purchasing personal accident insurance to protect it against claims for non-Medicare medical expenses arising from this Australian Football program, or any other school program.

OVERSEER

The conduct of this competition relies heavily upon the attitude of the coach. Coaches are to report to the WAFC on any behaviour detrimental to the Codes of Conduct of the competition. Should a SSFAC member be in attendance at a fixture, that person will act as the game overseer. The Advisory Committee members have the right to remove any player in breach of the Code of Conduct from the field of play. They may also lodge a request to investigate any incident outside of the rules of the game.

CHANGE ROOMS

Change rooms are to be allocated by the home team if available. The cleaning up of these rooms and the ground is the responsibility of both teams.

TEAMS

Moore Division:	18 per team, minimum 12, unlimited reserves
White Division:	15 per team, minimum 12, unlimited reserves
VanderWeide Division:	15 per team, minimum 12, unlimited reserves

***If a team has less than 15, the Game Day Player Even Up rules apply. There will be an unlimited interchange for all games, including finals.**

****Where schools enter two or more teams, no player may play down after three games in the higher division. Furthermore, if the higher division team has a bye, all players who played in the higher division team the previous week, are ineligible to play in the lower division team in the week of that bye.**

RULES

Rules for all divisions are as per the Laws of Australian Football.



THE BALL

A size 4 leather or synthetic football should be used. Each home team will provide the match ball. The away team is to provide a suitable spare football. The ball will be a WAFC agreed sponsored brand.

TACKLING

Tackling is permitted as per the Laws of Australian Football however: No player shall be deliberately slung, dumped or thrown to the ground via any tackle.

UNIFORMS

All teams are to be in uniform playing gear including:

- Numbered school jumpers
- Uniform football shorts/socks

STARTING TIMES AND DURATION OF MATCHES

All games must start at 4:00pm or as close to this time as possible. Games will be of two twenty (20) minute halves (no time on) with a five minute interval at half time.

Prior to the Game

The home team is to line up in the centre of the ground and wait for the away team to line up opposite. Players, coaches and umpires are to shake hands, both before and after the game.

At the Completion of the Game

The two coaches are to bring teams together to make any appropriate comments and to complete the match report. The Umpires are requested to participate. **THE COMPLETED MATCH REPORT IS TO BE EMAILED TO YOUR REGIONAL COORDINATOR BY THE HOME TEAM.**

CONDITIONS OF PLAY

Every endeavour must be made to ensure games are played at the fixtured time and place. If a team forfeits a match or if conditions are not met, a 30-point win will be awarded to the non-offending team, plus four premiership points.

GAME POINTS

4 points for a win, 2 for a draw and zero for a loss.

If a winning team's margin exceeds 30 points, they will only be credited with a maximum of a 30-point winning margin (This does not apply in the Moore Division).

DRAWN MATCHES

A draw will stand in home and away matches and two points will be awarded to each team, but not in finals. In all finals, five minutes each way extra time will be played to determine the winner. If still a draw at the end of five minutes each way, then the golden point rule will apply, whereby first team to score a goal or a behind wins the match. If poor light or circumstances prevent play from continuing, the match shall be re-scheduled to the first mutually available Tuesday after the drawn game.

A match will be deemed a final when it is an elimination match i.e. is not part of the regular weekly fixtures. An SSAC member will make any decision on drawn matches and in their absence the responsibility will fall on the Central Field Umpire(s). Refusal by any team to play five minutes each way will be deemed a forfeit on their behalf and the game will be awarded to the opposing side.

AGE OF PLAYERS

To be eligible for selection students must:

- Be a full time student at a recognised DoE educational institution
- 18 Years and Under - be 18 and under as at 31 December

Players must be full-time students at the school in the year of play. **Students in Year 8 and 9 can participate in the Freo Dockers Cup. If a school is short of numbers, parent consent must be obtained for students in year 8/9 if they are to participate. Those schools having year 8/9 students participating must inform the opposing team prior to taking the field. Issues relating to liability rest squarely with the school. It is the schools' responsibility to ensure that this rule is adhered to and schools are liable for any consequences of not doing so.**

PRIVACY POLICY

Team photographs or other images may be produced during the football season by the governing body (WAFC) and may be utilized for the promotion and development of football by the governing body. Completion and lodgment of the Nomination Form indicates acceptance of his policy.





DIVISIONS

MOORE DIVISION

Region Coordinator – Sarah Christensen – 0423 332 836

Results to be EMAILED by the HOME TEAM before 10:30am on Wednesday morning.

Email: sarah.christensen@education.wa.edu.au

WHITE DIVISION – WEST PERTH, SUBIACO, CLAREMONT, PERTH & SWANS

Region Coordinator – TBC

Results to be EMAILED by the HOME TEAM before 10:30am on Wednesday morning.

Email: TBC

WHITE DIVISION – EAST PERTH

Region Coordinator – Gemma Francis

Results to be EMAILED by the HOME TEAM before 10:30am on Wednesday morning.

Email: Gemma.Francis@education.wa.edu.au

WHITE DIVISION – EAST FREMANTLE, SOUTH FREMANTLE & PEEL

Region Coordinator – Oliver Beath – 0411 018 939

Results to be EMAILED by the HOME TEAM before 10:30am on Wednesday morning.

Email: oliver.beath@allsaints.wa.edu.au

CHAMPION SCHOOLS

Year	Moore Division	White Division	Vanderweide Division
1996	Newman College		
1997	Kalamunda SHS		
1998	Kent St SHS		
1999	Kelmscott SHS		
2000	Newman College		
2001	Kelmscott SHS		
2002	St Brigid's College		
2003	Kelmscott SHS		
2004	All Saints College		
2005	Kelmscott SHS		
2006	Willetton SHS		
2007	Willetton SHS	Kelmscott SHS	
2008	John Septimus Roe ACS	Bunbury CGS	Bunbury CGS
2009	Willetton SHS	Winthrop Baptist College	Bunbury CGS
2010	John Septimus Roe ACS	Corpus Christi College	Katanning DHS
2011	John Septimus Roe ACS	Corpus Christi College	Katanning DHS
2012	Corpus Christi College	St Mary's AGS	Northam SHS
2013	St Mary's AGS	Kennedy Baptist College	Northam SHS
2014	St Mary's AGS	Kolbe Catholic College	Bunbury CGS
2015	Kolbe Catholic College	Emmanuel Catholic College	Bunbury CGS
2016	Kolbe Catholic College	Darling Range Sports College	Bunbury CGS
2017	John Septimus Roe ACS	Governor Stirling SHS	Pinjarra SHS
2018	Mater Dei College	Clontarf Aboriginal College	Pinjarra SHS
2019	Governor Stirling SHS	Iona Presentation College	Bunbury SHS
2020	Governor Stirling SHS	Comet Bay College	No Champion - COVID-19
2021	Governor Stirling SHS	SEDA College	No Champion - COVID-19
2022	SEDA College	Wanneroo Secondary College	Bunbury Catholic College

FREO DOCKERS SCHOOLGIRLS CUP (YR 8/9)

If your school is interested in participating in the Freo Dockers Schoolgirls Cup (Yr 8/9) contact your District Development Officer.

SCHOOLGIRLS COMMITTEE

NAME	POSITION	PHONE	EMAIL
Geoff Hayes	Chairman	0409 436 334	geoffrey.hayes@education.wa.edu.au
Regan Atkinson	WAFC	0437 587 161	ratkinson@wafc.com.au
Region Coordinators:			
TBC	White - West Perth & Subiaco	TBC	TBC
Oliver Beath	White - East Fremantle, South Fremantle & Peel	0411 018 939	oliver.beath@allsaints.wa.edu.au
TBC	White – Claremont, East Perth, Perth & Swans	TBC	TBC
Gemma Francis	White – East Perth	TBC	Gemma.Francis@education.wa.edu.au

THE PATRONS



CATHERINE VANDERWEIDE

Catherine VanderWeide was a director of the Great Northern Football League for eight years and served as president of the league, becoming the first female president of a football league in Australia. She served on the WA Country Football League executive for 11 years and was the first female to be awarded life membership of the WACFL. Cathy contributed to the West Australian Football Commission Female Football Committee and is a director of the Perth Football Club.

DEBORAH WHITE

Deborah White was instrumental in establishing a schoolgirls football competition in Western Australia. Debbie was appointed as WAWFL Junior Coordinator in 1995 and formed a committee to establish the inaugural Schoolgirls Cup. She continued as Junior Coordinator until 2001 and was also influential in obtaining sponsorship for the schoolgirls competition. Debbie played WAWFL between 1995-98 and was made a Life Member of the WAWFL in 1999.



ALISON MOORE

Alison Moore was the WAFC Female Talent Manager from 2012-17. During that time she was a member of various committees including WAFC Female Advisory Committee, Fremantle FC AFLW Advisory Committee and the West Coast Eagles AFLW Female Advisory Committee. Alison was a member of the Peel District Development Council in 2015-16 and was named as a Football Woman of the Year Finalist in 2016. She coordinated umpires for schoolboys and schoolgirls competitions between 2001-12. Alison umpired over 1,000 WAFL, WAAFL and Sunday Football League matches and was SFL Umpires Association Secretary from 1997-98 and President from 2001-03.





EAGLES SCHOOLBOYS CUP 2023





CONTENTS

Preface	25	Rules & Regulations	28
2023 Eagles Schoolboys Cup Timeline	26	W AFC Responsibilities	29
Competition Format	26	School Responsibilities	29
Fixtures	26	Awards	29
Eligibility	27	Previous Winners	30

PREFACE

Welcome to the Eagles Schoolboys Cup for 2023. Our core objective is to provide a professional competition with the capacity to deliver a safe, fun and fair environment for every stakeholder.

I would like to take this opportunity to acknowledge those who have taken on the roles of coaches, managers, officials and support staff and to thank you all sincerely for your efforts. Without your support the competition would not run.

I would also like to acknowledge the work of our Metropolitan and Regional development staff for their coordination and management of the competition.

Finally, I thank the West Coast Eagles for their commitment and support of secondary school football. Their partnership of this program ensures the Eagles Schoolboys Cup is an enjoyable experience for students, teachers, coaches and umpires.

I wish all the schools the best of luck in this year's competition.

REGAN ATKINSON
Schools Specialist

2023 EAGLES SCHOOLBOYS CUP TIMELINE

DAY	DATE	EVENT
Wednesday	February 1	Term 1 Commences
Friday	March 10	Nominations Close
Thursday	April 6	End of Term 1 / Regional Carnival Dates finalised & circulated
Monday	April 24	Term 2 Commences
Monday	May 1	Eagle Division fixtures commence this week (metro schools only)
Thursday	May 4	Waalitj Division fixtures commence
Thursday	TBC	Waalitj Division Semi Finals (Venues TBC)
Friday	June 30	End of Term 2
Monday	July 17	Term 3 Commences
Thursday	August 3	Eagle Division Elimination Final (Claremont v East Perth)
Thursday	August 10	Eagle Division Quarter Finals (Venues TBC)
Thursday	August 17	Eagle Division Semi Finals (Venues TBC)
TBC	TBC	Eagle Division Grand Final (Venue & Date TBC)
TBC	August 25-27	Waalitj Division Grand Final (Venue & Date TBC)

COMPETITION FORMAT

The Eagles Schoolboys Cup is a state-wide competition for boys in Year 8 & 9. The competition enters its 41st year in 2023 and is coordinated by the West Australian Football Commission.

COMPETITION FORMAT:

- Games are played over 2 x 20 minute halves on Thursdays after-school during Terms 2 & 3.
- Regional staff will coordinate a round robin competition or one-day carnival to determine a regional champion.

DIVISIONS:

WAALITJ DIVISIONS (A Grade): Strong football schools seeking quality competition with games played across districts.

EAGLE DIVISION (B Grade): Metropolitan schools play in a WAFL district-based competition to produce a champion school to represent each of the nine WAFL clubs. The nine champion schools then play in Quarter Finals, Semi Finals and a Grand Final to determine a winner of the Eagle Division.

UMPIRES:

The WAFC will arrange umpires for all Waalitj Division matches and for all Eagle Division finals. It is the responsibility of each school to provide one umpire for all Eagle Division pool matches.

Schools may use staff or qualified, accredited students as umpires. Any student umpires used must be at least the same age as the players, or older than the players. If a student umpire is unaccredited, then as a minimum, they should complete the \$15.00 online Umpire Introductory Course found at: <https://www.afl.com.au/umpires/courses>. It is recommended that any teachers umpiring their games complete this online course too. If a school would like to book a qualified district umpire, please contact Sport Staff One on 1300 776 776.

For all matches whereby the WAFC allocates umpires to, schools must provide at least 24 hours' notice to either their Division Coordinator or the WAFC Schools Specialist for any change of game details. This includes any form of fixture rescheduling or cancellation, including change of date, match time or venue. **Failure to provide at least 24 hours' notice will result in the school being charged the match fees of the umpires for that game, at the conclusion of the competition.**

FIXTURES

Matches will be played after school on Thursdays at 4pm or as close to this time as possible. **CHANGES TO GAME TIME / MATCH DAY SHOULD BE COORDINATED BETWEEN SCHOOLS ONLY AFTER NOTIFYING THE WAFC (WAALITJ DIVISION) OR WAFC DEVELOPMENT OFFICER (EAGLE DIVISION).**

GRAND FINAL

The dates and venues for the Waalitj Division Grand Final and Eagle Division Grand Final will be confirmed at a later date.

FIXTURES / RESULTS / LADDERS

Fixtures and ladders will be provided by the WAFC (Waalitj Division) or WAFC Development Officer (Eagle Division)

ELIGIBILITY

- All schools with students in Years 8 and 9 are eligible to participate
- Players must be full time students at the school to be eligible to play
- A player enrolled in Year 8 is deemed to be a Year 8
- A player enrolled in Year 9 is deemed to be a Year 9
- District High Schools may combine with other District High Schools if the combined Year 8 and 9 male population does not exceed 115 students.





RULES & REGULATIONS

GROUNDINGS

Matches are to be played at the home schools nominated oval. Where a school has nominated a junior football club oval or council oval as its home ground, it is that school's responsibility to ensure that the ground is ready for each home game, and liaise with the respective club or council accordingly.

Ovals for Youth age matches can range between 135m to 185m in length and 110m to 155m in width. **Goal and behind posts must be padded. Cricket pitches are to be covered. It is mandatory that the home team be responsible for goal post padding so that both goal and behind posts are covered. A game will not proceed where any posts and cricket pitches are uncovered (It is recommended the away team still brings goal post padding to games).**

Home teams are responsible for all ground markings – centre and goal squares and boundary line. Visiting schools need to inspect the oval prior to the commencement of the game to make sure it is suitable to proceed. Any concerns should be highlighted to the umpire prior to play commencing. The umpire will have the final say as to whether the game will proceed. **It is recommended that all schools use the WAFC endorsed JLT match day checklist. JLT match day checklists can be obtained from ratkinson@wafc.com.au.**

SAFETY

Spectators are to be kept from the boundary line and goal areas. Control of spectators is the responsibility of the competing schools. **Schools must have a first aid kit including ice or ice packs, along with a stretcher at the game.** Access to mobile phone communication is mandatory. If a school has a nurse, their involvement both in training school sports trainers and/or being at the game should be encouraged.

Umpire(s) are to check teams before each game for nails, earrings, necklaces, boots etc. Any item considered dangerous is to be removed.

PUBLIC LIABILITY

The WAFC has arranged Public Liability Insurance to a maximum of \$20,000,000 to cover its legal liabilities. The WAFC expects each school involved in Australian Football programs to maintain public liability insurance to sufficiently cover its legal liabilities. At its own discretion each school or individual may want to consider purchasing personal accident insurance to protect it against claims for non-Medicare medical expenses arising from this Australian Football program, or any other school program.

OVERSEER

The conduct of this competition relies heavily upon the attitude of the coach. Coaches are to report to the WAFC on any behaviour detrimental to the Codes of Conduct of the competition. Should a SSFAC member be in attendance at a fixture, that person will act as the game overseer. The Advisory Committee members have the right to remove any player in breach of the Code of Conduct from the field of play. They may also lodge a request to investigate any incident outside of the rules of the game.

CHANGE ROOMS

Change rooms are to be allocated by the home team if available. The cleaning up of these rooms and the ground is the responsibility of both teams.

TEAMS

Waalitj Division: 18 per team, minimum 12, maximum 7 reserves
Eagle Division: 15 per team, minimum 12, maximum 7 reserves

RULES

Rules are as per the Laws of Australian Football.

UNIFORMS

All teams are to be in uniform playing gear including:

- Numbered school jumpers
- Uniform football shorts/socks

STARTING TIMES AND DURATION OF MATCHES

All games start at 4:00pm. Games will be of two 20-minute halves, with no time on, with a five (5) minute interval at half time.

Every endeavour must be made to ensure games are played at the fixtured time and place. In the exceptional circumstances where a fixture cannot be played at the scheduled time, permission must be sought from your WAFC Football Development Officer before re-fixturing. If a team forfeits or if conditions are not met, a 60-point win will be awarded to the non-offending team, plus four premiership points.

Prior to the Game

The home team is to line up in the centre of the ground and wait for the away team to line up opposite. Players, coaches and umpires are to shake hands, both before and after the game.

At the Completion of the Game

The two coaches are to bring teams together to make any appropriate comments and to complete the match report. The Umpires are requested to participate. **THE COMPLETED MATCH REPORT IS TO BE EMAILED TO THE WAFC (WAALITJ DIVISION) OR YOUR DEVELOPMENT OFFICER (EAGLE DIVISION) BY THE HOME TEAM.**



AGE OF PLAYERS

Players must be full-time students at the school and in year 8 and 9 to play. **Issues relating to liability rest squarely with the school. It is the schools responsibility to ensure that this rule is adhered to and schools are liable for any consequences of not doing so.**

MATCH BALL (SIZE 4 AFL STANDARD)

The Home team will provide the match ball. The away team is to provide a suitable spare football. The ball will be a WAFC agreed sponsored brand.

DRAWN MATCHES

A draw will stand in home and away matches and two points will be awarded to each team, but not in finals. In all finals, five minutes each way extra time will be played to determine the winner. If still a draw at the end of five minutes each way, then the golden point rule will apply, whereby first team to score a goal or a behind wins the match. If poor light or circumstances prevent play from continuing, the match shall be re-scheduled.

A match will be deemed a final when it is an elimination match, i.e. is not part of the regular weekly fixtures. A WAFC staff member will make any decision on drawn matches and in their absence the responsibility will fall on the Field Umpire(s). Refusal by any team to play five minutes each way will be deemed a forfeit on their behalf and the game will be awarded to the opposing side.

PRIVACY POLICY

Team photographs or other images may be produced during the football season by the governing body (WAFC) and may be utilized for the promotion and development of football by the governing body. Completion and lodgement of the Nomination Form indicates acceptance of this policy.

WAFC RESPONSIBILITIES

- Arrange schools into appropriate divisions
- Set fixtures for that district/region
- Collate results after each round of fixtures
- Maintain a premiership table for each division
- Be a contact for all schools for any queries
- Publish weekly match results on the District's website
- Assist schools to organise a field umpire for each match
- Supply match football to each team
- Promote and actively encourage accreditation of **all** school coaches.

SCHOOL RESPONSIBILITIES

- Supply a field umpire for all HOME games (Eagle Division only).
- Supply timekeeper for HOME games
- Supply correctly attired boundary umpire and goal umpire
- Ensure all players are **suitably** attired in school playing apparel, with correct socks, shorts, boots and jumpers
- Supply Level One accredited coach (i.e. Level One)
- Home team to forward results to the WAFC (Waalitj Division) or WAFC Development Officer (Eagles Division) following all fixtures.

AWARDS

- The Champion school to be awarded the Eagles Schoolboys Cup and Championship medallions
- The runners-up to receive Grand Final medallions
- The best player in the Grand Final will receive the Ross Davis Medal.



PREVIOUS WINNERS

YEAR	WAALITJ DIVISION	EAGLE DIVISION
1983	Belmont SHS	
1984	Christ Church Grammar School	
1985	Aquinas College	
1986	Hamilton SHS	
1987	Trinity College	
1988	Guildford Grammar School	
1989	Narrogin SHS	
1990	Aquinas College	
1991	Northam Districts	
1992	Northam SHS	
1993	Guildford Grammar School	
1994	Corpus Christi College	
1995	South Avon	
1996	Corpus Christi College	
1997	Aquinas College	
1998	Carine SHS	
1999	Carine SHS	
2000	Aquinas College	
2001	Mazenod College	
2002	Trinity College	
2003	Trinity College	
2004	Sacred Heart College	
2005	Trinity College	
2006	Hale School	
2007	Trinity College	
2008	Trinity College	
2009	Trinity College	
2010	Trinity College	
2011	Trinity College	
2012	Darling Range Sports College	
2013	CBC Fremantle	
2014	Comet Bay College	
2015	Comet Bay College	
2016	Comet Bay College	
2017	Sacred Heart College	
2018	Governor Stirling SHS	Corpus Christi
2019	Governor Stirling SHS	Willetton SHS
2020	Governor Stirling SHS	No Winner- COVID-19
2021	Governor Stirling SHS	Wanneroo Secondary College
2022	Comet Bay College	Kennedy Baptist College



EAGLES INSIGHT

This program is designed to educate, inspire and motivate students, whilst supporting teachers to reach educational outcomes. Presentations are delivered by one of our qualified teachers, and generally run for 45min-1hour

Teachers can select from our four presentations, which have all been designed to align elements of elite practice to the Western Australian curriculum.

THE PROGRAM COMPRISES 4 INTERACTIVE PRESENTATIONS:

TRAINING FOR ELITE PERFORMANCE

GOAL SETTING AND RESILIENCE

LEADERSHIP

EMPLOYMENT IN THE SPORTING
INDUSTRY

Presented by West Coast Eagles staff at Mineral Resources Park, your school or within your community club.

FREE TO SCHOOLS AND COMMUNITY GROUPS

MORE INFO: westcoasteagles.com.au/community/eagle-insight

CONTACT: Janelle Marangon janellem@wce.com.au





GENERAL COMPETITIONS INFORMATION





CONTACTS - METRO

DISTRICT	NAME	EMAIL	MOBILE
CLAREMONT Development Officer	Alex Zulberti	azulberti@wafc.com.au	0404 714 790
EAST FREMANTLE Development Officer	Dylan De Paiva	ddepaiva@wafc.com.au	0450 542 811
EAST PERTH Development Officer	Zac Binning	zbinning@wafc.com.au	0455 340 900
PEEL Development Officer	Kayleigh Richardson	krichardson@wafc.com.au	0419 956 389
PERTH Development Officer	Zee Schorsch	zschorsch@wafc.com.au	0458 829 837
SOUTH FREMANTLE Development Officer	Olivia Hampton	ohampton@wafc.com.au	0413 555 858
SUBIACO Development Officer	Corey Dullard	cdullard@wafc.com.au	0439 528 777
SWANS Development Officer	Josh Embry	jembry@wafc.com.au	0423 011 600
WEST PERTH Development Officer	Mitch Gupanis	mgupanis@wafc.com.au	0423 855 877



CONTACTS - REGIONAL

GOLDFIELDS REGION Regional Specialist	Gemma Harrison	gharrison@wafc.com.au	0417 179 463
GREAT SOUTHERN REGION Regional Specialist	Jaxon Liddelw	jliddelw@wafc.com.au	0401 539 948
KIMBERLEY REGION Regional Specialist	Eamon Rice	erice@wafc.com.au	0439 660 746
MID WEST REGION Regional Specialist	Grady Tomelty	gtomelty@wafc.com.au	0439 674 378
MIDLANDS REGION Regional Specialist	Glen Collins	gcollins@wafc.com.au	0417 920 817
PILBARA REGION Regional Specialist	Vicki Agnew	vagnew@wafc.com.au	0455 661 633
SOUTH WEST REGION Regional Specialist	Nathan Douch	ndouch@wafc.com.au	0400 361 188
WHEATBELT REGION Regional Specialist	Paul Reid	preid@wafc.com.au	0419 859 576

Follow us on Twitter and Facebook



WA Football - @WAFootball
NAB AFL Auskick WA - @AFLAuskickWA
AFL 9's - @AFL9sWA
Female Football - @femalefootywa



WA Football - <http://www.facebook.com/wafootball>
NAB AFL Auskick - <http://www.facebook.com/NAB.AFL.Auskick>
AFL9's - <http://www.facebook.com/AFL9sWA>
Female Football - <http://www.facebook.com/femalefootywa>

Join the conversation #WAFooty

SPIRIT OF JUNIOR FOOTBALL IN WA

Every participant understands that junior football in Western Australia is delivered to the community with the spirit of the game in mind.

It is incumbent on every participant, irrespective of their place in the game, to ensure they will:

- **Not focus on winning at all cost** and understand that the role of junior football is to foster the development of junior players, volunteers, umpires, coaches and officials. Learning to win and lose is part of the developmental journey of a participant but must remain secondary to the primary focus of junior player development
- Maximise the enjoyment and development of junior footballers
- Provide our children with a game environment that is safe, fun and fair
- Ensure that the values which add to the spirit of our game, which include fairness, equality, respect and teamwork are encouraged and celebrated
- Uphold, promote and protect the rules, laws, codes, policies and spirit of the game
- Not accept poor behaviours around our game and deter practices that undermine our games environments (coaching, playing, volunteering, spectating and umpiring)
- Adhere to any directive issued by the games controlling bodies in the best interests of achieving the above.

GAME DAY PLAYER EVEN UP

Player “even up” must be applied for the entire game including finals. This section makes provisions for increased player welfare.

- Modified Rules Football - A match of modified football (Year 4– Year 7’s)
 - has no minimum number of players; and
 - the “even up” rule will apply when one or both teams have less than 15 players; and
 - all additional players will be offered to the lesser numbered team; and
 - each team shall have even numbers of players until teams comprise of 15 players
 - Junior Bylaw procedures apply in the case of Yellow and Red Cards
- Youth Rules Football - A match of Youth football (Year 8 – Year 12):
 - has minimum and maximum player numbers; and
 - the “even up” rule will apply when one or both teams have less than the maximum number of players; and
 - an even number of players from both teams are to start the match on the field; and must be on the field at all times except if a Red or Yellow Card is issued. Once the 15-minute penalty for the Red or Yellow Card has been served then an even number of players from both teams must be on the field.
 - If a player is injured and the team has no player to replace the injured player, the opposing team must “even up” immediately.
 - “Even-Up” Yellow Card Conditions:
 - An offender ordered off for a Yellow Card offence during an even-up situation cannot be replaced for 15 minutes of game time.
 - If a side can only field between 12 and 17 players the coach with the greater number of players must offer all additional players to the lesser numbered team to field up to the maximum of 18 players per team; and
 - Players must be rotated so that no single player plays more than one quarter per match for the opposition team.
 - Junior By Law procedures apply in the case of Yellow and Red cards
 - Any team that refuses the “even up” provisions will be deemed as losing the game and forfeiting any points and percentages earned during that game.

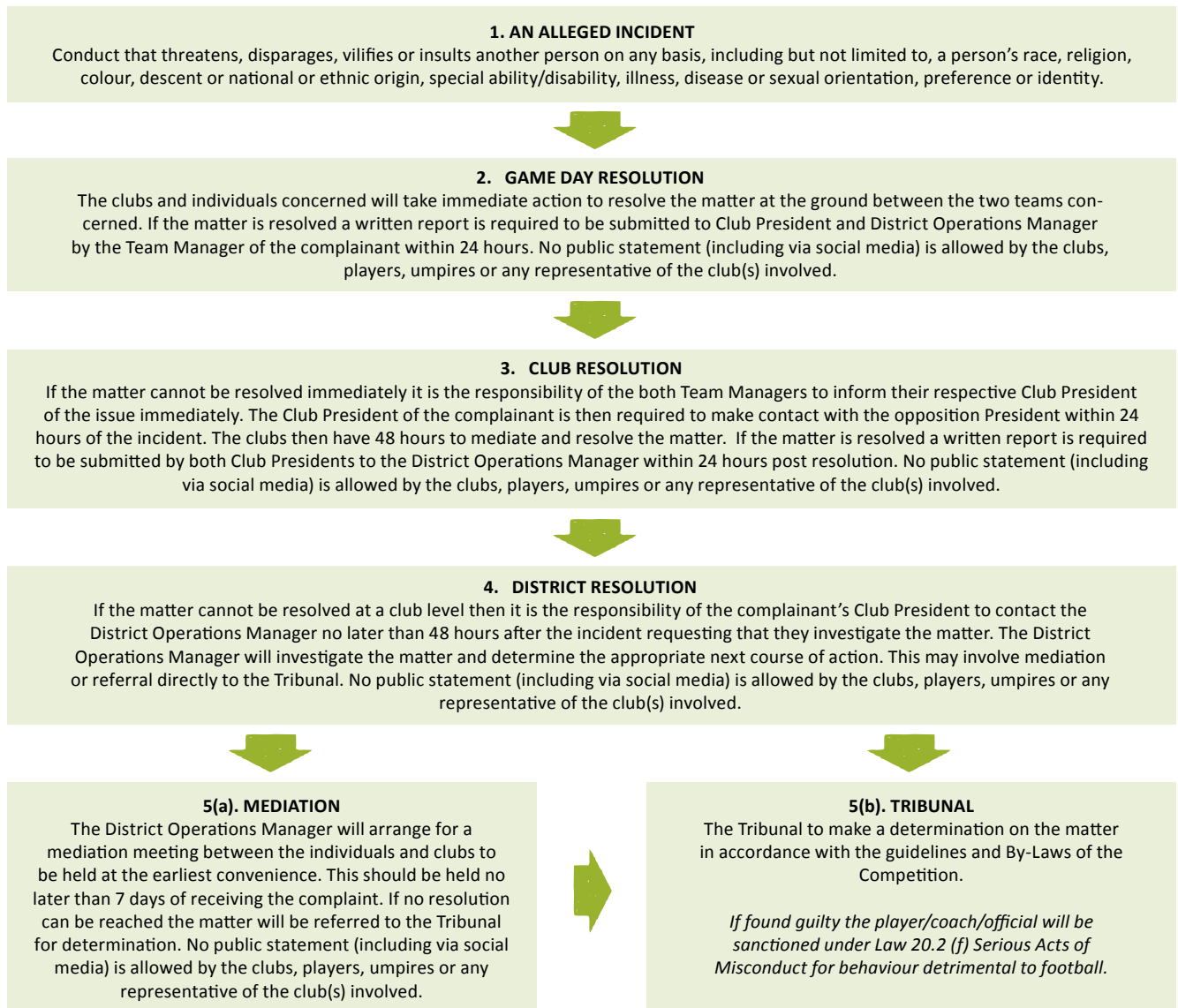


VILIFICATION POLICY

Vilification to any degree is totally unacceptable at any level of football (including Junior Football) and refers to any person including, but not limited to, players, officials, coaches, members, umpires, spectators, and parents that acts towards or speaks to any other person in a manner, or engages in any other conduct, which threatens, disparages, vilifies or insults another person on any basis, including but not limited to, a person's race, religion, colour, descent or national or ethnic origin, special ability/disability, illness, disease or sexual orientation, preference or identity.

All those involved in Junior Football have the right to be involved in an environment that is free from vilification and/or harassment. The Junior Competition should take an extremely firm stance on eliminating this type of behaviour from the game.

The vilification resolution process is:



Any adult that is found to have vilified a person at Junior Football, or has been found to have encouraged others to vilify other people, should receive significant penalties from the Tribunal.

There is absolutely no place for vilification of any nature in Football!

SAFETY

USE OF STRETCHER / INJURED PLAYERS

In all games, including finals, any player who in the opinion of the injured player's team officials requires the assistance of a stretcher shall be attended by a suitably trained and certified medical officer in the practice of use of a stretcher prior to removal of that player, UNLESS the player is capable and conscious enough to place themselves on the stretcher without assistance.

If the stretcher has been called for by an authorised person, then the player will be removed from the playing field via the most direct route for play to recommence. The injured player may be replaced through the interchange.

If a player is removed from the field on a stretcher then that player will not take any further part in the game whatsoever.

If, in the opinion of a field umpire or team medical officer, a player cannot be moved from the field of play due to the severity of an injury, then play may be abandoned for the game at the discretion of a meeting between the two coaches and the field umpire and or any **SSFAC member** if present.

The **SSFAC** shall be advised of any such abandonment for the purpose of either rescheduling the fixture or determining a result according to the progress score and point of the game at which the game was abandoned.

MOUTH GUARDS

It is strongly recommended that all players wear a mouth guard when either training for or playing football.

BLEEDING & BLOOD BORN INFECTIONS

No school shall allow any player to participate in any match or continue to participate in any match for so long as such player:

- (a) is bleeding;
- (b) has blood on any part of his/her person or uniform.

Only the field umpires can direct a player to leave the playing field, thereby ensuring the team is not disadvantaged by playing one team member short for any period of time. A player, who refuses to promptly obey a direction of an umpire given in accordance with this policy, shall be reported by the umpire for misconduct in that he/she refused to leave the field.

Upon being directed to leave the playing arena, a player shall not return to take any further part in any match until and unless:

- (a) the cause of any such bleeding has been abated;
- (b) the injury is securely covered to the extent that no blood is visible;
- (c) any bloodstained article of uniform has been removed and replaced;
- (d) any blood on any part of a player's person has been thoroughly cleansed and removed.



CONCUSSION

Concussion occurs when, after a blow to the head, there is brain injury with some immediate disturbance of brain function. Any player showing the signs or symptoms of concussion should be removed from the field immediately and referred to a medical practitioner. A player who has suffered concussion with or without loss of consciousness should not participate in any match or training session until he/she is fully recovered and has been cleared by a thorough medical examination.


All players sustaining a concussion require a medical clearance before the resumption of training or playing.

Key Considerations


- Any player who has suffered a concussion or is suspected of having a concussion must be medically assessed as soon as possible after the injury and must not be allowed to return to play in the same game or train in the same practice session. If in doubt, sit them out!
- There should be a trained first aider at every game and the principles of first aid should be used when dealing with any player who is unconscious or injured.
- A concussed player must not be allowed to return to school or return to training or playing before having a formal medical clearance.
- The child is not to return to play or sport until they have successfully returned to school/learning, without worsening of symptoms. Symptom assessment in the child often requires the addition of parent and/or teacher input.
- It is reasonable for a child to miss a day or two of school after concussion, but extended absence is uncommon.

For the updated Concussion Management Document please visit: www.wafootball.com.au

Pocket CONCUSSION RECOGNITION TOOL



To help identify concussion in children, youth and adults



RECOGNIZE & REMOVE

Concussion should be suspected if **one or more** of the following visible clues, signs, symptoms or errors in memory questions are present.

1. Visible clues of suspected concussion

Any one or more of the following visual clues can indicate a possible concussion:

- Loss of consciousness or responsiveness
- Lying motionless on ground / Slow to get up
- Unsteady on feet / Balance problems or falling over / Incoordination
- Grabbing / Clutching of head
- Dazed, blank or vacant look
- Confused / Not aware of plays or events

2. Signs and symptoms of suspected concussion

Presence of any one or more of the following signs & symptoms may suggest a concussion:

• Loss of consciousness	• Headache	• Seizure or convulsion
• Dizziness	• Balance problems	• Confusion
• Nausea or vomiting	• Feeling slowed down	• Drowsiness
• "Pressure in head"	• More emotional	• Blurred vision
• Irritability	• Sensitivity to light	• Sadness
• Amnesia	• Fatigue or low energy	• Feeling like "in a fog"
• Nervous or anxious	• Neck Pain	• "Don't feel right"
• Sensitivity to noise	• Difficulty remembering	• Difficulty concentrating

© 2013 Concussion in sport group

3. Memory function

Failure to answer any of these questions correctly may suggest a concussion.

"What venue are we at today?"
"Which half is it now?"
"Who scored last in this game?"
"What team did you play last week / game?"
"Did your team win the last game?"

Any athlete with a suspected concussion should be **IMMEDIATELY REMOVED FROM PLAY**, and should not be returned to activity until they are assessed medically. Athletes with a suspected concussion should not be left alone and should not drive a motor vehicle.

It is recommended that, in all cases of suspected concussion, the player is referred to a medical professional for diagnosis and guidance as well as return to play decisions, even if the symptoms resolve.

RED FLAGS

If ANY of the following are reported then the player should be safely and immediately removed from the field. If no qualified medical professional is available, consider transporting by ambulance for urgent medical assessment:

▶ Athlete complains of neck pain	▶ Deteriorating conscious state
▶ Increasing confusion or irritability	▶ Severe or increasing headache
▶ Repeated vomiting	▶ Unusual behaviour change
▶ Seizure or convulsion	▶ Double vision
▶ Weakness or tingling / burning in arms or legs	

Remember:

- In all cases, the basic principles of first aid (danger, response, airway, breathing, circulation) should be followed.
- Do not attempt to move the player (other than required for airway support) unless trained to do so.
- Do not remove helmet (if present) unless trained to do so.

from McCrory et. al, Consensus Statement on Concussion in Sport. Br J Sports Med 47 (5), 2013

© 2013 Concussion in sport group

UMPIRES HANDSHAKE POLICY

Coaches are expected to shake the hand of the match day umpires both pre and post game.

This mark of respect will reinforce our commitment to influencing positive game day environments, and stands as an excellent example of behaviour from the Coach to Players and Spectators. Coaches should also shake each other's hand both pre and post match.

CONCUSSION MANAGEMENT IN AUSTRALIAN FOOTBALL

Concussion refers to a disturbance in brain function that results from trauma to the brain. The changes are temporary and the majority of players recover completely if managed correctly.

Key Components of Concussion Management

1. **Recognise the injury**
2. **Remove the player from the game**
3. **Refer the player to a medical doctor for assessment**
4. **Ensure the player has received medical clearance for a graduated return to training**

There should be a trained first aider at every game and the principles of first aid, including management of the cervical spine, should be used when dealing with any player who is unconscious or injured.

Recognise Concussion

1. Visible clues of suspected concussion

Any one or more of the following visual clues can indicate a possible concussion:

• Loss of consciousness or responsiveness	• Lying motionless on ground / Slow to get up
• Dazed, blank or vacant look	• Grabbing / Clutching of head
• Unsteady on feet / Balance problems or falling over / Incoordination	• Confused / Not aware of plays or events

2. Signs and symptoms of suspected concussion

Presence of any one or more of the following signs & symptoms may suggest a concussion:

• Loss of consciousness	• Headache	• Seizure or convulsion	• Nervous or anxious
• Dizziness	• Balance problems	• Confusion	• Neck Pain
• Nausea or vomiting	• Feeling slowed down	• Drowsiness	• "Don't feel right"
• "Pressure in head"	• More emotional	• Blurred vision	• Sensitivity to noise
• Irritability	• Sensitivity to light	• Sadness	• Difficulty remembering
• Amnesia	• Fatigue or low energy	• Feeling like "in a fog"	• Difficulty concentrating

Manage Concussion

- ✓ Any player who has suffered a concussion or is suspected of having a concussion must be **IMMEDIATELY REMOVED FROM PLAY** and medically assessed as soon as possible after the injury. **They must not be allowed to return to play in the same game or practice session.**
- ✓ A concussed player must not return to school or return to training or playing **before having a formal medical clearance.**
- ✓ A concussed child (player aged 5-17) is not to return to play or sport until they have successfully returned to school/learning, without worsening of symptoms. Symptom assessment in the child often requires the addition of parent and/or teacher input.
- ✓ The concussion rehabilitation program should be supervised by the treating medical practitioner and should follow a graded, symptom limited progression.

In the best practice management of concussion in football, the critical element remains the welfare of the player, both in the short and long term.

"IF IN DOUBT, SIT THEM OUT"



OFFICIALS

THE COACH

The coach, will be a nominated teacher at the school. If a teacher cannot be found, then the school should arrange for a suitable person from the local community to be interviewed by the school Principal and/or HOLA Health and Physical Education for the coaching position. It is a condition of this competition that a teacher at the school must be associated with the team and in attendance for the duration of the game. The coach's role is paramount. He/she is responsible primarily for the on and off field actions of their players and therefore must set standards of discipline.

FIELD UMPIRES

WA Football supports a **ZERO TOLERANCE** stance against any form of umpiring or official abuse. Any breaches of these codes will result in penalties and sanctions directed at the person responsible, the team and possibly the school.

The Umpires Coordinator shall oversee a panel of umpires from which they will appoint a trained umpire or umpires to officiate at each finals match. Further, the WAFC encourages qualified students or staff to submit their names to be included on the umpiring panel. Such persons will be paid for their services. Umpires are required to bring Red/Yellow Cards to all games.

GOAL UMPIRES

Each team must supply one mature goal umpire. He/she must have a white coat, goal flags and a scorecard. Goal umpires must check scores at half time and after the match. Field umpires are to supervise this.

BOUNDARY UMPIRES

Each team shall supply a boundary umpire who shall be correctly attired and of sufficient knowledge and maturity to correctly throw the ball into play and carry out all other responsibilities of the position.

FINALS UMPIRES

These umpires will be organised by the WAFC.

Should a field umpire not be available to officiate at any match the opposing coaches or team officials may agree to appoint any person to act in that capacity. In such case the appointed umpire shall have the same responsibilities and authority as any umpire appointed by the Umpires Coordinator.

TIMEKEEPER

The home team is to supply a timekeeper who will have a siren or a hooter. A stopwatch is to be used at all times to ensure accurate times are maintained. The WAFC will supply a timekeeper for all curtain raiser matches unless advised otherwise.

MATCH REPORTS

These are the responsibility of the **HOME** team and are to be completed on the day and signed by the coaches and umpires. Offending players are to be noted in the report. **The report is to be forwarded to the Regional Coordinator by 10.30am the day after the game. This is essential to compile regular premiership tables.**

UMPIRES HANDSHAKE POLICY

Coaches are expected to shake the hand of the match day umpires both pre and post game.

This mark of respect will reinforce our commitment to influencing positive game day environments, and stands as an excellent example of behaviour from the coach to players and spectators. Coaches should also shake each other's hand both pre and post match.



CODES OF CONDUCT

The major objective of Junior Football is to provide an opportunity for all children to play Australian Football in a safe environment designed to maximise the acquisition of skill and provide enjoyment (Fun). The following Codes of Conduct, if followed by all people involved in our junior game, should ensure the fulfilment of this important objective. The West Australian Football Commission Football Affairs Committee strongly advises that all persons involved be issued with copies of the appropriate Code of Conduct. WA Football encourages acts of sportsmanship (hand shaking etc) between players, coaches, administrators, umpires etc.

RED FLAG – Game Environment Filter

Protecting and enhancing our Game Environment will always be a strategic focus for football. In 2019, we will see the ongoing enhancement of a Game Environment Filter, **RED FLAG**. This will assist in monitoring all football segments, and the standard of the environment and the spirit in which they are played. To this end an online filter has been developed whereby key football stakeholders are able to identify and bring to the attention of governing bodies any undesirable behaviours and actions that may breach any of the Codes of Conduct or By-Law 1 “The Spirit of Junior Football”.

The Red Flag notification is completed online with confidentiality assured within the process. Issues that are flagged that require official intervention will be overseen by the WAFC Coaching Manager in consultation with the specific League Officials and WAFC District/Regional Staff. The Red Flag filter will apply to everyone involved in Football from coaches, spectators, and players to volunteers and Club Administrators.

ADMINISTRATOR’S AND VOLUNTEERS CODE OF CONDUCT

- Understand and adhere to **BYLAW #1 ‘The Spirit of Junior Football’**.
- Ensure that equal opportunities for participation in sports are made available to all children, regardless of ability, size, shape, gender, age, disability or ethnic origin.
- Actively promote Positive Game Day Environments with Junior Football and the importance of E-Point structures to the game.
- Ensure that rules, equipment, length of games and training schedules take into consideration the age, ability and maturity level of participating children.
- Ensure that adequate supervision is provided by qualified and competent coaches and officials capable of developing appropriate sports behaviour and skill technique.
- Remember that children participate for enjoyment and play down the importance of rewards.
- Provide clinics aimed at improving the standards of coaching and officiating, with an emphasis on appropriate behaviour and skill technique.
- Ensure that parents, coaches, sponsors, trainers and participants understand their responsibilities regarding fair play.
- Modify rules and regulations to match the skill level of children and their needs.
- Condemn unsporting behaviour and promote respect for all opponents.
- Publicly encourage rule changes which will reinforce the principles of participation for fun and enjoyment.
- Ensure that your behaviour is consistent with the principles of good sporting behaviour.
- Make a personal commitment to keep yourself informed of sound officiating principles and the principles of growth and development of children.
- Ensure promotion, well-being and safety of umpires and encourage good sportsmanship before, during and after matches.
- Ensure positive player/umpire relationships are continually developed.

COACHES CODE OF CONDUCT

It is imperative that coaches understand and adhere to **BYLAW #1 ‘The Spirit of Junior Football’**.

As a coach, I understand that as an integral component of my accreditation, I must maintain a standard of behaviour and conduct in the best interests of the game and the players/staff in my care.

In representing myself in an honest manner, and without bringing the coaching profession or the Game into disrepute, I will endeavour to uphold the following to the best of my ability:

1. I will respect the rights, dignity and worth of all individuals within the context of my involvement in Australian Football, including refraining from any discriminatory practices on the basis of race, religion, ethnic background, or special ability/disability.
2. I will abide by and teach the AFL Laws of the Game and the Rules of my Club, District and League/Association.
3. I will be reasonable in the demands I make on the time commitments of the players in my care, having due consideration for their health and well-being.
4. I will be supportive at all times and I will refrain from any form of personal abuse or unnecessary physical contact with the players in my care.
5. I will have due consideration for varying maturity and ability levels of my players when designing practice schedule, practice activities and involvement in competition.
6. I will avoid overplaying the talented players aiming to maximise participation and enjoyment for all players regardless of ability. Where I am responsible for players in the 5-18 year old age group, I will strive to ensure that all players gain equal playing time.
7. I will stress and monitor safety always.
8. In recognising the significance of injury and sickness, I will seek and follow the physician’s advice concerning the return of injured or ill players to training.

9. I will endeavour to keep informed regarding sound principles of coaching and skill development, and of factors relating to the welfare of my players.
10. I will at all times display and teach appropriate sporting behaviour, ensuring that players understand and practise fair play.
11. I will display and foster respect for umpires, opponents, coaches, administrators, other officials, parents and spectators.
12. I will ensure that players are involved in a positive environment where skill learning and development are priorities and are not overshadowed by a desire to win.
13. I reject the use of performance enhancing substances in sport and will abide by the guidelines set forth in the AFL Drug Policy.

Note: This "Coaches Code of Conduct" is to be signed and conformed to as part of the accreditation requirements of the AFL. Coaches should be aware that, in addition to this Code, they may be obliged to sign a further Code of Conduct/Ethnics with their Club and/or League or State Sports Association (WAFC).

PARENT'S & SPECTATOR'S CODE OF CONDUCT

- Understand and adhere to **BYLAW #1 'The Spirit of Junior Football'**.
- Encourage children to participate, if they are interested.
- Encourage children to always participate according to the rules.
- Never ridicule or yell at a child for making a mistake or losing a game.
- Remember that children learn best from example. Applaud good plays by all teams.
- If you disagree with an official, raise the issue through the appropriate channels rather than questioning the official's judgment and honesty in public.
- Support all efforts to remove verbal and physical abuse from sporting activities.
- Recognize the value and importance of volunteer coaches, managers and helpers
- Remember that children play organized sports for fun. They are not playing for the entertainment of spectators only, nor are they miniature professionals.
- Condemn the use of violence in any form, be it by spectators, coaches, officials or players.
- Encourage players to follow the rules and the umpire's decisions.
- Demonstrate appropriate social behaviour by not using foul language, harassing players, coaches, umpires or volunteers.

PLAYER'S CODE OF CONDUCT

- Understand and adhere to **BYLAW #1 'The Spirit of Junior Football'**.
- Play by the rules.
- Never argue with an umpire or an official. If you disagree, discuss the matter with your coach or teacher after the game.
- Control your temper. Verbal abuse of officials or other players, or provoking an opponent is not acceptable.
- Work equally hard for yourself and for your team. Your team's performance will benefit so will you
- Be a good sport. Applaud all good plays whether they are by your team, opponent or the other team.
- Treat all players as you would like to be treated. Do not interfere with, bully or take unfair advantage of another player.
- Cooperate with your coach, team mates and opponents. Without them there would no competition.
- Play for the "fun of it" and not just to please parents and coaches.
- Avoid using derogatory language.
- Be prepared to take responsibility for your actions.

RUNNER'S/WATER STEWARDS CODE OF CONDUCT

- Understand and adhere to **BYLAW #1 'The Spirit of Junior Football'**.
- The runner SHOULD BE AN ADULT.
- The runner must be clearly identified.
- The runner's name must be entered in both team books.
- No abusive language or swearing.
- Support the decision of the umpires at all times and never question decisions.

UMPIRE'S CODE OF CONDUCT

- Understand and adhere to **BYLAW #1 'The Spirit of Junior Football'**.
- Modify rules and regulations to match the skill level of children and their needs.
- Compliment all participants on their efforts.
- Be consistent, objective and courteous in calling all infractions.
- Condemn unsporting behaviour and promote respect for all opponents.
- Ensure that the "spirit of the game" for children is not lost by using common sense and not over emphasizing errors.
- Publicly encourage rule changes which will reinforce the principles of participation for fun and enjoyment.
- Ensure that your behaviour is consistent with the principles of good sporting behaviour. Actions speak louder than words.
- Make a personal commitment to keep yourself informed of sound officiating principles and the principles of growth and development of children.
- Avoid use of derogatory language based on gender.

NATIONAL COACHING STRATEGY: A NEW APPROACH

Prior to the commencement of the 2018 football season, following extensive research, analysis and consultation with stakeholders across the industry, a new approach to accreditation and support of the coaching community will be introduced.

The primary objectives of the new approach are to:

- Reduce the barriers to entry of becoming an accredited coach
- Build a deeper understanding of the coaching community
- Use this understanding to increase the accessibility of targeted quality resources for coaches
- Provide ongoing education and development opportunities for all coaches
- Ensure all coaches understand their responsibilities and obligations

The National Coaching Strategy will commence its roll out in early March, key features of this new approach include:

1.0 IMPROVED ACCESSIBILITY TO ENTRY LEVEL ACCREDITATION

As has been the case for many years, coaching accreditation will continue to be mandatory for all those wishing to fulfil a coaching role on match day. However, entry level accreditation is being changed to improve its accessibility.

The current 4-year accreditation scheme will be replaced a **New Coach AFL Membership Model** featuring annual membership, administered via the **Coach.AFL online platform**. An annual membership fee will apply.

Foundation Level Accreditation (previously Level 1) will be included as a benefit of Coach.AFL membership and will be achieved through the completion of an online Foundation Course specific to the age of the team being coached whether it be senior, youth or junior (including Auskick). **There will be NO requirement to attend a coaching workshop in person prior to achieve this Foundation Level Accreditation and commencing coaching in 2018.** This online Foundation Level Accreditation will take between 60-90 minutes to complete.

2.0 NEW COACH.AFL MEMBERSHIP MODEL

Coach.AFL will be based on annual membership model supporting ongoing coach education. Coaches will attain points for annual re-accreditation via a number of means including but not limited to coaching experience, online education on Coach.AFL and attendance at seminars, workshops and conferences run by WAFC District or Regional Staff. Please contact your local District or Regional staff member after March 1 for further details.

Coaches accrediting for the first time:

- Complete contact details and coaching profile
- Acceptance and agreement to the Coaches' Code of Conduct
- Complete online Foundation Course specific to the age of the playing group (senior, youth or junior)
- Payment of annual membership fee

Coaches with current accreditation:

- Complete contact details and coaching profile
- Acceptance and agreement to the Coaches' Code of Conduct
- Complete prescribed online education module
- Note: Payment of annual membership fee will be waived for the remaining years of their current accreditation period

Coaches with accreditation expiring in 2017:

- Complete contact details and coaching profile
- Acceptance and agreement to the Coaches' Code of Conduct
- Complete prescribed online education module
- Payment of annual membership fee

3.0 COACH.AFL ONLINE PLATFORM

The Coach.AFL online platform is designed as a central resource centre for coaches. It will serve as a national membership database, enable coaches to manage their **Coach.AFL Membership** (including accreditation, ongoing education and compliance) and provide access to a central **Online Repository** housing quality coaching resources and educational support.

Coach.AFL members will have exclusive access to high quality and consistent information that will:

- Explain the development pathway for coaches of all age groups
- Provide online educational and development opportunities
- Provide accessible resources to guide coaches on their journey
- Ensure aspiring coaches understand the significance of the role they play and how to positively influence the personal development of players of all ages and ability levels
- Ensures coaches understand their obligations

Coach.AFL is scheduled for launch in early March 2018 but will continue to progressively build and be refined over the years to come.

4.0 FURTHER INFORMATION

For any further enquiries please contact your local District or Regional WAFC staff member.

AUSTRALIAN FOOTBALL COACHES ASSOCIATION (AFCA)

Coordinated by WAFC Community Team, the AFCA Coach Education process is a series of seminars which utilize a range of presenters to deliver interactive and informative coach education sessions. These sessions are again communicated to district coaches via their Development Officers, and through the Coaches Edge newsletter.

AFCA hosts an Excellence in Coaching Awards Event to present each football coach who have shown excellence and measurable achievements through quality coaching techniques over the past season(s).

From these nominations the “JJ Leonard Medal” for Coach of the Year, “Ken Armstrong Community Coach” of the Year and the “Greg Brehaut Memorial Scholarship” will be selected. These awards are presented in recognition of three stalwarts of our national game in Western Australia.

This year “Coach of the Year” awards will also be awarded in the following categories;

- Auskick,
- Modified Rules,
- Youth,
- Senior Community
- Female.

All nominations/applications must be submitted through the appropriate nomination form.

COACH EDUCATION IN YOUR DISTRICT

Whilst the accreditation aspect of being a coach in our great game is an integral component of coach education, there are other ongoing opportunities for aspiring coaches to develop their understanding of our game.

By making contact with their respective District Development staff, coaches will be able to tap into a range of coach seminars, coach mentoring and other coach development opportunities that will enhance their coaching knowledge.

REPORTS

The following personnel have the power to report any player or official for any breach of the laws of the game, codes of conduct, member protection policies or of the rules or By-laws of the **Secondary Schools Football Advisory Committee**.

- (a) Field Umpire
- (b) Umpires’ Coach whilst in an observing capacity
- (c) Boundary umpires if officially appointed by the **Secondary Schools Football Advisory Committee**
- (d) Goal umpires if officially appointed by the **Secondary Schools Football Advisory Committee**
- (e) Stewards if officially appointed by the **Secondary Schools Football Advisory Committee**
- (f) Any member of the **Secondary Schools Football Advisory Committee**
- (g) Any member of WAFC staff

Any player or official, who is to be reported, must be advised of such report prior to the commencement of the next quarter of the game, unless the offence occurs in the final quarter in which case advice to the Team Manager when passing on the official report sheet will suffice.



REPORTED PLAYERS

Any player or official suspended by either a tribunal or prescribed penalty will not be permitted to play, coach or participate in any capacity, in any affiliated district competition including schools, senior metropolitan community football or regional football, for the duration of the penalty. The reverse also applies.

THE “YELLOW” CARDS

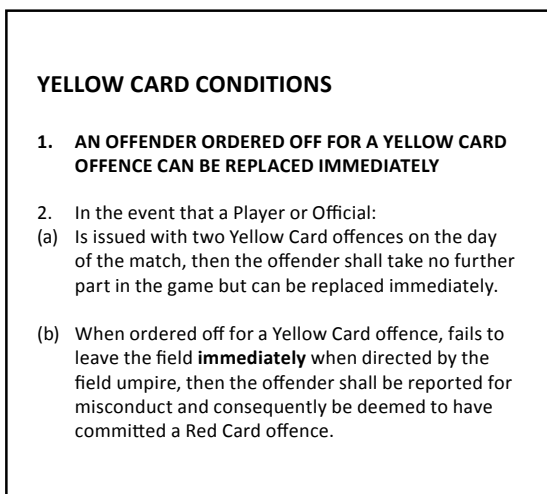


FRONT OF YELLOW CARD

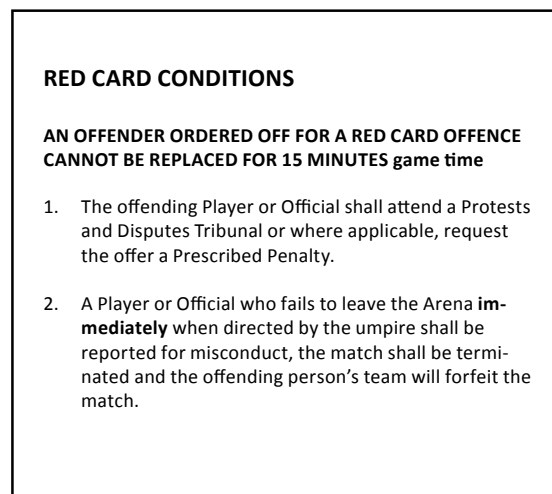
THE “RED” CARDS



FRONT OF RED CARD



BACK OF YELLOW CARD



BACK OF RED CARD

Step One: The Report

Should any player be reported, the umpire will provide a thorough description of the offence on the Match Report. In order for the matter to be dealt with quickly, he/she must take the following steps **immediately following the game**:

1. Notify the coach of the offending player that the report has been made against.
2. Outline the offence the player has been charged with.
3. Notify the opposing coach if a player on his team was involved in the incident and may be required to attend a tribunal hearing.
4. Notify the Umpire's Coordinator of the report that evening.

From here, it is the coach's responsibility to:

- a. Outline the player's options with regard to a penalty:
 - Accept a prescribed penalty
 - Proceed with a tribunal hearing
- b. Contact the Regional Coordinator prior to 12pm the following day to notify them as to the player's decided option.
- c. If an opposing player has been offended against, his coach must too, contact the Regional Coordinator by 12pm the following day to find out if the player is required at a tribunal hearing.
- d. Notify the Umpire's Coordinator that evening of the report.

Step Two: Player's Decision

Once being notified that a report has been lodged, the player has until the following morning to notify his coach of the decision he has made regarding the penalty. His options are to:

- a. Accept the umpire's decision and take a prescribed penalty, hence eliminating the need for an actual hearing.
- b. Dispute the umpire's decision and choose to have the case heard by the School Competitions Tribunal at a time arranged by the Schools Competitions Manager.
In either case, the player must have confirmation from a parent/guardian and/or School Principal/HOLA that the decided course of action meets with their approval.

From this point on, the following shall occur:

DECISION: PRESCRIBED PENALTY

If the player chooses this course of action, the following must occur:

1. The player notifies the coach of his decision prior to school the following day. A standard "Confirmation of Report Form" must be completed by the player and a parent/guardian and/or School Principal/HOLA and returned to school the following day.
2. The coach contacts the Regional Coordinator and informs him of the player's decision. Prior to 9.30am a copy of the Confirmation of Report Form is faxed to the Regional Coordinator.
3. The Regional Coordinator contacts the Schools Competitions Manager and informs him of the decision. The Schools Competitions Manager will notify any relevant community/school sporting bodies affected by the suspension.

DECISION: DISPUTE THE CHARGE

If the player chooses this course of action, the following must occur:

1. The player must notify his coach of his decision prior to school the following day.
2. The coach must notify the Regional Coordinator (prior to 9.30am), that a tribunal hearing needs to be convened.
3. The Regional Coordinator then notifies the Schools Competitions Manager to arrange tribunal proceedings.

NOTE: The coach is responsible for arranging advocacy for a player should that player choose to dispute the charge.

ARRANGING THE HEARING

To ensure that the case in question is resolved as quickly as possible, the following procedure should be observed by the Manager School & Junior Competitions.

1. Arrange the case to be heard at the offices of the WAFC. The case should be heard as soon as possible following the date of the charge.
2. Arrange for a panel of three delegates to attend the hearing. These should consist of:
Chairman, Secondary School Football Advisory Committee
Community Football Council or WAFC representative
School Sport WA representative
If one of these parties is unavailable then a representative of the SSFAC shall be the substitute.
3. Contact the teacher/coach of the player charged and informs them of the time and location of the hearing.
4. Contact the teacher/coach of the player infringed against (if required), and informs them of the time/location of the hearing.
5. Contact the Umpire Coordinator with the above-mentioned details and request he arrange for the charging umpire to attend the hearing.

MISCONDUCT

- The Coach is the key to a team's behaviour both on and off the field. All coaches are required to attend a coaches meeting with the Regional Coordinator.
- Coaches who deliberately break the 'Codes of Behaviour' will be asked to step down.
- The send off rule will be applied in all games.
- Red and Yellow Cards will be used as in line with WAFC standard Order Off Rule. That is:
- Any player or official receiving a Red Card is automatically reported and shall take no further part in any match conducted on the day the offender was reported and is required to attend a Protests and Disputes Tribunal or where applicable, request the offer of the prescribed penalty.
- If a team's conduct is deemed by the umpires as not upholding the Codes of Conduct for the competition, behaviour points may be withheld.
- An independent Tribunal consisting of representatives as listed in point 2 above will hear any major serious charges.

ANY PLAYER OR OFFICIAL SUSPENDED BY EITHER A TRIBUNAL OR PRESCRIBED PENALTY WILL NOT BE PERMITTED TO PLAY, COACH OR PARTICIPATE IN ANY CAPACITY, IN ANY AFFILIATED DISTRICT COMPETITION INCLUDING SCHOOLS, SENIOR METROPOLITAN, JUNIOR COMMUNITY FOOTBALL OR REGIONAL FOOTBALL, FOR THE DURATION OF THE PENALTY.

STANDARD RANGE OF PENALTIES FOR REPORTABLE OFFENCES:

* The WAFC Manager Participation will adjudicate on any anomalies, inconsistencies or interpretive issues that arise in relation to the range of penalties. Any request for rulings will be initiated by the District Competition Director in writing to the WAFC Manager Participation.

The *Standard Range of Penalties* shall apply to any Player or Official found guilty of a Specific Reportable Offence listed in Law 19.2.2 of the Laws of Australian Football or as described in the Rules and Regulations of the Controlling Body.

Where an Offender commits two (2) or more offences within the current 2 year period, then the "Second Offence" Range of Penalties shall be used to determine the penalty.

The "Second Offence" Range of Penalties have been set at double the "First Offence" Range of Penalties to clearly signify that repeat offenders will not be tolerated.

In determining an Offender's penalty, the Tribunal shall use the *Standard Range of Penalties* and may increase the penalty after taking into consideration any injury sustained by a victim and/or any previous convictions of the offender prior to the last 2 years of the Tribunal sitting. The use of Suspended Sentences may be used as an additional penalty to the *Standard Range of Penalties*.

The Tribunal shall **not reduce** the minimum *Standard Range Penalties*, unless mitigating circumstances are established at the hearing. If mitigating circumstances are established, The Tribunal Chairman shall state and record the circumstances on the *Standard Disciplinary Record of Tribunal Proceedings* form.



THE STANDARD RANGE OF PENALTIES

(RELATING TO SPECIFIC REPORTABLE OFFENCES UNDER LAW 19.2.2)

(a) Making contact with an umpire;

1st Offence: Range: 4 weeks to 2 years
negligent 4-10 weeks, reckless 10 weeks- 1 year, intentional 1 -2 years

2nd Offence: Range 8 weeks to 4 years
negligent 8-20 weeks, reckless 20 weeks- 2 years, intentional 2 -4 years

Striking an Umpire;

1st Offence: Range: 2 years to Life
Negligent 2-4 years, reckless 4-10 years, intentional 10 years – Life

2nd Offence: Range: 4 years to Life
Negligent 4-8 years, reckless 8-20 years, intentional 20 years – Life

(b) Attempting to make contact with an Umpire;

1st Offence: Range: 2 weeks to 1 year
Negligent 2-5 weeks, reckless 5-10 weeks, intentional 10 weeks - 1 year.

2nd Offence: Range: 4 weeks to 2 years
Negligent 4-10 weeks, reckless 10 weeks – 1 year, intentional 1-2 years

Attempting to strike an Umpire;

1st Offence: Range: 1 year to 10 years
Negligent 1-2 years, reckless 2-5 years, intentional 5-10 years

2nd Offence: Range: 2 years to Life
Negligent 2-4 years, reckless 4-10 years, intentional 10 years -Life

(c) Using abusive, insulting, threatening or obscene language towards or in relation to an Umpire;

1st Offence: abusive/obscene 2-4 weeks, insulting/threatening 4-10 weeks

2nd Offence: abusive/obscene 4-8 weeks, insulting/threatening 8-20 weeks

(d) Behaving in an abusive, insulting, threatening or obscene manner towards or in relation to an Umpire;

1st Offence: abusive/obscene 2-4 weeks, insulting/threatening 4-10 weeks

2nd Offence: abusive/obscene 4-8 weeks, insulting/threatening 8-20 weeks

(e) Disputing a decision of an Umpire; (Prescribed Penalty offer – 1 week)

1st Offence: Yellow Card by Umpire – Cool Off for 15 minutes

2nd Offence: 1 week

(f) Use of an Obscene gesture; (Prescribed Penalty offer – 1 week)

1st Offence: 1-2 weeks

2nd Offence: 2-4 weeks.

(g) Intentionally, recklessly or negligently:-

(i) Kicking another person;

1st Offence: Range: 2-10 weeks
negligent 2 weeks, reckless 3-6 weeks, intentional 6-10 weeks

2nd Offence: Range: 4-20 weeks
negligent 4 weeks, reckless 6-12 weeks, intentional 12-20 weeks

(ii) Striking another person;

1st Offence: Range: 2-10 weeks
negligent 2 weeks, reckless 3-6 weeks, intentional 6-10 weeks

2nd Offence: Range: 4-20 weeks
negligent 4 weeks, reckless 6-12 weeks, intentional 12-20 weeks

- (iii) **Tripping another person whether by hand, arm, foot or leg;**
1st Offence: Range: 2-10 weeks
 negligent 2 weeks, reckless 2-4 weeks, intentional 4-10 weeks
- 2nd Offence:** Range: 4-20 weeks
 negligent 4 weeks, reckless 4-8 weeks, intentional 8-20 weeks
- (iv) **Engaging in Time Wasting; (Prescribed Penalty offer – 1 week)**
1st Offence: Yellow Card by Umpire – Cool Off for 15 minutes
2nd Offence: 1 week
- (v) **Charging another person; (refer to law 15.4.4)**
1st Offence: Range: 2-10 weeks
 negligent 2 weeks, reckless 3-6 weeks, intentional 6-10 weeks
- 2nd Offence:** Range: 4-20 weeks
 negligent 4 weeks, reckless 6-12 weeks, intentional 12-20 weeks
- (vi) **Throwing or pushing another player after that player has taken a Mark, disposed of the football or after the football is otherwise out of play; (Prescribed Penalty offer – 1 week)**
1st Offence: Yellow Card by Umpire – Cool Off for 15 minutes
2nd Offence: 1 week
- (vii) **Engaging in rough play against an opponent which in the circumstances is unreasonable;**
 Examples such as but not limited to: Using hands to claw, gouge or scratch an opponent in the region of the head, including the face, mouth, eyes, nose, and ears; Spear Tackles, Head Butting, Biting, Elbowing, Kneeing, Choking, Head Locking, Swinging an arm to the head region (“Coat Hanger”), Making unreasonable contact to an opponent who is marking or attempting to mark the football.
- 1st Offence:** Range: 2-10 weeks
 negligent 2 weeks, reckless 3-6 weeks, intentional 6-10 weeks
- 2nd Offence:** Range: 4-20 weeks
 negligent 4 weeks, reckless 6-12 weeks, intentional 12-20 weeks
- (viii) **Engaging in a melee, except where a player’s sole intention is to remove a teammate from the incident; (Prescribed Penalty offer – 1 week)**
1st Offence: Yellow Card by Umpire – Cool Off for 15 minutes
2nd Offence: 1 week
- (ix) **Kicking or otherwise causing the football to hit any part of a stadium roof’s structure;**
Not applicable in Western Australia
1st Offence: 1 week or a Fine equivalent to a match payment
2nd Offence: 2 weeks or a Fine equivalent to 2 match payments
- (x) **Spitting at or on another person;**
1st Offence: Range: 2-4 weeks
 negligent 2 weeks, reckless 2-3 weeks, intentional 3-4 weeks
- 2nd Offence:** Range: 4-8 weeks
 negligent 4 weeks, reckless 4-6 weeks, intentional 6-8 weeks
- (h) **Attempting to kick another person; (Prescribed Penalty offer – 1 week)**
1st Offence: Range: 1-5 weeks
 negligent 1 week, reckless 1-2 weeks, intentional 2-5 weeks
- 2nd Offence:** Range: 2-10 weeks
 negligent 2 weeks, reckless 2-4 weeks, intentional 4-10 weeks
- (i) **Attempting to strike another person; (Prescribed Penalty offer – 1 week)**
1st Offence: Range: 1-5 weeks
 negligent 1 week, reckless 1-2 weeks, intentional 2-5 weeks
- 2nd Offence:** Range: 2-10 weeks
 negligent 2 weeks, reckless 2-4 weeks, intentional 4-10 weeks

- (j) **Attempting to trip another person whether by hand, arm, foot or leg; (Prescribed Penalty offer – 1 week)**
1st Offence: Range: 1-5 weeks
negligent 1 week, reckless 1-2 weeks, intentional 2-5 weeks

2nd Offence: Range: 2-10 weeks
negligent 2 weeks, reckless 2-4 weeks, intentional 4-10 weeks
- (k) **Intentionally shaking a goal or behind post when another player is preparing to Kick or is Kicking for Goal or after the Player has Kicked a Goal and the ball is in transit; (Prescribed Penalty offer – 1 week)**
1st Offence: 1 week
2nd Offence: 2 weeks
- (l) **Wrestling another person; (Prescribed Penalty offer – 1 week)**
1st Offence: Yellow Card by Umpire – Cool Off for 15 minutes
2nd Offence: 1 week
- (m) **Using abusive, insulting, threatening or obscene language; (Prescribed Penalty offer – 1 week)**
1st Offence: abusive/obscene 1-2 weeks, insulting/threatening 2-5 weeks
2nd Offence: abusive/obscene 2-4 weeks, insulting/threatening 4-10 weeks
- (n) **Failing to leave the playing surface when directed to do so by a field umpire; (Prescribed Penalty offer – 2 weeks)**
1st Offence: 2 weeks
2nd Offence: 4 weeks
- (o) **Wearing boots, jewellery or equipment prohibited under Law 9; (Prescribed Penalty offer – 1 week)**
1st Offence: Yellow Card by Umpire – Cool Off for 15 minutes
2nd Offence: 1 week
- (q) **Any act of misconduct. (Prescribed Penalty offer – 2 weeks)**
 Examples such as but not limited to: Indecent Exposure, Biting, Instigating a Melee, Failing to follow the Direction of a Field Umpire or any Behaviour Detrimental to Football.
1st Offence: 2-4 weeks
2nd Offence: 4-8 weeks

or Law 20.2(f) below – misconduct of a serious nature

(RELATING TO THE SPECIFIC REPORTABLE OFFENCE UNDER THE ORDER OFF LAW 20.2)

20.2(f) An act of misconduct if the Umpire is of the opinion that the act constituting misconduct is serious in nature;

1st Offence: 3-6 weeks

2nd Offence: 6-12 weeks

Examples such as but not limited to **serious** acts of misconduct: Indecent Exposure, Biting, Instigating a Melee, Failing to follow the Direction of a Field Umpire or any Behaviour Detrimental to Football.



INVESTIGATION PROCEDURES / COMPLAINTS & APPEALS

Any school may refer a protest or charge, or report any infringement of the Laws of Australian Football against any other school, player or official. School generated complaints may be lodged with the **SSFAC** within 48 hours of an alleged incident, on an official school letterhead signed by the school Principal and/or HOLA making the complaint on behalf of his school.

The **SSFAC** will determine whether an INVESTIGATIONS Panel, Appeals Committee or P & D tribunal will be convened to deal with any complaints that may not fit within normal disputes processes. All complaints will be dealt with in a time frame suitable to the **SSFAC**.

The **SSFAC** may request either written or in person accounts relevant to the investigation from either of the schools involved in the protest, charge or report. Both schools shall be given at least 24 hours notice to attend either an in person interview, tribunal or both.

Any school may appeal in writing against any imposed penalty by P & D Tribunal within forty eight (48) hours of receiving notification of this penalty. The **SSFAC** shall consider any such appeal, which must be accompanied by new evidence.

The decision of the **SSFAC** in regard to any appeal shall be **final** and in the event of a failed appeal. The **SSFAC** may ask for the matter to be referred to the WAFDC for further consideration and a final determination.

The **SSFAC Chairman** reserves the right to accept or refuse the lodgement of any other complaint outside of the usual processes.

PROTESTS & DISPUTES TRIBUNAL

A Protests & Disputes Tribunal will be convened by the **SSFAC**. Schools may appeal to the **SSFAC** against the severity of tribunal penalties in writing, accompanied by new evidence within forty eight (48) hours of receiving notification of the original penalty.

SCHOOL AND COMMUNITY FOOTBALL

The WAFC sees the delivery of Australian Football as a partnership between schools and community groups.

Schools recognise that sport is an aspect of the school curriculum and is an integral part of an individual's development.

Community groups recognise the school system as an integral and positive part of football development and assist and encourage participation.

Schools and community groups/clubs should establish links to promote continuity of delivery. AFL School Ambassadors will be appointed in every school to facilitate the effective implementation of school football programs.

The use of existing school facilities by community groups is encouraged.

Schools should be receptive to interaction with community groups within and outside of school hours.

The WAFC works closely with key advisory groups;

- Education Advisory Group
- Primary School Football Advisory Committee
- Secondary School Football Advisory Committee

In designing and implementing quality football education programs.

The Education Advisory Group's foundation strategy is the induction of 1000 teachers to act as AFL School Ambassadors who will work actively in their school and cooperatively with community clubs to increase interest and participation in football.

PUBLIC STATEMENT

Public statements can only be made by the designated **WAFC spokesperson**.





TALENT

The establishment of the new WA Talent model in 2018 provides the WA football community with an opportunity to refocus its energy and resources on the most important asset we have – the players.

The new WA Talent Model has been designed following extensive consultation with key stakeholders, strong analysis of data and trends along with significant input from key partners such as the AFL and the WAFL Clubs.

The aim of the WA Talent Model is to provide a more consistent approach to player development in WA whilst providing enhanced levels of resources, capability and support to our players. The model will be clearly aligned to the AFL and National best practice and will be strategically and financially driven by the WAFC, whilst the actual delivery of the program will be underpinned by a strong partnership between the WAFL Clubs and the WAFC.

State Representation Policy

The Talent Pathway is quite clearly defined for our youth in Western Australia.

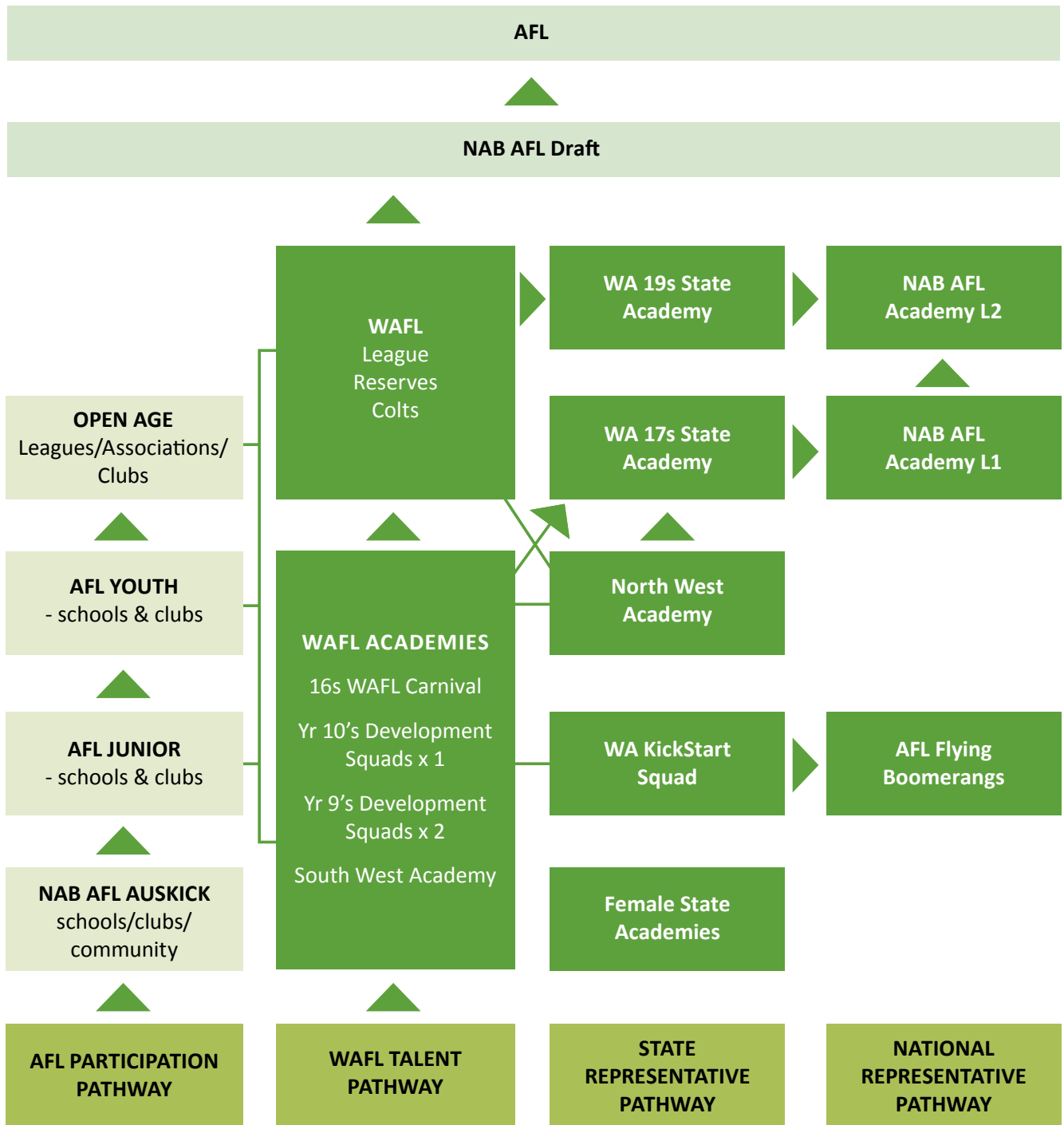
For our most talented young players, the opportunity to represent their state is an exciting and prestigious time in their development.

It should be noted that some trial match and state academy training dates can be scheduled during Community and Regional competition fixtures which can result in State Academy players being absent from Junior competition matches and training.

In reference to the official Championship matches and State Academy Trial Matches, State representatives should be credited with local home and away games for the age group they were playing in prior to WA State 16's Academy and State Schoolboys selection, in a similar fashion to the situation involving the WAFL and AFL club policy.

If you have any queries contact State Talent Manager Adam Jones at the WAFC on (08) 9381 5599.

WA TALENT/ACADEMY PATHWAY



WAFC STATE CHAMPIONSHIPS

The WAFC State Championships provides an opportunity for the Premiership Year 12 community football team from each of the three conferences to play against each other in a carnival format to determine the WAFC State Champion Team. It is a fun and evolving competition that will continue to improve and grow in stature on the community football calendar.

Season	WAFC State Champions	District
2014	Mt Lawley Inglewood JFC	East Perth District
2015	Mazenod JFC	Swans District
2016	Joondalup Kinross JFC	West Perth District
2017	Winnacott JFC	East Fremantle District
2018	N/A	
2019	Ellenbrook JFC	East Perth District
2020	No championships played due to COVID-19	
2021	No championships played due to COVID-19	
2022	No championships played due to COVID-19	

FEMALE FOOTBALL

Did you know that in 2017 there were over 90,000 female participants in WA? Let's increase this number and get all your friends involved! The pathway for a player, coach, umpire and administrator continues to evolve due to the dedication of volunteers, visionary clubs and development staff.

NAB AFL Auskick: Pre-Primary - Year 2

- NAB AFL Auskick introduces primary school aged boys and girls and their families to football
- In a weekly coaching program, children learn the skills of the game through modified activities and rules in a fun and safe environment
- There are a number of All Girls Auskick Centres available

Community Junior Girls: Year 3 - Year 6

- Girls have the choice to play with the boys play in a structured mixed gender football competition or girls only competitions.
- Junior football rules are modified to meet the skill level and safety needs

Community Youth Girls: Year 7- Year 9 & Year 10-Year 11

- Girls can play in mixed gender teams up to the age of 14
- There are girls only teams that are aligned to community junior football clubs for those that want a girls only experience or to continue their football after the age of 14

WAAFL Community Women's Competitions: Year 12+

The WA Amateur Football League (WAAFL) plans to conduct two Women's competitions with a senior community grade catering for those players wishing to participate in a competitive competition while a development grade will cater for those looking for a more social approach at an entry level.

Senior Community Women's Competition

To cater for the influx of women new to the game wishing to participate in a competitive competition. To support WAAFL players not selected to play.

- Same playing rules as senior men's competition
- Minimum age 17 years
- Even up rule will be permitted
- Scoring, ladders, finals, premiership • Best and Fairest awarded, Leading goal kickers awarded

Senior Community Women's Development Competition

To cater for women who would prefer a more social approach, appealing to entry level participants that are learning the game in a safe environment.

- Modified Wrap Tackle
- Last Possession Rule for Out of Bounds
- Minimum age 17 years
- Scoring, ladders. No finals - highest ranked team awarded season grade trophy

These Competitions will also create a pathway towards the WAAFL Competition. For those players interested that may have found the WAAFL Competition too competitive this will become the entry level competition for Senior Women's Players. This is a great way to make new friends, have fun and try something different.



Mundella WA Women's Football League (WAWFL) Competitions:

In WA there is a Women's Competition known as the Mundella WA Women's Football League <http://www.wawfl.com.au>

Mundella WAWFL Rogers Cup Year 10- Year 12

- These teams are aligned to the 9 Mundella WA Women's Football League Clubs
- A squad is selected at the beginning of the year and any players not selected to play are permitted to play community youth girls.
- Players must play for the club within their District
- Games are played Sunday Mornings before WAWFL Seniors
- Players that have represented State U15's can be permitted to play in the Rogers Cup

Mundella WAWFL Seniors

- Mundella WA Women's Football League Players must be 17 as of the 1st Jan 2018.
- There are 9 WAWFL Clubs available across Metro WA with various levels of alignment to the WAFL Clubs with two Divisions; League and Reserves.
- Players that have represented State U18's can be permitted to play in the Senior Competition
- For those players aspiring to play football at the elite level through the talent pathway we encourage them to be playing football on a regular basis within the WAWFL.

For more information on female football at any level please contact:

- Your local District Development Officer, or Regional Manager;
- WAFC Female Football Department: (08) 9381 5599

Follow Female Football in WA - www.wafootball.com.au

Facebook - @FemaleFootyWA

Twitter - @FemaleFootyWA #Followourdream

Instagram - @FemaleFootyWA #Followourdream

Youtube - FollowOurDreamTV

WA STATE ACADEMY

The overall Philosophy of the WAFC's development program is to assist all players to 'get better' as we share in the ongoing development of the player and individual with their Club of Origin, Family and School. Together we intend to help each player 'find their level' and provide them with skills and mentoring that will help them enjoy a lifelong involvement in Football. Assisting players find the balance between home, football and school or work is key to successful participation in the Academy and building young people is a valuable by product of our working together.

The Academy in 3 phases, Development, Leadership and Excellence ultimately houses the pre-elite female players to play representative football. The WA State Academy houses the AFLW18s, AFLW16s and the State 15s School Girls Programs as well as the Jan Cooper Cup. All Academy Programs focus on individual player development. Coach development and coach pathways are also a part of all programs.

State 15 Schoolgirls

State School Girls Coach Oliver Beath and his team lead education, development and representation opportunities for school based players aged 13-15. The program draws on a wide variety of emerging athletes from a diverse back ground of sports including football. For some it's the first connection in playing the great game and can lead to opportunities for those committed to improvement along the pathway. Training from February to July selected players travel to the National Schoolgirls Championships in the first week of term 3.

WA AFLW 16s

Players participating in the WA State Academy, the Jan Cooper Cup and the WAWFL's Rogers Cup are selected into the WA AFLW 16s squad to work towards selection. 2018 sees the establishment of this squad who will play domestically in a series of matches and training environments to prepare them for AFLW 18s and for League footy in the WAWFL. This program goes national in 2019 in a mirror of the pathway for males.

WA AFLW 18s

Players participating in the WA State Academy, the Jan Cooper Cup and the WAWFL's Rogers Cup and League programs are selected into the WA AFLW 18s squad to work towards selection. Players train in a pre-elite environment in preparation for Round one of the NAB AFLW 18s National Championships in Perth on June 4 and 6 2018 and Round 2 from July 6-12 on the Gold Coast. Ultimately these players are vying for selection at the 2018 AFLW draft and into League footy in WA.



Jan Cooper Cup

WA State Academy based Tournament showcases Western Australia’s best developing female football talent with four teams competing for the inaugural Jan Cooper Cup in its first year 2018.

The tournament is named in honour of WA female football pioneer Jan Cooper and will include a cross section of the best players in WA outside the AFL Women’s competition aged 15 to open age in preparation for the AFLW 16s and 18s and their Club footy.

AFLWA

The AFL has introduced a national women’s league comprising of 8 teams, with the strategy to expand in the coming years. This is an outstanding step in order to complete the talent pathway. Please visit <http://www.afl.com.au/womens>

For more information on female football at any level please contact:

- Your local District Development Officer, or Regional Manager;
- WAFC Female Football Department: (08) 9381 5599

Follow Female Football in WA - www.wafootball.com.au & www.wawfl.com.au

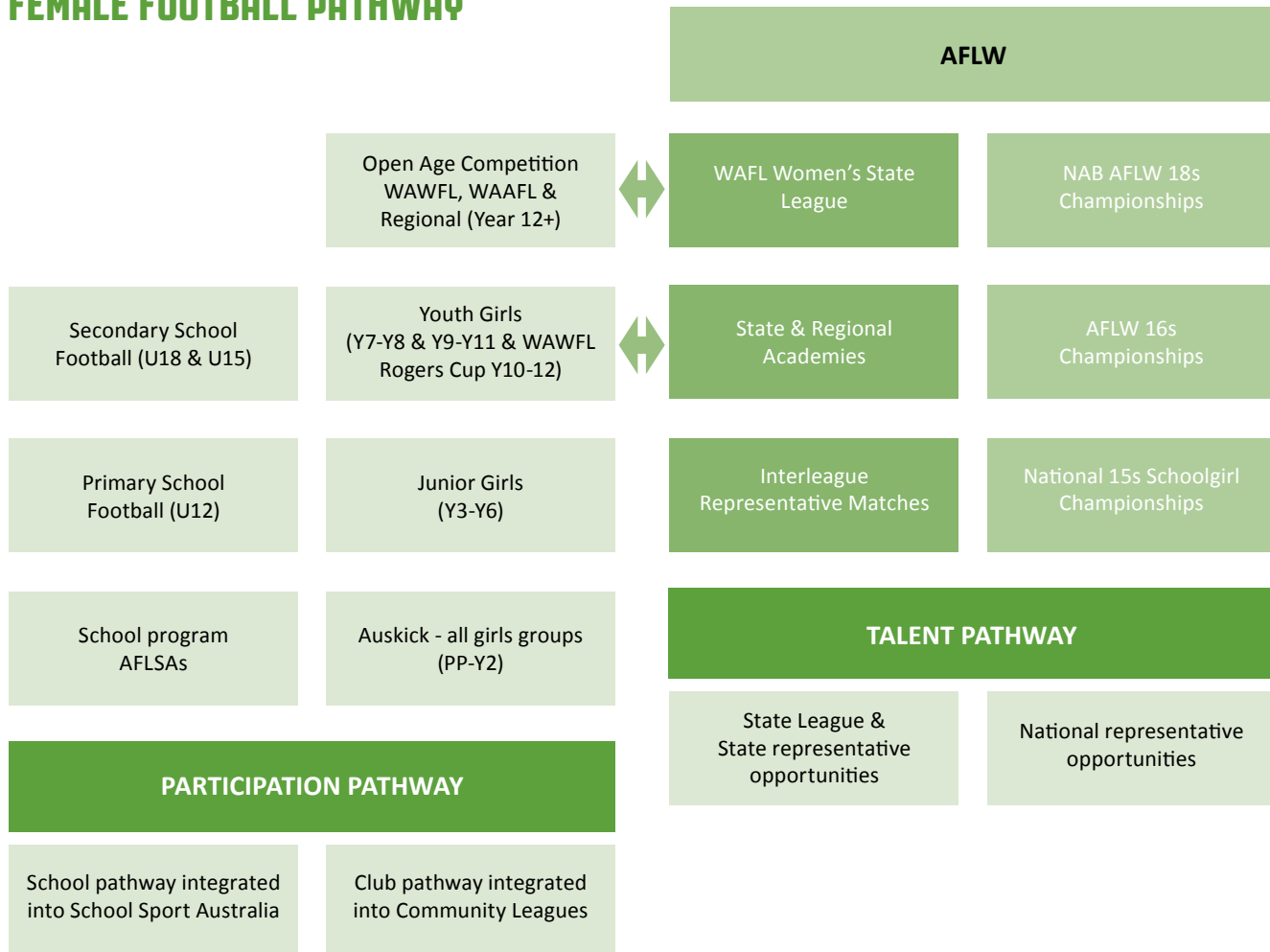
Facebook – www.facebook.com/FemaleFootballWA

Twitter – @FemaleFootyWA #Followourdream

Instagram – @FemaleFootyWA #Followourdream

Youtube – FollowOurDreamTV

FEMALE FOOTBALL PATHWAY



UMPING

Anyone interested in becoming an Umpire can log on to – www.getinthegame.com.au

For any further information, please contact your local District Development Officer or the WAFC Umpire Department on (08) 9381 5599

Philosophy

Umpiring's core values are: **Professionalism, Teamwork, Leadership and Respect.**

Our team is prepared to deliver our game plan professionally, impartially and positively to ensure the game is played within the spirit of the laws.

Accreditation

The AFL National Umpiring Accreditation Scheme is a competency-based vehicle for ensuring that Umpires attain skills and knowledge demonstrated on match day. Accreditation of Umpires gives the Umpire the confidence to better perform as an official and provides the game with more competent persons to manage the laws and safe playing of our great game.

Foundation, Development and Advanced level Accreditation is provided through the District Umpiring Coaching structure. Mentors assist the process as Umpires become accredited as competent through their learning on match day and in off the field activities such as small group learning sessions.

Junior District Umpire Coaching

The WAFC Umpiring invests in the nine metropolitan WAFC Districts to ensure umpires receive the best possible coaching and support.

The WAFC are committed to ensuring the successful delivery of the following:

- *Recruitment – recruit enough new Umpires each year to service the increased number of games being played across WA*
- *Retention – promote a quality game day environment*
- *Training/Education – ensure all Umpires have access to quality coaching and resources*
- *Match Day Appointments – ensure all Umpires are appointed to games commensurate with their level of competency*
- *Match Day Coaching – ensure all Umpires receive a minimum level of coaching on match day*
- *Umpire Mentor Program – ensure all Umpires have access to a mentor in the Foundation stage of accreditation*
- *Accreditation – ensure 100% of Umpires are accredited in WA*
- *Uniform Distribution – provide a stream-lined on-line ordering process*
- *Tribunal Guidance – ensure all Umpires receive training and support during the Tribunal process*
- *Talent Pathway - provide a clear and transparent selection process for umpires to advance through the Talent Pathway*

Growing the Quality of Our Great Game

The quality and competency of umpires adjudicating at District junior games remains one of the key essential ingredients given the pursuit of attaining and maintaining a quality game day environment. The standard and proficiency of umpiring at the junior competition level plays a fundamental role in player development and welfare whilst encouraging and promoting the value of sportsmanship.

Each “Junior District Umpire Coaching Team” remains responsible for the recruitment and educational training of their junior umpires however the challenge of umpire retention requires leadership from all junior game day stakeholders.

It is crucial that all appreciate the need for a “collective responsibility approach” in setting and maintaining a quality game day environment. WAFC Umpiring acknowledges the sound partnerships that have now developed across all junior districts and remains positively focused towards building even stronger links as we continue to strategically develop and enhance umpiring at the junior level of game participation.



Get in the Game



Become an Umpire

getinthegame.com.au



JOIN THE
CONVERSATION

GOTTA LOVE
#WAFOOTY

[f](https://www.facebook.com/wafootball) [i](https://www.instagram.com/wafootball) [t](https://www.tiktok.com/wafootball) [y](https://www.youtube.com/wafootball) WAFOOTBALL.COM.AU

Talent Pathway

Like players, Umpires are provided with the opportunity to progress along a “TALENT PATHWAY” that starts at the District Junior Competition level. The opportunity exists for young aspiring Umpires to be selected to join the Hendrie/Margetts Development Squad where additional and more specialized coaching can enhance the development process prior to them moving into senior community football.

The selection process into the WAFL or Mike Ball Talent Academy is managed by the WAFL & Talent Pathway Umpire Manager. This process primarily looks at match day performance of the Umpire at senior community level together with key benchmarks being attained. Selection into the AFL is via the WAFL & Talent Pathway Umpire Manager endorsement, with selection criteria driven from a state and national perspective.

Umpire Uniforms

Uniforms and whistles are available through XBlades at <https://xblades.com.au/WAFCCU>

Umpires should speak with their own District or Regional Umpire Managers to seek clarification on the ordering of apparel. If you have any additional questions, please contact the WAFC Umpire Department on (08) 9381 5599.





Connecting and enhancing **WA communities** through our great game

#WAFOOTY

