

SENIOR HIGH SCHOOLS COMPETITIONS HANDBOOK 2017



CO-ORDINATED BY THE WEST AUSTRALIAN FOOTBALL COMMISSION
AND SCHOOL SPORT WA



WELCOME TO THE 2017 SCHOOL FOOTBALL SEASON

The West Australian Football Commission's (WAFC) vision is to lead and engage all West Australians through a positive experience with Australian Rules football.

The WAFC sees the delivery of Australian Football as a partnership between schools and community clubs. School sport is integral to the health of the game in WA and in the education and development of all students.

The WAFC works closely with key advisory groups (Education Advisory Group/Primary School Football Advisory Committee/Secondary School Football Advisory Committee) in designing and implementing quality football education and participation programs.

We are fortunate to have wonderful program partners in Redimed, the West Coast Eagles and the Fremantle Football Club. We thank them for their continued support of school football.

The community football team at the WAFC looks forward to your continued enthusiasm for Australian Rules football and hopes you and your students enjoy participating in the various football competitions on offer.

On behalf of the WAFC, can I take this opportunity to thank all of the volunteers and staff who play a role in the delivery of school football in 2017. Your time, effort and passion is greatly appreciated by everyone in the football family.

David Lindsay
MANAGER SCHOOL PROGRAMS

OUR SPONSORS

We would like to thank our sponsors.



CONTENTS

ABOUT FOOTBALL IN WA	02	GAME DAY PLAYER EVEN UP	48
INTRODUCTION	03	VILIFICATION POLICY	49
WA FOOTBALL DISTRICT STRUCTURE	04	SAFETY	50
AFL GAME DEVELOPMENT	04	OFFICIALS	53
SCHOOLBOYS REDIMED CUP	05	CODES OF CONDUCT	54
FREO DOCKERS CUP	21	COACHING	57
EAGLES SCHOOLBOYS CUP	34	INVESTIGATION PROCEDURES	66
WAFC DEVELOPMENT STAFF CONTACTS	45	TALENT	68
SPIRIT OF JUNIOR FOOTBALL IN WA	47	UMPIRING	75
FORFEITS	47		



ABOUT FOOTBALL IN WA

The West Australian Football Commission is the caretaker of football throughout the State and responsible for the overall development of the game.

The rich history of football in the community of Western Australia stretches back to 1895. Today it is the most popular sporting code in Western Australia with more than 220,000 active participants each weekend during the season. This is more than double any other sport. On top of this football clinics are provided to approx. 300,000 West Australian children every year throughout our schools and communities across our state.

The WAFC plays an important role in funding the ongoing development of football in all communities. This ensures that football is the best resourced sporting code in the State and can have the most active role in building better communities through various development programs.

The WAFC is a not for profit sports association. It is incorporated under the Associations Incorporation Act and governed by a volunteer board that oversees the operation of all football activities throughout the State.

The WAFC's role includes ownership of the State's two AFL teams - West Coast Eagles and Fremantle Football Club (Dockers), guiding the West Australian Football League (State league competition), overseeing community football, managing umpiring and football development through participation and the talent pathway and acting as the manager of Domain Stadium (through Perth Stadium Management). Most importantly the WAFC plays a key guidance role in the ongoing enhancement of the District Development model.

This results in a significant social benefit and the creation of better communities through the active promotion of the sport and its associated values of teamwork, responsibility, respect, leadership, commitment and community participation. Advocating healthy participation for every player, volunteer, official, administrator, coach, umpire and spectator is at the forefront of our strategic priorities.

INTRODUCTION

WA Football refer to the 7 Development Objectives below in the strategic development of our game.

The WAFC collaborates with our District affiliates based on a philosophy of “State objectives, local solutions”.

- | | | |
|----------|------------------------------------|---|
| 1 | PARTICIPATION | To develop and support appropriate pathways for all segments from AFL Auskick to Open age that maximise participation. |
| 2 | COMMUNITY | To support well managed leagues, clubs and schools to motivate volunteers, umpires, coaches, teachers, school ambassadors and sports trainers for all levels of Australian football to promote quality environments and competitions. |
| 3 | W AFL & TALENT PATHWAYS | To develop the talented player, umpire, administrator and coaching pathway. Promote and enhance the talent pathway systems and structures to capture talented participants |
| 4 | FACILITIES | To collaborate on facility development for the community football network of leagues & clubs |
| 5 | ENGAGEMENT | To utilise Australian football as a vehicle to promote social inclusion, community engagement, education, leadership and employment initiatives, particularly in female, Indigenous and multicultural communities. |
| 6 | FANS | To build the relationship with community and school players, coaches, umpires, teachers, ambassadors and volunteers to develop them as fans of the AFL / WAFL Competitions and AFL /WAFL Clubs. |
| 7 | PEOPLE & CULTURE | To attract, develop and retain quality staff and develop a high performance culture in line with our values. |

WA FOOTBALL DISTRICT STRUCTURE

Both metropolitan and regional areas are divided into different geographic Districts that have an affiliation with one of the nine West Australian Football League (WAFL) clubs.

Each football District in Western Australia is governed by a District Football Development Council (DFDC) in the metropolitan area and a Regional Football Development Council (RFDC) in the regional centres. These councils are responsible for strategically planning the growth of all levels of football in the area, which includes all players, coaches, umpires, administration and volunteers.

This ensures competitions and football environments of a consistently high level of administration, opportunity for players of all levels to play and the development of a talent pathway for players to reach elite levels of football, such as the WAFL or AFL competitions.

The DFDC and RFDC have members representing all stakeholder groups within the area, including Local Government Agencies, WAFL, seniors, juniors, schools, umpiring and coaching. Each Council has a Junior Competition Committee (JCC) or league which is responsible for the conduct of the junior competition within the district.

Each District and Region has development staff. The Community Development Manager, the District Operations Manager and the Development Officer, who are based strategically in both metropolitan and regional locations and are directed by the respective District Football Development Councils. The Development staff are your key liaison point for football participation and development programs in your local area.

AFL GAME DEVELOPMENT

AFL Game Development is the national development body of football in Australia. Whilst the Australian Football League (AFL) runs the major League, AFL Game Development coordinates the development of all other levels of football in Australia. It is responsible for:

- The National Development Plan and National Participation Policies,
- Coaching Accreditation,
- Umpire Accreditation and Development,
- National Championships 16's / 18's and Women's,
- Programs to promote mass participation,
- Expanding the most comprehensive set of resources in Australian sport.

SCHOOLBOYS | CUP REDIMED | 2017



CONTENTS

Foreword	06
2017 Schoolboys Redimed Cup Timeline	07
Competition Format	07
Regulations	08
Barry Cable Division	12
Glen Jakovich Division	13
Ross Glendinning Division	15
The Legends	17
Champion Schools	18
2016 Title Holders	19
Secondary School Football Advisory Committee	20



The 30th season of the Schoolboys Redimed Cup is about to begin. School Sport WA and the West Australian Football Commission have maintained a close partnership to deliver this quality competition and have continued the cooperative links between schools and the community.

The Schoolboys Redimed Cup offers a well-organised, efficient and high quality football competition. A competition of this size requires major support. On behalf of all participants and management, I thank the WAFC, School Sport WA and Redimed as our program partner for 2017.

A special thank you to school staff who have taken on the roles of coaches, managers and support staff. I would also like to thank and acknowledge Barry Cable, Glen Jakovich, Ross Glendinning and Bill Walker for their continued patronage of the Schoolboys Redimed Cup competition.

Finally, I wish all teams a rewarding year in the Schoolboys Redimed Cup competition.

Alby Nuich

SECONDARY SCHOOLS FOOTBALL ADVISORY COMMITTEE CHAIR

2017 SCHOOLBOYS REDIMED CUP TIMELINE

DAY	DATE	EVENT
Monday	January 30	Term 1 Commences / Online Nominations Open
Friday	February 24	Nominations Close
Friday	March 10	Confirmation of Division / Draft Fixtures
Friday	March 24	Final Fixtures Published
Friday	April 7	End Term 1
Monday	April 24	Term 2 Commences
Wednesday	May 3	Fixtures Commence
Monday	June 26	SHS Country Week Commences (Walker Division)
Wednesday	June 28	Cable Division Grand Final (Venue TBC)
Thursday	June 29	Jakovich Division Grand Final (Date & Venue TBC)
Friday	June 30	Walker Division Grand Final (SHS Country Week)

COMPETITION FORMAT

- There are six metropolitan regions (North West, North East, South West, South East, Peel and ACC) played across 3 metropolitan divisions (Cable, Jakovich & Glendinning).
- The Secondary School Football Advisory Committee, which is comprised of teachers and secondary school stakeholders reviews all nominations and reserves the right to change the division that a school may have nominated for to achieve a balanced competition across all divisions.
- Country Schools: Your Regional Manager will confirm carnival date/s by the end of Term 1

DIVISIONS:

BARRY CABLE DIVISION (A Grade): Strong football schools seeking quality competition with games played across regions.

GLEN JAKOVICH DIVISION (B Grade): Schools of medium strength, seeking quality 'local' competition. Finals are played across regions.

ROSS GLENDINNING DIVISION (C Grade): 15-a-side competition specifically designed for schools entering the competition for the first time or schools with a limited football background. There are NO finals in this division.

BILL WALKER DIVISION: Only for schools who participate in the 'A' section at Senior High School Country Week.

REGION COORDINATORS

Each Regional Coordinator will:

- arrange schools into appropriate divisions;
- set fixtures for that region;
- collate results after each round of fixtures;
- maintain a premiership table for each division;
- be a contact for all schools within that region for any queries; and
- email weekly match results to the WAFC for publication on the website;

Our WAFC Umpire Coordinator coordinates all umpire appointments.

GAME DAY

Games will be played after school on WEDNESDAYS at 4pm or as close to this time as possible. **CHANGES TO GAME TIME / MATCH DAY SHOULD BE COORDINATED BETWEEN SCHOOLS ONLY AFTER NOTIFYING BOTH THE REGION COORDINATOR AND UMPIRE COORDINATOR.**

LENGTH OF COMPETITION

The first games will be played on **Wednesday 5 May**. The number of games will depend largely upon the number of schools in each Division. Schools are asked to check their exam timetable before nominating to ensure there are no obvious clashes between fixtures and upper school exams.

FINALS

- Cable Division Grand Final will be played on Wednesday 28th June (venue TBC)
- Jakovich Division Grand Final will be played on Thursday 29th June (date & venue TBC)

ALL SCHOOLS MUST SUBMIT A FULL TEAM LIST PRIOR TO THE COMMENCEMENT OF FINALS TO THEIR REGION COORDINATOR AND THE WAFC.

FIXTURES/RESULTS/LADDERS - [www.wafootball.com.au/schools/fixtures & results](http://www.wafootball.com.au/schools/fixtures&results)

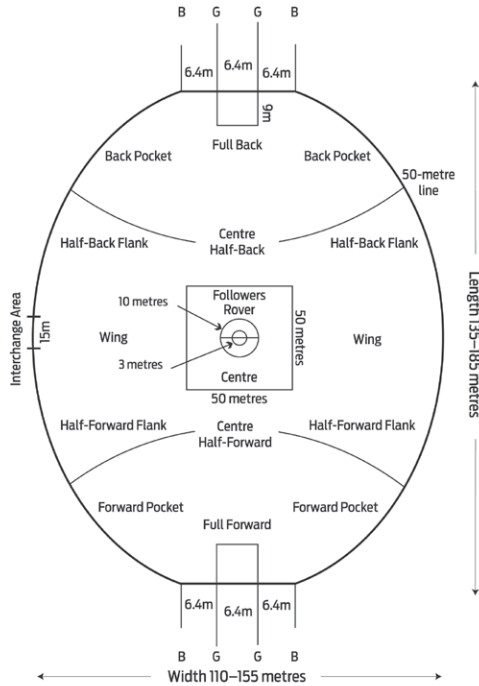
REGULATIONS

GROUNDS

Games are to be played at the home schools nominated oval. Where a school has nominated a junior football club oval or council oval as its home ground, it is that school's responsibility to ensure that the ground is ready for each home game, and liaise with the respective club or council accordingly.

Ovals for Youth age matches can range between 135m to 185m in length and 110m to 155m in width. **Goal and behind posts must be padded. Cricket pitches are to be covered. It is mandatory that the home team be responsible for goal post padding so that both goal and behind posts are covered. A game will not proceed where any posts and cricket pitches are uncovered (It is recommended the away team still brings goal post padding to games).**

Home teams are responsible for all ground markings – centre and goal squares and boundary line. Visiting schools need to inspect the oval prior to the commencement of the game to make sure it is suitable to proceed. Any concerns should be highlighted to the Central Umpire prior to play commencing. The Central Umpire will have the final say as to whether the game will proceed. **It is recommended that all schools use the WAFC endorsed JLT match day checklist. JLT match day checklists can be obtained from dclutton@wafc.com.au**



SAFETY

Spectators are to be kept from the boundary line and goal areas. Control of spectators is the responsibility of the competing schools. **Schools must have a first aid kit including ice or ice packs, along with a stretcher at the game.** Access to mobile phone communication is mandatory. If a school has a nurse, their involvement both in training school sports trainers and/or being at the game should be encouraged.

Central Umpire/s are to check teams before each game for nails, earrings, necklaces, boots etc. Any item considered dangerous is to be removed.

PUBLIC LIABILITY

The WAFC has arranged Public Liability Insurance for a sum Insured of \$20,000,000 to cover its legal liabilities. The WAFC expects each school involved in Australian Football programs to maintain public liability insurance to sufficiently cover its legal liabilities. At its own discretion each school or individual may want to consider purchasing personal accident insurance to protect it against claims for non-Medicare medical expenses arising from this Australian Football program, or any other school program.

OVERSEER

The conduct of this competition relies heavily upon the attitude of the coach. Coaches are to report to the WAFC on any behaviour detrimental to the Codes of Conduct of the competition. Should a SSFAC member be in attendance at a fixture, that person will act as the game overseer. The Advisory Committee members have the right to remove any player in breach of the Code of Conduct from the field of play. They may also lodge a request to investigate any incident outside of the rules of the game.

CHANGE ROOMS

Change rooms are to be allocated by the home team if available. The cleaning up of these rooms and the ground is the responsibility of both teams.

TEAMS

Cable Division:	18 per team, minimum 12; maximum 7 reserves
Jakovich Division:	18 per team, minimum 12; maximum 7 reserves
Glendinning Division:	15 per team, minimum 12; maximum 7 reserves
Walker Division:	18 per team, minimum 12; maximum 7 reserves

Where schools enter two or more teams, no player may play down after three games in the higher division. Furthermore, if the higher division team has a bye, all players who played in the higher division team the previous week, are ineligible to play in the lower division team in the week of that bye.

RULES

Rules for all divisions are as per the Laws of Australian Football.

UNIFORMS

All teams are to be in uniform playing gear including:

- Numbered school jumpers
- Uniform football shorts/socks

STARTING TIMES AND DURATION OF MATCHES

All games must start at 4:00pm or as close to this time as possible. Games will be of two 25 minute halves (no time on) with a five minute interval at half time.

Prior to the Game

The home team is to line up in the centre of the ground and wait for the away team to line up opposite. Players, coaches and umpires are to shake hands, both before and after the game.

At the Completion of the Game

The two coaches are to bring teams together to make any appropriate comments and to complete the match report. The Umpires are requested to participate. **THE COMPLETED MATCH REPORT IS TO BE EMAILED TO YOUR REGION COORDINATOR BY THE HOME TEAM.**

CONDITIONS OF PLAY

Every endeavour must be made to ensure games are played at the fixtured time and place. If a team forfeits a match or if conditions are not met, a 10-goal win will be awarded to the non-offending team, plus six premiership points. The offending team will be invoiced for any umpiring costs incurred.

In the circumstances where an umpire does not arrive, the game must be played, with umpiring arrangements made to the mutual satisfaction of both teams.

GAME POINTS

4 points for a win, 2 for a draw and zero for a loss. The umpire can award an additional 2 behaviour points for each team, regardless of the result. Therefore, the maximum total points a team can earn is 6 per match (i.e. 4 points for a win plus 2 behaviour points awarded by the umpire). A losing team is still eligible to earn 2 behaviour points from the umpire.

A team can lose its behaviour points if either part, or all of the below occurs:

- 2 or more yellow cards are issued to the team during or after the game
- A proven red card is issued during the game to a player or school official (school officials include coach, manager, runner, water carrier or any other persons deemed by the SSFAC to be an official)

- In the case of any deduction of behaviour points, the umpire must list the reason/s on the match report. In discussion with the match umpire, the Regional Coordinator has the final decision to either uphold or overturn any deduction of behaviour points.
- Any act that the SSFAC deems brings the game into disrepute by players or officials
- Final consideration of the behaviour points is at the discretion of the SSFAC and/or Region Coordinator

If a winning teams margin exceeds 10 goals the team will only be credited with a maximum of 60 points winning margin. This does not apply in the Cable Division.

AGE OF PLAYERS

To be eligible for selection students must:

- Be a full time student at a recognised DoE educational institution.
- 18 Years and Under - be 18 and under as at 31 December.

Students in Year 8 and 9 are not permitted to participate in the Schoolboys Redimed Cup. A lower school competition (Eagles Schoolboys Cup) exists to meet the needs of these students. Issues relating to liability rest squarely with the school. It is the schools responsibility to ensure that this rule is adhered to and schools are liable for any consequences of not doing so.

MATCH BALL (SIZE 5 AFL STANDARD)

The Home team will provide the match ball. The away team is to provide a suitable spare football. The ball will be a WAFC agreed sponsored brand.

DRAWN MATCHES

A draw will stand in home and away matches and two points will be awarded to each team, but not in finals. In finals 5 minutes each way will be played until a result is determined. If poor light or circumstances prevent play from continuing, the match shall be re-scheduled. In the event of a draw in a curtain raiser Grand Final in the Jakovich or Cable divisions, the game will be replayed at the first mutually available Wednesday after the drawn game.

A game will be deemed a final when it is an elimination game i.e. is not part of the regular weekly fixtures. A SSFAC member will make any decision on drawn games and in their absence the responsibility will fall on the Central Field Umpire(s). Refusal by any team to play 5 minutes each way will be deemed a **forfeit** on their behalf and the game will be awarded to the opposing side.

PRIVACY POLICY

Team photographs or other images may be produced during the football season by the governing body (WAFC) and may be utilized for the promotion and development of football by the governing body. Completion and lodgement of the Nomination Form indicates acceptance of this policy.

TRAVEL ASSISTANCE

To assist with travel costs a subsidy pool is available for disbursement at the conclusion of the competition, based on the total distance traveled by each school.

Applications for travel assistance close on Friday 1 September.



BARRY CABLE DIVISION

SCHOOL	COACH	PHONE	GROUND	EMAIL
CBC Fremantle	Jason Matthews	0413 262 530	Fremantle Park	jasonma@cbcfremantle.wa.edu.au
Clontarf Aboriginal College	Craig Civic	0433 056 561	School Oval	ccivich@clontarf.wa.edu.au
Comet Bay College	Nic Chidgzey	0410 566 759	School Oval	nicolas.chidgzey@education.wa.edu.au
Darling Range Sports College	Clay Mclernon	0413 654 154	Reid Oval	clay.mclernon@education.wa.edu.au
Emmanuel Catholic College	Steve Pendleton	0417 968 765	School Oval	pendleton.steve@emmanuel.wa.edu.au
Governor Stirling SHS	Andrew Davini	0423 211 042	Swan Valley Oval	Andrew.Davini@education.wa.edu.au
Mandurah Catholic College	Danny Chartres	0472 640 928	School Oval	chartres.danny@cathednet.wa.edu.au
Mater Dei College	Luke Hendricks	0452 209 456	School Oval	luke.hendricks@mdc.wa.edu.au
Mazenod College	Tim Grabski	0439 085 152	School Oval	grabski.timothy@mazenod.wa.edu.au
Newman College	Matt Connell	0411 959 437	School Oval	connell.matthew@cathednet.wa.edu.au
Sacred Heart College	Matt Sofoulis	0412 055 777	School Oval	sofoulis@sacredheart.wa.edu.au
Warwick SHS	John Batten	0417 971 530	School Oval	john.batten1@education.wa.edu.au

Region Coordinator: Ray Barrett - Kiara College, 0412 687 585

Results to be FAXED or EMAILED by the HOME TEAM before 10.30am on Thursday morning.

Fax: 9279 2469 / Email: ray.barrett@education.wa.edu.au

GLEN JAKOVICH DIVISION - NORTH EAST

SCHOOL	COACH	PHONE	GROUND	EMAIL
Chisholm Catholic College	Andrew Glover	0412 029 773	Hillcrest Reserve	a.glover@chisholmcc.wa.edu.au
Ellenbrook Secondary College	Darren Young	0401 994 523	School Oval	darren.young@education.wa.edu.au
Hampton Senior High School	Rowan Brookes	0412 764 170	Jubilee Reserve	rowan.brookes@education.wa.edu.au
La Salle College	Joe Sorgiovanni	0401 887 642	School Oval	jso@lasalle.wa.edu.au
John Forrest SHS	Reece Phoenix	0433 710 839	RA Cooke Reserve	reece.phoenix@education.wa.edu.au
John Septimus Roe ACS	Simon Weaver	0422 185 650	School Oval	sweaver@jsracs.wa.edu.au
Eastern Hills SHS	Jake Davis	0411 467 199	Mt Helena Oval	jake.davis2@education.wa.edu.au

Region Coordinator: Joe Sorgiovanni - La Salle College, 0401 887 642
Results to be FAXED or EMAILED by the HOME TEAM before 10.30am on Thursday morning.
Fax: 9274 4085 / Email: jso@lasalle.wa.edu.au

GLEN JAKOVICH DIVISION - NORTH WEST

SCHOOL	COACH	PHONE	GROUND	EMAIL
Churchlands SHS	Chris Tan	0401 632 988	School Oval	ctan1968@hotmail.com
Greenwood College	Brenden Guard	0407 146 187	School Oval	brendan.guard@education.wa.edu.au
Irene McCormack Catholic College	Ken Dillon	0403 775 069	School Oval	dillon.ken@imcc.wa.edu.au
John XXIII College	Darren Kowal	0403 574 817	School Oval	kowal.darren@johnxxiii.edu.au
Lake Joondalup Baptist College	Jonathan Grullis	0459 999 770	School Oval	gruj@ljb.wa.edu.au
Prendiville Catholic College	Stephen Lynch	0417 938 278	School Oval	slynch@prendiville.wa.edu.au
Shenton College	Sam Miles	0433 685 529	School Oval	sam.miles@education.wa.edu.au
St Mark's ACS	Pat Squire	0416 103 557	HBF Arena	psquire@stmarks.wa.edu.au
St Stephens Duncraig	Phil Timms	0427 085 169	Percy Doyle Reserve	phil.timms@ststephens.wa.edu.au
Wanneroo Secondary College	Tom Moscarda	0439 644 845	Wanneroo Showgrounds	thomas.moscarda@education.wa.edu.au
Belridge SHS	Brett Jarvis-Spinks	0400 527 379	School Oval	brent.jarvis-spinks@education.wa.edu.au
Mt Lawley SHS	Andrew Ruck	0421 026 416	Hamer Park	andrew.ruck@lawley.wa.edu.au

Region Coordinator: Justin Burt - John Forrest SC, 0413 510 912
Results to be FAXED or EMAILED by the HOME TEAM before 10.30am on Thursday morning.
Fax: 9272 6504 / Email: justin.burt@education.wa.edu.au

GLEN JAKOVICH DIVISION - SOUTH EAST

SCHOOL	COACH	PHONE	GROUND	EMAIL
Clontarf Aboriginal College 2	Con Regan	0499 590 005	School Oval	cregan@clontarf.wa.edu.au
Darling Range Sports College 2	Shaun Clifford	0413 654 154	Reid Oval	shaun.clifford@education.wa.edu.au
Kelmscott SHS	Glen Batten	0414 735 395	John Dunne Oval	Glen.Batten@education.wa.edu.au
Cecil Andrews SHS	Austin Ward	0433 702 159	School Oval	austin.ward@education.wa.edu.au
Sevenoaks Senior College	Anthony Murace	0415 435 972	Queens Park Oval	anthony.murace@education.wa.edu.au
Mazenod College 2	Beau Hemley	0409 990 221	School Oval	Hemley.beau@mazenod.wa.edu.au

Region Coordinator: Jeremy Bruce - Cecil Andrews SHS, 0416 025 999
Results to be EMAILED by the HOME TEAM before 10.30am on Thursday morning.
Email: jeremy.bruse@education.wa.edu.au

GLEN JAKOVICH DIVISION - SOUTH WEST

SCHOOL	COACH	PHONE	GROUND	EMAIL
Applecross SHS	Michael Laycock	0405 329 864	AWAY GAMES ONLY	michael.laycock@education.wa.edu.au
Leeming SHS	Shane Ellis	0407 083 251	Peter Ellis Oval	Shane.Ellis@education.wa.edu.au
Seton Catholic College	Mark McGough	0408 544 153	AWAY GAMES ONLY	mmcgough@seton.wa.edu.au
Willetton SHS	Steve Atterton	0419 944 546	AWAY GAMES ONLY	Steve.atterton@education.wa.edu.au
Corpus Christi	Stephen Kingwell	0402 402 962	School Oval	skingwell@corpus.wa.edu.au

Region Coordinator: Steve Pendleton, 0417 968 765
Results to be EMAILED or FAXED by the HOME TEAM before 10.30am on Thursday morning.
Fax: 9434 3662 / Email: Matthew.Hayes@dsr.wa.gov.au

GLEN JAKOVICH DIVISION - ACC

SCHOOL	COACH	PHONE	GROUND	EMAIL
All Saints College	Oliver Beath	0411 018 939	School Oval	oliver.beath@allsaints.wa.edu.au
Carey Baptist	Jackson Norton	0430 367 376	Carey Oval	jnorton@carey.wa.edu.au
Ursula Frayne	Craig Preshaw	0408 918 065	Higgins Park	preshaw.craig@ufcc.wa.edu.au
John Wallaston	Jessica Dunn	0431 321 364	John Wallaston Oval	jdunn@jwacs.wa.edu.au
Kennedy Baptist	Jessica Kennedy	0431 882 307	Murdoch Uni Sports Ground	jkennedy@kennedy.wa.edu.au

Region Coordinator: Trent Sharpe, 0408 958 415
Results to be EMAILED by the HOME TEAM before 10.30am on Thursday morning.
Email: march.kyle@cathednet.wa.edu.au



GLEN JAKOVICH DIVISION - PEEL

SCHOOL	COACH	PHONE	GROUND	EMAIL
Comet Bay College 2	Ben Jahn	0435 196 791	School Oval	benjamin.jahn@education.wa.edu.au
Frederick Irwin	Sheldon Migel	0424 153 165	School Oval	miguels@frederickirwin.wa.edu.au
Halls Head College	Mike Gray	0407 645 367	Peel Wood Oval	Michael.Gray2@education.wa.edu.au
Kolbe Catholic College	David Walker	0439 939 687	School Oval	d.walker@kolbe.wa.edu.au
Pinjarra SHS	Paul Galloway	0428 311 976	Sir Ross McLarty Oval	paul.galloway@education.wa.edu.au

Region Coordinator: Paul Galloway - Pinjarra SHS, 0428 311 976

Results to be FAXED or EMAILED by the HOME TEAM before 10.30am on Thursday morning.

Fax: 9531 1991 / Email: paul.galloway@education.wa.edu.au

ROSS GLENDINNING DIVISION - NORTH

SCHOOL	COACH	PHONE	GROUND	EMAIL
Servite College	Ryan Redfern	0417 734 535	Grenville Oval	redfern.ryan@servite.wa.edu.au
Helena College Senior School	Joe Kendall	0415 797 912	School Oval	jkendall@helena.wa.edu.au
Joseph Banks Secondary College	Anthony Balcombe	0423 613 044	School Oval	Anthony.balcombe@education.wa.edu.au
Kiara College	Ray Barrett	0412 687 585	School Oval	Ray.Barrett@education.wa.edu.au
Balga SHS	Bradley Stevenson	0431 920 950	School Oval	bradley.stevenson@education.wa.edu.au
Perth Modern School	Scott Marshall	0450 743 026	AWAY GAMES ONLY	scott.marshall@education.wa.edu.au
Irene McCormack Catholic College	Ken Dillon	0403 775 069	School Oval	dillon.ken@imcc.wa.edu.au

Region Coordinator: Justin Burt, 0413 510 912

Results to be FAXED or EMAILED by the HOME TEAM before 10.30am on Thursday morning.

Fax: 9272 6504 / Email: reece.phoenix@education.wa.edu.au



ROSS GLENDINNING DIVISION - SOUTH

SCHOOL	COACH	PHONE	GROUND	EMAIL
Lumen Christi	Caolan Dodgson	0414 513 307	School Oval	dodgson.caolan@lumen.wa.edu.au
Lesmurdie SHS	John Armstrong	0439 925 890	School Oval	John.Armstrong@education.wa.edu.au
St Norbert College	Luke Nuske	0401 765 124	Queens Park Oval	lnuske@norbert.wa.edu.au
Thornlie SHS	Paul Beecham	0408 051 168	Berehaven	Paul.Beecham@education.wa.edu.au
CBC Fremantle	Adrian Correia	0402 963 041	Fremantle Park	adrianc@cbcfremantle.wa.edu.au

Region Coordinator: Austin Ward - Cecil Andrews SHS, 0433 702 150

Results to be FAXED or EMAILED by the HOME TEAM before 10.30am on Thursday morning.

Fax: 9497 1715 / Email: austin.ward@education.wa.edu.au

ROSS GLENDINNING DIVISION - PEEL

SCHOOL	COACH	PHONE	GROUND	EMAIL
Coodanup Community College	Craig Callaghan	0417 973 939	School Oval	craig.callaghan@education.wa.edu.au
Serpentine-Jarrahdale Grammar	James Bristow	0403 710 405	School Oval	jbristow@sjgs.wa.edu.au
Austin Cove Baptist College	Tim Price	0415 704 568	Ross McLarty Oval	tprice@acbc.wa.edu.au
Baldvis Secondary College	Scott Smith	0433 392 153	School Oval	Scott.Smith3@education.wa.edu.au

Region Coordinator: Darren Clutton, 0418 958 753

Results to be FAXED or EMAILED by the HOME TEAM before 10.30am on Thursday morning.

Fax: 9497 1715 / Email: austin.ward@education.wa.edu.au

THE LEGENDS



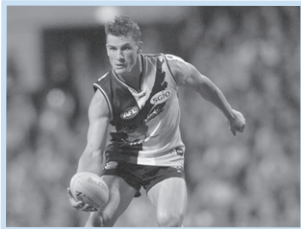
ROSS GLENDINNING (East Perth, North Melbourne, West Coast Eagles)

A superb key position player, Glendinning established an Australia-wide reputation for excellence as a key defender and forward. 286 games (56 East Perth, 190 North Melbourne, 40 West Coast Eagles) - Brownlow Medallist 1983, runner up 1982 – North Melbourne Fairest & Best 1982, 1983 - Inaugural captain of the West Coast Eagles, leading West Coast goalkicker 1987, 1988 – Kicked 327 goals. He is a member of the West Australian & Australian Football Halls of Fame.



BILL WALKER (Swan Districts)

Bill created his reputation as a champion rover during a 305 game career with Swan Districts between 1961 and 1976 - Sandover Medallist 1965, 1966, 1967, 1970 - Swan Districts' Fairest & Best 1965, 1966, 1968, 1969, 1970 - Swan Districts Premiership player 1961-1963 – 21 State games for Western Australia – Swan Districts Captain/Coach 1969-1971 – Swan Districts Captain 1972-1975 – Simpson Medallist 1967 - He is a member of the AFL's Hall of Fame, the West Australian & Australian Football Halls of Fame.



GLEN JAKOVICH (South Fremantle, West Coast Eagles)

In 1990 Glen Jakovich had the unique distinction of playing in the WA Teal Cup team, earning representation in the WAFL State team which played South Australia at Football Park and then was selected in the WA State of Origin team. While Jakovich made centre half back his own during the peak of a stellar senior career, it was at centre half forward that he made an impression in the formative years. 276 games - Club Champion 1993, 1994, 1995, 2000 - All-Australian 1994-1995 - West Coast Eagles Premiership player 1992, 1994 - West Coast Eagles player of the finals 1995, 1997 - West Coast Eagles Rookie of the Year 1991 - Runner-up South Fremantle Fairest & Best 1991. He is a member of the West Australian & Australian Football Halls of Fame.



BARRY CABLE (Perth, East Perth, North Melbourne)

A champion rover for Perth (225 games), North Melbourne (116 games) and East Perth (43 games) between 1962 and 1979 - 20 State games for Western Australia – 1 State game for Victoria – Perth Captain/Coach 1972-1973 - Sandover Medallist 1964, 1968, 1973 – Simpson Medallist 1966, 1967, 1968, 1969 – Perth Premiership player 1966-1968 – Perth Fairest & Best 1965-1969, 1971, 1973 – North Melbourne Fairest & Best 1970 – North Melbourne Premiership player 1975, 1977 – North Melbourne Coach 1982-1984 – West Coast Eagles Assistant Coach 1987-1989 - He is a member of the AFL's Hall of Fame.

Photos courtesy of Alan East



FOOTBALL COMMISSION INC.

CHAMPION SCHOOLS

	Cable Division	Jakovich Division	Walker Division	Glendinning Division
1988	Hamilton SHS	Eastern Hills SHS	N/A	N/A
1989	Hamilton SHS	Governor Stirling SHS	N/A	N/A
1990	Warwick SHS	La Salle College	Busselton SHS	N/A
1991	Wesley College	Willetton SHS	Albany SHS	North Lake SHS
1992	Newman College	Kent St SHS	Narrogin SHS	Thornlie SHS
1993	Newman College	Corpus Christi College	Narrogin SHS	John Curtin SHS
1994	Corpus Christi College	Mount Lawley SHS	Narrogin SHS	Cecil Andrews SHS
1995	Corpus Christi College	John XXII College	Narrogin Ag. College	CBC Fremantle
1996	Corpus Christi College	Lynwood SHS	Narrogin Ag. College	Cecil Andrews SHS
1997	Mazenod College	Lockridge SHS	Narrogin SHS	Clontarf AC
1998	Mazenod College	Rossmoyne SHS	Narrogin Ag. College	Maddington SHS
1999	Governor Stirling SHS	Hamilton SHS	Narrogin SHS	Clontarf AC
2000	Clontarf Aboriginal College	Prendiville Catholic College	Geraldton Senior College	Craigie SHS
2001	Clontarf Aboriginal College	John XXIII College	Cunderdin Ag. College	Clontarf AC
2002	Carine SHS	Clontarf Aboriginal College	Manjimup SHS	Leeming SHS
2003	Clontarf Aboriginal College	Mandurah Senior College	Manjimup SHS	Winthrop BC
2004	Clontarf Aboriginal College Mazenod College	Winthrop Baptist College	Geraldton SC	Leeming SHS
2005	Clontarf Aboriginal College	Sacred Heart College	Geraldton SC	John Forrest SHS
2006	Clontarf Aboriginal College	Willetton SHS	Mandurah SC	St Stephens DunCraig
2007	Clontarf Aboriginal College	CBC Fremantle	Newton Moore SHS	N/A
2008	Sacred Heart College	CBC Fremantle	Pinjarra SHS	N/A
2009	Mandurah Senior College	La Salle College	Mandurah Senior College	N/A
2010	Governor Stirling SHS	Carine SHS	Albany SHS	N/A
2011	CBC Fremantle	Winthrop Baptist College	Albany SHS	N/A
2012	Clontarf Aboriginal College	Mandurah Catholic College	Albany SHS	N/A
2013	Clontarf Aboriginal College	Corpus Christi College	Newton Moore SHS	N/A
2014	Darling Range Sports College	Warwick SHS	Great Southern GS	N/A
2015	Darling Range Sports College	Mater Dei College	Newton Moore SHS	N/A
2016	Darling Range Sports College	La Salle College	Newton Moore SHS	N/A

2016 WINNERS

In the 29th year of the competition, these schools were victorious in their respective divisions.



BARRY CABLE DIVISION
Darling Range Sports College



GLEN JAKOVICH DIVISION
La Salle College



BILL WALKER DIVISION
Newton Moore SHS

SECONDARY SCHOOL FOOTBALL ADVISORY COMMITTEE

Name	Position	Phone	Email
Alby Nuich	Chairman	0409 086 231	aandnuich@bigpond.com
David Lindsay	Manager School Programs	0426 275 035	dlindsay@wafc.com.au
Peter Smith	Director of Sport: SSWA	0409 114 422	peter.r.smith@education.wa.edu.au
Darren Clutton	Schools Competition Coordinator	0418 958 753	dclutton@wafc.com.au
Region Coordinators:			
Ray Barrett	Cable Division	0412 687 585	ray.barrett@education.wa.edu.au
Joe Sorgiovanni	NE Jakovich	0401 887 642	jso@lasalle.wa.edu.au
Justin Burt	NW Jakovich	0413 510 912	justin.burt@education.wa.edu.au
Jeremy Bruse	SE Jakovich	0416 025 999	jeremy.bruse@education.wa.edu.au
Steve Pendleton	SW Jakovich	0417 968 765	Pendleton.steven@emmanuel.wa.edu.au
Paul Galloway	Peel Jakovich	0428 311 976	paul.galloway@education.wa.edu.au
Reece Phoenix	Glendinning - North	0433 710 839	reece.phoenix@education.wa.edu.au
Austin Ward	Glendinning - South	0433 702 159	austin.ward@education.wa.edu.au
Darren Clutton	Glendinning - Peel	0418 958 753	dclutton@wafc.com.au





FREO DOCKERS | CUP 2017



Contents

Freo Dockers Cup 2016	22	White Division	29
2017 Freo Dockers Cup Timeline	23	Champion Schools	31
Competition Format	24	2016 Title Holders	32
Rules & Regulations	25	Year 7/8/9 Dockers Cup	33
Moore Division	29	Schoolgirls Committee	33

Freo Dockers Cup 2016

The Freo Dockers Cup aims to provide a range of AFL experiences to girls who would not otherwise have the opportunity to be involved in the sport. Entering its 22nd year the competition is coordinated by the West Australian Football Commission and the Schoolgirls Advisory Committee. Participation in the Freo Dockers Cup has become an important step for girls to become involved in community youth or senior women's competitions.

SCHOOLGIRLS' CUP COMMITTEE:

The committee has representatives from:

- Government and Non-Government Schools
- Western Australian Football Commission
- School Sport WA and the Associated & Catholic Colleges of WA

This Committee's charter is to promote and administer the competition, its regulations, rules and format. The Committee provides a forum for discussion and debate on issues relating to the competition and youth girls football development.





2016 Free Dockers Cup Timeline

DAY	DATE	EVENT
Monday	January 30	Term 1 Commences, Online Nominations Open
Friday	February 24	Nominations Close
Friday	March 10	Confirmation of Division, Draft Fixtures
Friday	March 24	Final Fixtures Published
Friday	April 7	End Term 1
Monday	April 24	Term 2 Commences
Tuesday	May 2	Fixtures Commence
Monday	June 26	SHS Country Week Commences (Vanderweide Division)
Tuesday	June 27	White Division Grand Final
Friday	June 30	End Term 2 Vanderweide Division Grand Final (SHS Country Week)
Monday	July 17	Term 3 Commences
Saturday	July 22	Moore Division Grand Final (Curtain Raiser to Fremantle v Hawthorn @ Domain Stadium)

Competition Format

- Played during Term 2
- Games are played after school on Tuesdays over 2 x 20 minute halves.
- There are four metropolitan regions (North West, North East, South & Peel) & 2 metropolitan divisions (Moore & White)
- The Schoolgirls Advisory Committee reviews all nominations and reserves the right to change divisions to achieve a balanced competition
- Country Schools – All competitions are coordinated by your Regional Manager. Schools will be advised of all carnival days/s by the end of Term 1

MOORE DIVISION (A Grade): Strong football schools seeking quality competition with games played across regions.

WHITE DIVISION (B Grade): Where the majority of schools compete. Teams are split into regional pools to play against other schools in their 'local' area. After the home and away games the top teams will progress to the finals.

VANDERWEIDE DIVISION: Only for schools who participate at Senior High School Country Week.

REGION COORDINATORS

Each regional Coordinator will:

- arrange schools into appropriate divisions;
- set fixtures for that region;
- collate results after each round of fixtures;
- maintain a premiership table for each division;
- be a contact for all schools within that region for any queries; and
- email weekly match results to the WAFC for publication on the website;

Our WAFC Umpire Coordinator coordinates all umpire appointments.

GAME DAYS

Games will be played after school on Tuesdays at 4pm or as close to this time as possible. **CHANGES TO GAME TIME / MATCH DAY SHOULD BE COORDINATED BETWEEN SCHOOLS ONLY AFTER NOTIFYING BOTH THE REGION COORDINATOR AND UMPIRE COORDINATOR.**

LENGTH OF COMPETITION

The first games will be played on Tuesday 3rd May. The number of games will depend largely upon the number of schools in each Division.

FINALS

The White Division grand final will be played on Tuesday 27th June (date & venue TBC)

The Moore Division Grand Final will be played on Sunday 7th August at Domain Stadium (curtain rasier to Fremantle v West Coast Eagles)

ALL SCHOOLS MUST SUBMIT A FULL TEAM LIST PRIOR TO THE COMMENCEMENT OF FINALS TO THEIR REGION COORDINATOR.

FIXTURES / RESULTS / LADDERS

Details for all regions & divisions can be viewed via the WA Football website – www.wafootball.com.au/School Football/Fixtures & Results

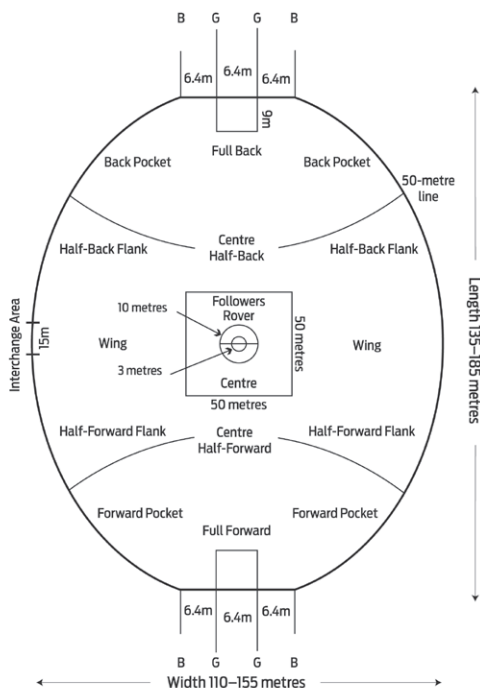
Rules & Regulations

GROUNDS

Games are to be played at the home schools nominated oval. Where a school has nominated a junior football club oval or council oval as its home ground, it is that school's responsibility to ensure that the ground is ready for each home game, and liaise with the respective club or council accordingly.

Ovals for Youth age matches can range between 135m to 185m in length and 110m to 155m in width. **Goal and behind posts must be padded. Cricket pitches are to be covered. It is mandatory that the home team be responsible for goal post padding so that both goal and behind posts are covered. A game will not proceed where any posts and cricket pitches are uncovered (It is recommended the away team still brings goal post padding to games).**

Home teams are responsible for all ground markings – centre and goal squares and boundary line. Visiting schools need to inspect the oval prior to the commencement of the game to make sure it is suitable to proceed. Any concerns should be highlighted to the Central Umpire prior to play commencing. The Central Umpire will have the final say as to whether the game will proceed. **It is recommended that all schools use the WAFC endorsed JLT match day checklist. JLT match day checklists can be obtained from dclutton@wafc.com.au**



SAFETY

Spectators are to be kept from the boundary line and goal areas. Control of spectators is the responsibility of the competing schools. **Schools must have a first aid kit including ice or ice packs, along with a stretcher at the game.** Access to mobile phone communication is mandatory. If a school has a nurse, their involvement both in training school sports trainers and/or being at the game should be encouraged.

Central Umpire/s are to check teams before each game for nails, earrings, necklaces, boots etc. Any item considered dangerous is to be removed.

PUBLIC LIABILITY

The WAFC has arranged Public Liability Insurance for a sum Insured of \$20,000,000 to cover its legal liabilities. The WAFC expects each school involved in Australian Football programs to maintain public liability insurance to sufficiently cover its legal liabilities. At its own discretion each school or individual may want to consider purchasing personal accident insurance to protect it against claims for non-Medicare medical expenses arising from this Australian Football program, or any other school program.

OVERSEER

The conduct of this competition relies heavily upon the attitude of the coach. Coaches are to report to the WAFC on any behaviour detrimental to the Codes of Conduct of the competition. Should a SSFAC member be in attendance at a fixture, that person will act as the game overseer. The Advisory Committee members have the right to remove any player in breach of the Code of Conduct from the field of play. They may also lodge a request to investigate any incident outside of the rules of the game.

CHANGE ROOMS

Change rooms are to be allocated by the home team if available. The cleaning up of these rooms and the ground is the responsibility of both teams.

TEAMS

Moore Division:	18 per team, minimum 15; unlimited reserves
White Division:	15 per team, minimum 12; unlimited reserves
VanderWeide Division:	15 per team, minimum 12; unlimited reserves

***If both teams have more than 15 players (Moore Division 18 players), the game will be played with the least number of players that both teams have, up to a maximum of 18. If a team has less than 15, the Game Day Player Even Up rules apply (refer to page 48). There will be an unlimited interchange for all games, including finals.**

Where schools enter two or more teams, no player may play down after three games in the higher division. Furthermore, if the higher division team has a bye, all players who played in the higher division team the previous week, are ineligible to play in the lower division team in the week of that bye.

RULES

Rules for all divisions are as per "Laws of Australian Football" with the following modifications:

THE BALL

A size 4 leather or synthetic football should be used. Each home team will provide the match ball. The away team is to provide a suitable spare football. The ball will be a WAFC agreed sponsored brand.



TACKLING

Tackling is permitted as per the laws of Australian Football however: No player shall be deliberately slung, dumped or thrown to the ground via any tackle

KICKING OFF THE GROUND

Not permitted except when accidental

UNIFORMS

All teams are to be in uniform playing gear including:

- Numbered school jumpers
- Uniform football shorts/socks

STARTING TIMES AND DURATION OF MATCHES

All games must start at 4:00pm or as close to this time as possible. Games will be of two twenty (20) minute halves (no time on) with a five minute interval at half time.

Prior to the Game

The home team is to line up in the centre of the ground and wait for the away team to line up opposite. Players, coaches and umpires are to shake hands, both before and after the game.

At the Completion of the Game

The two coaches are to bring teams together to make any appropriate comments and to complete the match report. The Umpires are requested to participate. **THE COMPLETED MATCH REPORT IS TO BE EMAILED TO YOUR REGION COORDINATOR BY THE HOME TEAM.**

CONDITIONS OF PLAY

Every endeavour must be made to ensure games are played at the fixtured time and place. If a team forfeits a match or if conditions are not met, a 5 goal win will be awarded to the non-offending team, plus six premiership points. The offending team will be invoiced for any umpiring costs incurred.

In the circumstances where an umpire does not arrive, the game must be played, with umpiring arrangements made to the mutual satisfaction of both teams.

GAME POINTS

4 points for a win, 2 for a draw and zero for a loss. The umpire can award an additional 2 behaviour points for each team, regardless of the result. Therefore, the maximum total points a team can earn is 6 per match (i.e. 4 points for a win plus 2 behaviour points awarded by the umpire). A losing team is still eligible to earn 2 behaviour points from the umpire.

A team can lose its behaviour points if either part, or all of the below occurs:

- 2 or more yellow cards are issued to the team during or after the game
- A proven red card is issued during the game to a player or school official (school officials include coach, manager, runner, water carrier or any other persons deemed by the SSFAC to be an official)
- In the case of any deduction of behaviour points, the umpire must list the reason/s on the match report. In discussion with the match umpire, the Regional Coordinator has the final decision to either uphold or overturn any deduction of behaviour points.
- Any act that the SSFAC deems brings the game into disrepute by players or officials
- Final consideration of the behaviour points is at the discretion of the SSFAC and/or Region Coordinator

If a winning teams margin exceeds 10 goals the team will only be credited with a maximum of 60 points (10 goals) winning margin (This does not apply in the Cable Division).

DRAWN MATCHES

A draw will stand in home and away matches and two points will be awarded to each team, but not in finals. In finals, 5 minutes each way will be played until a result is determined. If poor light or circumstances prevent play from continuing, the match shall be re-scheduled to the first mutually available Tuesday after the drawn game.

A game will be deemed a final when it is an elimination game i.e. is not part of the regular weekly fixtures. An SSAC member will make any decision on drawn games and in their absence the responsibility will fall on the Central Field Umpire(s). Refusal by any team to play 5 minutes each way will be deemed a forfeit on their behalf and the game will be awarded to the opposing side.

AGE OF PLAYERS

Players must be full-time students at the school in the year of play. **Students in Year 8 and 9 can participate in the Freo Dockers Cup. If a school is short of numbers parent consent must be obtained for students in year 8/9 if they are to participate. Those schools having year 8/9 students participating must inform the opposing team prior to taking the field. Issues relating to liability rest squarely with the school. It is the schools responsibility to ensure that this rule is adhered to and schools are liable for any consequences of not doing so.**

PRIVACY POLICY

Team photographs or other images may be produced during the football season by the governing body (WAFC) and may be utilized for the promotion and development of football by the governing body. Completion and lodgement of the Nomination Form indicates acceptance of his policy.

TRAVEL ASSISTANCE

To assist with travel costs a subsidy will be available for disbursement at the conclusion of the competition, based on the total distance traveled by each school.

Applications for travel assistance close on Friday 1 September.



Moore Division

SCHOOL	COACH	PHONE	GROUND	EMAIL
Corpus Christi College	James Howard	0439 903 992	School Oval	jhoward@corpus.wa.edu.au
John Septimus Roe ACS	Jessica Dicoski	0400 198 680	School Oval	jdicoski@jsracs.wa.edu.au
Presbyterian Ladies College	Drew McDonald	0412 744 194	Claremont Showgrounds	dmcdonald@ccgs.wa.edu.au
Emmanuel Catholic College	Jarrold Parry	0432 282 507	School Oval	parry.jarrod@emmanuel.wa.edu.au
St Mary's AGS	Tal Berman	0435 199 402	School Oval	tberman@stmarys.wa.edu.au
St Brigid's College	Jim Miller	0407 309 507	Mazenod College	miller.jim@stbrigidswa.edu.au
Kolbe Catholic College	David Walker	0439 939 687	School Oval	d.walker@kolbe.wa.edu.au
Willetton SHS	Sophie McLean	0400 298 680	School Oval	sophie.mclean@education.wa.edu.au

Region Coordinator: Jim Miller – St Brigid's College, 0407 309 507

Results to be FAXED or EMAILED by the HOME TEAM before 10.30am on Wednesday morning

Fax: 9291 8813 / Email: miller.jim@stbrigidswa.edu.au

White Division - North East

SCHOOL	COACH	PHONE	GROUND	EMAIL
Kingsway Christian College	Michael Huxtable	0409 900 863	AWAY GAMES ONLY	michael.huxtable@kcc.wa.edu.au
Northam Senior High School	Leith Woods	0408 009 300	School Oval	leith.woods@education.wa.edu.au
Swan Christian College	Ryan Faed	0422 137 477	School Oval	ryan.faed@scea.wa.edu.au
John Forrest Secondary College	Hayley McKee	0413 510 912	School Oval	hayley.mckee@education.wa.edu.au
Darling Range Sports College	Shaun Clifford	0413 654 154	School Oval	shaun.clifford@education.wa.edu.au
Helena College	Belwyn Fairclough	0448 695 525	School Oval	bfairclough@helena.wa.edu.au
Governor Stirling	Sam Cavicchio	0417 952 637	Woodbridge Riverside Park	Samuel.Cavicchio@education.wa.edu.au
Girrawheen SHS	Samatha Eaton	0400 042 664	School Oval	samantha.eaton@education.wa.edu.au
Ellenbrook Secondary College	Jaleesa Rogers	0401 921 559	School Oval	jaleesa.dearle2@education.wa.edu.au
La Salle College	Joe Sorgiovanni	0401 887 642	school Oval	jso@lasalle.wa.edu.au
Mt Lawley SHS	Andrew Ruck	0421 026 416	Hamer Park	andrew.ruck@lawley.wa.edu.au
Eastern Hills SHS	Jake Davis	0411 467 199 OR Mundaring	Mount Helena	jake.davis2@education.wa.edu.au

Region Coordinator: David Traynor - John Septimus Roe, 0437 800 948

Results to be FAXED or EMAILED by the HOME TEAM before 10.30am on Wednesday morning

Fax: 9247 9344 / Email: dtraynor@jsracs.wa.edu.au

White Division - North West

SCHOOL	COACH	PHONE	GROUND	EMAIL
Churchlands SHS	Sam Marson	0438 994 009	School Oval	smarson@churchlands.wa.edu.au
Warwick SHS	John Batten	0417 971 530	School Oval	john.batten1@education.wa.edu.au
Perth Modern School	Scott Marshall	0450 743 026	AWAY GAMES ONLY	scott.marshall@education.wa.edu.au
Iona College	Taylor Pervan	0404 622 955	Gil Fraser Reserve	tpervan@iona.wa.edu.au
Irene McCormack	Ken Dillon	0403 775 069	School Oval	dillon.ken@imcc.wa.edu.au
Wanneroo Secondary College	Tom Moscarda	0439 644 845	School Oval	thomas.moscarda@education.wa.edu.au
Lake Joondalup Baptist	Jonathan	Grullis	0407 630 437	School Oval gruj@ljbc.wa.edu.au
St Mark's Anglican College	Patrick Squire	0416 103 557	School Oval	psquire@stmarks.wa.edu.au
Joseph Banks	Anthony Balcombe	0423 613 044	School Oval	Anthony.balcombe@education.wa.edu.au
Mater Dei College	Wendy Martin	0404 946 724	School Oval	wendy.martin@mdc.wa.edu.au
Balga SHS	Bradley Stevenson	0431 920 950	School Oval	Bradley.stevenson@education.wa.edu.au
Belridge Secondary College	Jarrad Timu	0421 223 826	Ocean Ridge	jarrad.timu@education.wa.edu.au

Region Coordinator: Chris Tan – Churchlands SHS, 0401 632 988

Fax: 9441 1701 / Email: ctan@churchlands.wa.edu.au

Results to be FAXED or EMAILED by the HOME TEAM before 10.30am on Wednesday morning

White Division - South

SCHOOL	COACH	PHONE	GROUND	EMAIL
Carey Baptist College	Jackson Norton	0430 367 376	School Oval	jnorton@carey.wa.edu.au
All Saints' College	Oliver Beath	0411 018 939	School Oval	oliver.beath@allsaints.wa.edu.au
Clontarf Aboriginal College	Robert Thomson	0437 436 437	School Oval	thomson.robert@clontarf.wa.edu.au
Lumen Christi College	Erinn Campbell	0430 535 502	School Oval	campbell.erin@lumen.wa.edu.au
Santa Maria	Jo Beechey	0402 716 445	TBC	beechey.joanne@santamaria.wa.edu.au
Leeming SHS	Jenelle Heard	0423 258 084	Peter Ellis Park (Leeming SHS)	jenelle.heard@education.wa.edu.au
Kennedy Baptist College	Tim Basile	0439 957 985	Murdoch University Oval	tbasile@kennedy.wa.edu.au
Kelmscott SHS	David Faletti	0432 513 530	John Dunn Memorial Park	David.Faletti@education.wa.edu.au
Peter Carnley	Roh Weddikara	0416 332 510	Wellard	rweddikara@pcacs.wa.edu.au

Region Coordinator: Oliver Beath – All Saints College, 0411 018 939

Fax: 9310 4726 / Email: oliver.beath@allsaints.wa.edu.au

Results to be EMAILED or FAXED by the HOME TEAM before 10.30am on Wednesday morning



White Division - Peel

SCHOOL	COACH	PHONE	GROUND	EMAIL
Pinjarra SHS	Emma Boyd	0433 403 780	Sir Ross McLarty Oval	emma.boyd3@education.wa.edu.au
Mandurah Catholic College	Danny Chartres	0472 640 928	School Oval	chartres.danny@cathednet.wa.edu.au
Austin Cove Baptist	Kerrie Williamson	0407 305 834	Sir Ross McLarty Oval	kwilliamson@acbc.wa.edu.au
Halls Head Community College	Mike Gray	0407 645 367	Merlin Street Oval	Michael.Gray2@education.wa.edu.au
Serpentine-Jarrahdale Grammar School	James Bristow	0403 710 405	School Oval	jbristow@sjgs.wa.edu.au
Warnbro Community HS	Michael Watson	0422 235 829	School Oval	michael.watson@education.wa.edu.au
John Tonkin College	Isobel Bevis	0409 688 163	Rushton Oval	Isobel.Winmar@education.wa.edu.au
Baldivis Secondary College	Emily Sharp	0428 747 880	School Oval	Emily.Sharp2@education.wa.edu.au
Frederick Irwin	Sheldon Miguel	0424 153 165	School Oval	miguels@fias.wa.edu.au
Coodanup Community College	Cassie Davidson	0450 160 394	School Oval	cassie.davidson96@education.wa.edu.au

Region Coordinator: Tanya Ierace – Halls Head College, 0427 057 061

Fax: 9535 8790 / Email: tanya.ierace@education.wa.edu.au

Results to be FAXED or EMAILED by the HOME TEAM before 10.30am on Wednesday morning

Champion Schools

1996	Newman College		
1997	Kalamunda SHS		
1998	Kent St SHS		
1999	Kelmscott SHS		
2000	Newman College		
2001	Kelmscott SHS		
2002	St Brigid's College		
2003	Kelmscott SHS		
2004	All Saints College		
2005	Kelmscott SHS		
2006	Willetton SHS		
2007	Willetton SHS	Kelmscott SHS	
2008	John Septimus Roe ACS	Bunbury CGS	Bunbury CGS
2009	Willetton SHS	Winthrop Baptist College	Bunbury CGS
2010	John Septimus Roe ACS	Corpus Christi College	Katanning DHS
2011	John Septimus Roe ACS	Corpus Christi College	Katanning DHS
2012	Corpus Christi College	St Mary's AGS	Northam SHS
2013	St Mary's AGS	Kennedy Baptist College	Northam SHS
2014	St Mary's AGS	Kolbe Catholic College	Bunbury CGS
2015	Kolbe Catholic College	Emmanuel Catholic College	Bunbury CGS
2016	Kolbe Catholic College	Darling Range Sports College	Bunbury CGS

The 2015 Title Holders

In the 21st year of the competition these schools were victorious in their respective divisions. Congratulations.



Moore Division
Kolbe Catholic College



White Division
Darling Range Sports College



Vanderweide Division
Bunbury SHS



Yr 7/8/9 Freo Dockers Cup

If your school is interested in participating in the Year 7/8/9 Schoolgirls Freo Dockers Cup contact your District Development Officer.

Schoolgirls Committee

NAME	POSITION	PHONE	EMAIL
Alby Nuich	Chairman	0409 086 231	aandnuich@education.wa.edu.au
David Lindsay	Manager School Programs	0426 275 035	dlindsay@wafc.com.au
Geoff Hayes	Competition Coordinator	0409 436 334	geoffrey.hayes@education.wa.edu.au
Darren Clutton	Schools Competition Coordinator	0418 958 753	dclutton@wafc.com.au
Region Coordinators:			
Jim Miller	Moore Division	0407 309 507	miller.jim@stbrigids.wa.edu.au
David Traynor	White North East	0437 800 948	dtraynor@jsracs.wa.edu.au
Chris Tan	White North West	0401 632 988	ctan@churchlands.wa.edu.au
Oliver Beath	White South	0411 018 939	oliver.beath@allsaints.wa.edu.au
Isobel Bevis	White Peel	0409 688 163	Isobel.winmar@education.wa.edu.au
Dean Margetts	Umpires Coordinator	9381 5599	dmargetts@wafc.com.au



EAGLES | CUP SCHOOLBOYS 2017



CONTENTS

Preface	35
2017 Eagles Schoolboys Cup Timeline	36
Competition Format	37
Fixtures	37
Eligibility	38
Regulations and conditions of play	39
WAFC Responsibilities	41
School Responsibilities	42
Awards	42
Previous Winners	43

PREFACE

Welcome to the Eagles Schoolboys Cup for 2017. Our core objective remains to provide a professional competition with the capacity to deliver a safe, fun and fair environment for every stakeholder.

I would like to take this opportunity to acknowledge those who have taken on the roles of coaches, managers, officials and support staff and to thank you all sincerely for your efforts. Without your support the competition would not run.

I would also like to acknowledge the work of our Metropolitan and Regional development staff for their coordination and management of the competition.

Finally, I thank the West Coast Eagles for their commitment and support of secondary school football. Their partnership of this program ensures the Eagles Schoolboys Cup is an enjoyable experience for students, teachers, coaches and umpires.

I wish all the schools the best of luck in this year's competition.

DAVID LINDSAY
Manager School Programs



2017 EAGLES SCHOOLBOYS CUP TIMELINE

DAY	DATE	EVENT
Monday	January 30	Term 1 Commences / Online Nominations Open
Friday	April 7	End of Term 1 / Nominations Close
Friday	April 7	Regional Carnival Dates finalised & circulated
Monday	April 24	Term 2 Commences
Monday	May 8	Fixtures commence (metro schools only)
Friday	June 30	End of Term 2
Monday	July 17	Term 3 Commences
Monday	July 24	Option 1: Elimination Final (East Fremantle v Claremont)
Monday	July 31	Option 2: Elimination Final (East Fremantle v Claremont)
Monday	August 7	Quarter Finals played this week (Venues TBC)
Monday	August 14	Semi Finals played this week (Venues TBC)
Saturday	August 26	Grand Final Curtain Raiser to West Coast Eagles vs Adelaide

COMPETITION FORMAT

The Eagles Schoolboys Cup is a state wide competition for boys in Years 8 & 9. The competition enters its 35th year in 2017 and is coordinated by the West Australian Football Commission.

Competition Format:

- Played during Term 2/3 (Please refer to timeline)
- Metropolitan schools play in a WAFL district based competition to produce a champion school to represent each of the nine WAFL clubs. The 9 champion schools then compete for the Eagles Schoolboys Cup
- Country schools will be advised of their carnival day/s by their Regional Manager by the end of Term 1.
- Regional staff will coordinate a round robin competition or 1 day carnival to determine a regional champion.

FIXTURES

- AN ALLOCATED PLAYING DAY WILL BE DETERMINED BY YOUR WAFC DEVELOPMENT OFFICER IN CONSULTATION WITH COMPETING SCHOOLS
- Any changes to fixtures or venues must **first** be approved by the WAFC Football Development Officer based at your zoned WAFL Club.

Length of Competition

The first games will be played on the week commencing **Monday 8th May**. The number of games will depend largely upon the number of schools in each district/region.

Grand Final

Grand Final will be placed as a curtain raiser to the Round 23 West Coast Eagles v Adelaide match (date TBC).

Fixtures / Results / Ladders

Details can be viewed via your WAFL District website



ELIGIBILITY

- All schools with students in Years 8 and 9 are eligible to participate.
- Players must be full time students at the school to be eligible to play.
- A player enrolled in Year 8 is deemed to be a Year 8
- A player enrolled in Year 9 is deemed to be a Year 9
- A player enrolled in Year 10 is deemed to be a Year 10
- All teams must have a minimum of five (5) Year 8 students included for each game, three (3) of whom must be on the field at any one time.
- **Students in year 7 are not permitted to participate in the Eagles Schoolboys Cup. The Eagles Cup and Freo Dockers Shield exists to meet the needs of these students. It is the schools responsibility to ensure this rule is adhered to and schools are liable for any consequences of not doing so.**
- Small schools will receive concessions to enable them to be competitive:
 - (i) District High Schools may combine with other District High Schools if the combined Year 8 and 9 male population does not exceed 115 students.
 - (ii) Individual schools or combinations may play the following number of Year 10 students, dependent on population.

69 or less	3
70 to 99	2
100 to 114	1
115 and above	Nil

- The quoted number of Year 10s, as per above table, refers to the number of Year 10s included for each game.
- Schools that play more than the prescribed quota of Year 10s or less than the prescribed quota of Year 8s will forfeit **all** points for games where this disregard for the rules occurred and jeopardize their potential to be accepted for nomination in 2016.
- Schools wishing to play Year 10 students in their team must **apply in writing to Darren Clutton: Schools Competition Coordinator**. Please ensure any request to play Year 10s includes the following:
 - (i) Name, height, weight, date of birth of each student/s the school wishes to play.
 - (ii) Current enrolment numbers of males in Year 8 and 9
 - (iii) Be signed by the HOLA Health and Physical Education **and the** Principal.
This must be approved by Manager School & Junior Competitions Manager and relevant District Development Officer prior to your first fixture.
- **Year 10 players involved in development squads or elite state programs are ineligible for selection.**
- **To ensure that there are no discrepancies with player eligibility, all competing schools will be required to submit a team sheet for each finals game they participate in. A copy must be provided to the Ground Manager for each game.**

RULES & REGULATIONS

GROUNDS

Games are to be played at the home schools nominated oval. Where a school has nominated a junior football club oval or council oval as its home ground, it is that school's responsibility to ensure that the ground is ready for each home game, and liaise with the respective club or council accordingly.

Ovals for Youth age matches can range between 135m to 185m in length and 110m to 155m in width. **Goal and behind posts must be padded. Cricket pitches are to be covered. It is mandatory that the home team be responsible for goal post padding so that both goal and behind posts are covered. A game will not proceed where any posts and cricket pitches are uncovered (It is recommended the away team still brings goal post padding to games).**

Home teams are responsible for all ground markings – centre and goal squares and boundary line. Visiting schools need to inspect the oval prior to the commencement of the game to make sure it is suitable to proceed. Any concerns should be highlighted to the Central Umpire prior to play commencing. The Central Umpire will have the final say as to whether the game will proceed. **It is recommended that all schools use the WAFC endorsed JLT match day checklist. JLT match day checklists can be obtained from dclutton@wafc.com.au.**

SAFETY

Spectators are to be kept from the boundary line and goal areas. Control of spectators is the responsibility of the competing schools. **Schools must have a first aid kit including ice or ice packs, along with a stretcher at the game.** Access to mobile phone communication is mandatory. If a school has a nurse, their involvement both in training school sports trainers and/or being at the game should be encouraged.

Central Umpire/s are to check teams before each game for nails, earrings, necklaces, boots etc. Any item considered dangerous is to be removed.

PUBLIC LIABILITY

The WAFC has arranged Public Liability Insurance for a sum Insured of \$20,000,000 to cover its legal liabilities. The WAFC expects each school involved in Australian Football programs to maintain public liability insurance to sufficiently cover its legal liabilities. At its own discretion each school or individual may want to consider purchasing personal accident insurance to protect it against claims for non-Medicare medical expenses arising from this Australian Football program, or any other school program.

OVERSEER

The conduct of this competition relies heavily upon the attitude of the coach. Coaches are to report to the WAFC on any behaviour detrimental to the Codes of Conduct of the competition. Should a SSFAC member be in attendance at a fixture, that person will act as the game overseer. The Advisory Committee members have the right to remove any player in breach of the Code of Conduct from the field of play. They may also lodge a request to investigate any incident outside of the rules of the game.

CHANGE ROOMS

Change rooms are to be allocated by the home team if available. The cleaning up of these rooms and the ground is the responsibility of both teams.

RULES

Rules are as per the Laws of Australian Football. A copy can be obtained from [www.wafootball.com.au/Development/Laws of the Game](http://www.wafootball.com.au/Development/Laws%20of%20the%20Game)

UNIFORMS

All teams are to be in uniform playing gear including:

- Numbered school jumpers
- Uniform football shorts/socks

STARTING TIMES AND DURATION OF MATCHES

All games start at 4:00pm. Games will be of two 20 minute halves, with no time on, with a five (5) minute interval at half time.

Every endeavour must be made to ensure games are played at the fixtured time and place. In the exceptional circumstances where a fixture cannot be played at the scheduled time, permission must be sought from your WAFC Football Development Officer before re-fixturing. If a team forfeits or if conditions are not met, a 10-goal win will be awarded to the non-offending team, plus four premiership points. The offending team will be invoiced for umpiring costs incurred.

In the circumstances where an umpire does not arrive, the game must be played, with umpiring arrangements made to the mutual satisfaction of both teams.

Prior to the Game

The home team is to line up in the centre of the ground and wait for the away team to line up opposite. Players, coaches and umpires are to shake hands, both before and after the game.

At the Completion of the Game

The two coaches are to bring teams together to make any appropriate comments and to complete the match report. The Umpires are requested to participate. ***THE COMPLETED MATCH REPORT IS TO BE EMAILED TO YOUR DEVELOPMENT OFFICER BY THE HOME TEAM.***

AGE OF PLAYERS

Players must be full-time students at the school and in year 8 and 9 to play. **Issues relating to liability rest squarely with the school. It is the schools responsibility to ensure that this rule is adhered to and schools are liable for any consequences of not doing so.** Year 7 students are not permitted to participate in the Eagles Schoolboys Cup competition.

MATCH BALL (SIZE 4 AFL STANDARD)

The Home team will provide the match ball. The away team is to provide a suitable spare football. The ball will be a WAFC agreed sponsored brand.

DRAWN MATCHES

A draw will stand in home and away matches and two points will be awarded to each team, but not in finals. In finals 5 minutes each way will be played until a result is determined. If poor light or circumstances prevent play from continuing, the match shall be re-scheduled. In the event of a draw in a curtain raiser, the game will be replayed at the first mutually available weekday after the drawn game. A game will be deemed a final when it is an elimination game i.e. is not part of the regular weekly fixtures. A WAFC staff member will make any decision on drawn games and in their absence the responsibility will fall on the Central Field Umpire(s). Refusal by any team to play 5 minutes each way will be deemed a forfeit on their behalf and the game will be awarded to the opposing side.

PRIVACY POLICY

Team photographs or other images may be produced during the football season by the governing body (WAFC) and may be utilized for the promotion and development of football by the governing body. Completion and lodgement of the Nomination Form indicates acceptance of this policy.

TRAVEL ASSISTANCE

To assist with travel costs a subsidy will be available for disbursement at the conclusion of the competition, based on the total distance traveled by each school.

Applications for travel assistance close on Friday 1 September.

WAFC RESPONSIBILITIES

- Arrange schools into appropriate divisions
- Set fixtures for that district/region
- Collate results after each round of fixtures
- Maintain a premiership table for each division
- Be a contact for all schools for any queries
- Publish weekly match results on the District's website
- Liaise with schools and/or District Umpires Coach to provide field umpire for each match
- Supply match football to each team
- Provide payment for umpires
- Supply score cards and match report sheets
- Assist with travel costs incurred by schools
- Promote and actively encourage accreditation of **all** school coaches
- Monitor Year 10 inclusion in teams

SCHOOL RESPONSIBILITIES

- Attend competition launch / coaches' meeting prior to the start of the competition.
- Supply timekeeper for HOME games.
- Supply interchange steward for finals games only.
- Supply correctly attired boundary umpire and goal umpire.
- Ensure all players are **suitably** attired in school playing apparel, with correct socks, shorts, boots and jumpers.
- Supply Level One accredited coach (i.e. Level One).
- Home team to forward results to your WAFL Football Development Officer following all fixtures. Please ensure full umpire's details, including address, are completed on match report form.
- If applicable, apply in writing to the WAFC for permission to include Year 10 students in the team.

AWARDS

- Each WAFL club's champion metropolitan and country school will be presented with a shield at a school assembly at the conclusion of the competition
- The Champion school to be awarded the Eagles Schoolboys Cup and Championship medallions
- The runners-up to receive Grand Final medallions
- The best player in the Grand Final will receive the Ross Davis Medal.



PREVIOUS WINNERS

1983	Belmont SHS	2000	Aquinas College
1984	Christ Church Grammar School	2001	Mazenod College
1985	Aquinas College	2002	Trinity College
1986	Hamilton SHS	2003	Trinity College
1987	Trinity College	2004	Sacred Heart College
1988	Guildford Grammar School	2005	Trinity College
1989	Narrogin SHS	2006	Hale School
1990	Aquinas College	2007	Trinity College
1991	Northam Districts	2008	Trinity College
1992	Northam SHS	2009	Trinity College
1993	Guildford Grammar School	2010	Trinity College
1994	Corpus Christi College	2011	Trinity College
1995	South Avon	2012	Darling Range Sports College
1996	Corpus Christi College	2013	CBC Fremantle
1997	Aquinas College	2014	Comet Bay College
1998	Carine SHS	2015	Comet Bay College
1999	Carine SHS	2016	Comet Bay College



2016 Eagles Schoolboys Cup Champions – Comet Bay College

GENERAL COMPETITIONS INFORMATION



METROPOLITAN DEVELOPMENT STAFF CONTACTS

METRO NORTH West Perth, Claremont, Subiaco

Community Development Manager	Andrew Ridley	aridley@wafc.com.au	0402 794 016
CLAREMONT Development Officer	Declan Cormack	dcormack@wafc.com.au	0484 843 880
SUBIACO Development Officer	Matt DeBarro	mdebarro@wafc.com.au	0402 794 016
WEST PERTH Development Officer	Graham Mills	gmills@wafc.com.au	0409 084 483

METRO CENTRAL East Perth, Swan Districts, Perth

Community Development Manager	Isaac Stewart	istewart@wafc.com.au	0429 000 347
EAST PERTH Development Officer	Corey Ranger	cranger@wafc.com.au	0430 868 512
PERTH Development Officer	Chris Brown	cbrown@wafc.com.au	0412 676 857
SWANS Development Officer	Christian Tuffili	ctuffili@wafc.com.au	0430 115 441

METRO SOUTH Peel, East Fremantle, South Fremantle

Community Development Manager	Bradd Gardiner	bgardiner@wafc.com.au	0438 953 055
PEEL Development Officer	Elly Lambkin	elambkin@wafc.com.au	0438 677 700
EAST FREMANTLE Development Officer	Daren Bell	dbell@wafc.com.au	0438 952 487
SOUTH FREMANTLE Development Officer	Regan Atkinson	ratkinson@wafc.com.au	0437 587 161

REGIONAL DEVELOPMENT STAFF CONTACTS

GOLDFIELDS REGION Regional Manager	Gemma Harrison	gharrison@wafc.com.au	0417 179 463
GREAT SOUTHERN REGION Regional Manager	Tom Moir	tmoir@wafc.com.au	0428 428 440
KIMBERLEY REGION Garnduwa	Mick Albert	albert@garnduwa.com.au	0418 938 167
MID WEST REGION Regional Manager	Kristian Diction	kdiction@wafc.com.au	0429 914 220
MIDLANDS REGION Regional Manager	Glen Collins	gcollins@wafc.com.au	0417 920 817
PILBARA REGION Regional Manager	Vicki Agnew	vagnew@wafc.com.au	0455 661 633
SOUTH WEST REGION Regional Manager	Glenn Omodei	gomodei@wafc.com.au	0419 955 173
WHEATBELT REGION Regional Manager	Paul Reid	preid@wafc.com.au	TBA



SPIRIT OF JUNIOR FOOTBALL IN WA

Every participant understands that Junior Football in Western Australia is delivered to the Community with the Spirit of the Game in mind.

It is incumbent on every participant irrespective of their place in the game, to ensure that they will,

- **Not focus on winning at all cost** and understand that the role of Junior Football is to foster the development of Junior Players, Volunteers, Umpires, Coaches and Officials. Learning to win and lose is part of the developmental journey of a participant but must remain secondary to the primary focus of junior player development.
- Maximise the enjoyment and development of junior footballers.
- Provide our children with a game environment that is safe, fun and fair.
- Ensure that the values which add to the spirit of our game, which include fairness, equality, respect and teamwork are encouraged and celebrated.
- Uphold, promote and protect the Rules, Laws, Codes, Policies and Spirit of the game.
- Not accept poor behaviours around our game and deter practices that undermine our games environments (Coaching, Playing, Volunteering, Spectating and Umpiring).
- Adhere to any directive issued by the games controlling bodies in the best interests of achieving the above.

FORFEITS

In the AFL Youth competition a match shall be deemed to be forfeited if either team consists of less than 12 players.

- Where a team fails to appear or where a team forfeits a match, full premiership (4) points and even subsequent E-Points shall be awarded to the team receiving the forfeit.
- The team receiving the forfeit should be credited with 60 points.
- The team that forfeited the match shall be credited 0 points.
- In the case of a forfeited match, team lists showing the names of all players of both teams in attendance shall be submitted to the field umpire.
- In the event of any forfeit both Clubs involved shall advise the **JCC Executive** in writing of the date of the match and include the reasons for the forfeit.
- The **JCC Executive** shall be empowered to fine either or both Clubs if in its opinion the reasons given for the forfeit are not acceptable.
- Any Club that forfeits any match shall be fined \$250 or otherwise penalised, at the discretion of the **JCC Executive**.
- All players listed on both team sheets shall be credited as having played that game for the purposes of finals eligibility and historical records.

GAME DAY PLAYER EVEN UP

Player even up must be applied for the entire game including finals. This section makes provisions for increased player welfare.

- Modified Rules Football - A match of modified football (Year 4– Year 7’s)
 - has no minimum number of players; and
 - the even up rule will apply when one or two teams have less than 15 players; and
 - all additional players will be offered to the lesser numbered team; and
 - each team shall have even numbers of players until teams comprise of 15 players.
 - Junior Bylaw procedures apply in the case of Yellow and Red cards
 - Youth Rules Football - A match of Youth football (Year 8 – Year 12):
 - has minimum and maximum player numbers; and
 - the even up rule will apply when one or two teams have less than 18 players; and
 - an even number of players from both teams are to start the match on the field; and must be on the field at all times except if a red or yellow card is issued. Once the 15 minute penalty for the red or yellow Card has been served then an even number of players from both teams must be on the field.
 - If a player is injured and the team has no player to replace the injured player, the opposing team must even up immediately.
- Even-Up Yellow Card Conditions:
An offender ordered off for a yellow card offence during an even-up situation cannot be replaced for 15 minutes of game time.
- If a side can only field between 12 and 17 players the coach with the greater number of players must offer all additional players to the lesser numbered team to field up to the maximum of 18 players per team; and
 - Players must be rotated so that no single player plays more than 1 quarter per match for the opposition team.
 - Junior By Law procedures apply in the case of Yellow and Red cards
 - Any team that refuses the even up provisions will be deemed as losing the game and forfeiting any points and percentages earned during that game.
 - A Club, in which any one of their coach refuses the even up provisions will be required to explain as to why a team/ or club will not be penalized.

Players, who are lent to another team, must have their names entered into that new team list with their original team stated in brackets after their name.

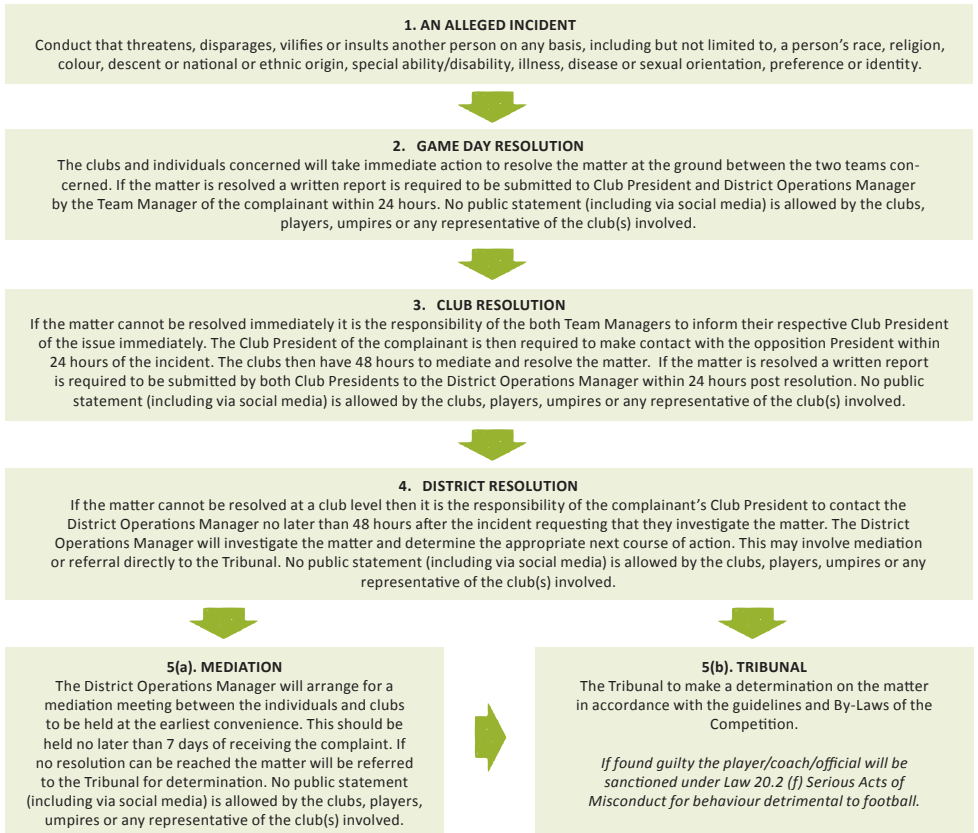
- Penalties - Even Up penalties are as follows:
 - Junior Bylaw procedures apply in the case of Yellow and Red cards
 - Any team that refuses the even up provisions will be deemed as losing the game and forfeiting any points and percentages earned during that game.
 - A Club, in which any one of their coach refuses the even up provisions will be required to explain as to why a team/ or club will not be penalized.
 - Any coach who disregards this rule will be issued with deregistration citations as stated in this manual
 - Any Club, player or team official, considered by the JCC Executive to be in breach of this By-Law, may be fined, deregistered, suspended or otherwise penalized as decided by the JCC Executive according to its agreed penalties.

VILIFICATION POLICY

Vilification to any degree is totally unacceptable at any level of football (including Junior Football) and refers to any person including, but not limited to, players, officials, coaches, members, umpires, spectators, and parents that acts towards or speaks to any other person in a manner, or engages in any other conduct, which threatens, disparages, vilifies or insults another person on any basis, including but not limited to, a person's race, religion, colour, descent or national or ethnic origin, special ability/disability, illness, disease or sexual orientation, preference or identity.

All those involved in Junior Football have the right to be involved in an environment that is free from vilification and/or harassment. The Junior Competition should take an extremely firm stance on eliminating this type of behaviour from the game.

The vilification resolution process is:



Any adult that is found to have vilified a person at Junior Football, or has been found to have encouraged others to vilify other people, should receive significant penalties from the Tribunal.

There is absolutely no place for vilification of any nature in Football!

SAFETY

USE OF STRETCHER / INJURED PLAYERS

In all games, including finals, any player who in the opinion of the injured player's team officials requires the assistance of a stretcher shall be attended by a suitably trained and certified medical officer in the practice of use of a stretcher prior to removal of that player, UNLESS the player is capable and conscious enough to place themselves on the stretcher without assistance.

If the stretcher has been called for by an authorised person, then the player will be removed from the playing field via the most direct route for play to recommence. The injured player may be replaced through the interchange.

If a player is removed from the field on a stretcher then that player will not take any further part in the game whatsoever.

If, in the opinion of a field umpire or team medical officer, a player cannot be moved from the field of play due to the severity of an injury, then play may be abandoned for the game at the discretion of a meeting between the two Coaches and the Field Umpire and or any **SSFAC member** if present.

The **SSFAC** shall be advised of any such abandonment for the purpose of either rescheduling the fixture or determining a result according to the progress score and point of the game at which the game was abandoned.

MOUTH GUARDS

It is strongly recommended that all players wear a mouth guard when either training for or playing football.

BLEEDING & BLOOD BORN INFECTIONS

No school shall allow any player to participate in any match or continue to participate in any match for so long as such player:

- (a) is bleeding;
- (b) has blood on any part of his/her person or uniform.

Only the field umpires can direct a player to leave the playing field, thereby ensuring the team is not disadvantaged by playing one team member short for any period of time. A player, who refuses to promptly obey a direction of an umpire given in accordance with this policy, shall be reported by the umpire for misconduct in that he/she refused to leave the field.

Upon being directed to leave the playing arena, a player shall not return to take any further part in any match until and unless:

- (a) the cause of any such bleeding has been abated;
- (b) the injury is securely covered to the extent that no blood is visible;
- (c) any bloodstained article of uniform has been removed and replaced;
- (d) any blood on any part of a player's person has been thoroughly cleansed and removed.

CONCUSSION

Concussion occurs when, after a blow to the head, there is brain injury with some immediate disturbance of brain function. Any player showing the signs or symptoms of concussion should be removed from the field immediately and referred to a medical practitioner. A player who has suffered concussion with or without loss of consciousness should not participate in any match or training session until he/she is fully recovered and has been cleared by a thorough medical examination.

All players sustaining a concussion require a medical clearance before the resumption of training or playing.

Key Considerations

- Any player who has suffered a concussion or is suspected of having a concussion must be medically assessed as soon as possible after the injury and must not be allowed to return to play in the same game or train in the same practice session. If in doubt, sit them out!
- There should be a trained first aider at every game and the principles of first aid should be used when dealing with any player who is unconscious or injured.
- A concussed player must not be allowed to return to school or return to training or playing before having a formal medical clearance.
- The child is not to return to play or sport until they have successfully returned to school/learning, without worsening of symptoms. Symptom assessment in the child often requires the addition of parent and/or teacher input.
- It is reasonable for a child to miss a day or two of school after concussion, but extended absence is uncommon.

For the updated Concussion Management Document please visit: www.wafootball.com.au

Pocket CONCUSSION RECOGNITION TOOL



To help identify concussion in children, youth and adults



RECOGNIZE & REMOVE

Concussion should be suspected if one or more of the following visible clues, signs, symptoms or errors in memory questions are present.

1. Visible clues of suspected concussion

Any one or more of the following visual clues can indicate a possible concussion:

Loss of consciousness or responsiveness
Lying motionless on ground / Slow to get up
Unsteady on feet / Balance problems or falling over / Incoordination
Grabbing / Clutching of head
Dazed, blank or vacant look
Confused / Not aware of plays or events

2. Signs and symptoms of suspected concussion

Presence of any one or more of the following signs & symptoms may suggest a concussion:

- Loss of consciousness
- Dizziness
- Nausea or vomiting
- "Pressure in head"
- Irritability
- Amnesia
- Nervous or anxious
- Sensitivity to noise
- Headache
- Balance problems
- Feeling slowed down
- More emotional
- Sensitivity to light
- Fatigue or low energy
- Neck Pain
- Difficulty remembering
- Seizure or convulsion
- Confusion
- Drowsiness
- Blurred vision
- Sadness
- Feeling like "in a fog"
- "Don't feel right"
- Difficulty concentrating

© 2013 Concussion in sport group

3. Memory function

Failure to answer any of these questions correctly may suggest a concussion.

- "What venue are we at today?"*
"Which half is it now?"
"Who scored last in this game?"
"What team did you play last week / game?"
"Did your team win the last game?"

Any athlete with a suspected concussion should be **IMMEDIATELY REMOVED FROM PLAY**, and should not be returned to activity until they are assessed medically. Athletes with a suspected concussion should not be left alone and should not drive a motor vehicle.

It is recommended that, in all cases of suspected concussion, the player is referred to a medical professional for diagnosis and guidance as well as return to play decisions, even if the symptoms resolve.

RED FLAGS

If **ANY** of the following are reported then the player should be safely and immediately removed from the field. If no qualified medical professional is available, consider transporting by ambulance for urgent medical assessment:

- ▶ Athlete complains of neck pain
- ▶ Increasing confusion or irritability
- ▶ Repeated vomiting
- ▶ Seizure or convulsion
- ▶ Weakness or tingling / burning in arms or legs
- ▶ Deteriorating conscious state
- ▶ Severe or increasing headache
- ▶ Unusual behaviour change
- ▶ Double vision

Remember:

- In all cases, the basic principles of first aid (danger, response, airway, breathing, circulation) should be followed.
- Do not attempt to move the player (other than required for airway support) unless trained to do so.
- Do not remove helmet (if present) unless trained to do so.

from McCrory et al., Consensus Statement on Concussion in Sport. Br J Sports Med 47 (5), 2013

© 2013 Concussion in sport group

UMPIRES HANDSHAKE POLICY

Coaches are expected to shake the hand of the match day umpires both pre and post game.

This mark of respect will reinforce our commitment to influencing positive game day environments, and stands as an excellent example of behaviour from the Coach to Players and Spectators. Coaches should also shake each other's hand both pre and post match.

CONCUSSION MANAGEMENT IN AUSTRALIAN FOOTBALL

Concussion refers to a disturbance in brain function that results from trauma to the brain. The changes are temporary and the majority of players recover completely if managed correctly.

Key Components of Concussion Management

1. **Recognise the injury**
2. **Remove the player from the game**
3. **Refer the player to a medical doctor for assessment**
4. **Ensure the player has received medical clearance for a graduated return to training**

There should be a trained first aider at every game and the principles of first aid, including management of the cervical spine, should be used when dealing with any player who is unconscious or injured.

Recognise Concussion

1. Visible clues of suspected concussion

Any one or more of the following visual clues can indicate a possible concussion:

• Loss of consciousness or responsiveness	• Lying motionless on ground / Slow to get up
• Dazed, blank or vacant look	• Grabbing / Clutching of head
• Unsteady on feet / Balance problems or falling over / Incoordination	• Confused / Not aware of plays or events

2. Signs and symptoms of suspected concussion

Presence of any one or more of the following signs & symptoms may suggest a concussion:

• Loss of consciousness	• Headache	• Seizure or convulsion	• Nervous or anxious
• Dizziness	• Balance problems	• Confusion	• Neck Pain
• Nausea or vomiting	• Feeling slowed down	• Drowsiness	• "Don't feel right"
• "Pressure in head"	• More emotional	• Blurred vision	• Sensitivity to noise
• Irritability	• Sensitivity to light	• Sadness	• Difficulty remembering
• Amnesia	• Fatigue or low energy	• Feeling like "in a fog"	• Difficulty concentrating

Manage Concussion

- ✓ Any player who has suffered a concussion or is suspected of having a concussion must be **IMMEDIATELY REMOVED FROM PLAY** and medically assessed as soon as possible after the injury. **They must not be allowed to return to play in the same game or practice session.**
- ✓ A concussed player must not return to school or return to training or playing **before having a formal medical clearance.**
- ✓ A concussed child (player aged 5-17) is not to return to play or sport until they have successfully returned to school/ learning, without worsening of symptoms. Symptom assessment in the child often requires the addition of parent and/or teacher input.
- ✓ The concussion rehabilitation program should be supervised by the treating medical practitioner and should follow a graded, symptom limited progression.

In the best practice management of concussion in football, the critical element remains the welfare of the player, both in the short and long term.

"IF IN DOUBT, SIT THEM OUT"



AFL Research Board
AFL Medical Officers' Association

OFFICIALS

THE COACH

The Coach, will be a nominated teacher at the school. If a teacher cannot be found, then the school should arrange for a suitable person from the local community to be interviewed by the school Principal and/or HOLA Health and Physical Education for the coaching position. It is a condition of this competition that a teacher at the school must be associated with the team and in attendance for the duration of the game. The Coach's role is paramount. He/she is responsible primarily for the on and off field actions of their players and therefore must set standards of discipline.

FIELD UMPIRES

WA Football supports a **ZERO TOLERANCE** stance against any form of umpiring or official abuse. Any breaches of these codes will result in penalties and sanctions directed at the person responsible, the team and possibly the school.

The Umpires Coordinator shall oversee a panel of umpires from which they will appoint a trained umpire or umpires to officiate at each match. Further, the WAFC encourages qualified students or staff to submit their names to be included on the umpiring panel. Such persons will be paid for their services. Umpires are required to bring Red/Yellow cards to all games.

TEACHERS COULD BE APPROACHED TO UMPIRE AFL INTERSCHOOL CUP GAMES WHEREVER NECESSARY. IF SCHOOLS FAIL TO NOTIFY THE UMPIRE'S COORDINATOR OF ANY ALTERATION TO/OR FORFEIT OF A SCHEDULED MATCH, THE FORFEITING TEAM WILL BE INVOICED FOR THE UMPIRING COSTS INCURRED.

GOAL UMPIRES

Each team must supply one mature goal umpire. He/she must have a white coat, goal flags and a scorecard. Goal umpires must check scores at half time and after the match. Field umpires are to supervise this.

BOUNDARY UMPIRES

Each team shall supply a boundary umpire who shall be correctly attired and of sufficient knowledge and maturity to correctly throw the ball into play and carry out all other responsibilities of the position.

FINALS UMPIRES

These umpires will be organised by the Umpire Coordinator.

Should a field umpire not be available to officiate at any match the opposing coaches or team officials may agree to appoint any person to act in that capacity. In such case the appointed umpire shall have the same responsibilities and authority as any umpire appointed by the Umpires Coordinator.

TIMEKEEPER

The home team is to supply a timekeeper who will have a siren or a hooter. A stopwatch is to be used at all times to ensure accurate times are maintained. The WAFC will supply a timekeeper for all curtain raiser matches unless advised otherwise.

MATCH REPORTS

These are the responsibility of the **HOME** team and are to be completed on the day and signed by the coaches and umpires. Offending players are to be noted in the report. **The report is to be forwarded to the Region Coordinator by 10.30am the day after the game. This is essential to compile regular premierships tables.**

CODES OF CONDUCT

The major objective of Junior Football is to provide an opportunity for all children to play Australian Football in a safe environment designed to maximise the acquisition of skill and provide enjoyment (Fun). The following Codes of Conduct, if followed by all people involved in our junior game, should ensure the fulfilment of this important objective. The West Australian Football Commission Football Affairs Committee strongly advises that all persons involved be issued with copies of the appropriate code of conduct. WA Football supports acts of sportsmanship (hand shaking etc) between players, coaches, administrators, umpires etc.

RED FLAG – Game Environment Filter

Protecting and enhancing our Game Environment will always be a strategic focus for Football. In 2016, we will see the ongoing enhancement of a Game Environment Filter, **RED FLAG**. This will assist in monitoring all football segments, and the standard of the environment and the spirit in which they are played. To this end an online filter has been developed whereby key football stakeholders are able to identify and bring to the attention of governing bodies any undesirable behaviours and actions that may breach any of the Codes of Conduct or By-Law 1 “The Spirit of Junior Football”.

The Red Flag notification is completed online with confidentiality assured within the process. Issues that are flagged that require official intervention will be overseen by the WAFC Participation Manager in consultation with the specific League Officials and WAFC District/Regional Staff. The Red Flag filter will apply to everyone involved in Football from coaches, spectators, and players to volunteers and Club Administrators.

Club Presidents, District Officials, Umpires and WAFC Game Development Staff will have authority to access the filter via a special password and link. Please contact the WAFC Participation Manager Troy Kirkham to secure your access.

ADMINISTRATOR’S AND VOLUNTEERS CODE OF CONDUCT

- Understand and adhere to **BYLAW #1 ‘The Spirit of Junior Football’**.
- Ensure that equal opportunities for participation in sports are made available to all children, regardless of ability, size, shape, gender, age, disability or ethnic origin.
- Actively promote Positive Game Day Environments with Junior Football and the importance of E-Point structures to the game.
- Ensure that rules, equipment, length of games and training schedules take into consideration the age, ability and maturity level of participating children.
- Ensure that adequate supervision is provided by qualified and competent coaches and officials capable of developing appropriate sports behaviour and skill technique.
- Remember that children participate for enjoyment and play down the importance of rewards.
- Provide clinics aimed at improving the standards of coaching and officiating, with an emphasis on appropriate behaviour and skill technique.
- Ensure that parents, coaches, sponsors, trainers and participants understand their responsibilities regarding fair play.
- Modify rules and regulations to match the skill level of children and their needs.
- Condemn unsporting behaviour and promote respect for all opponents.
- Publicly encourage rule changes which will reinforce the principles of participation for fun and enjoyment.
- Ensure that your behaviour is consistent with the principles of good sporting behaviour.
- Make a personal commitment to keep yourself informed of sound officiating principles and the principles of growth and development of children.
- Ensure promotion, well-being and safety of umpires and encourage good sportsmanship before, during and after matches.
- Ensure positive player/umpire relationships are continually developed.

COACHES CODE OF CONDUCT

It is imperative that coaches understand and adhere to **BYLAW #1 'The Spirit of Junior Football'**.

As a coach, I understand that as an integral component of my accreditation, I must maintain a standard of behaviour and conduct in the best interests of the game and the players/staff in my care.

In representing myself in an honest manner, and without bringing the coaching profession or the Game into disrepute, I will endeavour to uphold the following to the best of my ability:

1. I will respect the rights, dignity and worth of all individuals within the context of my involvement in Australian Football, including refraining from any discriminatory practices on the basis of race, religion, ethnic background, or special ability/disability.
2. I will abide by and teach the AFL Laws of the Game and the Rules of my Club, District and League/ Association.
3. I will be reasonable in the demands I make on the time commitments of the players in my care, having due consideration for their health and well-being.
4. I will be supportive at all times and I will refrain from any form of personal abuse or unnecessary physical contact with the players in my care.
5. I will have due consideration for varying maturity and ability levels of my players when designing practice schedule, practice activities and involvement in competition.
6. I will avoid overplaying the talented players aiming to maximise participation and enjoyment for all players regardless of ability. Where I am responsible for players in the 5-18 year old age group, I will strive to ensure that all players gain equal playing time.
7. I will stress and monitor safety always.
8. In recognising the significance of injury and sickness, I will seek and follow the physician's advice concerning the return of injured or ill players to training.
9. I will endeavour to keep informed regarding sound principles of coaching and skill development, and of factors relating to the welfare of my players.
10. I will at all times display and teach appropriate sporting behaviour, ensuring that players understand and practise fair play.
11. I will display and foster respect for umpires, opponents, coaches, administrators, other officials, parents and spectators.
12. I will ensure that players are involved in a positive environment where skill learning and development are priorities and are not overshadowed by a desire to win.
13. I reject the use of performance enhancing substances in sport and will abide by the guidelines set forth in the AFL Drug Policy.

Note: This "Coaches Code of Conduct" is to be signed and conformed to as part of the accreditation requirements of the AFL. Coaches should be aware that, in addition to this Code, they may be obliged to sign a further Code of Conduct/Ethnics with their Club and/or League or State Sports Association (WAFC).

PARENT'S & SPECTATOR'S CODE OF CONDUCT

- Understand and adhere to **BYLAW #1 'The Spirit of Junior Football'**.
- Encourage children to participate, if they are interested.
- Encourage children to always participate according to the rules.
- Never ridicule or yell at a child for making a mistake or losing a game.
- Remember that children learn best from example. Applaud good plays by all teams.
- If you disagree with an official, raise the issue through the appropriate channels rather than questioning the official's judgment and honesty in public.
- Support all efforts to remove verbal and physical abuse from sporting activities.
- Recognize the value and importance of volunteer coaches, managers and helpers

- Remember that children play organized sports for fun. They are not playing for the entertainment of spectators only, nor are they miniature professionals.
- Condemn the use of violence in any form, be it by spectators, coaches, officials or players.
- Encourage players to follow the rules and the umpire's decisions.
- Demonstrate appropriate social behaviour by not using foul language, harassing players, coaches, umpires or volunteers.

PLAYER'S CODE OF CONDUCT

- Understand and adhere to **BYLAW #1 'The Spirit of Junior Football'**.
- Play by the rules.
- Never argue with an umpire or an official. If you disagree, discuss the matter with your coach or teacher after the game.
- Control your temper. Verbal abuse of officials or other players, or provoking an opponent is not acceptable.
- Work equally hard for yourself and for your team. Your team's performance will benefit so will you.
- Be a good sport. Applaud all good plays whether they are by your team, opponent or the other team.
- Treat all players as you would like to be treated. Do not interfere with, bully or take unfair advantage of another player.
- Cooperate with your coach, team mates and opponents. Without them there would no competition.
- Play for the "fun of it" and not just to please parents and coaches.
- Avoid using derogatory language.
- Be prepared to take responsibility for your actions.

RUNNER'S/WATER STEWARDS CODE OF CONDUCT

- Understand and adhere to **BYLAW #1 'The Spirit of Junior Football'**.
- The runner **SHOULD BE AN ADULT**.
- The runner must be clearly identified.
- The runner's name must be entered in both team books.
- No abusive language or swearing.
- Support the decision of the umpires at all times and never question decisions.

UMPIRE'S CODE OF CONDUCT

- Understand and adhere to **BYLAW #1 'The Spirit of Junior Football'**.
- Modify rules and regulations to match the skill level of children and their needs.
- Compliment all participants on their efforts.
- Be consistent, objective and courteous in calling all infractions.
- Condemn unsporting behaviour and promote respect for all opponents.
- Ensure that the "spirit of the game" for children is not lost by using common sense and not over emphasizing errors.
- Publicly encourage rule changes which will reinforce the principles of participation for fun and enjoyment.
- Ensure that your behaviour is consistent with the principles of good sporting behaviour. Actions speak louder than words.
- Make a personal commitment to keep yourself informed of sound officiating principles and the principles of growth and development of children.
- Avoid use of derogatory language based on gender.

COACHING

The coach has significantly more influence upon players than any other official person connected with football. It is critical that they are professionally educated in the best techniques and instilled with correct principles.

All persons placed in charge of junior footballers must have successfully completed an age appropriate AFL approved coaching course or be working towards completing the course by June 30 of the current season. If not, **they are not permitted to coach in Western Australia.**

Please also note the relevant Global By-Law that applies to coaching.

COACH ACCREDITATION

LEVEL I

The Level One Course is designed to give coaches at club level a basic understanding of coaching methods.

- A large part of the course is concerned with skill teaching, practical drills and the role of the coach.
- The course is conducted in NAB AFL Auskick (Years PP-3), Junior Football (Year 4-7), Youth (Year 8-12) or seniors (18+) playing groupings.

Competency Based Assessments

- At the conclusion of this Course, the coach will be able to plan, prepare and conduct a training session in a safe and appropriate environment.

Should you require any information regarding this course contact your District Operations Manager or Development Officer.

LEVEL II

This course is designed to give the committed coach a broad background in the sports sciences and a higher level of knowledge in football coaching.

- The course will introduce the coach to the latest trends and developments in coaching.
- You need to have at least 2 years' experience as a Youth or Senior coach before applying.

Any enquiries can be directed to your Regional or District WAFC staff member.

LEVEL III

This is the highest qualification currently available to football coaches.

Level Three coaches must have extensive coaching experience and a high standard of knowledge in the sport at Youth or Senior level with priority given to State, WAFL and AFL level coaches.

Enquiries can be directed to the Manager Coaching Kane Benson on (08) 9381 5599.

REACCREDITATION / UPDATING

Coaches are required to maintain behaviours in accordance with the code of conduct at all times and to keep up to date with recent developments in coaching. Accreditation automatically expires after four years.

The WAFC endeavours to notify all expiring coaches via email and provide links to the re-accreditation forms. Reaccreditations are not automatically given and the District/ Regional WAFC staff member along with the WAFC Manager Coaching will determine if the candidate is suitable for reaccreditation. Eligibility for reaccreditation relies on current coaching experience, ongoing coach education and behaviour history of the applicant.

AUSTRALIAN FOOTBALL COACHES ASSOCIATION (AFCA)

Coordinated by WAFC Community Team, the AFCA Coach Education process is a series of seminars which utilize a range of presenters to deliver interactive and informative coach education sessions. These sessions are again communicated to district coaches via their Development Officers, and through the Coaches Edge newsletter.

AFCA hosts an Excellence in Coaching Awards Event to present each football coach who have shown excellence and measurable achievements through quality coaching techniques over the past season(s).

From these nominations the “JJ Leonard Medal” for Coach of the Year, “Ken Armstrong Community Coach” of the Year and the “Greg Brehaut Memorial Scholarship” will be selected. These awards are presented in recognition of three stalwarts of our national game in Western Australia.

This year “Coach of the Year” awards will also be awarded in the following categories;

- Auskick,
- Modified Rules,
- Youth,
- Senior Community
- Female.

All nominations/applications must be submitted through the appropriate nomination form.

COACH EDUCATION IN YOUR DISTRICT

Whilst the accreditation aspect of being a coach in our great game is an integral component of coach education, there are other ongoing opportunities for aspiring coaches to develop their understanding of our game.

By making contact with their respective District Development staff, coaches will be able to tap into a range of coach seminars, coach mentoring and other coach development opportunities that will enhance their coaching knowledge.

REPORTS

The following personnel have the power to report any player or official for any breach of the laws of the game, codes of conduct, member protection policies or of the rules or By-laws of the **Secondary Schools Football Advisory Committee**.

- (a) Field Umpire
- (b) Umpires’ Coach whilst in an observing capacity
- (c) Boundary umpires if officially appointed by the **Secondary Schools Football Advisory Committee**
- (d) Goal umpires if officially appointed by the **Secondary Schools Football Advisory Committee**
- (e) Stewards if officially appointed by the **Secondary Schools Football Advisory Committee**
- (f) Any member of the **Secondary Schools Football Advisory Committee**
- (g) WAFC General Manager Community Football, WAFC Participation Manager, WAFC Manager Programs, WAFC Manager Schools & Junior Competitions or designated WAFC staff

Any player or official, who is to be reported, must be advised of such report prior to the commencement of the next quarter of the game, unless the offence occurs in the final quarter in which case advice to the Team Manager when passing on the official report sheet will suffice.

REPORTED PLAYERS

A player against whom any charge has been proved at a hearing of the P&D Board or received a prescribed penalty during the current season, or any player who has received an automatic suspension (ONE WEEK) as a result of having been sent from the ground three (3) times during the season, shall be disqualified from participation in the voting for any Fairest and Best award.

Any player or official suspended by either a tribunal or prescribed penalty will not be permitted to play, coach or participate in any capacity, in any affiliated district competition including schools, senior metropolitan community football or regional football, for the duration of the penalty. The reverse also applies.

THE "YELLOW" CARDS

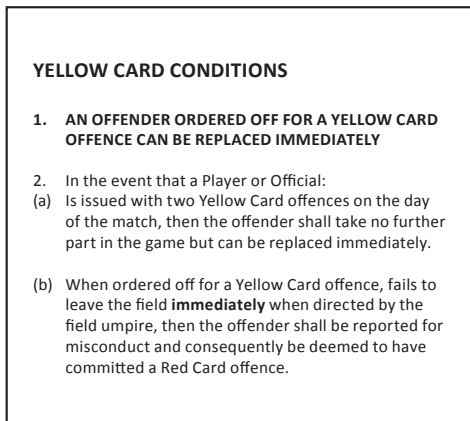


FRONT OF YELLOW CARD

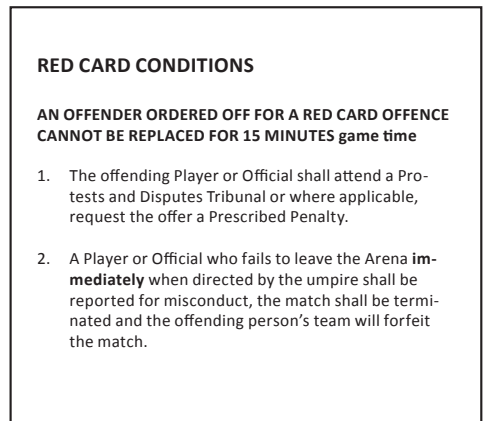
THE "RED" CARDS



FRONT OF RED CARD



BACK OF YELLOW CARD



BACK OF RED CARD

Step One: The Report

Should any player be reported, the umpire will provide a thorough description of the offence on the Match Report. In order for the matter to be dealt with quickly, he/she must take the following steps **immediately following the game**:

1. Notify the coach of the offending player that the report has been made against.
2. Outline the offence the player has been charged with.
3. Notify the opposing coach if a player on his team was involved in the incident and may be required to attend a tribunal hearing.
4. Notify the Umpire's Coordinator of the report that evening.

From here, it is the coach's responsibility to:

- a. Outline the player's options with regard to a penalty:
 - Accept a prescribed penalty
 - Proceed with a tribunal hearing
- b. Contact the Region Coordinator prior to 12pm the following day to notify them as to the player's decided option.
- c. If an opposing player has been offended against, his coach must too, contact the Region Coordinator by 12pm the following day to find out if the player is required at a tribunal hearing.
- d. Notify the Umpire's Coordinator that evening of the report.

Step Two: Player's Decision

Once being notified that a report has been lodged, the player has until the following morning to notify his coach of the decision he has made regarding the penalty. His options are to:

- a. Accept the umpire's decision and take a prescribed penalty, hence eliminating the need for an actual hearing.
- b. Dispute the umpire's decision and choose to have the case heard by the P & D Panel on the Thursday evening, or an evening arranged by the Schools Competitions Manager.
In either case, the player must have confirmation from a parent/guardian and/or School Principal/HOLA that the decided course of action meets with their approval.

From this point on, the following shall occur:

DECISION: PRESCRIBED PENALTY

If the player chooses this course of action, the following must occur:

1. The player notifies the coach of his decision prior to school the following day. A standard "Confirmation of Report Form" must be completed by the player and a parent/guardian and/or School Principal/HOLA and returned to school the following day.
2. The coach contacts the Region Coordinator and informs him of the player's decision. Prior to 9.30am a copy of the Confirmation of Report Form is faxed to the Regional Coordinator.
3. The Region Coordinator contacts the Schools Competitions Manager and informs him of the decision. The Schools Competitions Manager will notify any relevant community/school sporting bodies affected by the suspension.

DECISION: DISPUTE THE CHARGE

If the player chooses this course of action, the following must occur:

1. The player must notify his coach of his decision prior to school the following day.
2. The coach must notify the Region Coordinator (prior to 9.30am), that a tribunal hearing needs to be convened.
3. The Regional Coordinator then notifies the Schools Competitions Manager to arrange tribunal proceedings.

NOTE: The coach is responsible for arranging advocacy for a player should that player choose to dispute the charge.

ARRANGING THE HEARING

To ensure that the case in question is resolved as quickly as possible, the following procedure should be observed by the Manager School & Junior Competitions.

1. Arrange the case to be heard at the offices of the WAFC (Domain Stadium). The case should be heard as soon as possible following the date of the charge.
2. Arrange for a panel of three delegates to attend the hearing. These should consist of:
Chairman, Secondary School Football Advisory Committee
Community Football Council or WAFC representative
School Sport WA representative
If one of these parties is unavailable then a representative of the SSFAC shall be the substitute.
3. Contact the teacher/coach of the player charged and informs them of the time and location of the hearing.
4. Contact the teacher/coach of the player infringed against (if required), and informs them of the time/location of the hearing.
5. Contact the Umpire Coordinator with the above-mentioned details and request he arrange for the charging umpire to attend the hearing.

MISCONDUCT

- The Coach is the key to a team's behaviour both on and off the field. All coaches are required to attend a coaches meeting with the Region Coordinator.
- Coaches who deliberately break the 'Codes of Behaviour' will be asked to step down.
- The send off rule will be applied in all games.
- Red and Yellow Cards will be used as in line with WAFC standard Order Off Rule. That is:
- Any Player or Official receiving a Red Card is automatically reported and shall take no further part in any match conducted on the day the offender was reported and is required to attend a Protests and Disputes Tribunal or where applicable, request the offer of the prescribed penalty.
- If a team's conduct is deemed by the umpires as not upholding the Codes of Conduct for the competition, behaviour points may be withheld.
- An independent Tribunal consisting of representatives as listed in point 2 above will hear any major serious charges.

ANY PLAYER OR OFFICIAL SUSPENDED BY EITHER A TRIBUNAL OR PRESCRIBED PENALTY WILL NOT BE PERMITTED TO PLAY, COACH OR PARTICIPATE IN ANY CAPACITY, IN ANY AFFILIATED DISTRICT COMPETITION INCLUDING SCHOOLS, SENIOR METROPOLITAN, JUNIOR COMMUNITY FOOTBALL OR REGIONAL FOOTBALL, FOR THE DURATION OF THE PENALTY.

STANDARD RANGE OF PENALTIES FOR REPORTABLE OFFENCES:

* The WAFC Manager Community Development will adjudicate on any anomalies, inconsistencies or interpretive issues that arise in relation to the range of penalties. Any request for rulings will be initiated by the District Competition Director in writing to the WAFC Manager Community Development.

The *Standard Range of Penalties* shall apply to any Player or Official found guilty of a Specific Reportable Offence listed in Law 19.2.2 of the Laws of Australian Football or as described in the Rules and Regulations of the Controlling Body.

Where an Offender commits two (2) or more offences within the current 2 year period, then the “Second Offence” Range of Penalties shall be used to determine the penalty.

The “Second Offence” Range of Penalties have been set at double the “First Offence” Range of Penalties to clearly signify that repeat offenders will not be tolerated.

In determining an Offender’s penalty, the Tribunal shall use the *Standard Range of Penalties* and may increase the penalty after taking into consideration any injury sustained by a victim and/or any previous convictions of the offender prior to the last 2 years of the Tribunal sitting. The use of Suspended Sentences may be used as an additional penalty to the *Standard Range of Penalties*.

The Tribunal shall **not reduce** the minimum *Standard Range Penalties*, unless mitigating circumstances are established at the hearing. If mitigating circumstances are established, The Tribunal Chairman shall state and record the circumstances on the *Standard Disciplinary Record of Tribunal Proceedings* form.

THE STANDARD RANGE OF PENALTIES

(RELATING TO SPECIFIC REPORTABLE OFFENCES UNDER LAW 19.2.2)

(a) Making contact with an umpire;

1st Offence: Range: 4 weeks to 2 years

negligent 4-10 weeks, reckless 10 weeks- 1 year, intentional 1 -2 years

2nd Offence: Range 8 weeks to 4 years

negligent 8-20 weeks, reckless 20 weeks- 2 years, intentional 2 -4 years

Striking an Umpire;

1st Offence: Range: 2 years to Life

Negligent 2-4 years, reckless 4-10 years, intentional 10 years – Life

2nd Offence: Range: 4 years to Life

Negligent 4-8 years, reckless 8-20 years, intentional 20 years – Life

(b) Attempting to make contact with an Umpire;

1st Offence: Range: 2 weeks to 1 year

Negligent 2-5 weeks, reckless 5-10 weeks, intentional 10 weeks - 1 year.

2nd Offence: Range: 4 weeks to 2 years

Negligent 4-10 weeks, reckless 10 weeks – 1 year, intentional 1-2 years

Attempting to strike an Umpire;

1st Offence: Range: 1 year to 10 years

Negligent 1-2 years, reckless 2-5 years, intentional 5-10 years

2nd Offence: Range: 2 years to Life

Negligent 2-4 years, reckless 4-10 years, intentional 10 years -Life

(c) Using abusive, insulting, threatening or obscene language towards or in relation to an Umpire;

1st Offence: abusive/obscene 2-4 weeks, insulting/threatening 4-10 weeks

2nd Offence: abusive/obscene 4-8 weeks, insulting/threatening 8-20 weeks

(d) Behaving in an abusive, insulting, threatening or obscene manner towards or in relation to an Umpire;

1st Offence: abusive/obscene 2-4 weeks, insulting/threatening 4-10 weeks

2nd Offence: abusive/obscene 4-8 weeks, insulting/threatening 8-20 weeks

(e) Disputing a decision of an Umpire; (Prescribed Penalty offer – 1 week)

1st Offence: Yellow Card by Umpire – Cool Off for 15 minutes

2nd Offence: 1 week

(f) Use of an Obscene gesture; (Prescribed Penalty offer – 1 week)

1st Offence: 1-2 weeks

2nd Offence: 2-4 weeks.

(g) Intentionally, recklessly or negligently:-

(i) Kicking another person;

1st Offence: Range: 2-10 weeks

negligent 2 weeks, reckless 3-6 weeks, intentional 6-10 weeks

2nd Offence: Range: 4-20 weeks

negligent 4 weeks, reckless 6-12 weeks, intentional 12-20 weeks

(ii) Striking another person;

1st Offence: Range: 2-10 weeks

negligent 2 weeks, reckless 3-6 weeks, intentional 6-10 weeks

2nd Offence: Range: 4-20 weeks

negligent 4 weeks, reckless 6-12 weeks, intentional 12-20 weeks

(iii) Tripping another person whether by hand, arm, foot or leg;

1st Offence: Range: 2-10 weeks

negligent 2 weeks, reckless 2-4 weeks, intentional 4-10 weeks

2nd Offence: Range: 4-20 weeks

negligent 4 weeks, reckless 4-8 weeks, intentional 8-20 weeks

- (iv) **Engaging in Time Wasting; (Prescribed Penalty offer – 1 week)**
1st Offence: Yellow Card by Umpire – Cool Off for 15 minutes
2nd Offence: 1 week
- (v) **Charging another person; (refer to law 15.4.4)**
1st Offence: Range: 2-10 weeks
negligent 2 weeks, reckless 3-6 weeks, intentional 6-10 weeks

2nd Offence: Range: 4-20 weeks
negligent 4 weeks, reckless 6-12 weeks, intentional 12-20 weeks
- (vi) **Throwing or pushing another player after that player has taken a Mark, disposed of the football or after the football is otherwise out of play; (Prescribed Penalty offer – 1 week)**
1st Offence: Yellow Card by Umpire – Cool Off for 15 minutes
2nd Offence: 1 week
- (vii) **Engaging in rough play against an opponent which in the circumstances is unreasonable;**
Examples such as but not limited to: Using hands to claw, gouge or scratch an opponent in the region of the head, including the face, mouth, eyes, nose, and ears; Spear Tackles, Head Butting, Biting, Elbowing, Kneeing, Choking, Head Locking, Swinging an arm to the head region (“Coat Hanger”), Making unreasonable contact to an opponent who is marking or attempting to mark the football.

1st Offence: Range: 2-10 weeks
negligent 2 weeks, reckless 3-6 weeks, intentional 6-10 weeks

2nd Offence: Range: 4-20 weeks
negligent 4 weeks, reckless 6-12 weeks, intentional 12-20 weeks
- (viii) **Engaging in a melee, except where a player’s sole intention is to remove a teammate from the incident; (Prescribed Penalty offer – 1 week)**
1st Offence: Yellow Card by Umpire – Cool Off for 15 minutes
2nd Offence: 1 week
- (ix) **Kicking or otherwise causing the football to hit any part of a stadium roof’s structure;**
Not applicable in Western Australia
1st Offence: 1 week or a Fine equivalent to a match payment
2nd Offence: 2 weeks or a Fine equivalent to 2 match payments
- (x) **Spitting at or on another person;**
1st Offence: Range: 2-4 weeks
negligent 2 weeks, reckless 2-3 weeks, intentional 3-4 weeks

2nd Offence: Range: 4-8 weeks
negligent 4 weeks, reckless 4-6 weeks, intentional 6-8 weeks

- (h) **Attempting to kick another person; (Prescribed Penalty offer – 1 week)**
1st Offence: Range: 1-5 weeks
negligent 1 week, reckless 1-2 weeks, intentional 2-5 weeks
- 2nd Offence: Range: 2-10 weeks*
negligent 2 weeks, reckless 2-4 weeks, intentional 4-10 weeks
- (i) **Attempting to strike another person; (Prescribed Penalty offer – 1 week)**
1st Offence: Range: 1-5 weeks
negligent 1 week, reckless 1-2 weeks, intentional 2-5 weeks
- 2nd Offence: Range: 2-10 weeks*
negligent 2 weeks, reckless 2-4 weeks, intentional 4-10 weeks
- (j) **Attempting to trip another person whether by hand, arm, foot or leg; (Prescribed Penalty offer – 1 week)**
1st Offence: Range: 1-5 weeks
negligent 1 week, reckless 1-2 weeks, intentional 2-5 weeks
- 2nd Offence: Range: 2-10 weeks*
negligent 2 weeks, reckless 2-4 weeks, intentional 4-10 weeks
- (k) **Intentionally shaking a goal or behind post when another player is preparing to Kick or is Kicking for Goal or after the Player has Kicked a Goal and the ball is in transit; (Prescribed Penalty offer – 1 week)**
1st Offence: 1 week
2nd Offence: 2 weeks
- (l) **Wrestling another person; (Prescribed Penalty offer – 1 week)**
1st Offence: Yellow Card by Umpire – Cool Off for 15 minutes
2nd Offence: 1 week
- (m) **Using abusive, insulting, threatening or obscene language; (Prescribed Penalty offer – 1 week)**
1st Offence: abusive/obscene 1-2 weeks, insulting/threatening 2-5 weeks
2nd Offence: abusive/obscene 2-4 weeks, insulting/threatening 4-10 weeks
- (n) **Failing to leave the playing surface when directed to do so by a field umpire; (Prescribed Penalty offer – 2 weeks)**
1st Offence: 2 weeks
2nd Offence: 4 weeks
- (o) **Wearing boots, jewellery or equipment prohibited under Law 9; (Prescribed Penalty offer – 1 week)**
1st Offence: Yellow Card by Umpire – Cool Off for 15 minutes
2nd Offence: 1 week

(q) Any act of misconduct. (Prescribed Penalty offer – 2 weeks)

Examples such as but not limited to: Indecent Exposure, Biting, Instigating a Melee, Failing to follow the Direction of a Field Umpire or any Behaviour Detrimental to Football.

1st Offence: 2-4 weeks

2nd Offence: 4-8 weeks

or Law 20.2(f) below – misconduct of a serious nature

(RELATING TO THE SPECIFIC REPORTABLE OFFENCE UNDER THE ORDER OFF LAW 20.2)

20.2(f) An act of misconduct if the Umpire is of the opinion that the act constituting misconduct is serious in nature;

1st Offence: 3-6 weeks

2nd Offence: 6-12 weeks

Examples such as but not limited to **serious** acts of misconduct: Indecent Exposure, Biting, Instigating a Melee, Failing to follow the Direction of a Field Umpire or any Behaviour Detrimental to Football.

INVESTIGATION PROCEDURES / COMPLAINTS & APPEALS

Any school may refer a protest or charge, or report any infringement of the rules of the Laws of Australian Rules Football against any other school, player or official. School generated complaints may be lodged with the **SSFAC** within 48 hours of an alleged incident, on an official school letterhead signed by the school Principal and/or HOLA making the complaint on behalf of his school.

The **SSFAC** will determine whether an INVESTIGATIONS Panel, Appeals Committee or P & D tribunal will be convened to deal with any complaints that may not fit within normal disputes processes. All complaints will be dealt with in a time frame suitable to the **SSFAC**.

The **SSFAC** may request either written or in person accounts relevant to the investigation from either of the schools involved in the protest, charge or report. Both schools shall be given at least 24 hours notice to attend either an in person interview, tribunal or both.

Any school may appeal in writing against any imposed penalty by P & D Tribunal within forty eight (48) hours of receiving notification of this penalty. The **SSFAC** shall consider any such appeal, which must be accompanied by new evidence.

The decision of the **SSFAC** in regard to any appeal shall be **final** and in the event of a failed appeal. The **SSFAC** may ask for the matter to be referred to the WAFDC for further consideration and a final determination.

The **SSFAC Chairman** reserves the right to accept or refuse the lodgement of any other complaint outside of the usual processes.

PROTESTS & DISPUTES TRIBUNAL

A Protests & Disputes Tribunal will be convened by the **SSFAC**. Schools may appeal to the **SSFAC** against the severity of tribunal penalties in writing, accompanied by new evidence within forty eight (48) hours of receiving notification of the original penalty.

SCHOOL AND COMMUNITY FOOTBALL

The WAFC sees the delivery of Australian Football as a partnership between schools and community groups.

Schools recognise that sport is an aspect of the school curriculum and is an integral part of an individual's development.

Community groups recognise the school system as an integral and positive part of football development and assist and encourage participation.

Schools and community groups/clubs should establish links to promote continuity of delivery. AFL School Ambassadors will be appointed in every school to facilitate the effective implementation of school football programs.

The use of existing school facilities by community groups is encouraged.

Schools should be receptive to interaction with community groups within and outside of school hours.

The WAFC works closely with key advisory groups;

- Education Advisory Group
- Primary School Football Advisory Committee
- Secondary School Football Advisory Committee

In designing and implementing quality football education programs.

The Education Advisory Group's foundation strategy is the induction of 1000 teachers to act as AFL School Ambassadors who will work actively in their school and cooperatively with community clubs to increase interest and participation in football.

PRIMARY SCHOOL AGE FOOTBALL

- The NAB AFL Auskick approach of modified involvement shall be adhered to from 5 to 11 years of age.
- Organisers, coaches and assistant coaches shall enter the AFL Coach Accreditation Scheme.
- Interschool competition, in the form of weekly games (Eagles Cup – Boys Competition), Fremantle Dockers Cup (Girls Competition) and one day Lightning Carnivals (Fremantle Dockers Shield) for years 6 and 7 conducted in the second and third terms of the school calendar year. Intra school competition (Eagles Faction Football) can be played all year round. (Freo Footy Skills) for years 4-6 conducted in term 2 is a health and Physical education based skill learning program.
- Competition organised and administered by the WAFC under guidance of Primary School Football Advisory Council.
- Designed to target students who play other sports at weekends or no sport at all.
- Encouragement is given to those introduced to football at school to register for community club football.
- A 'special points' criterion is used to encourage participation and discipline and not focus solely on winning.

PUBLIC STATEMENT

Public statements can only be made by the designated **WAFC spokesperson**.

TALENT

Providing a clear pathway to the top in a sport with limited international opportunity is vital to ensure the talented “natural” athlete selects Australian Football at an early age.

The steps from junior mass participation to zone representation/opportunities at the Year 8 level, leading to functional talent identification at intrastate and interstate competition from 15-18 are clearly defined.

The pinnacle opportunity” could perhaps be changed to the primary opportunity for a junior Australian footballer for both optimal performance and identification is the National

Championships conducted annually for players competing in the State Schoolboys program (15 Year olds) and the WAFC & AFL endorsed 16’s and 18’s State academy programs .

The pathway leads from junior level to senior football via Country or State Leagues with the AFL as the clear destination for those wishing to achieve the ultimate. Players wishing to pursue an AFL career in WA must do so via the WAFL.

Following is the career pathway for talented players;

Key Points

- Enter or leave pathway at the any level before being drafted by AFL,
- Inclusion In development squads give no guarantees, but an excellent opportunity to enhance football education,
- Level of training and play paramount,
- Plan and organise according to goals you have set,
- Understand there must be a balance - family, school/work, friends and sport,
- Seek advice - parents, teachers and coaches, WAFL Club Talent Managers.

State Representation Policy

The talent pathway is quite clearly defined for our youth in Western Australia.

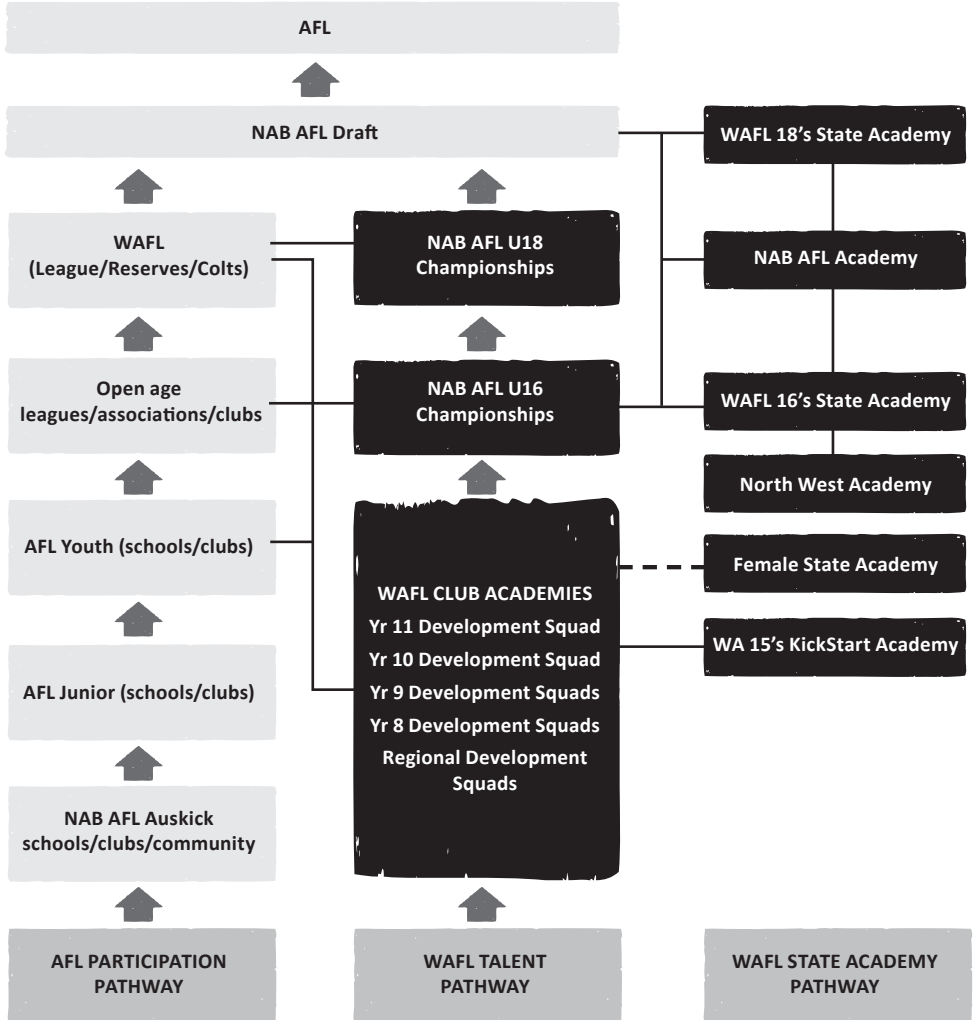
For our most talented young players, the opportunity to represent their state is an exciting and prestigious time in their development.

It should be noted that trials and practice matches are scheduled with community / country fixtures in mind and it is only on rare occasions that a clash results.

In reference to the official championship matches and State Academy Trial Matches, State representatives should be credited with local home and away games (i.e. two games) for the age group they were playing in prior to WA 16’s and State Schoolboys selection, in a similar fashion to the situation involving the WAFL and AFL clubs.

If you have any queries contact State Talent Manager Adam Jones or Talent Programs Coordinator Clayton Anderson at the WAFC on (08) 9381 5599.

WAFL PLAYER DEVELOPMENT PATHWAY



WAFC STATE CHAMPIONSHIPS

The WAFC State Championships provides an opportunity for the Premiership Year 12 community football team from each of the three conferences to play against each other in a carnival format to determine the WAFC State Champion Team. It is a fun and evolving competition that will continue to improve and grow in stature on the community football calendar.

Season	WAFC State Champions	District
2014	Mt Lawley Inglewood JFC	East Perth District
2015	Mazenod JFC	Swans District
2016	Joondalup-Kinross JFC	West Perth

FEMALE FOOTBALL

Did you know that in 2016 there were over 70,000 female participants in WA? Let's increase this number and get all your friends involved!

#FollowOurDream @FemaleFootyWA

Unsure of which District you live in? Head to www.playaflwa.com.au to find your closest club!

The pathway for a player, coach, umpire and administrator continues to evolve due to the dedication of volunteers, visionary clubs and development staff.

PARTICIPATION PATHWAY

NAB AFL Auskick

Girls have the ability to play Auskick between 5-8 years. To better cater for female participants clubs are encouraged to either set up an All Girls Auskick group within their centre that runs parallel to mixed gender Auskick or a standalone All Girls Auskick Centre inclusive for girls. For more information on All Girls Auskick Centres contact your District Staff.

Junior Girls

The Junior Girls Competition is for girls (Y4-Y6). In 2016 we had 70 junior girls' teams across Metro WA, with some Districts hosting standalone competitions. Junior Girls is a crucial step in the pathway assisting with the transition from Auskick and then to continue into Youth Girls Football.

Contact your District staff for more information on these competitions.

Youth Girls

WAFC Mundella Rogers Cup Year 10-12 Competition was launched in 2013 with 8 teams that quickly grew to 9 team competition that now features a team from every District. These include; Claremont Piranhas, East Fremantle, South Fremantle, Swan Districts, Peel Thunderbirds, Perth Angels, East Perth, Joondalup Falcons and the Coastal Titans.



This Competition was created to bridge the gap between Junior Football and Senior football for girls aged 13 - 17 years of age providing a complete pathway for girls to play.

Senior Women's

West Australian Women's Football League is for women aged 17 and above, the final step in the Female Participation Pathway. There are 9 Clubs with 15 teams across two divisions. These include; Claremont Piranhas, East Fremantle Sharks, South Fremantle Bulldogs, Peel Thunderbirds, Swan Districts, Coastal Titans, Perth Angels, East Perth and Joondalup Falcons.

For more information on how to register please visit <http://www.wawfl.com.au> and if you are unsure on your closest club visit www.playaflwa.com.au

For those players aspiring to play football at the elite level through the talent pathway we encourage them to be playing football on a regular basis through our community club competitions. It is a great way to make new friends, have fun and try something different.



FEMALE TALENT PATHWAY

The WA Female State program is an elite football environment that focuses on individual player development. The program also focuses on the development of a pathway for coaches to coach at an elite level and an opportunity to be mentored by more experienced coaches.

State 15 Schoolgirls

This program is designed for those talented players aged between 13yrs and up to 15yrs of age. Players indicate their interest in the team by attending the selection trials as listed on the SSWA website.

State U18 Youth Girls

This program caters for those girls aged between 16yrs and up to 18 yrs of age on the year of competition. This competition is usually played in May, with initial selections occurring in mid January each year. Players indicate their interest in the team by attending the selection trials.

State U23 Women

This is a new program initiated in 2016 to allow younger players not selected for AFL teams to experience high quality state games. Players must be aged 19 – 23yrs on the year of the competition. Selectors choose 24 players. In late June 2016 WA has arranged to play QLD in Brisbane, QLD. Current AFL representative players are not permitted to trial for this team.

State Open Women

This program caters for elite women aged 18+. Current AFL players and those seeking to be in an AFL team in the future who are experienced players or outstanding young players are often chosen for this team. Selectors choose 24 players.

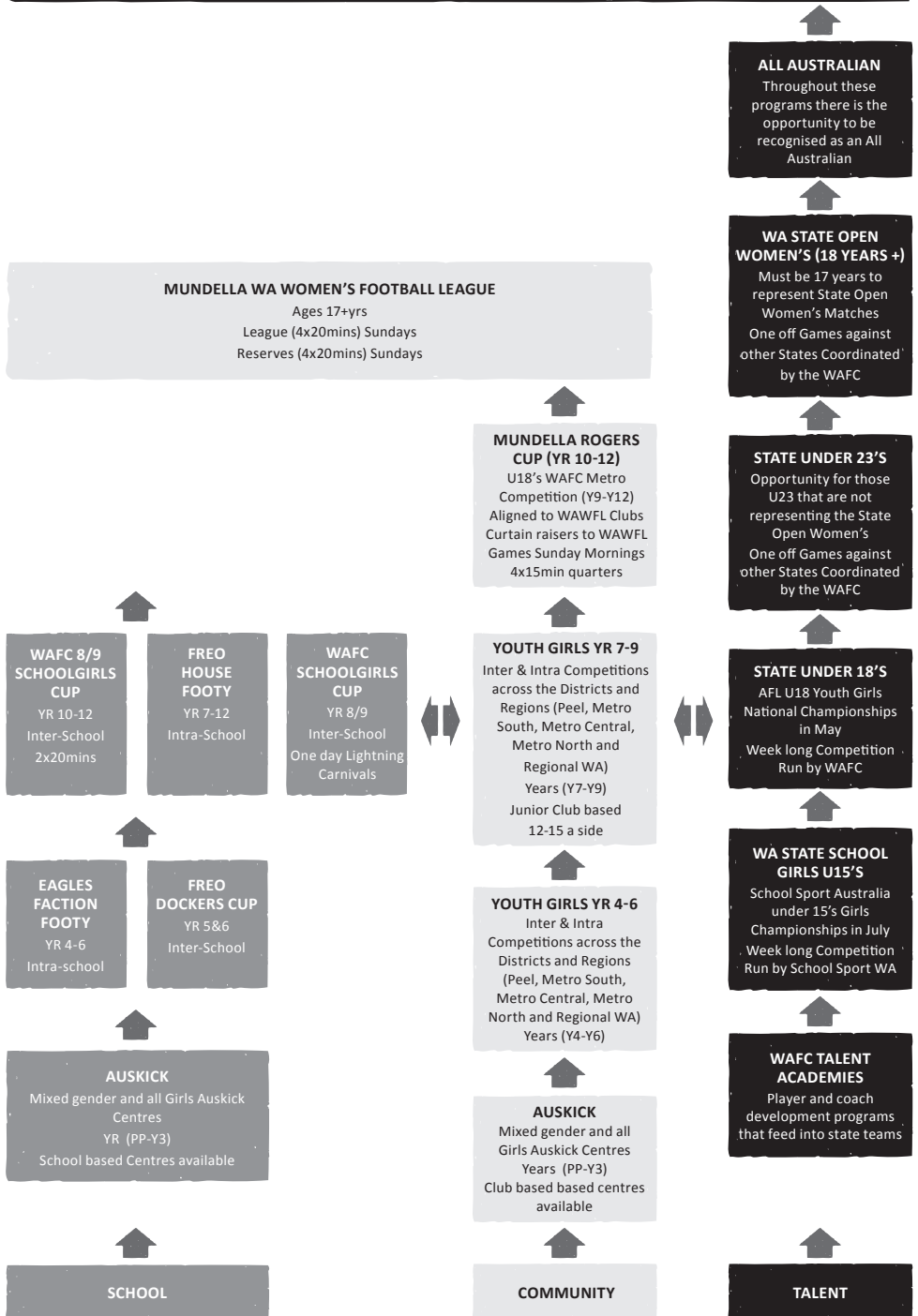
For more information on female football at any level please contact:

- Your local District Development Officer, or Regional Manager;
- WAFC Female Football Department: (08) 9381 5599
 - Female Football Coordinator – Allana Dickie adickie@wafc.com.au
 - Female High Performance Manager – Clint Degebrodt cdegebrodt@wafc.com.au



AFL FEMALE COMPETITION

The past 3 years there have been Female Exhibition Matches between Melbourne and the Western Bulldogs Curtin raiser to the AFL Matches. As of 2017 there will be a fully-fledged National Women's Competition





SPECTATOR VIEW



UMPIRE VIEW

GET IN 
THE GAME
BECOME AN UMPIRE

If you love footy, you'll love being an umpire. Not only do you get the best view of the action, you also get paid for the privilege. Keep fit, be part of a team and learn leadership skills for both on and off the field.

getinthegame.com.au

UMPIRING

To join a junior umpiring group, please log on to – www.getinthegame.com.au

For any further information, please contact your local District or the WAFC Umpire Development Manager Dean Margetts on (08) 9287 5546 or email dmargetts@wafc.com.au

Philosophy

Umpiring's core values are: Professionalism, Teamwork, Leadership and Respect.

Our Team is prepared to deliver our game plan professionally, impartially and positively to ensure the game is played within the spirit of the laws.

Trainee Umpire Vest Programme

The Trainee Umpire Vest Program aims to improve the recruitment, retention and development of learning umpires. The umpires wear a green vest to signify to players, coaches, officials and supporters that they are learning umpiring and are still gaining experience in how to umpire the game of Australian Football.

Accreditation

The AFL National Umpiring Accreditation Scheme is a competency based vehicle for ensuring that umpires attain skills and knowledge demonstrated on match day. Accreditation of Umpires gives the umpire the confidence to better perform as an official, and provides the game with more competent persons to manage the laws and safe playing of our great game.

Level One Accreditation is provided through the District Umpiring Coaching structure to its umpires. Mentors assist the process as umpires become accredited as competent through their learning on match day and in off the field activities such as recorded diary reflections.

Junior District Umpire Coaching

WAFC Umpiring invests in the 9 metropolitan WAFC Districts to cover umpire coach honoraria for the duration of the junior football season.

This honoraria payment is to ensure that the following key umpire development outcomes are attained across all of the 9 junior districts - Recruitment, In Season Training/Education, Game Day Appointments, Provide Game Day Coaching, Umpire Mentor Program, Accreditation, Uniform Distribution, Tribunal Guidance, Nominate Umpires for WAFL Talent Games, Gather Umpire District Intelligence and attend meetings as requested by DFDC.

WAFC Umpiring has in place Position Descriptions that cover all of the above whilst it also seeks to ensure that as a minimum all district umpire coach structures have the following personnel in place within each of the districts. Appointment of positions is via the DFDC and WAFC Umpiring (partnership). In season WAFC Umpiring provides each umpiring coordinator with consultative support as per the need;

1. Junior District Umpiring Coordinator
2. Open Rules Coach and Modified Rules Coach
3. Game Day Mentor / Match Day Coach's.



Growing the Quality of Our Great Game

The quality and competency of umpires adjudicating at district junior games remains one of the key essential ingredients given the pursuit of attaining and maintaining a quality game day environment. The standard and proficiency of umpiring at the junior competition level plays a fundamental role in player development and welfare whilst encouraging and promoting the value of sportsmanship.

Each “Junior District Umpire Coaching Team” remains responsible for the recruitment and educational training of their junior umpires however the challenge of umpire retention requires leadership from all junior game day stakeholders.

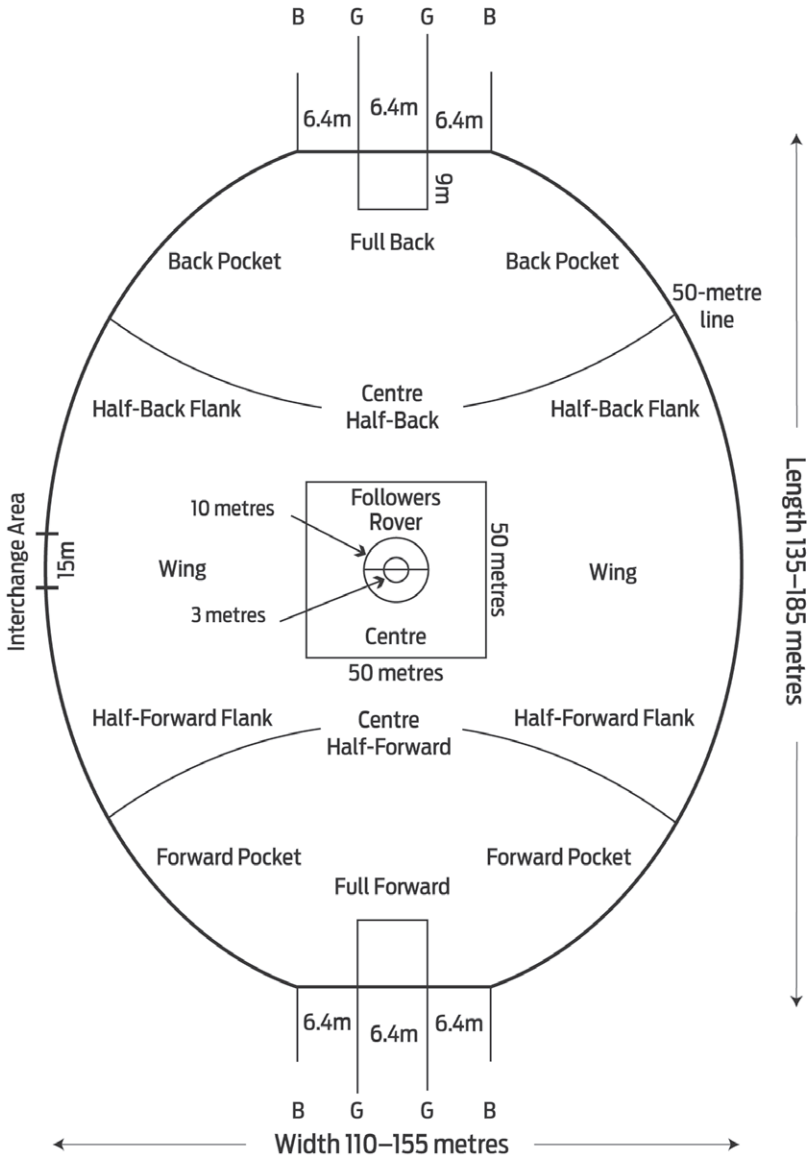
It is crucial that all appreciate the need for a “collective responsibility approach” in setting and maintaining a quality game day environment. WAFC Umpiring acknowledges the sound partnerships that have now developed across all junior districts and remains positively focused towards building even stronger links as we continue to strategically develop and enhance umpiring at the junior level of game participation.

Talent Pathway

Like players, umpires are provided with the opportunity to progress along a “TALENT PATHWAY” that starts at the District Junior Competition Level. Within the Junior Community level there remains the opportunity for young aspiring umpires to be selected to join the Hendrie/Margetts Development Squad or Geoff Hayes Development Squad (Peel Region) where additional and more specialized coaching can enhance the development process prior to them moving into the Senior Community level of game participation.

Any young umpire not selected to join Development Squad can still take up the opportunity to advance up to the Senior Community level following a request being made to the Umpire Manager, Senior competitions who will assess each individual umpire prior to acceptance.

All umpires selected into the WAFL or Mike Ball Talent Academy is via the selection process of the High Performance Umpire Manager. This process primarily looks at match day performance of the umpire at the Senior Community level together with a number of key benchmarks being attained as per the need of our state league competition WAFL. Selection into the AFL is via the WAFC Umpiring Manager endorsement, with selection criteria driven from a state and national perspective.



GOTTA LOVE #WAFOOTY



   WAFOOTBALL.COM.AU

FOR THE LOVE OF FOOTY

We love this game for many reasons.

For the bandwagon fans. The diehard fans.
The one-eyed fans. The hoodoos, voodooos and game time blues.

The WAFL players you just have to see, wanna be
and the fresh faced game changing new draftee.

Our Auskick Mums and Dads, the amateur footy lads
and the latest footy fads.

Whether you're a family man, a fanatical gran or a country footy fan
anyone can be part of the game in 2016.

