



AFL SPORTSREADY CUP 2013

SECONDARY SCHOOLS
FOOTBALL COMPETITION

CO-ORDINATED BY THE WA FOOTBALL
COMMISSION AND SCHOOL SPORT WA

F FOOTY PLUS
GROW THE GAME





DID YOU KNOW?

- Prior to 1988, only 22 government schools competed in inter-school football in the metropolitan and country regions.
- In 2012, over 4,000 students from country and metropolitan schools participated in the AFL SportsReady Cup
- Over the 25 years the competition has been running approximately 62,000 boys have participated

CONTENTS

<i>Key Dates</i>	02
<i>Champion Schools</i>	03
<i>Secondary School Football Advisory Committee</i>	03
<i>WAFC Development Staff</i>	04
<i>Foreward</i>	07
<i>AFL SportsReady Cup</i>	08
<i>Competition Format</i>	09
<i>Philosophy of the Competition</i>	11
<i>Procedures for Dealing with Racial or Religious Abuse</i>	15
<i>Officials</i>	16
<i>Codes of Conduct</i>	17
<i>Investigation Procedures</i>	27
<i>2012 Title Holders</i>	29
<i>Barry Cable Division</i>	30
<i>Glen Jakovich Division</i>	31
<i>Ross Glendinning Division</i>	33
<i>The Legends</i>	35
<i>Talent</i>	36
<i>Umpiring</i>	38

2013 AFL SPORTSREADY CUP

TERM	DAY	DATE	EVENT
1	Monday	February 4	Online Nominations Open
	Friday	March 1	Nominations Close
	Monday	March 18	Draft Fixtures
	Wednesday	March 27	Season Launch
2	Wednesday	May 8	Fixtures Commence
	Monday	July 1	SHS Country Week Championships (Walker Division)
	Friday	July 5	Walker Division Grand Final
	Wednesday	July 24	Jakovich Division Grand Final
		August 11-18	National Schoolboys Championships, NT
3	Saturday	August 3	Cable Division Grand Final (West Coast v Gold Coast)
	Tuesday	August 27	All Stars Players Announced



AFL SportsReady Cup All Stars

At the conclusion of the competition an All Star player from each school will be selected based on coach feedback from the:

- Barry Cable Division
- Glen Jakovich Division
- Ross Glendinning Division
- Bill Walker Division









CHAMPION SCHOOLS

	Cable Division	Jakovich Division	Walker Division	Glendinning Division
1988	Hamilton SHS	Eastern Hills SHS	N/A	N/A
1989	Hamilton SHS	Governor Stirling SHS	N/A	N/A
1990	Warwick SHS	La Salle College	Busselton SHS	N/A
1991	Wesley College	Willetton SHS	Albany SHS	North Lake SHS
1992	Newman College	Kent St SHS	Narrogin SHS	Thornlie SHS
1993	Newman College	Corpus Christi College	Narrogin SHS	John Curtin SHS
1994	Corpus Christi College	Mount Lawley SHS	Narrogin SHS	Cecil Andrews SHS
1995	Corpus Christi College	John XXII College	Narrogin Ag. College	CBC Fremantle
1996	Corpus Christi College	Lynwood SHS	Narrogin Ag. College	Cecil Andrews SHS
1997	Mazenod College	Lockridge SHS	Narrogin SHS	Clontarf AC
1998	Mazenod College	Rossmoyne SHS	Narrogin Ag. College	Maddington SHS
1999	Governor Stirling SHS	Hamilton SHS	Narrogin SHS	Clontarf AC
2000	Clontarf Aboriginal College	Prendiville Catholic College	Geraldton Senior College	Craigie SHS
2001	Clontarf Aboriginal College	John XXIII College	Cunderdin Ag. College	Clontarf AC
2002	Carine SHS	Clontarf Aboriginal College	Manjimup SHS	Leeming SHS
2003	Clontarf Aboriginal College	Mandurah Senior College	Manjimup SHS	Winthrop BC
2004	Clontarf Aboriginal College Mazenod College	Winthrop Baptist College	Geraldton SC	Leeming SHS
2005	Clontarf Aboriginal College	Sacred Heart College	Geraldton SC	John Forrest SHS
2006	Clontarf Aboriginal College	Willetton SHS	Mandurah SC	St Stephens Duncraig
2007	Clontarf Aboriginal College	CBC Fremantle	Newton Moore SHS	N/A
2008	Sacred Heart College	CBC Fremantle	Pinjarra SHS	N/A
2009	Mandurah Senior College	La Salle College	Mandurah Senior College	N/A
2010	Governor Stirling SHS	Carine SHS	Albany SHS	N/A
2011	CBC Fremantle	Winthrop Baptist College	Albany SHS	N/A
2012	Clontarf Aboriginal College	Mandurah Catholic College	Albany SHS	N/A

SECONDARY SCHOOL FOOTBALL ADVISORY COMMITTEE

Name	Position	Phone	Email
Alby Nuich	Chairman	0409 086 231	alby.nuich@education.wa.edu.au
Clayton Anderson	Schools Competitions Manager	0408 836 689	canderson@wafc.com.au
Peter Smith	Director of Sport: SSWA	0409 114 422	peter.r.smith@education.wa.edu.au
Region Coordinators:			
Ray Barrett	Cable Division	0412 687 585	Ray.Barrett@education.wa.edu.au
Joe Sorgiovanni	NE Jakovich	0401 887 642	jso@lasalle.wa.edu.au
Justin Burt	NW Jakovich	0407 448 614	justin.burt@education.wa.edu.au
Greg Maynard	SE Jakovich	0402 979 545	greg.maynard@education.wa.edu.au
Matt Hayes	SW Jakovich	0434 363 714	matthew.hayes@dsr.wa.gov.au
Paul Galloway	Peel Jakovich/Glendinning	0428 311 976	paul.galloway@education.wa.edu.au
TBA	NE Glendinning	9381 5599	canderson@wafc.com.au
Justin Burt	NW Glendinning	0407 448 614	justin.burt@education.wa.edu.au
TBA	SE Glendinning	9381 5599	canderson@wafc.com.au
Glen Omodei	Umpires Coordinator	0402 258 232	gomodei@wafc.com.au

METROPOLITAN DEVELOPMENT STAFF

DISTRICT	CONTACT	MOBILE	EMAIL
 Claremont	Sam Cousens	0438 838 768	sam.cousens@claremonttigers.com
 East Fremantle	Daren Bell	0438 952 487	daren.bell@effc.com.au
 East Perth	Brendan McFaull	0430 868 512	bmcfaull@eastperthfc.com.au
 Peel	Lachlan Harris	0438 677 700	districtofficer@peelthunder.com.au
 Perth	Anthony Balcombe	0412 676 857	do@perthdemons.com.au
 South Fremantle	Louise McKenry	0421 249 477	louise@sffc.com.au
 Subiaco	Matt Lamb	0430 969 906	m.lamb@subiacofc.com.au
 Swans	Chelsea Randall	0430 868 251	crandall@swandistrictsfc.com
 West Perth	Jeff Brown	0409 084 483	development@falconsfc.com.au



REGIONAL DEVELOPMENT STAFF

REGION	CONTACT	MOBILE	EMAIL
Goldfields	Gemma Harrison	0417 179 463	gharrison@wafc.com.au
Great Southern	Tom Moir	0428 428 440	tmoir@wafc.com.au
Kimberley	Michael Farmer	0407 658 698	farmer@garnduwa.com.au
Mid West	Paul Pirrottina	0429 914 220	ppirrottina@wafc.com.au
Midlands	Glen Collins	0417 920 817	gcollins@wafc.com.au
Pilbara	Nicole Graves	0417 338 300	ngraves@swandistrictsfc.com
South West	Shane Atherton	0417 980 508	satherton@wafc.com.au
Wheatbelt	Steven Boughton	0419 859 576	sboughton@wafc.com.au





The twenty sixth season of the AFL SportsReady Cup is about to begin. School Sport WA and the West Australian Football Commission have worked in close partnership for 26 years to deliver a quality competition and have continued the cooperative links between schools and the community.

The AFL SportsReady Cup offers a well organised, efficient and high quality football competition. A competition of this size requires major support. On behalf of all participants and management, I thank the WAFC and School Sport WA and new program partner AFL SportsReady for their ongoing support.

One feature of the AFL SportsReady Cup competition has been the opportunity to play the Cable Division Grand Final before an AFL fixture at Patersons Stadium. The increased demands on the time slot by various sections of the football community will see only the Cable Division Grand Final played at the 'Home of Football'.

A special thank you to school staff who have taken on the roles of coaches, managers and support staff. I would also like to thank and acknowledge Barry Cable, Glen Jakovich, Ross Glendinning and Bill Walker for their continued patronage of the AFL SportsReady Cup competition.

Finally, I wish all teams a rewarding year in the AFL SportsReady Cup competition.

Alby Nuich
CHAIR, SECONDARY SCHOOLS FOOTBALL ADVISORY COMMITTEE



AFL SPORTSREADY CUP 2013

Why have a 1st XVIII Australian Rules Football Secondary Schools Competition?

One of the major directions of the WA Football Development Trust (WAFDT) when it was established in 1987 was to re-establish Australian Rules Football into all Secondary Schools. Over the years, Australian Rules Football has provided a vehicle where values like loyalty, teamwork, respect, leadership, mateship, endeavour and integrity are taught.

The WAFC undertook a research project with Secondary Schools in both the metropolitan and country areas of our State. This research clearly identified a “desire” by the students to have a well organised and professionally run inter-school competition for the following reasons:

- Build school pride
- Play with your peers
- Enhance school / community links
- Honour to represent your school
- Commitment and Discipline

How is the competition formalised?

The AFL SportsReady Cup has a management committee:

- **Secondary School Football Advisory Committee**, which is comprised of teachers and secondary School Football stakeholders

The **Secondary School Football Advisory Committee’s (SSFAC)** charter is to promote and administer the AFL SportsReady Cup competition, its regulations, rules and format. The Committee provides a forum discussion and debate on issues relating to school football.

COMPETITION FORMAT

- There are six metropolitan regions - North West, North East, South West, South East, Peel and ACC. Each region has divisions to cater for differing sizes or strengths of schools.
- The AFL SportsReady Cup runs across 3 metropolitan divisions (Cable, Jakovich & Glendinning)
- **The SSFAC reviews all nominations and reserves the right to change the division that a school may have nominated for to achieve a balanced competition across all divisions.**
- **Country Schools – All competitions will be coordinated by your Regional Football Development Officer. Schools will be advised of their allocated carnival date by no later than Friday 5 April.**

BARRY CABLE DIVISION is for strong football schools seeking quality competition with games played across regions.

GLEN JAKOVICH DIVISION caters for schools of medium strength, seeking quality 'local' competition. Finals are played across regions.

ROSS GLENDINNING DIVISION is a 15 a side competition specifically designed for schools entering the competition for the first time or schools with a limited football background. **There are no cross regional finals in this division.**

BILL WALKER DIVISION is only for schools who participate in 'A' section at SHS Country Week.

Region Coordinators – “Teachers are in Control”

Each region will have a teacher appointed as Region Coordinator with the responsibilities to:

- arrange schools into appropriate divisions;
- set fixtures for that region;
- collate results after each round of fixtures;
- maintain a premiership table for each division;
- be a contact for all schools within that region for any queries; and
- email weekly match results to the WAFC for publication on the website;

There will also be an Umpire Coordinator to coordinate all umpire appointments.

Game Days – “The Football fraternity is aware that Wednesday is AFL SportsReady Cup day”

To enable students to maintain their studies during the important Years 11 and 12, games will be played after school on WEDNESDAYS at 4pm or as close to this time as possible. **CHANGES TO GAME TIME / MATCH DAY SHOULD BE COORDINATED BETWEEN SCHOOLS ONLY AFTER NOTIFYING BOTH THE REGION COORDINATOR AND UMPIRE COORDINATOR.**

Length of Competition

The first games will be played on **Wednesday 8 May**. The number of games will depend largely upon the number of schools in each Division. Schools are asked to check their exam timetable before nominating to ensure there are no obvious clashes between fixtures and upper school exams.

Finals

All minor finals will be completed by the end of Term 2.

- **Jakovich Division Grand Final will be played on 24 July (Venue TBC)**
- **Cable Division Grand Final will be played on Saturday 3 August prior to West Coast v Gold Coast Suns**

All schools must submit a full team list prior to the commencement of finals to their Region Coordinator.

Fixtures / Results / Ladders

Rankings for finals are determined by the following:

1. Points
2. Previous match results between teams with equal points
3. Percentage

Grounds

Games are to be played at the home schools nominated oval. Where a school has nominated a junior football club oval or council oval as its home ground, it is that schools responsibility to ensure that the ground is ready for each home game, and liaise with the respective club or council accordingly.

Ovals however must be of an adequate size. For Youth age matches the dimensions can range between 135m to 185m in length and 110m to 155m in width. **Ovals and playing arenas are to be in a safe playing condition – Goal and behind posts must be padded and cricket pitches covered. It is mandatory that the home team be responsible for goal post padding so that both goal and behind posts are covered. A game will not proceed where any posts and cricket pitches are uncovered (It is recommended the away team still brings goal post padding to games).**

Home teams are responsible for all ground markings – centre and goal squares and boundary line. Correct marking of the oval is essential. Visiting schools need to inspect the oval prior to the commencement of the game to make sure it is suitable to proceed. Any concerns should be highlighted to the Central Umpire prior to play commencing. The Central Umpire will have the final say as to whether the game will proceed. **It is recommended that all schools use the WAFC endorsed JLT match day checklist. JLT match day checklists can be obtained from Schools Competitions Manager Clayton Anderson canderson@wafc.com.au.**

Safety

Spectators are to be kept from the boundary line and goal areas. Control of spectators is the responsibility of the competing schools. **Schools must have a first aid kit including ice or ice packs, along with a stretcher at the game.** Access to mobile phone communication is mandatory. If a school has a nurse, their involvement both in training school sports trainers and/or being at the game should be encouraged.

Central Umpire/s are to check teams before each game for nails, earrings, necklaces, boots etc. Any item considered dangerous is to be removed.

Public Liability

The WAFC has arranged public Liability Insurance for a sum insured of \$20,000,000 to cover its legal liabilities. The WAFC expects each school involved in Australian Football programs to maintain public liability insurance to sufficiently cover it's legal liabilities. At its own discretion each school may want to consider purchasing personal accident insurance to protect against claims for non Medicare medical expenses arising from this Australian Football program, or any other school program.

Overseer

At each game, the overseer of all on and off field conduct will be the team coaches. The conduct of this competition relies totally upon the attitude of the coach. Coaches are to report to the WAFC on any behaviour detrimental to the Codes of Conduct of the competition. Should a SSFAC member be in attendance at a fixture, that person will act as the game overseer. The Advisory Committee members have the right to remove any player in breach of the Code of Conduct from the field of play. They may also lodge a request to investigate any incident outside of the rules of the game.

Change Rooms

Change rooms are to be allocated by the home team if available. The cleaning up of these rooms and the ground is the responsibility of both teams.

PHILOSOPHY OF THE COMPETITION

REGULATIONS

With the establishment of this Australian Rules Football Competition for Secondary Schools, it is essential that the competition maintains the highest standard of professionalism possible in all areas of the game both on and off the field.

Teams

Cable Division:	18 per team, minimum 12, maximum 7 reserves
Jakovich Division:	18 per team, minimum 12, maximum 7 reserves
Glendinning Division:	15 per team, minimum 12, maximum 7 reserves
Walker Division:	18 per team, minimum 12, maximum 7 reserves

Where schools enter two or more teams, no player may play down after three games in the higher division. Furthermore, if the higher division team has a bye, all players who played in the higher division team the previous week, are ineligible to play in the lower division team in the week of that bye.

Rules

Rules for all divisions are as per the Laws of Australian Football.

Uniforms

All teams are to be in uniform playing gear including:

- Numbered school jumpers
- Uniform football shorts
- Correct socks

TRAVEL ASSISTANCE

To assist with travel costs incurred by schools, a figure of \$5,000 will be available for disbursement at the conclusion of the competition, based on the total distance traveled by each school.

The assistance is calculated by providing a portion of the \$5,000 based on the proportion an individual school travels relative to the total distance travelled by all schools. (I.e. school 'x' travels 600km, the total distance travelled by all schools was 4,000km – school 'x' will receive 15% of the funds available.)

Applications for travel assistance close on Friday 6 September.

Resource Assistance Scheme

The Resource Assistance Scheme aims to financially assist football friendly schools in:

- Purchasing jumpers for a school football team/s. Schools entering more than one team in any registered WAFC competition will be given priority
- Assist with the purchasing of equipment to enhance the teaching of Australian Football within the school.

Schools will need to meet a set criteria (e.g. the school has a Coles AFL School Ambassador, participates in competitions of at least 6 weeks in duration or has made a commitment to be involved in the near future) and that the provision of the 'grant' will lead to a potential growth in participation.

These grants will be determined on an individual needs basis and managed by the District / Regional Managers in consultation with the WAFC.

Starting Times and Duration of Matches

All games must start at 4:00pm sharp and finish no later than 5:00pm. Games will be of two 25 minute halves with no time on, with a five (5) minute interval at half time.

Prior to the Game

The home team is to line up in the centre of the ground and wait for the away team to line up opposite. Players, coaches and umpires are to shake hands, both before and after the game.

At the Completion of the Game

The two coaches are to bring teams together to make any appropriate comments and to complete the match report. The Umpires are requested to participate. **THE COMPLETED MATCH REPORT IS TO BE FAXED / EMAILED TO YOUR REGION COORDINATOR BY THE HOME TEAM.**

Conditions of Play

Every endeavour must be made to ensure games are played at the fixtured time and place. If a team forfeits a match or if conditions are not met, a 10-goal win will be awarded to the non-offending team, plus six premiership points. The offending team will be invoiced for any umpiring costs incurred.

In the circumstances where an umpire does not arrive, the game must be played, with umpiring arrangements made to the mutual satisfaction of both teams.

AFL SportsReady Cup Game Points

A Team is awarded 4 points for a win, 2 for a draw, and zero for a loss. However, the umpire can award a maximum of 2 Behaviour points for each team, regardless of the result. Therefore, the maximum total points a team can earn is 6 (i.e. 4 points for a win plus 2 behaviour points awarded by the umpire). A losing team is still eligible to earn 2 behaviour points from the umpire. If a player is 'sent off' for a Red Card offence, behaviour points will be automatically deducted. An umpire may also deduct behaviour points for general poor behaviour, yellow card offences, coach or support staff conduct, etc. In the case of any deduction of behaviour points, the umpire must list the reason on the match report. In discussion with the match Umpire, the Regional Coordinator has the final decision to either uphold or overturn any deduction of behaviour points.

If a winning teams margin exceeds 10 goals the team will only be credited with a maximum of 60 points (10 goals) winning margin (This does not apply in the Cable Division).

Age of Players

The player must be a full-time student at the school and under the age of 18 years as at 30 June in the year of play. **Students in Year 8 and 9 are not permitted to participate in the AFL SportsReady Cup. A lower school competition (WAFC Year 8/9 Schoolboys Football Cup) exists to meet the needs of these students. Issues relating to liability rest squarely with the school.**

Ball

Each competing team is to provide a leather football of a size approved for that competition. The home team shall provide the match ball. The away team is to provide a suitable spare football. The ball shall also be a WAFC agreed sponsored brand.



Drawn Matches

A draw will stand in home and away matches and two points will be awarded to each team, but not in finals. In these circumstances, 5 minutes each way will be played until a result is determined. If poor light or circumstances prevent play from continuing, the match shall be re-scheduled. In the event of a draw in a curtain raiser Grand Final in the Jakovich or Cable divisions, the game will be replayed at the first mutually available Wednesday after the drawn game.

A game will be deemed a final when it is an elimination game i.e. is not part of the regular weekly fixtures. An SSFAC member will make any decision on drawn games and in their absence the responsibility will fall on the Central Field Umpire(s). Refusal by any team to play 5 minutes each way will be deemed a **forfeit** on their behalf and the game will be awarded to the opposing side.

Privacy Policy

Team photographs or other images may be produced during the football season by the governing body (WAFC) and may be utilized for the promotion and development of football by the governing body. Completion and lodgement of the Nomination Form indicates acceptance of this policy.

USE OF STRETCHER / INJURED PLAYERS

In all games including finals any player who in the opinion of the injured player's team officials requires the assistance of a stretcher shall be attended by a suitably trained and certified medical officer in the practice of use of a stretcher prior to removal of that player, UNLESS the player is capable and conscious enough to place themselves on the stretcher without assistance.

If the stretcher has been called for by an authorised person, then the player will be removed from the playing field via the most direct route for play to recommence and the injured player may be replaced through the interchange.

If a player is removed from the field on a stretcher then that player will not take any further part in the game whatsoever.

If, in the opinion of a field umpire or team medical officer, a player cannot be moved from the field of play due to the severity of an injury, then play may be abandoned for the game at the discretion of a meeting between the 2 Coaches and the Field Umpire and or any **SSFAC member** if present.

The **SSFAC** shall be advised of any such abandonment for the purpose of either rescheduling the fixture or determining a result according to the progress score and point of the game at which the game was abandoned.

BLEEDING & BLOOD BORN INFECTIONS

No school shall allow any player to participate in any match or continue to participate in any match for so long as such player:

- (a) is bleeding; or
- (b) Has blood on any part of his/her person or uniform.

Only the field umpires can direct a player to leave the playing field, thereby ensuring the team is not disadvantaged by playing one team member short for any period of time. A player, who refuses to promptly obey a direction of an umpire given in accordance with this policy, shall be reported by the umpire for misconduct in that he/she refused to leave the field.

Upon being directed to leave the playing arena, a player shall not return to take any further part in any match until and unless:

- a) the cause of any such bleeding has been abated;
- b) the injury is securely covered to the extent that no blood is visible;
- c) any bloodstained article of uniform has been removed and replaced;
- d) Any blood on any part of a player's person has been thoroughly cleansed and removed.

CONCUSSION

Concussion occurs when, after a blow to the head, there is brain injury with some immediate disturbance of brain function. Any player showing the signs or symptoms of concussion should be removed from the field immediately and referred to a medical practitioner. A player who has suffered concussion with or without loss of consciousness should not participate in any match or training session until he/she is fully recovered and has been cleared by a thorough medical examination. All players sustaining a concussion require a medical clearance before resumption of their sport.

RACIAL VILIFICATION

1. AN ALLEGED INCIDENT

Conduct that threatens, disparages, vilifies or insults another person on the basis of that person's race, religion, colour, descent or national or ethnic origin. This conduct must take place between bona-fide registered players of the district and does not exclude incidents off the playing arena.

2. RESOLUTION

The Clubs and individuals concerned will take immediate action to resolve the matter. This process **MUST** be in camera and no public statement is allowed by the clubs, players or any representative of the club(s) involved.

3. A COMPLAINT

This can be made by an JCC, DFDC, umpire, a player or a club. It must be lodged with the Junior Competition Committee by 5pm on the first working day after the incident.
Is it the first complain against this player?

YES

NO

4 (a). CONCILIATION

Refers the matter to conciliation, to be resolved within three working days of the incident. The players meet with club representatives and the Tribunal. The complaint is heard in camera.

4 (b). DISTRICT TRIBUNAL

The District Tribunal to make a determination on the matter in accordance with the guidelines set out.

5. DECISION

If the District Tribunal decides:
is the Conciliation successful?

NO

YES

**COMPLAINT
RESOLVED**

OFFICIALS

The Coach

The Coach is to be nominated by the school. If a teacher cannot be found, then the school should arrange for a suitable person from the local community to be interviewed by the school Principal and/or HOLA Health and Physical Education for the coaching position.

It is a condition of this competition that a teacher at the school must be associated with the team and in attendance for the duration of the game.

The Coach's role is paramount. He/she is responsible primarily for the on and off field actions of their players and therefore must set standards of discipline.

Field Umpires

WA Football supports a **ZERO TOLERANCE** stance against any form of umpiring or officials abuse. Any breaches of these codes will result in penalties and sanctions directed at the person responsible, the team and possibly the school.

The Umpires Coordinator shall oversee a panel of umpires from which they will appoint a trained umpire or umpires to officiate at each match. Further, the WAFC encourages qualified students or staff to submit their names to be included on the umpiring panel. Such persons will be paid for their services. Umpires are required to bring Red/Yellow cards to all games.

TEACHERS FROM SCHOOLS COULD BE APPROACHED TO UMPIRE AFL SPORTSREADY CUP GAMES WHEREVER NECESSARY. IF SCHOOLS FAIL TO NOTIFY THE UMPIRE'S COORDINATOR OF ANY ALTERATION TO/OR FORFEIT OF A SCHEDULED MATCH, THE FORFEITING TEAM WILL BE INVOICED FOR THE UMPIRING COSTS INCURRED.

Goal Umpires

Each team must supply one mature goal umpire. He/she must have a white coat, goal flags and a scorecard. Goal umpires must check scores at half time and after the match. Field umpires are to supervise this.

Boundary Umpires

Each competing team shall supply a boundary umpire who shall be correctly attired and of sufficient knowledge and maturity to correctly throw the ball into play and carry out all other responsibilities of the position.

Finals Umpires

These umpires will be organised by the Umpire Coordinator.

Should a field umpire not be available to officiate at any match the opposing coaches or team officials may agree to appoint any person to act in that capacity. In such case the appointed umpire shall have the same responsibilities and authority as any umpire appointed by the Umpires Coordinator.

Timekeeper

The home team is to supply a timekeeper who will have a siren or a hooter. A stopwatch is to be used at all times to ensure accurate times are maintained. The WAFC will supply a timekeeper for all curtain raiser matches unless advised otherwise.

Match Reports

These are the responsibility of the **HOME** team and are to be completed on the day and signed by the coaches and umpires. Offending players are to be noted in the report. **The report is to be forwarded to the Region Coordinator by 10.30am the day after the game.** This is essential to compile regular premiership tables.

CODES OF CONDUCT

The major objective of Junior Football is to provide an opportunity for all children to play Australian Football in a safe environment designed to maximise the acquisition of skill and provide enjoyment (Fun). The following Codes of Conduct, if followed by all people involved in our junior game, should ensure the fulfilment of this important objective. The West Australian Football Development Council strongly advises that all persons involved be issued with copies of the appropriate code of conduct. WA Football supports acts of sportsmanship (hand shaking etc) between players, coaches, administrators, umpires etc.

ADMINISTRATOR'S CODE OF CONDUCT

- Ensure that equal opportunities for participation in sports are made available to all children, regardless of ability, size, shape, gender, age, disability or ethnic origin.
- Ensure that rules, equipment, length of games and training schedules take into consideration the age, ability and maturity level of participating children.
- Ensure that adequate supervision is provided by qualified and competent coaches and officials capable of developing appropriate sports behaviour and skill technique.
- Remember that children participate for enjoyment and play down the importance of rewards.
- Provide clinics aimed at improving the standards of coaching and officiating, with an emphasis on appropriate behaviour and skill technique.
- Ensure that parents, coaches, sponsors, trainers and participants understand their responsibilities regarding fair play.
- Modify rules and regulations to match the skill level of children and their needs.
- Condemn unsporting behaviour and promote respect for all opponents.
- Publicly encourage rule changes which will reinforce the principles of participation for fun and enjoyment.
- Ensure that your behaviour is consistent with the principles of good sporting behaviour.
- Make a personal commitment to keep yourself informed of sound officiating principles and the principles of growth and development of children.
- Ensure promotion, well-being and safety of umpires and encourage good sportsmanship before, during and after matches.
- Ensure positive player/umpire/relationships are continually developed.

COACH'S/TEACHER'S CODE OF CONDUCT

- Be reasonable in your demands on young players' time, energy and enthusiasm.
- Avoid over-playing the talented players. The "just-average" players need and deserve equal time.
- Remember that children participate for fun and enjoyment.
- Ensure that equipment and facilities meet safety standards and are appropriate to the age and ability of the players.
- Take into consideration the maturity level of the children, when scheduling and determining the length of practice times and competition.
- Develop team respect for the ability of opponents as well as for the judgment of officials and opposing coaches.
- Ensure positive coach / umpire relationships are continually developed.
- Follow the advice of a physician when determining when an injured player is ready to recommence training or competition.
- Keep yourself informed of sound coaching principles and the principles of growth and development of children.

- Create opportunities to teach appropriate sports behaviour as well as basic skills.
- Ensure that skill learning and appropriate sports behaviour have priority over highly structured competitions for young children.
- Help children understand the responsibilities and implications of their freedom to choose between fair and unfair play.
- Ensure knowledge of laws of game is such that you encourage the players to play the game and accept the role of the umpire.

Be aware of your obligations to adhere to all policies contained or referred to within this manual.

PARENT'S/SPECTATOR'S CODE OF CONDUCT

- Encourage children to participate, if they are interested.
- Encourage children to always participate according to the rules.
- Never ridicule or yell at a child for making a mistake or losing a game.
- Remember that children learn best from example. Applaud good plays by all teams.
- If you disagree with an official, raise the issue through the appropriate channels rather than questioning the official's judgment and honesty in public.
- Support all efforts to remove verbal and physical abuse from sporting activities.
- Recognise the value and importance of volunteer coaches.
- Remember that children play organised sports for fun. They are not playing for the entertainment of spectators only, nor are they miniature professionals.
- Condemn the use of violence in any form, be it by spectators, coaches, officials or players.
- Encourage players to follow the rules and the umpire's decisions.
- Demonstrate appropriate social behaviour by not using foul language, harassing players, coaches or umpires.

PLAYER'S CODE OF CONDUCT

- Play by the rules.
- Never argue with an official. If you disagree, discuss the matter with your coach or teacher after the game.
- Control your temper. Verbal abuse of officials or other players, or provoking an opponent is not acceptable.
- Work equally hard for yourself and for your team. Your team's performance will benefit, so will you.
- Be a good sport. Applaud all good plays whether they be by your team, opponent or the other team.
- Treat all players as you would like to be treated. Do not interfere with, bully or take unfair advantage of another player.
- Cooperate with your coach, team mates and opponents. Without them there would no competition.
- Play for the "fun of it" and not just to please parents and coaches.
- Avoid using derogatory language.
- Be prepared to take responsibility for your actions.

RUNNER'S/WATER STEWARDS CODE OF CONDUCT

- The runner SHOULD BE AN ADULT.
- The runner must be clearly identified.
- The runner's name must be entered in both team books.
- No abusive language or swearing.
- Support the decision of the umpires at all times and never question such decision.

UMPIRE'S CODE OF CONDUCT

- Modify rules and regulations to match the skill level of children and their needs.
- Compliment all participants on their efforts.
- Be consistent, objective and courteous in calling all infractions.
- Condemn unsporting behaviour and promote respect for all opponents.
- Ensure that the “spirit of the game” for children is not lost by using common sense and not over emphasising errors.
- Publicly encourage rule changes which will reinforce the principles of participation for fun and enjoyment.
- Ensure that your behaviour is consistent with the principles of good sporting behaviour. Actions speak louder than words.
- Make a personal commitment to keep yourself informed of sound officiating principles and the principles of growth and development of children.
- Avoid use of derogatory language based on gender.

REPORTS

The following personnel shall have the power to report any player or official for any breach of the laws of the game, codes of conduct, member protection policies or of the rules or By-laws of the **Secondary School Football Advisory Committee**.

- (a) Field Umpire
- (b) Umpires' Coach whilst in an observing capacity
- (c) Boundary umpires if officially appointed by the **Secondary School Football Advisory Committee**
- (d) Goal umpires if officially appointed by the **Secondary School Football Advisory Committee**
- (e) Stewards if officially appointed by the **Secondary School Football Advisory Committee**
- (f) Any member of the **Secondary School Football Advisory Committee**

Any player or official, who is to be reported, must be advised of such report prior to the commencement of the next quarter of the game, unless the offence occurs in the final quarter in which case advice to the Team Manager when passing on the official report sheet shall suffice.

REPORTED PLAYERS

A player against whom any charge has been proved at a hearing of the P&D Board or received a prescribed penalty during the current season, or any player who has received an automatic suspension (ONE WEEK) as a result of having been sent from the ground three (3) times during the season, shall be disqualified from participation in the voting for any Fairest and Best award.

Any player or official suspended by either a tribunal or prescribed penalty will not be permitted to play, coach or participate in any capacity, in any affiliated district competition including schools, senior metropolitan community football or regional football, for the duration of the penalty. The reverse also applies.

THE “YELLOW” CARDS



**ORDER OFF - COOL OFF
FOR 15 MINUTES PLAYING TIME**

**(For MINOR offences and any
Behaviour Detrimental to Football)**

FRONT OF YELLOW CARD

YELLOW CARD CONDITIONS

1. **AN OFFENDER ORDERED OFF FOR A YELLOW CARD OFFENCE CAN BE REPLACED IMMEDIATELY**
2. In the event that a Player or Official:
 - (a) Is issued with two Yellow Card offences on the day of the match, then the offender shall take no further part in the game but can be replaced immediately.
 - (b) When ordered off for a Yellow Card offence, fails to leave the field **immediately** when directed by the field umpire, then the offender shall be reported for misconduct and consequently be deemed to have committed a Red Card offence.

BACK OF YELLOW CARD

THE “RED” CARDS



FOOTBALL COMMISSION INC.

**ORDER OFF - STAY OFF
FOR THE REMAINDER OF THE MATCH**

(For REPORTABLE offences ONLY)

FRONT OF RED CARD

RED CARD CONDITIONS

**AN OFFENDER ORDERED OFF FOR A RED CARD OFFENCE
CANNOT BE REPLACED FOR 15 MINUTES game time**

1. The offending Player or Official shall attend a Protests and Disputes Tribunal or where applicable, request the offer a Prescribed Penalty.
2. A Player or Official who fails to leave the Arena **immediately** when directed by the umpire shall be reported for misconduct, the match shall be terminated and the offending person's team will forfeit the match.

BACK OF RED CARD

Step One: The Report

Should any player be reported, the umpire will provide a thorough description of the offence on the Match Report. In order for the matter to be dealt with quickly, he/she must take the following steps **immediately following the game**:

1. Notify the coach of the offending player that the report has been made against.
2. Outline the offence the player has been charged with.
3. Notify the opposing coach if a player on his team was involved in the incident and may be required to attend a tribunal hearing.
4. Notify the Umpire's Coordinator that evening of the report.

From here, it is the coach's responsibility to:

- a. Outline the player's options with regard to a penalty:
 - Accept a prescribed penalty
 - Proceed with a tribunal hearing
- b. Contact the Region Coordinator prior to 12pm the following day to notify them as to the player's decided option.
- c. If an opposing player has been offended against, his coach must too, contact the Region Coordinator by 12pm the following day to find out if the player is required at a tribunal hearing.
- d. Notify the Umpire's Coordinator that evening of the report.

Step Two: Player's Decision

Once being notified that a report has been lodged, the player has until the following morning to notify his coach of the decision he has made regarding the penalty. His options are to:

- a. Accept the umpire's decision and take a prescribed penalty, hence eliminating the need for an actual hearing.
- b. Dispute the umpire's decision and choose to have the case heard by the P & D Panel on the Thursday evening, or an evening arranged by the Schools Competitions Manager.
In either case, the player must have confirmation from a parent/guardian and/or School Principal/HOLA that the decided course of action meets with their approval.

From this point on, the following shall occur:

DECISION: PRESCRIBED PENALTY

If the player chooses this course of action, the following must occur:

1. The player notifies the coach of his decision prior to school the following day. A standard "Confirmation of Report Form" must be completed by the player and a parent/guardian and/or School Principal/HOLA and returned to school the following day.
2. The coach contacts the Region Coordinator and informs him of the player's decision. Prior to 9.30am a copy of the Confirmation of Report Form is faxed to the Regional Coordinator.
3. The Region Coordinator contacts the Schools Competitions Manager and informs him of the decision. Schools Competitions Manager will notify any relevant community/school sporting bodies affected by the suspension.

DECISION: DISPUTE THE CHARGE

If the player chooses this course of action, the following must occur:

1. The player must notify his coach of his decision prior to school the following day.
2. The coach must notify the Region Coordinator (prior to 9.30am), that a tribunal hearing needs to be convened.
3. The Regional Coordinator then notifies the Schools Competitions Manager to arrange tribunal proceedings.

NOTE: The coach is responsible for arranging advocacy for a player should that player choose to dispute the charge.

ARRANGING THE HEARING

To ensure that the case in question is resolved as quickly as possible, the following procedure should be observed by the Schools Competitions Manager.

1. Arrange the case to be heard at the offices of the WAFC (Patersons Stadium). Case should be heard as soon as possible following the date of the charge.
2. Arrange for a panel of three delegates to attend the hearing. These should consist of:
Chairman, Secondary School Football Advisory Committee
Community Football Council or WAFC representative
School Sport WA representative
If one of these parties is unavailable then a representative of the SSFAC shall be the substitute.
3. Contact the teacher/coach of the player charged and informs them of the time and location of the hearing.
4. Contact the teacher/coach of the player infringed against (if required), and inform them of the time/location of the hearing.
5. Contact the Umpire Coordinator with the above-mentioned details and request he arrange for the charging umpire to attend the hearing.

MISCONDUCT

- The Coach is the key to a team's behaviour both on and off the field. All coaches are required to attend a coaches meeting with the Region Coordinator.
- Coaches who deliberately break the 'Codes of Behaviour' will be asked to step down.
- The send off rule will be applied in all games.
- Red and Yellow Cards will be used as in line with WAFC standard Order Off Rule. That is:
- Any Player or Official receiving a Red Card is automatically reported and shall take no further part in any match conducted on the day the offender was reported and is required to attend a Protests and Disputes Tribunal or where applicable, request the offer of the prescribed penalty.
- If a team's conduct is deemed by the umpires as not upholding the Codes of Conduct for the competition, behaviour points may be withheld.
- An independent Tribunal consisting of representatives as listed in point 2 above will hear any major serious charges.

ANY PLAYER OR OFFICIAL SUSPENDED BY EITHER A TRIBUNAL OR PRESCRIBED PENALTY WILL NOT BE PERMITTED TO PLAY, COACH OR PARTICIPATE IN ANY CAPACITY, IN ANY AFFILIATED DISTRICT COMPETITION INCLUDING SCHOOLS, SENIOR METROPOLITAN, JUNIOR COMMUNITY FOOTBALL OR REGIONAL FOOTBALL, FOR THE DURATION OF THE PENALTY. THE REVERSE ALSO APPLIES.

STANDARD RANGE OF PENALTIES FOR REPORTABLE OFFENCES:

(RELATING TO SPECIFIC REPORTABLE OFFENCES UNDER LAW 19.2.2)

(a) Making contact with an umpire;

1st Offence: Range: 4 weeks to 2 years

Negligent 4-10 weeks, reckless 10 weeks- 1 year, intentional 1-2 years

2nd Offence: Range 8 weeks to 4 years

Negligent 8-20 weeks, reckless 20 weeks- 2 years, intentional 2-4 years

Striking an Umpire;

1st Offence: Range: 2 years to Life

Negligent 2-4 years, reckless 4-10 years, intentional 10 years – Life

2nd Offence: Range: 4 years to Life

Negligent 4-8 years, reckless 8-20 years, intentional 20 years – Life

(b) Attempting to make contact with an Umpire;

1st Offence: Range: 2 weeks to 1 year

Negligent 2-5 weeks, reckless 5-10 weeks, intentional 10 weeks-1 year.

2nd Offence: range: 4 weeks to 2 years

Negligent 4-10 weeks, reckless 10 weeks – 1 year, intentional 1-2 years

Attempting to strike an Umpire;

1st Offence: Range: 1 year to 10 years

Negligent 1-2 years, reckless 2-5 years, intentional 5-10 years

2nd Offence: Range: 2 years to Life

Negligent 2-4 years, reckless 4-10 years, intentional 10 years -Life

(c) Using abusive, insulting, threatening or obscene language towards or in relation to an Umpire;

1st Offence: abusive/obscene 2-4 weeks, insulting/threatening 4-10 weeks

2nd Offence: abusive/obscene 4-8 weeks, insulting/threatening 8-20 weeks

(d) Behaving in an abusive, insulting, threatening or obscene manner towards or in relation to an Umpire;

1st Offence: abusive/obscene 2-4 weeks, insulting/threatening 4-10 weeks

2nd Offence: abusive/obscene 4-8 weeks, insulting/threatening 8-20 weeks

(e) Disputing a decision of an Umpire; (Prescribed Penalty offer – 1 week)

1st Offence: Yellow Card by Umpire – Cool Off for 15 minutes

2nd Offence: 1 week

(f) Use of an Obscene gesture; (Prescribed Penalty offer – 1 week)

1st Offence: 1-2 weeks

2nd Offence: 2-4 weeks.

(g) Intentionally, recklessly or negligently:-

(i) Kicking another person;

1st Offence: Range: 2-10 weeks

Negligent 2 weeks, reckless 3-6 weeks, intentional 6-10 weeks

2nd Offence: Range: 4-20 weeks

Negligent 4 weeks, reckless 6-12 weeks, intentional 12-20 weeks

- (ii) **Striking another person;**
1st Offence: Range: 2-10 weeks
Negligent 2 weeks, reckless 3-6 weeks, intentional 6-10 weeks
2nd Offence: Range: 4-20 weeks
Negligent 4 weeks, reckless 6-12 weeks, intentional 12-20 weeks
- (iii) **Tripping another person whether by hand, arm, foot or leg;**
1st Offence: Range: 2-10 weeks
Negligent 2 weeks, reckless 2-4 weeks, intentional 4-10 weeks
2nd Offence: Range: 4-20 weeks
Negligent 4 weeks, reckless 4-8 weeks, intentional 8-20 weeks
- (iv) **Engaging in Time Wasting; (Prescribed Penalty offer – 1 week)**
1st Offence: Yellow Card by Umpire – Cool Off for 15 minutes
2nd Offence: 1 week
- (v) **Charging another person; (refer to law 15.4.4)**
1st Offence: Range: 2-10 weeks
Negligent 2 weeks, reckless 3-6 weeks, intentional 6-10 weeks
2nd Offence: Range: 4-20 weeks
Negligent 4 weeks, reckless 6-12 weeks, intentional 12-20 weeks
- (vi) **Throwing or pushing another player after that player has taken a Mark, disposed of the football or after the football is otherwise out of play; (Prescribed Penalty offer – 1 week)**
1st Offence: Yellow Card by Umpire – Cool Off for 15 minutes
2nd Offence: 1 week
- (vii) **Engaging in rough play against an opponent which in the circumstances is unreasonable;**
 Examples such as but not limited to: Using hands to claw, gouge or scratch an opponent in the region of the head, including the face, mouth, eyes, nose, and ears; Spear Tackles, Head Butting, Biting, Elbowing, Kneeing, Choking, Head Locking, Swinging an arm to the head region (“Coat Hanger”), Making unreasonable contact to an opponent who is marking or attempting to mark the football.
1st Offence: Range: 2-10 weeks
Negligent 2 weeks, reckless 3-6 weeks, intentional 6-10 weeks
2nd Offence: Range: 4-20 weeks
Negligent 4 weeks, reckless 6-12 weeks, intentional 12-20 weeks
- (viii) **Engaging in a melee, except where a player’s sole intention is to remove a teammate from the incident; (Prescribed Penalty offer – 1 week)**
1st Offence: Yellow Card by Umpire – Cool Off for 15 minutes
2nd Offence: 1 week
- (ix) **Spitting at or on another person;**
1st Offence: Range: 2-4 weeks
Negligent 2 weeks, reckless 2-3 weeks, intentional 3-4 weeks
2nd Offence: Range: 4-8 weeks
Negligent 4 weeks, reckless 4-6 weeks, intentional 6-8 weeks

- (h) **Attempting to kick another person; (Prescribed Penalty offer – 1 week)**
1st Offence: Range: 1-5 weeks
Negligent 1 week, reckless 1-2 weeks, intentional 2-5 weeks
2nd Offence: Range: 2-10 weeks
Negligent 2 weeks, reckless 2-4 weeks, intentional 4-10 weeks
- (i) **Attempting to strike another person; (Prescribed Penalty offer – 1 week)**
1st Offence: Range: 1-5 weeks
Negligent 1 week, reckless 1-2 weeks, intentional 2-5 weeks
2nd Offence: Range: 2-10 weeks
Negligent 2 weeks, reckless 2-4 weeks, intentional 4-10 weeks
- (j) **Attempting to trip another person whether by hand, arm, foot or leg; (Prescribed Penalty offer – 1 week)**
1st Offence: Range: 1-5 weeks
Negligent 1 week, reckless 1-2 weeks, intentional 2-5 weeks
2nd Offence: Range: 2-10 weeks
Negligent 2 weeks, reckless 2-4 weeks, intentional 4-10 weeks
- (k) **Intentionally shaking a goal or behind post when another player is preparing to Kick or is Kicking for Goal or after the Player has Kicked Goal and the ball is in transit; (Prescribed Penalty offer – 1 week)**
1st Offence: 1 week
2nd Offence: 2 weeks
- (l) **Wrestling another person; (Prescribed Penalty offer – 1 week)**
1st Offence: Yellow Card by Umpire – Cool Off for 15 minutes
2nd Offence: 1 week
- (m) **Using abusive, insulting, threatening or obscene language; (Prescribed Penalty offer – 1 week)**
1st Offence: abusive/obscene 1-2 weeks, insulting/threatening 2-5 weeks
2nd Offence: abusive/obscene 2-4 weeks, insulting/threatening 4-10 weeks
- (n) **Failing to leave the playing surface when directed to do so by a field umpire; (Prescribed Penalty offer – 2 weeks)**
1st Offence: 2 weeks
2nd Offence: 4 weeks
- (o) **Wearing boots, jewellery or equipment prohibited under Law 9; (Prescribed Penalty offer – 1 week)**
1st Offence: Yellow Card by Umpire – Cool Off for 15 minutes
2nd Offence: 1 week

(p) **Any act of misconduct. (Prescribed Penalty offer – 2 weeks)**

Examples such as but not limited to: Indecent Exposure, Biting, Instigating a Melee, Failing to follow the Direction of a Field Umpire or any Behaviour Detrimental to Football.

1st Offence: 2-4 weeks

2nd Offence: 4-8 weeks

OR Law 20.2(f) below – misconduct of a serious nature

(RELATING TO THE SPECIFIC REPORTABLE OFFENCE UNDER THE ORDER OFF LAW 20.2)

20.2(f) An act of misconduct if the Umpire is of the opinion that the act constituting misconduct is serious in nature;

1st Offence: 3-6 weeks

2nd Offence: 6-12 weeks

Examples such as but not limited to **serious** acts of misconduct: Indecent Exposure, Biting, Instigating a Melee, Failing to follow the Direction of a Field Umpire or any Behaviour Detrimental to Football.

INVESTIGATION PROCEDURES / COMPLAINTS & APPEALS

Any school may refer a protest or charge, or report any infringement of the rules of the Laws of Australian Rules Football against any other school, player or official. School generated complaints may be lodged with the **SSFAC** within 48 hours of an alleged incident, on an official school letterhead signed by the school Principal and/or HOLA making the complaint on behalf of his school.

The **SSFAC** will determine whether an INVESTIGATIONS Panel, Appeals Committee or P & D tribunal will be convened to deal with any complaints that may not fit within normal disputes processes. All complaints will be dealt with in a time frame suitable to the **SSFAC**.

The **SSFAC** may request either written or in person accounts relevant to the investigation from either of the schools involved in the protest, charge or report. Both schools shall be given at least 24 hours notice to attend either an in person interview, tribunal or both.

Any school may appeal in writing against any imposed penalty by P & D Tribunal within forty eight (48) hours of receiving notification of this penalty. The **SSFAC** shall consider any such appeal, which must be accompanied by new evidence.

The decision of the **SSFAC** in regard to any appeal shall be **final** and in the case of a failed appeal. The **SSFAC** may ask for the matter to be referred to the WAFCDC for further consideration and a final determination.

The **SSFAC Chairman** reserves the right to accept or refuse the lodgement of any other complaint outside of the usual processes.



PROTESTS & DISPUTES TRIBUNAL

A Protests & Disputes Tribunal will be convened by the **SSFAC**. Schools may appeal to the **SSFAC** against the severity of tribunal penalties in writing, accompanied by new evidence within forty eight (48) hours of receiving notification of the original penalty.

SCHOOL and COMMUNITY FOOTBALL

- The W AFC sees the delivery of Australian Football as a partnership between schools and community groups.
- Schools recognise that sport is an aspect of the school curriculum and is an integral part of an individual's development.
- Community groups recognise the school system as an integral and positive part of football development and assist and encourage participation.
- Schools and community groups/clubs should establish links to promote continuity of delivery.
- The use of existing school facilities by community groups is encouraged.
- Schools should be receptive to interaction with community groups within and outside of school hours.
- The W AFC works closely with the following key advisory groups in designing and implementing quality football education programs
 - Education Advisory Group
 - Primary School Football Advisory Committee
 - Secondary School Football Advisory Committee
 - Schoolgirls Football Advisory Committee

PUBLIC STATEMENT

Public statements can only be made by the designated **W AFC spokesperson**.

2012 WINNERS

In the **25th** year of the competition, the following schools emerged victorious in their respective divisions. Congratulations to the following schools.



BARRY CABLE DIVISION
Clontarf Aboriginal College



GLEN JAKOVICH DIVISION
Mandurah Catholic College



BILL WALKER DIVISION
Albany Senior High School



BARRY CABLE DIVISION

SCHOOL	GROUND	COACH	PHONE	EMAIL
CBC Fremantle	Fremantle Park	Jason Matthews	0413 262 530	jasonma@cbcfremantle.wa.edu.au
Clontarf Aboriginal College	School Oval	Patrick Bowden	0400 315 809	pbowden@clontarf.wa.edu.au
Comet Bay College	School Oval	Nic Chidgzey	0410 566 759	nicolas.chidgzey@education.wa.edu.au
Governor Stirling SHS	TBA	Andrew Davini	0423 211 042	andrew.davini@education.wa.edu.au
La Salle College	School Oval	Joe Sorgiovanni	0401 887 642	jso@lasalle.wa.edu.au
Mazenod College	School Oval	Tim Grabski	0439 085 152	grabski.timothy@mazenod.wa.edu.au
Newman College	School Oval	Matthew Connell	0411 959 437	connell.matthew@cathednet.wa.edu.au
Sacred Heart College	School Oval	Barry Harrington	0407 221 791	harrington@sacredheart.wa.edu.au
St Stephen's - Duncraig	Seacrest Reserve	Damon Eaton	0429 933 478	damon.eaton@ststephens.wa.edu.au
Mandurah Catholic College	School Oval	Scott Bennett	0439 958 871	bennett.scott@cathednet.wa.edu.au

Region Coordinator: Ray Barrett - Lockridge SHS, 0412 687 585 (m)

Results to be FAXED or EMAILED by the HOME TEAM before 10.30am on Thursday morning.

Fax: 9279 2469 / Email: ray.barrett@education.wa.edu.au

GLEN JAKOVICH DIVISION - NORTH EAST

SCHOOL	GROUND	COACH	PHONE	EMAIL
Chisholm Catholic College	Hillcrest Reserve	Andrew Glover	0412 029 773	a.glover@chisholmcc.wa.edu.au
Greenwood SHS	School Oval	Brenden Guard	0407 146 187	brendan.guard@education.wa.edu.au
John Forrest SC	Cooke Reserve	Reece Pheonix	0433 710 839	reece.pheonix@education.wa.edu.au
John Septimus Roe	School Oval	Ryan Clarke	0438 864 485	rclarke@jsracs.wa.edu.au
Mercy College	School Oval	Albert Borrello	0492 479 247	borrello.albert@mercy.wa.edu.au
Swan Christian College	School Oval	Ryan Faed	0422 137 477	ryanf@scea.wa.edu.au
Warwick SHS	School Oval	John Batten	0417 971 530	john.batten1@education.wa.edu.au
WA College of Agric.- Cunderdin	AWAY GAMES ONLY	Paul Jasper	0417 353 246	paul.jasper@education.wa.edu.au
Servite College	AWAY GAMES ONLY	John Simmons	0401 756 585	simmons.john@cathednet.wa.edu.au
Mt Lawley SHS	Hamer Park	Andrew Ruck	0421 026 416	andrew.ruck@lawley.wa.edu.au
Ellenbrook Secondary College	School Oval	Darren Young	0434 972 878	darren.young@education.wa.edu.au
Mazenod College 2	School Oval	Chris Bolton	0418 988 327	bolton.chris@mazenod.wa.edu.au

Region Coordinator: Joe Sorgiovanni - La Salle College, 0401 887 642 (m)
Results to be FAXED or EMAILED by the HOME TEAM before 10.30am on Thursday morning.
Fax: 9274 4085 / Email: jso@lasalle.wa.edu.au

GLEN JAKOVICH DIVISION - NORTH WEST

SCHOOL	GROUND	COACH	PHONE	EMAIL
Carine SHS	Percy Doyle Reserve	Scott Underwood	0422 533 664	scott.underwood@education.wa.edu.au
Churchlands SHS	School Oval	Dave Bongiascia	0402 693 411	dbongiascia@churchlands.wa.edu.au
Irene McCormack	School Oval	Ryan Coutts	0401 483 839	coutts.ryan@imcc.wa.edu.au
John XX111 College	School Oval	Darren Kowal	0403 574 817	kowal.darren@johnxxiii.wa.edu.au
Mater Dei College	School Oval	Chris Sinagra	0400 519 739	chris.sinagra@mdc.wa.edu.au
Prendiville Catholic College	School Oval	Steve Lynch	0417 938 278	slynch@prendiville.wa.edu.au
Shenton College	School Oval	Murray Baker	0439 095 285	murray.baker@education.wa.edu.au
St Mark's ACS	School Oval	Patrick Squire	0416 103 557	psquire@stmarks.wa.edu.au
St Stephen' School - Carramar	School Oval	Stuart Gale	0402 418 513	stuart.gale@ststephens.wa.edu.au
Wanneroo SHS	Wanneroo Showgrounds	Mark Harris	0413 510 912	mark.harris@education.wa.edu.au
Woodvale SHS	School Oval	Wayne Jaggard	0419 317 318	wjaggard@woodvale.wa.edu.au

Region Coordinator: Justin Burt - Wanneroo SHS, 0407 448 614
Results to be FAXED or EMAILED by the HOME TEAM before 10.30am on Thursday morning.
Fax: 9306 3655 / Email: justin.burt@education.wa.edu.au

GLEN JAKOVICH DIVISION - SOUTH EAST

SCHOOL	GROUND	COACH	PHONE	EMAIL
Clontarf Aboriginal College 2	School Oval	Con Regan	0499 590 005	cregan@clontarf.wa.edu.au
Darling Range Sports College	School Oval	Clay McLernon	0402 540 015	clay.mclernon@education.wa.edu.au
Kelmscott SHS	John Dunne Oval	Glen Batten	0414 735 395	glen.batten@education.wa.edu.au
Kent St	School Oval	Ben Clarke	0438 909 958	benjamin.clarke@education.wa.edu.au
Lynwood SHS	Ferndale Oval	Joel Agland	0401 519 539	joel.agland@education.wa.edu.au
Sevenoaks Senior College	Queens Park Oval	Brad Cox	0488 757 666	bradley.cox2@education.wa.edu.au
St Norbert College	Queens Park Oval	Mark Pavey	0429 881 490	mpavey@norbert.wa.edu.au
Lumen Christi College	School Oval	Ben Shaw	0412 546 853	shaw.ben@lumen.wa.edu.au

Region Coordinator: Greg Maynard - Darling Range Sports College, 0402 979 545 (m)
Results to be FAXED or EMAILED by the HOME TEAM before 10.30am on Thursday morning.
Fax: 9453 1464 / Email: greg.maynard@education.wa.edu.au

GLEN JAKOVICH DIVISION - SOUTH WEST

SCHOOL	GROUND	COACH	PHONE	EMAIL
Applecross SHS	AWAY GAMES ONLY	Mike Laycock	0405 329 864	michael.laycock@education.wa.edu.au
CBC Fremantle 2	Fremantle Park	Zachary Preston	0401 676 677	Preston.Zachary@cathednet.wa.edu.au
Corpus Christi College	School Oval	Stephen Tingwell	0439 903 992	skingwell@corpus.wa.edu.au
Emmanuel Catholic College	School Oval	Steve Pendleton	0417 968 765	pendleton.steve@cathednet.wa.edu.au
Seton Catholic College	AWAY GAMES ONLY	Mark McGough	0408 544 153	mcgough.mark@cathednet.wa.edu.au
Melville SHS	Winacott Reserve	Justin Leech	0401 468 581	justin.leech@education.wa.edu.au

Region Coordinator: Matthew Hayes, 0434 363 714 (m)
Results to be EMAILED or FAXED by the HOME TEAM before 10.30am on Thursday morning.
Fax: 9434 3662 / Email: Matthew.Hayes@dsr.wa.gov.au

GLEN JAKOVICH DIVISION - ACC

SCHOOL	GROUND	COACH	PHONE	EMAIL
All Saints College	School Oval	Oliver Beath	0411 018 939	oliver.beath@allsaints.wa.edu.au
Carey Baptist College	School Oval	Jon Grullis	0433 367 447	jgrullis@carey.wa.edu.au
John Wollaston ACS	School Oval	Quentin Hess	0423 112 757	qhess@jwacss.wa.edu.au
Ursula Frayne	Higgins Reserve	Jason Bradley	0408 678 402	bradley.jason@cathednet.wa.edu.au
Kennedy Baptist College	Murdoch Uni Sports Oval	Tim Basile	0422 406 058	tbasile@kennedy.wa.edu.au

Region Coordinator: Jon Grullis, 0433 367 447 (m)
Results to be EMAILED or FAXED by the HOME TEAM before 10.30am on Thursday morning.
Fax: 9394 9112 / Email: jgrullis@carey.wa.edu.au

GLEN JAKOVICH DIVISION - PEEL

SCHOOL	GROUND	COACH	PHONE	EMAIL
Frederick Irwin	School Oval	Sheldon Migel	0424 153 165	miguels@fias.wa.edu.au
Kolbe Catholic College	School Oval	Michael McCann	0438 994 259	mccann.michael@cathednet.wa.edu.au
Pinjarra SHS	Sir Ross McLarty Oval	Paul Galloway	0428 311 976	paul.galloway@education.wa.edu.au
Halls Head Community College	Peelwood Parade	Mike Gray	0407 645 367	Michael.Gray2@education.wa.edu.au
John Tonkin College	Park Rd Mandurah	Geoff Hayes	0409 436 334	geoffreyhayes@education.wa.edu.au

Region Coordinator: Paul Galloway - Pinjarra SHS, 0428 311 976 (m)
Results to be FAXED or EMAILED by the HOME TEAM before 10.30am on Thursday morning.
Fax: 9531 1991 / Email: paul.galloway@education.wa.edu.au

ROSS GLENDINNING DIVISION - NORTH EAST

SCHOOL	GROUND	COACH	PHONE	EMAIL
Carmel Adventist College	Pickering Brook	Rob Stanton	0447 686 722	Robstanton@adventist.org.au
Helena College	School Oval	Joe Kendall	0415 797 912	jkendall@helena.wa.edu.au
Bullsbrook DHS	Pickett Park Bullsbrook	Ricki Cocliff	0402 839 418	ricki.cocliff@education.wa.edu.au
Ballajura Community College	School Oval	Daniel Holt	0420 858 428	daniel.holt@education.wa.edu.au

Region Coordinator: WAFS Schools Competitions Manager, 9381 5599
Results to be EMAILED or FAXED by the HOME TEAM before 10.30am on Thursday morning.
Fax: 9381 7947 / Email: canderson@wafc.com.au

ROSS GLENDINNING DIVISION - NORTH WEST

SCHOOL	GROUND	COACH	PHONE	EMAIL
Balga SHS	School Oval	Jason Bristow	0438 883 140	jason.bristow3@education.wa.edu.au
Clarkson Community HS	School Oval	Malcolm Clark	0418 864 113	malcolm.clark@education.wa.edu.au
Duncraig SHS	School Oval	Stuart Denton	0433 599 557	stuart.denton@education.wa.edu.au
Wanneroo SHS 2	Wanneroo Showgrounds	Justin Burt	0407 48 614	justin.burt@education.wa.edu.au

Region Coordinator: Justin Burt – Wanneroo SHS, 0407 448 614 (m)
Results to be FAXED or EMAILED by the HOME TEAM before 10.30am on Thursday morning.
Fax: 9306 3655 / Email: justin.burt@education.wa.edu.au

ROSS GLENDINNING DIVISION - SOUTH

SCHOOL	GROUND	COACH	PHONE	EMAIL
Dale Christian School	Gwynn Park	Yani Lotsos	0412 731 604	lotsosy@dalecs.wa.edu.au
Darling Range Sports College 2	School Oval	Clay McLernon	0402 540 015	clay.mclernon@education.wa.edu.au
Leeming SHS	Peter Ellis Oval	Shane Ellis	0407 083 251	shane.ellis@education.wa.edu.au
Lesmurdie SHS	Ray Owen Reserve	Michael Oliver	0411 125 932	michael.oliver@education.wa.edu.au
Serpentine Jarrahdale Grammar	School Oval	James Bristow	0403 710 405	jbristow@sjgs.wa.edu.au
Thornlie SHS	Berehaven Reserve	Rod Firth	0409 370 122	Rodney.Firth@education.wa.edu.au
Cecil Andrews SHS	Gwynne Park	Jeremy Bruse	0416 025 999	jeremy.bruse@education.wa.edu.au
Canning Vale College	School Oval	Jamie Connelly	0425 843 061	jamie.connelly2@education.wa.edu.au

Region Coordinator: W AFC Schools Competitions Manager, 9381 5599
Results to be EMAILED or FAXED by the HOME TEAM before 10.30am on Thursday morning.
Fax: 9381 7947 / Email: canderson@wafc.com.au

ROSS GLENDINNING DIVISION - PEEL

SCHOOL	GROUND	COACH	PHONE	EMAIL
Gilmore College	School Oval	Jeremy Ingram	0410 689 134	jeremy.ingram@education.wa.edu.au
Living Waters Lutheran College	Warnbro Oval	Josh Ainsworth	0430 595 216	jainsworth@livingwaters.wa.edu.au
Coodanup Community College	School Oval	Jake Foley	0459 073 887	jake.foley@education.wa.edu.au
Tranby College	Settlers Oval	Troy Mollica	0413 577 652	mollicat@tranby.wa.edu.au

Region Coordinator: Paul Galloway - Pinjarra SHS, 0428 311 976 (m)
Results to be FAXED or EMAILED by the HOME TEAM before 10.30am on Thursday morning.
Fax: 9531 1991 / Email: paul.galloway@education.wa.edu.au



THE LEGENDS



ROSS GLENDINNING (East Perth, North Melbourne, West Coast Eagles)

Was a superb key position player, Glendinning established an Australia-wide reputation for excellence as a key defender and key forward. 286 games (56 East Perth, 190 North Melbourne, 40 West Coast Eagles) - Brownlow Medallist 1983, runner up 1982 – North Melbourne Fairest & Best 1982, 1983 - Inaugural captain of the West Coast Eagles, leading West Coast goalkicker 1987, 1988 – Kicked 327 goals. He is a member of the West Australian & Australian Football Hall of Fame.



BILL WALKER (Swan Districts)

Created his reputation as a champion rover during a 305 game career with Swan Districts between 1961 and 1976 - Sandover Medallist 1965, 1966, 1967, 1970 - Swan Districts' Fairest & Best 1965, 1966, 1968, 1969, 1970 - Swan Districts Premiership player 1961-1963 – 21 State games for Western Australia – Swan Districts Captain/Coach 1969-1971 – Swan Districts Captain 1972-1975 – Simpson Medallist 1967 - He is a member of the AFL's Hall of Fame. He is a member of the West Australian & Australian Football Hall of Fame.



GLEN JAKOVICH (South Fremantle, West Coast Eagles)

Glen Jakovich has the unique distinction in 1990 of playing in the WA Teal Cup team, earning representation in the WAFL State team which played South Australia at Football Park and then was selected in the WA State of Origin team. While Jakovich made centre half back his own during the peak of a stellar senior career, it was at centre half forward that he made an impression in the formative years. 276 games - Club Champion 1993, 1994, 1995, 2000 - All-Australian 1994-1995 - West Coast Eagles Premiership player 1992, 1994 - West Coast Eagles player of the finals 1995, 1997 - West Coast Eagles Rookie of the Year 1991 - Runner-up South Fremantle Fairest & Best 1991. He is a member of the West Australian & Australian Football Hall of Fame.



BARRY CABLE (Perth, East Perth, North Melbourne)

Was a champion rover for Perth (225 games), North Melbourne (116 games) and East Perth (43 games) between 1962 and 1979 - 20 State games for Western Australia – 1 State game for Victoria – Perth Captain/Coach 1972-1973 - Sandover Medallist 1964, 1968, 1973 – Simpson Medallist 1966, 1967, 1968, 1969 – Perth Premiership player 1966-1968 – Perth Fairest & Best 1965-1969, 1971, 1973 – North Melbourne Fairest & Best 1970 – North Melbourne Premiership player 1975, 1977 – North Melbourne Coach 1982-1984 – West Coast Eagles Assistant Coach 1987-1989 - He is a member of the AFL's Hall of Fame.

Photos courtesy of Alan East

TALENT

WA STATE ACADEMY

The WA State Academy program is an elite football environment that focuses on individual player development. It is centred on the development of the person and their ability to contribute in a team environment.

The Academy is divided into two separate but closely aligned programs. The WA 16's State Academy is designed for players aged 16 and acts as the initial introduction to a state based elite football program. The WA 18's State Academy is the next phase of the Academy journey and caters for 17 and 18 year olds.

WA STATE ACADEMY - PHILOSOPHIES

- To select the most talented developing players available ie players who demonstrate the most distinct attributes to progress into WAFL senior football and / or AFL football;
- A year long commitment to academy members;
- A holistic approach to player development;
- Emphasise individual player development within a team context;
- Academy staff to work in partnership with WAFL staff to develop individual players;
- Involvement in the Academy does not automatically include participation in the NAB National Championships.

WA STATE ACADEMY - OBJECTIVES

- To create an environment that is enjoyable, positive and fosters individual learning styles;
- Contribute to the development of skills, physical attributes, football knowledge, personal growth and self esteem of all players;
- The Academy to be a key tool in the broader strategy of developing coaches;

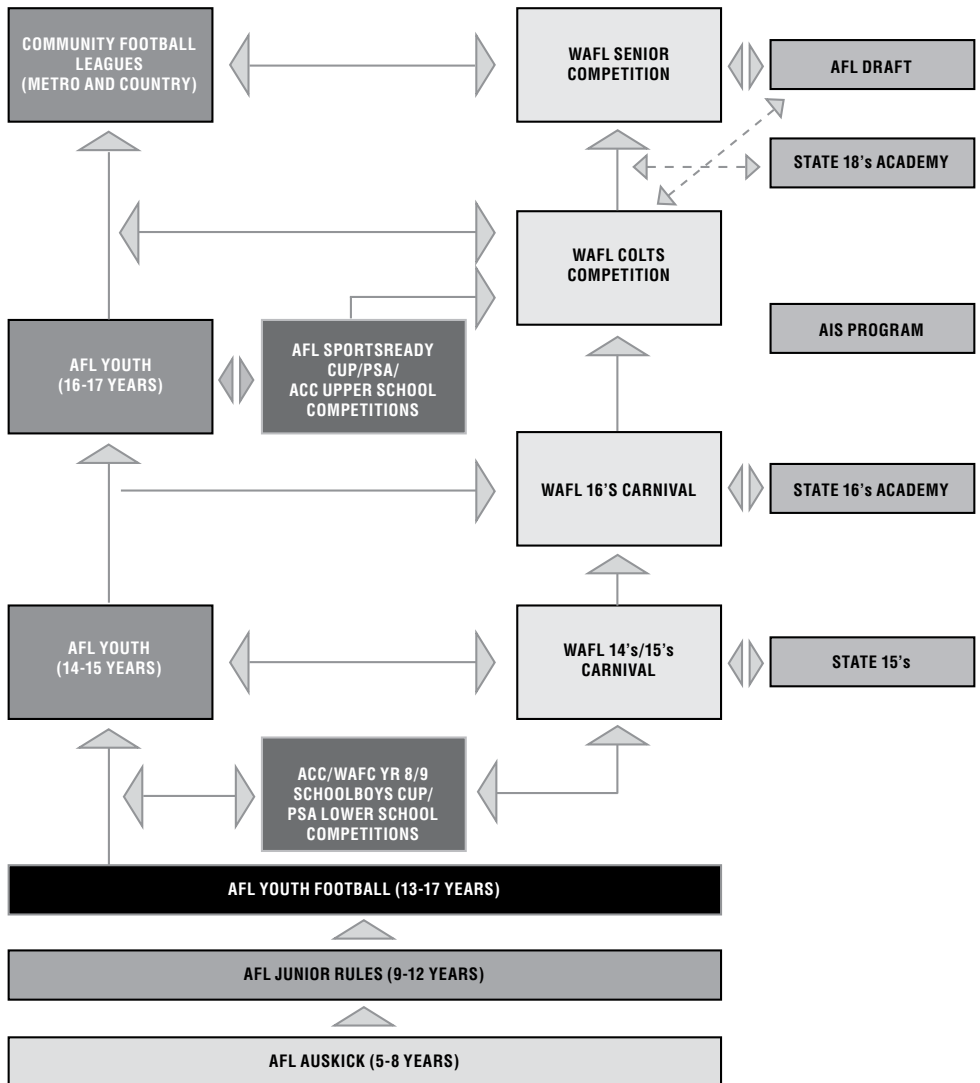
WA STATE ACADEMY – SELECTION PROCESS

- Nominations from WAFL clubs;
- Upon viewing the nominations and discussion with colts coaches and AFL Recruiting staff, State Academy selectors finalise composition of squad;
- The preferred pathway for all players is to be playing with their WAFL club;
- Selector's have the capacity to add players to the Academy as the season progresses;

TALENT IDENTIFICATION

- Providing a clear pathway to the top in a sport with limited international opportunity is vital to ensure the talented "natural" athlete selects Australian Football at an early age.
- The steps from junior mass participation to zone representation/opportunities at the 14's age level, leading to functional talent identification at intrastate and interstate competition from 15-18 clearly defined.
- The pinnacle opportunity for a junior Australian footballer for both optimal performance and identification is the National Championships conducted annually for players 16 and 18 years and under.
- The pathway leads from junior level to senior football via Country or State Leagues with the AFL as the clear destination for those wishing to achieve the ultimate. Players wishing to pursue an AFL career in WA must do so via the WAFL.
- Following is the career pathway for talented players:

WA MALE FOOTBALL PATHWAY



The above pathway is endorsed by the WAFC as the recommended progression for players playing football within Western Australia .

STATE REPRESENTATION GAMES

In reference to the NAB AFL Championships, State representation should be credited with local home and away games for their registered age group and team. This includes all competitions that hold a final series e.g. WAFL, District & Country.

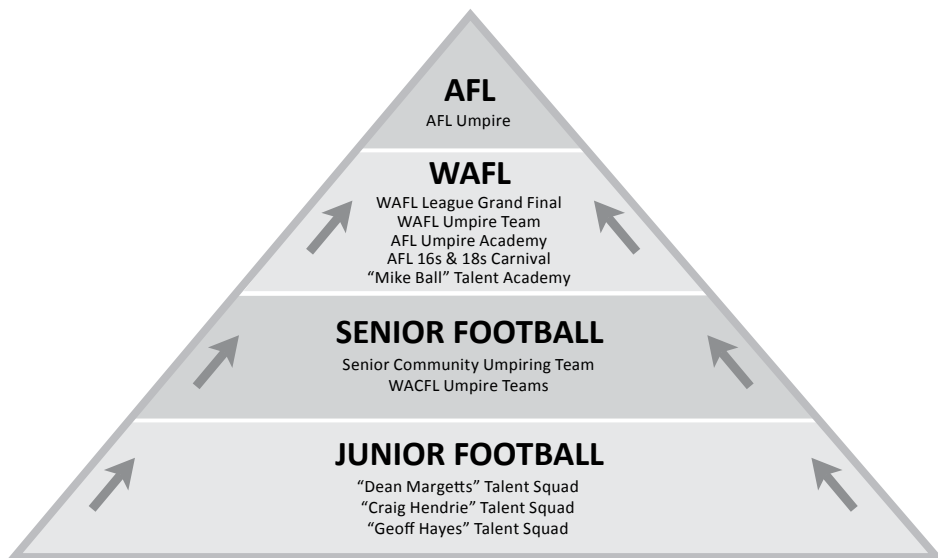
UMPIRING - GIVE UMPIRING A GO!

Umpiring teaches you 'life skills' such as tolerance, assertiveness, leadership and decision making.

Umpiring is a great way for both males and females to keep fit and involved in the game.

Umpiring allows you to earn money while servicing the game you love!!

Umpiring is a great opportunity. Do you have what it takes?



TO JOIN A JUNIOR UMPIRING GROUP, PLEASE GO TO: www.wafootball.com.au/umpiring/contacts

For further information contact WAFC Umpiring on 9381 5599



"It's a pretty obvious point, but every AFL umpire has to start somewhere... I started in juniors in 1996. I loved umpiring and the benefits that came with it from the first training night and the first game I umpired. It was a bit different though, at first, having the whistle on the fingers when I had been so used to just playing the game. But the knowledge and coaching I received at junior level gave me an outstanding foundation to allow me to perform as I do in the AFL competition today."

DEAN MARGETTS, AFL FIELD UMPIRE.

NOTES



NOTES

AFL SPORTSREADY

YOUR PARTNER IN EMPLOYMENT & TRAINING

AFL SportsReady is a not-for-profit National Group Training Company employing and mentoring trainees and apprentices towards a successful career pathway.



HOST EMPLOYERS AFL SportsReady offers:

- Free recruitment service
- Full network service from selection to completion
- It is cost effective - we take care of all paperwork!
- Over 16 years experience!



Principal: *Mr Paul Rafter* Trainee: *Jayde Harvey*
Host Employer: *Irene McCormack Catholic College*

"IMCC has engaged in the AFL SportReady program for five years and the benefits to the College have been immeasurable. The program offers a traineeship to former students from our own College or similar Colleges in our region.

This year's trainee, Jayde Harvey, continues to benefit from the practice of developing a wide range of on-the-job skills including event planning, facility/equipment management, sports coaching, Occupational Health & Safety, database entry and recreational adventure leadership.

Clearly Jayde has thrived on the staff mentoring she has received in the area of sport and recreation. Her hands-on experience in outdoor education camps, sporting carnivals, sports excursions and coaching of junior athletes will serve her well in future employment.

As part of her traineeship Jayde will complete a Certificate III in Sport & Recreation as well as gaining qualifications from St. John Ambulance, Surf Lifesaving Australia and Aust-Swim.

Jayde, like her predecessors, acts as a role model for current students and thereby assists in maintaining positive teacher-student relationships"

What is a Traineeship?

Traineeships are made up of two components:

- on the job experience
- accredited training with a Registered Training Organisation (RTO).

Traineeships provide young people with paid "hands-on" experience in the workforce as well as nationally accredited training at no cost to the Trainee!

Traineeships can be full time, part time or school based.

We offer traineeships in:

- Sport & Recreation
- Retail
- Administration
- Finance
- Marketing
- Horticulture
- Education/Schools

How do you apply for an AFL SportsReady Traineeship?

Visit our website
www.aflsportsready.com.au,
search the current job vacancies and
"apply online".

CONTACT AFL SPORTSREADY

Patersons Stadium, Gate 17, Roberts Road,
SUBIACO WA 6008
PO Box 275, SUBIACO WA 6904
phone: (08) 9287 5562
Colin.west@aflsportsready.com.au
www.aflsportsready.com.au



SPORTSREADY

COR RE MANTE
PALMA VIRTUTI

B