

# SENIOR HIGH SCHOOL COMPETITIONS HANDBOOK 2015



CO-ORDINATED BY THE WA FOOTBALL COMMISSION AND SCHOOL SPORT WA



# Suicide is preventable. There is help. There is hope.

One Life is the Western Australian initiative to strengthen families, communities and workplaces, and build resilience to prevent suicide.



## Need help?

**Lifeline 13 11 14**

**Beyondblue 1300 22 4636**

**Suicide Callback Service**

**1300 659 467**

**Mental Health Directory**

**[www.onelifewa.com.au](http://www.onelifewa.com.au)**

One Life are proud partners of the  
West Australian Football Commission



# WELCOME TO 2015

The West Australian Football Commission (WAFC) is committed to ensuring all West Australians have the opportunity to participate in our great indigenous game as a participant, official, coach or volunteer. 2015 will see approximately 20,000 students participate in inter-school competitions.

The WAFC, in conjunction with School Sport WA, are fortunate to have wonderful program partners Redimed, the West Coast Eagles and Fremantle Football Club. We thank them for their continued support of secondary school football.

The Game Development team at the WAFC looks forward to your continued enthusiasm for Australian Rules Football and hopes you and your students enjoy participating in the various football competitions on offer.

**Sharon Wilson**  
Education Manager

**Clayton Anderson**  
Schools Competitions Manager

## OUR SPONSORS

We would like to thank our sponsors.



## CONTENTS

|                                 |    |
|---------------------------------|----|
| SCHOOLBOYS REDIMED CUP          | 02 |
| FREO DOCKERS CUP                | 19 |
| EAGLES SCHOOLBOYS CUP           | 32 |
| WAFC DEVELOPMENT STAFF CONTACTS | 44 |
| SAFETY                          | 46 |
| OFFICIALS                       | 47 |
| CODES OF CONDUCT                | 48 |
| UMPIRES CODES OF CONDUCT        | 50 |
| INVESTIGATION PROCEDURES        | 58 |
| TALENT                          | 61 |
| UMPIRING                        | 64 |

# SCHOOLBOYS REDIMED CUP 2015



## DID YOU KNOW?

- Prior to 1988 only 22 government schools competed in inter-school football across the state
- In 2014 over 4,000 students from WA schools participated in the Schoolboys Redimed Cup
- Over the 25 years the competition has been running approximately 66,000 boys have participated

## CONTENTS

|  |    |
|--|----|
| Foreward                                     | 04 |
| Key Dates                                    | 04 |
| Competition Format                           | 05 |
| Regulations                                  | 06 |
| Barry Cable Division                         | 10 |
| Glen Jakovich Division                       | 11 |
| Ross Glendinning Division                    | 13 |
| The Legends                                  | 15 |
| 2014 Title Holders                           | 16 |
| Champion Schools                             | 17 |
| Secondary School Football Advisory Committee | 18 |



The 28th season of the Schoolboys Redimed Cup is about to begin. School Sport WA and the West Australian Football Commission have maintained a close partnership to deliver this quality competition and have continued the cooperative links between schools and the community.

The Schoolboys Redimed Cup offers a well-organised, efficient and high quality football competition. A competition of this size requires major support. On behalf of all participants and management, I thank the WAFC, School Sport WA and Redimed as our new program partner for 2015.

One feature of the Schoolboys Redimed Cup competition has been the opportunity to play the Cable Division Grand Final before an AFL fixture at Domain Stadium.

A special thank you to school staff who have taken on the roles of coaches, managers and support staff. I would also like to thank and acknowledge Barry Cable, Glen Jakovich, Ross Glendinning and Bill Walker for their continued patronage of the Schoolboys Redimed Cup competition.

Finally, I wish all teams a rewarding year in the Schoolboys Redimed Cup competition.

Alby Nuich

CHAIR, SECONDARY SCHOOLS FOOTBALL ADVISORY COMMITTEE

## 2015 SCHOOLBOYS REDIMED CUP TIMELINE

| DAY       | DATE           | EVENT  |
|-----------|----------------|--|
| Monday    | February 2     | Term 1 Commences / Online Nominations Open       |
| Monday    | March 2        | Nominations Close                                |
| Monday    | March 16       | Confirmation of Division / Draft Fixtures        |
| Friday    | March 27       | Final Fixtures Published                         |
| Thursday  | April 2        | End Term 1                                       |
| Monday    | April 20       | Term 2 Commences                                 |
| Wednesday | April 29       | Fixtures Commence                                |
| Monday    | June 30-July 3 | SHS Country Week Championships (Walker Division) |
| Friday    | July 3         | End Term 2 - Walker Division Grand Final         |
| Monday    | July 20        | Term 3 commences                                 |
| Thursday  | July 23        | Jakovich Division Grand Final - Steel Blue Oval  |
| Wednesday | July 29        | Cable Division Grand Final - East Fremantle Oval |

## COMPETITION FORMAT

- There are six metropolitan regions - North West, North East, South West, South East, Peel and ACC. Each region has divisions to cater for differing sizes or strengths of schools.
- There are 3 metropolitan divisions (Cable, Jakovich & Glendinning).
- **Secondary School Football Advisory Committee**, which is comprised of teachers and secondary School Football stakeholders.
- **The SSFAC reviews all nominations and reserves the right to change the division that a school may have nominated for to achieve a balanced competition across all divisions.**
- **Country Schools – All competitions will be coordinated by your Regional Football Development Manager. Schools will be advised of their allocated carnival date by Friday 2 April.**

**Barry Cable Division:** strong football schools seeking quality competition with games played across regions.

**Glen Jakovich Division:** schools of medium strength, seeking quality 'local' competition. Finals are played across regions.

**Ross Glendinning Division:** 15 a side competition specifically designed for schools entering the competition for the first time or schools with a limited football background. **There are no cross regional finals in this division.**

**Bill Walker Division:** only for schools who participate in 'A' section at SHS Country Week.

### REGION COORDINATORS – “Teachers are in Control”

Each Regional Coordinator will:

- arrange schools into appropriate divisions;
- set fixtures for that region;
- collate results after each round of fixtures;
- maintain a premiership table for each division;
- be a contact for all schools within that region for any queries; and
- email weekly match results to the WAFC for publication on the website;

**Our WAFC Umpire Coordinator coordinates all umpire appointments.**

### GAME DAYS – “Wednesday is Schoolboys Redimed Cup day”

Games will be played after school on WEDNESDAYS at 4pm or as close to this time as possible. **CHANGES TO GAME TIME / MATCH DAY SHOULD BE COORDINATED BETWEEN SCHOOLS ONLY AFTER NOTIFYING BOTH THE REGION COORDINATOR AND UMPIRE COORDINATOR.**

### LENGTH OF COMPETITION

The first games will be played on **Wednesday 29 April May**. The number of games will depend largely upon the number of schools in each Division. Schools are asked to check their exam timetable before nominating to ensure there are no obvious clashes between fixtures and upper school exams.

### FINALS

All minor finals will be completed by the end of Term 2.

- **Jakovich Division Grand Final will be played on Thursday 23 July at Steel Blue Oval**
- **Cable Division Grand Final will be played on Wednesday 29 July at East Fremantle Oval**

**ALL SCHOOLS MUST SUBMIT A FULL TEAM LIST PRIOR TO THE COMMENCEMENT OF FINALS TO THEIR REGION COORDINATOR.**

### FIXTURES / RESULTS / LADDERS

Rankings for finals are determined by the following:

1. Points
2. Previous match results between teams with equal points
3. Percentage

## REGULATIONS

### 1. GROUNDS

Games are to be played at the home schools nominated oval. Where a school has nominated a junior football club oval or council oval as its home ground, it is that school's responsibility to ensure that the ground is ready for each home game, and liaise with the respective club or council accordingly.

Ovals for Youth age matches can range between 135m to 185m in length and 110m to 155m in width. **Goal and behind posts must be padded. Cricket pitches are to be covered. It is mandatory that the home team be responsible for goal post padding so that both goal and behind posts are covered. A game will not proceed where any posts and cricket pitches are uncovered (It is recommended the away team still brings goal post padding to games).**

Home teams are responsible for all ground markings – centre and goal squares and boundary line. Visiting schools need to inspect the oval prior to the commencement of the game to make sure it is suitable to proceed. Any concerns should be highlighted to the Central Umpire prior to play commencing. The Central Umpire will have the final say as to whether the game will proceed. **It is recommended that all schools use the WAFC endorsed JLT match day checklist. JLT match day checklists can be obtained from Schools Competitions Manager Clayton Anderson [canderson@wafc.com.au](mailto:canderson@wafc.com.au).**

### 2. SAFETY

Spectators are to be kept from the boundary line and goal areas. Control of spectators is the responsibility of the competing schools. **Schools must have a first aid kit including ice or ice packs, along with a stretcher at the game.** Access to mobile phone communication is mandatory. If a school has a nurse, their involvement both in training school sports trainers and/or being at the game should be encouraged.

Central Umpire/s are to check teams before each game for nails, earrings, necklaces, boots etc. Any item considered dangerous is to be removed.

### 3. PUBLIC LIABILITY

**The WAFC has arranged public Liability Insurance for a sum insured of \$20,000,000 to cover its legal liabilities. The WAFC expects each school involved in Australian Football programs to maintain public liability insurance to sufficiently cover its legal liabilities. At its own discretion each school may want to consider purchasing personal accident insurance to protect against claims for non-Medicare medical expenses arising from this Australian Football program or any other school program.**

### 4. OVERSEER

The overseer of all on and off field conduct is the team coaches. The conduct of this competition relies totally upon the attitude of the coach. Coaches are to report to the WAFC on any behaviour detrimental to the Codes of Conduct of the competition. Should a SSFAC member be in attendance at a fixture, that person will act as the game overseer. The Advisory Committee members have the right to remove any player in breach of the Code of Conduct from the field of play. They may also lodge a request to investigate any incident outside of the rules of the game.





## 5. CHANGE ROOMS

Change rooms are to be allocated by the home team if available. The cleaning up of these rooms and the ground is the responsibility of both teams.

## 6. TEAMS

|                       |   |
|-----------------------|---|
| Cable Division:       | 18 per team, minimum 12; maximum 7 reserves |
| Jakovich Division:    | 18 per team, minimum 12; maximum 7 reserves |
| Glendinning Division: | 15 per team, minimum 12; maximum 7 reserves |
| Walker Division:      | 18 per team, minimum 12; maximum 7 reserves |

**\*Where schools enter two or more teams, no player may play down after three games in the higher division. Furthermore, if the higher division team has a bye, all players who played in the higher division team the previous week, are ineligible to play in the lower division team in the week of that bye.**

## 7. RULES

Rules for all divisions are as per the Laws of Australian Football.

## 8. UNIFORMS

All teams are to be in uniform playing gear including:

- Numbered school jumpers
- Uniform football shorts
- Correct socks

## 9. STARTING TIMES AND DURATION OF MATCHES

All games must start at 4:00pm sharp and finish no later than 5:00pm. Games will be of two 25 minute halves, with no time on, with a five (5) minute interval at half time.

### Prior to the Game

The home team is to line up in the centre of the ground and wait for the away team to line up opposite. Players, coaches and umpires are to shake hands, both before and after the game.

### At the Completion of the Game

The two coaches are to bring teams together to make any appropriate comments and to complete the match report. The Umpires are requested to participate. **THE COMPLETED MATCH REPORT IS TO BE FAXED / EMAILED TO YOUR DIVISION COORDINATOR BY THE HOME TEAM.**

## 10. CONDITIONS OF PLAY

Every endeavour must be made to ensure games are played at the fixtured time and place. If a team forfeits a match or if conditions are not met, a 10-goal win will be awarded to the non-offending team, plus six premiership points. The offending team will be invoiced for any umpiring costs incurred.

***In the circumstances where an umpire does not arrive, the game must be played, with umpiring arrangements made to the mutual satisfaction of both teams.***

## 11. Schoolboys Redimed Cup Game Points

Team is awarded 4 points for a win, 2 for a draw and zero for a loss. The umpire can award an additional 2 Behaviour points for each team, regardless of the result. Therefore, the maximum total points a team can earn is 6 (i.e. 4 points for a win plus 2 behaviour points awarded by the umpire). A losing team is still eligible to earn 2 behaviour points from the umpire. If a player is 'sent off' for a Red Card offence, behaviour points will be automatically deducted. An umpire may also deduct behaviour points for general poor behaviour, yellow card offences, coach or support staff conduct, etc. In the case of any deduction of behaviour points, the umpire must list the reason on the match report. In discussion with the match Umpire, the Regional Coordinator has the final decision to either uphold or overturn any deduction of behaviour points.

***If a winning teams margin exceeds 10 goals the team will only be credited with a maximum of 60 points (10 goals) winning margin (This does not apply in the Cable Division).***

## 12. AGE OF PLAYERS

Players must be full-time students at the school and under the age of 18 years as at 30 June in the year of play. **Students in Year 8 and 9 are not permitted to participate in the Schoolboys Redimed Cup. A lower school competition (Eagles Schoolboys Cup) exists to meet the needs of these students. Issues relating to liability rest squarely with the school. It is the schools responsibility to ensure that this rule is adhered to and schools are liable for any consequences of not doing so.**

## 13. MATCH BALL (SIZE 5 AFL STANDARD)

Each home team will provide the match ball. The away team is to provide a suitable spare football. The ball will be a WAFC agreed sponsored brand.



#### 14. DRAWN MATCHES

A draw will stand in home and away matches and two points will be awarded to each team, but not in finals. In finals 5 minutes each way will be played until a result is determined. If poor light or circumstances prevent play from continuing, the match shall be re-scheduled. In the event of a draw in a curtain raiser Grand Final in the Jakovich or Cable divisions, the game will be replayed at the first mutually available Wednesday after the drawn game.

A game will be deemed a final when it is an elimination game i.e. is not part of the regular weekly fixtures. A SSFAC member will make any decision on drawn games and in their absence the responsibility will fall on the Central Field Umpire(s). Refusal by any team to play 5 minutes each way will be deemed a **forfeit** on their behalf and the game will be awarded to the opposing side.

#### 15. PRIVACY POLICY

Team photographs or other images may be produced during the football season by the governing body (WAFC) and may be utilized for the promotion and development of football by the governing body. Completion and lodgement of the Nomination Form indicates acceptance of this policy.

#### 16. TRAVEL ASSISTANCE

To assist with travel costs a subsidy pool is available for disbursement at the conclusion of the competition, based on the total distance traveled by each school.

**Applications for travel assistance close on Friday 4 September.**



## BARRY CABLE DIVISION

| SCHOOL                       | GROUND             | COACH            | PHONE        | EMAIL                                |
|------------------------------|--------------------|------------------|--------------|--------------------------------------|
| CBC Fremantle                | Fremantle Park     | Jason Matthews   | 0413 262 530 | jasonma@cbcfremantle.wa.edu.au       |
| Clontarf Aboriginal College  | School Oval        | Robert Cole      | 0429 500 009 | rcole@clontarf.wa.edu.au             |
| Comet Bay College            | School Oval        | Nic Chidgzey     | 0410 566 759 | nicolas.chidgzey@education.wa.edu.au |
| Governor Stirling SHS        | Swan Athletic Oval | Andrew Davini    | 0423 211 042 | andrew.davini@education.wa.edu.au    |
| La Salle College             | School Oval        | Joe Sorgiovanni  | 0401 887 642 | jso@lasalle.wa.edu.au                |
| Mazenod College              | School Oval        | Jake Akmens      | 0421 194 637 | akmens.jacob@mazenod.wa.edu.au       |
| Newman College               | School Oval        | Matt Puljiz      | 0426 819 681 | puljiz@cathednet.wa.edu.au           |
| Sacred Heart College         | School Oval        | Barry Harrington | 0407 221 791 | harrington@sacredheart.wa.edu.au     |
| Darling Range Sports College | Reid Oval          | Shaun Clifford   | 0413 654 154 | shaun.clifford@education.wa.edu.au   |
| Mandurah Catholic College    | School Oval        | Scott Bennett    | 0439 958 871 | bennett.scott@cathednet.wa.edu.au    |
| Corpus Christi College       | School Oval        | Stephen Kingwell | 0439 903 992 | skingwell@corpus.wa.edu.au           |
| Warwick SHS                  | School Oval        | John Batten      | 0417 971 530 | john.batten1@education.wa.edu.au     |

**Region Coordinator: Ray Barrett - Lockridge SHS, 0412 687 585**  
**Results to be FAXED or EMAILED by the HOME TEAM before 10.30am on Thursday morning.**  
**Fax: 9279 2469 / Email: ray.barrett@education.wa.edu.au**

## GLEN JAKOVICH DIVISION - NORTH EAST

| SCHOOL                           | GROUND            | COACH              | PHONE        | EMAIL                                  |
|----------------------------------|-------------------|--------------------|--------------|--|
| Chisholm Catholic College        | Hillcrest Reserve | Andrew Glover      | 0412 029 773 | a.glover@chisholmcc.wa.edu.au          |
| Greenwood SHS                    | School Oval       | Brenden Guard      | 0407 146 187 | brenden.guard@education.wa.edu.au      |
| John Forrest SC                  | RA Cooke Reserve  | Reece Phoenix      | 0433 710 839 | reece.phoenix@education.wa.edu.au      |
| John Septimus Roe                | School Oval       | Ryan Clarke        | 0438 864 485 | rclarke@jsracs.wa.edu.au               |
| Aranmore Catholic College        | AWAY GAMES ONLY   | Craig Thomas       | 0417 912 226 | c.thomas@aranmore.wa.edu.au            |
| WA College of Agric. - Cunderdin | AWAY GAMES ONLY   | Paul Jasper        | 0417 353 246 | paul.jasper@education.wa.edu.au        |
| Servite College                  | Grenville Reserve | Ryan Redfern       | 0417 972 314 | redfern.ryan@servite.wa.edu.au         |
| Mt Lawley SHS                    | Hamer Park        | Andrew Ruck        | 0421 026 416 | andrew.ruck@lawley.wa.edu.au           |
| Hampton Senior High School       | Jubilee Reserve   | Justin Cruickshank | 0416 633 337 | justin.cruickshank@education.wa.edu.au |
| Girrawheen SHS                   | School Oval       | Wayne Young        | 0448 855 532 | wayne.young@education.wa.edu.au        |
| Woodvale SC                      | School Oval       | Luke Hendricks     | 0452 209 456 | luke.hendricks@education.wa.edu.au     |

**Region Coordinator: Joe Sorgiovanni - La Salle College, 0401 887 642**  
**Results to be FAXED or EMAILED by the HOME TEAM before 10.30am on Thursday morning.**  
**Fax: 9274 4085 / Email: [jso@lasalle.wa.edu.au](mailto:jso@lasalle.wa.edu.au)**

## GLEN JAKOVICH DIVISION - NORTH WEST

| SCHOOL                        | GROUND               | COACH           | PHONE        | EMAIL                               |
|-------------------------------|----------------------|-----------------|--------------|-------------------------------------|
| Churchlands SHS               | AWAY GAMES ONLY      | Dave Bongiascia | 0402 693 411 | dbongiascia@churchlands.wa.edu.au   |
| Carine SHS                    | Percy Doyle Reserve  | Scott Underwood | 0422 533 664 | scott.underwood@education.wa.edu.au |
| Irene McCormack               | School Oval          | Ken Dillon      | 0403 775 069 | dillon.ken@imcc.wa.edu.au           |
| John XX111 College            | School Oval          | Darren Kowal    | 0403 574 817 | kowal.darren@johnxxiii.wa.edu.au    |
| Mater Dei College             | School Oval          | Wayne Keady     | 0494 054 777 | wayne.keady@mdc.wa.edu.au           |
| Prendiville Catholic College  | School Oval          | Steve Lynch     | 0417 938 278 | slynch@prendiville.wa.edu.au        |
| Shenton College               | School Oval          | Sam Miles       | 0433 685 529 | sam.miles@education.wa.edu.au       |
| St Mark's ACS                 | School Oval          | Royd Aisbett    | 0402 217 734 | raisbett@stmarks.wa.edu.au          |
| St Stephen's - Duncraig       | Percy Doyle Reserve  | Damon Eaton     | 0429 933 478 | bryce.mclean@ststephens.wa.edu.au   |
| St Stephen' School - Carramar | School Oval          | Adam Dwyer      | 0402 944 657 | adam.dwyer@ststephens.wa.edu.au     |
| Wanneroo SC                   | Wanneroo Showgrounds | Tom Moscarda    | 0439 644 845 | thomas.moscarda@education.wa.edu.au |
| Lake Joondalup BC             | Arena Joondalup      | Jacob Miolin    | 0406 266 827 | mioj@ljbic.wa.edu.au                |

**Region Coordinator: Justin Burt - John Forrest SC, 0413 510 912**  
**Results to be FAXED or EMAILED by the HOME TEAM before 10.30am on Thursday morning.**  
**Fax: 9272 6504 / Email: [justin.burt@education.wa.edu.au](mailto:justin.burt@education.wa.edu.au)**

## GLEN JAKOVICH DIVISION - SOUTH EAST

| SCHOOL                         | GROUND           | COACH          | PHONE        | EMAIL                              |
|--------------------------------|------------------|----------------|--------------|------------------------------------|
| Clontarf Aboriginal College 2  | School Oval      | Con Regan      | 0499 590 005 | cregan@clontarf.wa.edu.au          |
| Darling Range Sports College 2 | School Oval      | Shaun Clifford | 0413 654 154 | shaun.clifford@education.wa.edu.au |
| Kelmscott SHS                  | John Dunne Oval  | Glen Batten    | 0414 735 395 | glen.batten@education.wa.edu.au    |
| Cecil Andrews SHS              | School Oval      | Jeremy Bruse   | 0416 025 999 | jeremy.bruse@education.wa.edu.au   |
| Sevenoaks Senior College       | Queens Park Oval | Brad Cox       | 0488 757 666 | bradley.cox2@education.wa.edu.au   |
| Lumen Christi College          | School Oval      | Ben Shaw       | 0412 546 853 | shaw.ben@lumen.wa.edu.au           |
| Mazenod College 2              | School Oval      | Beau Hemley    | 0409 990 221 | hemley.beau@Mazenod.wa.edu.au      |
| Lynwood SHS                    | Ferndale Oval    | Wayne McNamara | 0432 955 925 | wayne.mcnamara@education.wa.edu.au |

**Region Coordinator: Greg Maynard - Darling Range Sports College, 0402 979 545**  
**Results to be EMAILED by the HOME TEAM before 10.30am on Thursday morning.**  
**Email: greg.maynard@education.wa.edu.au**

## GLEN JAKOVICH DIVISION - SOUTH WEST

| SCHOOL                    | GROUND           | COACH           | PHONE        | EMAIL                                  |
|---------------------------|------------------|-----------------|--------------|--|
| Willetton SHS             | AWAY GAMES ONLY  | Wayne Baseden   | 0419 944 546 | steve.atterton@education.wa.edu.au     |
| Emmanuel Catholic College | School Oval      | Steve Pendleton | 0417 968 765 | pendleton.steve@cathednet.wa.edu.au    |
| Seton Catholic College    | AWAY GAMES ONLY  | Mark McGough    | 0408 544 153 | mmcgough@seton.wa.edu.au               |
| Canning Vale College      | School Oval      | Jamie Connelly  | 0425 843 061 | jamie.connelly2@education.wa.edu.au    |
| Hamilton SHS              | Davilak Oval     | Chris Davies    | 0430 050 751 | christopher.davies@education.wa.edu.au |
| Leeming SHS               | Peter Ellis Oval | Shane Ellis     | 0407 083 251 | shane.ellis@education.wa.edu.au        |

**Region Coordinator: Matthew Hayes, 0434 363 714**  
**Results to be EMAILED or FAXED by the HOME TEAM before 10.30am on Thursday morning.**  
**Fax: 9434 3662 / Email: Matthew.Hayes@dssr.wa.gov.au**

## GLEN JAKOVICH DIVISION - ACC

| SCHOOL                  | GROUND                  | COACH          | PHONE        | EMAIL                              |
|-------------------------|-------------------------|----------------|--------------|------------------------------------|
| All Saints College      | School Oval             | Oliver Beath   | 0411 018 939 | oliver.beath@allsaints.wa.edu.au   |
| Carey Baptist College   | School Oval             | Jackson Norton | 0430 367 376 | jnorton@carey.wa.edu.au            |
| John Wollaston ACS      | School Oval             | Wayd Blakiston | 0437 437 112 | blakiston.wayd@cathednet.wa.edu.au |
| Ursula Frayne           | Higgins Reserve         | Jason Bradley  | 0408 678 402 | bradley.jason@cathednet.wa.edu.au  |
| Kennedy Baptist College | Murdoch Uni Sports Oval | Tim Basile     | 0422 406 058 | tbasile@kennedy.wa.edu.au          |

**Region Coordinator: Oliver Beath, 0411 018 939**  
**Results to be EMAILED by the HOME TEAM before 10.30am on Thursday morning.**  
**Email: oliver.beath@allsaints.wa.edu.au**

## GLEN JAKOVICH DIVISION - PEEL

| SCHOOL                         | GROUND                | COACH           | PHONE        | EMAIL                               |
|--------------------------------|-----------------------|-----------------|--------------|-------------------------------------|
| Frederick Irwin                | School Oval           | Sheldon Migel   | 0424 153 165 | miguels@fias.wa.edu.au              |
| Kolbe Catholic College         | School Oval           | Michael McCann  | 0438 994 259 | m.mccann@kolbe.wa.edu.au            |
| Pinjarra SHS                   | Sir Ross McLarty Oval | Paul Galloway   | 0428 311 976 | paul.galloway@education.wa.edu.au   |
| Halls Head College             | Peelwood Parade       | Neil Taylor     | 0407 645 367 | neil.taylor@education.wa.edu.au     |
| Coodanup Community College     | School Oval           | Craig Callaghan | 0417 973 939 | craig.callaghan@education.wa.edu.au |
| Living Waters Lutheran College | Warnbro Oval          | Josh Ainsworth  | 0430 595 216 | jainsworth@livingwaters.wa.edu.au   |

**Region Coordinator: Paul Galloway - Pinjarra SHS, 0428 311 976**  
**Results to be FAXED or EMAILED by the HOME TEAM before 10.30am on Thursday morning.**  
**Fax: 9531 1991 / Email: paul.galloway@education.wa.edu.au**

## ROSS GLENDINNING DIVISION - NORTH

| SCHOOL                      | GROUND          | COACH           | PHONE        | EMAIL                                 |
|-----------------------------|-----------------|-----------------|--------------|---------------------------------------|
| Ballajura Community College | School Oval     | Daniel Holt     | 0420 858 428 | daniel.holt@education.wa.edu.au       |
| Mercy College               | School Oval     | Albert Borrello | 0419 098 307 | borrello.albert@cathednet.wa.edu.au   |
| Balga SHS                   | School Oval     | Brad Stevenosn  | 0431 920 950 | bradley.stevenson@education.wa.edu.au |
| Morely Senior High School   | School Oval     | Mark Selfe      | 0458 201 499 | mark.selfe@education.edu.au           |
| Perth Modern School         | AWAY GAMES ONLY | Scott Marshall  | 0450 743 026 | scott.marshall@education.wa.edu.au    |
| Helena College              | School Oval     | Joe Kendall     | 0415 797 912 | jkendall@helena.wa.edu.au             |
| Swan Valley ACS             | School Oval     | Carl Scarfone   | 0422 040 591 | carl.scarfone@svacs.wa.edu.au         |

**Region Coordinator: Reece Phoenix, John Forrest SC – 0433 710 839**  
**Results to be FAXED or EMAILED by the HOME TEAM before 10.30am on Thursday morning.**  
**Fax: 9272 6504 / Email: reece.phoenix@education.wa.edu.au**



## ROSS GLENDINNING DIVISION - SOUTH

| SCHOOL                               | GROUND            | COACH          | PHONE        | EMAIL                                |
|--------------------------------------|-------------------|----------------|--------------|--------------------------------------|
| Dale Christian School                | Gwynn Park        | Yani Lotsos    | 0412 731 604 | lotsosy@dalecs.wa.edu.au             |
| Lesmurdie SHS                        | School Oval       | John Armstrong | 0439 925 890 | john.armstrong@education.wa.edu.au   |
| Thornlie SHS                         | Berehaven Reserve | Rod Firth      | 0409 370 122 | rodney.firth@education.wa.edu.au     |
| Melville SHS                         | Winnacott Reserve | Clint Gardiner | 0423 098 683 | clinton.gardiner@education.wa.edu.au |
| St Norbert College                   | Queens Park Oval  | Mark Pavey     | 0429 881 490 | mpavy@norbert.wa.edu.au              |
| Serpentine-Jarrahdale Grammar School | School Oval       | James Bristow  | 0403 710 405 | jbristow@sjs.wa.edu.au               |

Region Coordinator: Jeremy Bruce - Cecil Andrews SHS, 0416 025 999  
 Results to be FAXED or EMAILED by the HOME TEAM before 10.30am on Thursday morning.  
 Fax: 9497 1715 / Email: jeremy.bruce@education.wa.edu.au



## THE LEGENDS



### **ROSS GLENDINNING (East Perth, North Melbourne, West Coast Eagles)**

A superb key position player, Glendinning established an Australia-wide reputation for excellence as a key defender and forward. 286 games (56 East Perth, 190 North Melbourne, 40 West Coast Eagles) - Brownlow Medallist 1983, runner up 1982 – North Melbourne Fairest & Best 1982, 1983 - Inaugural captain of the West Coast Eagles, leading West Coast goalkicker 1987, 1988 – Kicked 327 goals. He is a member of the West Australian & Australian Football Halls of Fame.



### **BILL WALKER (Swan Districts)**

Bill created his reputation as a champion rover during a 305 game career with Swan Districts between 1961 and 1976 - Sandover Medallist 1965, 1966, 1967, 1970 - Swan Districts' Fairest & Best 1965, 1966, 1968, 1969, 1970 - Swan Districts Premiership player 1961-1963 – 21 State games for Western Australia – Swan Districts Captain/Coach 1969-1971 – Swan Districts Captain 1972-1975 – Simpson Medallist 1967 - He is a member of the AFL's Hall of Fame, the West Australian & Australian Football Halls of Fame.



### **GLEN JAKOVICH (South Fremantle, West Coast Eagles)**

In 1990 Glen Jakovich had the unique distinction of playing in the WA Teal Cup team, earning representation in the WAFL State team which played South Australia at Football Park and then was selected in the WA State of Origin team. While Jakovich made centre half back his own during the peak of a stellar senior career, it was at centre half forward that he made an impression in the formative years. 276 games - Club Champion 1993, 1994, 1995, 2000 - All-Australian 1994-1995 - West Coast Eagles Premiership player 1992, 1994 - West Coast Eagles player of the finals 1995, 1997 - West Coast Eagles Rookie of the Year 1991 - Runner-up South Fremantle Fairest & Best 1991. He is a member of the West Australian & Australian Football Halls of Fame.



### **BARRY CABLE (Perth, East Perth, North Melbourne)**

A champion rover for Perth (225 games), North Melbourne (116 games) and East Perth (43 games) between 1962 and 1979 - 20 State games for Western Australia – 1 State game for Victoria – Perth Captain/Coach 1972-1973 - Sandover Medallist 1964, 1968, 1973 – Simpson Medallist 1966, 1967, 1968, 1969 – Perth Premiership player 1966-1968 – Perth Fairest & Best 1965-1969, 1971, 1973 – North Melbourne Fairest & Best 1970 – North Melbourne Premiership player 1975, 1977 – North Melbourne Coach 1982-1984 – West Coast Eagles Assistant Coach 1987-1989 - He is a member of the AFL's Hall of Fame.

*Photos courtesy of Alan East*

## 2014 WINNERS

In the 27th year of the competition, these schools were victorious in their respective divisions.



**BARRY CABLE DIVISION**  
*Darling Range Sports College*



**GLEN JAKOVICH DIVISION**  
*Warwick Senior High School*



**BILL WALKER DIVISION**  
*Great Southern Grammar School*

## CHAMPION SCHOOLS

|      | Cable Division                                 | Jakovich Division            | Walker Division          | Glendinning Division  |
|------|--|------------------------------|--------------------------|-----------------------|
| 1988 | Hamilton SHS                                   | Eastern Hills SHS            | N/A                      | N/A                   |
| 1989 | Hamilton SHS                                   | Governor Stirling SHS        | N/A                      | N/A                   |
| 1990 | Warwick SHS                                    | La Salle College             | Busselton SHS            | N/A                   |
| 1991 | Wesley College                                 | Willetton SHS                | Albany SHS               | North Lake SHS        |
| 1992 | Newman College                                 | Kent St SHS                  | Narrogin SHS             | Thornlie SHS          |
| 1993 | Newman College                                 | Corpus Christi College       | Narrogin SHS             | John Curtin SHS       |
| 1994 | Corpus Christi College                         | Mount Lawley SHS             | Narrogin SHS             | Cecil Andrews SHS     |
| 1995 | Corpus Christi College                         | John XXII College            | Narrogin Ag. College     | CBC Fremantle         |
| 1996 | Corpus Christi College                         | Lynwood SHS                  | Narrogin Ag. College     | Cecil Andrews SHS     |
| 1997 | Mazenod College                                | Lockridge SHS                | Narrogin SHS             | Clontarf AC           |
| 1998 | Mazenod College                                | Rossmoyne SHS                | Narrogin Ag. College     | Maddington SHS        |
| 1999 | Governor Stirling SHS                          | Hamilton SHS                 | Narrogin SHS             | Clontarf AC           |
| 2000 | Clontarf Aboriginal College                    | Prendiville Catholic College | Geraldton Senior College | Craigie SHS           |
| 2001 | Clontarf Aboriginal College                    | John XXIII College           | Cunderdin Ag. College    | Clontarf AC           |
| 2002 | Carine SHS                                     | Clontarf Aboriginal College  | Manjimup SHS             | Leeming SHS           |
| 2003 | Clontarf Aboriginal College                    | Mandurah Senior College      | Manjimup SHS             | Winthrop BC           |
| 2004 | Clontarf Aboriginal College<br>Mazenod College | Winthrop Baptist College     | Geraldton SC             | Leeming SHS           |
| 2005 | Clontarf Aboriginal College                    | Sacred Heart College         | Geraldton SC             | John Forrest SHS      |
| 2006 | Clontarf Aboriginal College                    | Willetton SHS                | Mandurah SC              | St Stephens Dun Craig |
| 2007 | Clontarf Aboriginal College                    | CBC Fremantle                | Newton Moore SHS         | N/A                   |
| 2008 | Sacred Heart College                           | CBC Fremantle                | Pinjarra SHS             | N/A                   |
| 2009 | Mandurah Senior College                        | La Salle College             | Mandurah Senior College  | N/A                   |
| 2010 | Governor Stirling SHS                          | Carine SHS                   | Albany SHS               | N/A                   |
| 2011 | CBC Fremantle                                  | Winthrop Baptist College     | Albany SHS               | N/A                   |
| 2012 | Clontarf Aboriginal College                    | Mandurah Catholic College    | Albany SHS               | N/A                   |
| 2013 | Clontarf Aboriginal College                    | Corpus Christi College       | Newton Moore SHS         | N/A                   |
| 2014 | Darling Range Sports College                   | Warwick SHS                  | Great Southern GS        | N/A                   |

## SECONDARY SCHOOL FOOTBALL ADVISORY COMMITTEE

| Name                        | Position                     | Phone        | Email                             |
|-----------------------------|------------------------------|--------------|-----------------------------------|
| Alby Nuich                  | Chairman                     | 0409 086 231 | aandnuich@bigpond.com             |
| Clayton Anderson            | Schools Competitions Manager | 0408 836 689 | canderson@wafc.com.au             |
| Peter Smith                 | Director of Sport: SSWA      | 0409 114 422 | peter.r.smith@education.wa.edu.au |
| <b>Region Coordinators:</b> |                              |              |                                   |
| Ray Barrett                 | Cable Division               | 0412 687 585 | ray.barrett@education.wa.edu.au   |
| Joe Sorgiovanni             | NE Jakovich                  | 0401 887 642 | jso@lasalle.wa.edu.au             |
| Justin Burt                 | NW Jakovich                  | 0407 448 614 | justin.burt@education.wa.edu.au   |
| Greg Maynard                | SE Jakovich                  | 0402 979 545 | greg.maynard@education.wa.edu.au  |
| Matt Hayes                  | SW Jakovich                  | 0434 363 714 | matthew.hayes@dsr.wa.gov.au       |
| Paul Galloway               | Peel Jakovich                | 0428 311 976 | paul.galloway@education.wa.edu.au |
| Reece Phoenix               | Glendinning - North          | 0433 710 839 | reece.phoenix@education.wa.edu.au |
| Jeremy Bruse                | Glendinning - South          | 0416 025 999 | jeremy.bruse@education.wa.edu.au  |
| Dean Margetts               | Umpires Coordinator          | 9381 5599    | dmargetts@wafc.com.au             |



# FREO DOCKERS CUP 2015



## DID YOU KNOW?

- In 2014 over 165,000 females nationally participated in a structured competition
- Over 2,000 students from around WA participated in the 2014 Freo Dockers Cup

## CONTENTS

|                                |    |                                       |    |
|--------------------------------|----|---------------------------------------|----|
| Freo Dockers Cup 2015          | 21 | Year 8/9 Freo Dockers Cup             | 29 |
| Freo Dockers Cup 2015 Timeline | 22 | Female Football Outside School        | 29 |
| Competition Format             | 22 | Female High Performance Opportunities | 29 |
| Regulations                    | 24 | 2014 Title Holders                    | 30 |
| Moore Division                 | 27 | Champion Schools                      | 31 |
| White Division                 | 27 | Schoolgirls Committee                 | 31 |





## **FREO DOCKERS CUP 2015**

### **WHY HAVE A YOUTH GIRLS' SECONDARY SCHOOLS COMPETITION?**

The main aim of the secondary girl's competition is to provide a wide range of experiences to girls, who would not otherwise have the chance to be involved in Australian Rules Football. Participation in school competitions is an important step in girls becoming involved in the senior women's football competition. The Girls' football competition was established in 1996 with the aims to:

- Provide an alternative sport for girls
- Promote girls in sport
- Promote a healthy lifestyle
- Enhance school / community links
- Play with your peers
- Build school pride

### **SCHOOLGIRLS' CUP COMMITTEE:**

The competition has representatives from:

- Government and Non-Government Schools
- Western Australian Football Commission
- School Sport WA / Associated & Catholic Colleges of WA

This Committee's charter is to promote and administer the 'Freo Dockers Cup' competition, its regulations, rules and format. The Committee provides a forum for discussion and debate on issues relating to the competition and youth girls football development. We welcome the Fremantle Football Club as our major partner for the Freo Dockers Cup.

## 2015 FREQ DOCKERS CUP TIMELINE

| DAY      | DATE       | EVENT   |
|----------|------------|---|
| Monday   | February 2 | Term 1 Commences / Online Nominations Open    |
| Monday   | March 9    | Nominations Close                             |
| Monday   | March 16   | Confirmation of Division / Draft Fixtures     |
| Friday   | March 27   | Final Fixtures Published                      |
| Thursday | April 2    | End Term 1                                    |
| Monday   | April 20   | Term 2 Commences                              |
| Tuesday  | April 28   | Fixtures Commence                             |
| Tuesday  | June 16-23 | Moore / White Division Finals commence        |
| Sunday   | June 28    | Moore / White Division Grand Finals           |
| Friday   | July 3     | End Term 2 – Vanderweide Division Grand Final |
| Monday   | July 20    | Term 3 commences                              |

## COMPETITION FORMAT

- There are four metropolitan regions - North West, North East, South and Peel
- The Freq Dockers Cup runs across 2 metropolitan divisions (Moore & White)
- ***The Schoolgirls Committee reviews all nominations and reserves the right to change the division that a school may have nominated for to achieve a balanced competition across all divisions***
- ***Regional Schools – All competitions will be coordinated by your WAFC Football Development Manager Schools will be advised of their allocated carnival date by the end of Term 1***

**Moore Division:** strong football schools seeking quality competition with games played across regions.

**White Division:** schools of medium strength, seeking quality 'local' competition. Finals are played across regions.

**Vander Weide Division:** only for schools who participate at SHS Country Week.





## 1. REGION COORDINATORS – “Teachers are in Control”

Each regional Coordinator will:

- arrange schools into appropriate divisions;
- set fixtures for that region;
- collate results after each round of fixtures;
- maintain a premiership table for each division;
- be a contact for all schools within that region for any queries; and
- email weekly match results to the WAFC for publication on the website;

**Our WAFC Umpire Coordinator coordinates all umpire appointments.**

## 2. GAME DAYS

Games will be played after school on Tuesdays at 4pm or as close to this time as possible. **CHANGES TO GAME TIME / MATCH DAY SHOULD BE COORDINATED BETWEEN SCHOOLS ONLY AFTER NOTIFYING BOTH THE REGION COORDINATOR AND UMPIRE COORDINATOR.**

## 3. LENGTH OF COMPETITION

The **first games will be played on Tuesday April 28**. The number of games will depend largely upon the number of schools in each Division. Schools are asked to check their exam timetable before nominating to ensure there are no obvious clashes between fixtures and upper school exams.

## 4. FINALS

**The Moore and White Division Grand Finals will be played on Sunday June 28 at Hammer Park.**

### Moore Division

23 June - Semi Finals

A 1v4, B 2v3, Based on points then percentage after 7 home and away games, 1 & 2 host games.

28 June - Grand Final 10.30am at Hammer Park

### White Division

16 June - Quarter Finals

23 June - Semi Finals

Winner North East v Winner North West – venue TBA

Winner Peel v Winner South – venue TBA

28 June - Grand Final 9.30am at Hammer Park

**ALL SCHOOLS MUST SUBMIT A FULL TEAM LIST PRIOR TO THE COMMENCEMENT OF FINALS TO THEIR REGION COORDINATOR.**

## 5. FIXTURES / RESULTS / LADDERS

Details for all regions / divisions can be viewed via the WA Football website –

[www.wafootball.com.au](http://www.wafootball.com.au) / School Football / Fixtures & Results

## REGULATIONS

### 1. GROUNDS

Games are to be played at the home schools nominated oval. Where a school has nominated a junior football club oval or council oval as its home ground, it is that school's responsibility to ensure that the ground is ready for each home game, and liaise with the respective club or council accordingly.

Ovals for Youth age matches can range between 135m to 185m in length and 110m to 155m in width. **Goal and behind posts must be padded. Cricket pitches are to be covered. It is mandatory that the home team be responsible for goal post padding so that both goal and behind posts are covered. A game will not proceed where any posts and cricket pitches are uncovered (It is recommended the away team still brings goal post padding to games).**

Home teams are responsible for all ground markings – centre and goal squares and boundary line. Visiting schools need to inspect the oval prior to the commencement of the game to make sure it is suitable to proceed. Any concerns should be highlighted to the Central Umpire prior to play commencing. The Central Umpire will have the final say as to whether the game will proceed. **It is recommended that all schools use the WAFC endorsed JLT match day checklist. JLT match day checklists can be obtained from Schools Competitions Manager Clayton Anderson [canderson@wafc.com.au](mailto:canderson@wafc.com.au).**

### 2. SAFETY

Spectators are to be kept from the boundary line and goal areas. Control of spectators is the responsibility of the competing schools. **Schools must have a first aid kit including ice or ice packs, along with a stretcher at the game.** Access to mobile phone communication is mandatory. If a school has a nurse, their involvement both in training school sports trainers and/or being at the game should be encouraged.

Central Umpire/s are to check teams before each game for nails, earrings, necklaces, boots etc. Any item considered dangerous is to be removed.

### 3. PUBLIC LIABILITY

**The WAFC has arranged public Liability Insurance for a sum insured of \$20,000,000 to cover its legal liabilities. The WAFC expects each school involved in Australian Football programs to maintain public liability insurance to sufficiently cover its legal liabilities. At its own discretion each school may want to consider purchasing personal accident insurance to protect against claims for non-Medicare medical expenses arising from this Australian Football program or any other school program.**

### 4. OVERSEER

The overseer of all on and off field conduct is the team coaches. The conduct of this competition relies totally upon the attitude of the coach. Coaches are to report to the WAFC on any behaviour detrimental to the Codes of Conduct of the competition. Should a SSFAC member be in attendance at a fixture, that person will act as the game overseer. The Advisory Committee members have the right to remove any player in breach of the Code of Conduct from the field of play. They may also lodge a request to investigate any incident outside of the rules of the game.

### 5. CHANGE ROOMS

Change rooms are to be allocated by the home team if available. The cleaning up of these rooms and the ground is the responsibility of both teams.



## 6. TEAMS

|                       |   |
|-----------------------|---|
| Moore Division:       | 18 per team, minimum 15; unlimited reserves |
| White Division:       | 15 per team, minimum 12; unlimited reserves |
| VanderWeide Division: | 15 per team, minimum 12; unlimited reserves |

**\*If both teams have more than 15 players (Moore Division 18 players), the game will be played with the least number of players that both teams have, up to a maximum of 18. If a team has less than 15, the other team plays with 15 players. There will be an unlimited interchange for all games, including finals.**

Where schools enter two or more teams, no player may play down after three games in the higher division. Furthermore, if the higher division team has a bye, all players who played in the higher division team the previous week, are ineligible to play in the lower division team in the week of that bye.

## 7. RULES

Rules for all divisions are as per Australian Football League Junior Policy Youth Girls Rules for 16 – 18 year old girls which is available from the WAFC.

## 8. UNIFORMS

All teams are to be in uniform playing gear including:

- Numbered school jumpers
- Uniform football shorts
- Correct socks

## 9. STARTING TIMES AND DURATION OF MATCHES

All games must start at 4:00pm sharp and finish no later than 5:00pm. Games will be of two 20 minute halves with no time on, with a five (5) minute interval at half time.

### Prior to the Game

The home team is to line up in the centre of the ground and wait for the away team to line up opposite. Players, coaches and umpires are to shake hands, both before and after the game.

### At the Completion of the Game

The two coaches are to bring teams together to make any appropriate comments and to complete the match report. The Umpires are requested to participate. **THE COMPLETED MATCH REPORT IS TO BE FAXED / EMAILED TO YOUR REGION COORDINATOR BY THE HOME TEAM.**

## 10. CONDITIONS OF PLAY

Every endeavour must be made to ensure games are played at the fixtured time and place. If a team forfeits a match or if conditions are not met, a 5 goal win will be awarded to the non-offending team, plus six premiership points. The offending team will be invoiced for any umpiring costs incurred.

***In the circumstances where an umpire does not arrive, the game must be played, with umpiring arrangements made to the mutual satisfaction of both teams.***

### 11. 'FREO DOCKERS CUP' GAME POINTS

The maximum points that a winning team can earn is 6 points (i.e. 4 points for a win plus 2 points for behaviour awarded by the umpires). The losing team can still earn 2 points for behaviour, however zero (0) points are awarded for a loss. Any player that is 'sent off' on a Red Card offence automatically loses their team's behaviour points (2 point lost).

***If a winning teams margin exceeds 10 goals the team will only be credited with a maximum of 60 points (10 goals) winning margin.***

### Drawn Matches

A draw will stand in home and away matches and two points will be awarded to each team, but not in finals. In finals, 5 minutes each way will be played until a result is determined. If poor light or circumstances prevent play from continuing, the match shall be re-scheduled to the first mutually available Tuesday after the drawn game.

A game will be deemed a final when it is an elimination game i.e. is not part of the regular weekly fixtures. An SSAC member will make any decision on drawn games and in their absence the responsibility will fall on the Central Field Umpire(s). Refusal by any team to play 5 minutes each way will be deemed a **forfeit** on their behalf and the game will be awarded to the opposing side.

### 12. AGE OF PLAYERS

Players must be full-time students at the school in the year of play. **Students in Year 8 and 9 can participate in the Freo Dockers Cup. If a school is short of numbers parent consent must be obtained for students in year 8/9 if they are to participate. Those schools having year 8/9 students participating must inform the opposing team prior to taking the field. Issues relating to liability rest squarely with the school. It is the schools responsibility to ensure that this rule is adhered to and schools are liable for any consequences of not doing so.**

### 13. MATCH BALL (SIZE 4 AFL STANDARD)

Each home team will provide the match ball. The away team is to provide a suitable spare football. The ball will be a WAFC agreed sponsored brand.

### 14. PRIVACY POLICY

Team photographs or other images may be produced during the football season by the governing body (WAFC) and may be utilized for the promotion and development of football by the governing body. Completion and lodgement of the Nomination Form indicates acceptance of his policy.

### 15. TRAVEL ASSISTANCE

To assist with travel costs a subsidy will be available for disbursement at the conclusion of the competition, based on the total distance traveled by each school.

**Applications for travel assistance close on Friday 4 September.**



## MOORE DIVISION

| SCHOOL                      | GROUND                  | COACH           | PHONE        | EMAIL                          |
|-----------------------------|-------------------------|-----------------|--------------|--------------------------------|
| Corpus Christi College      | School Oval             | James Howard    | 0439 903 992 | jhoward@corpus.wa.edu.au       |
| John Septimus Roe ACS       | School Oval             | Jessica Dicoski | 0400 198 680 | jdicoski@jsracs.wa.edu.au      |
| Presbyterian Ladies College | Claremont Oval          | Drew McDonald   | 0412 744 194 | dmcDonald@ccgs.wa.edu.au       |
| St Brigid's College         | Mazenod College         | Jim Miller      | 0407 309 507 | miller.jim@stbrigids.wa.edu.au |
| St Mary's AGS               | School Oval             | Emily Johnston  | 0435 517 899 | emily.johnston2404@hotmail.com |
| Kennedy Baptist College     | Murdoch Uni Sports Oval | Tim Basile      | 0422 406 058 | tbasile@kennedy.wa.edu.au      |
| Kolbe Catholic College      | School Oval             | Erica Chisholm  | 0439 959 316 | e.chisholm@kolbe.wa.edu.au     |

**Region Coordinator: Jim Miller – St Brigid's College, 0407 309 507**

**Results to be FAXED or EMAILED by the HOME TEAM before 10.30am on Wednesday morning**

**Fax: 9291 8813 / Email: miller.jim@stbrigids@stbrigids.wa.edu.au**

## WHITE DIVISION - NORTH EAST

| SCHOOL                         | GROUND                    | COACH            | PHONE        | EMAIL                              |
|--------------------------------|---------------------------|------------------|--------------|------------------------------------|
| Ballajura Community College    | School Oval               | Cindy Cross      | 0417 605 199 | cindy.kross@education.wa.edu.au    |
| Kingsway Christian College     | Ashdale Seconadry College | Lorrayne Grullis | 0437 054 997 | lorrayne.grullis@kcc.wa.edu.au     |
| Northam Senior High School     | School Oval               | Leith Woods      | 0408 009 300 | leith.woods@education.wa.edu.au    |
| Swan Christian College         | School Oval               | Rebecca Coleman  | 0414 325 445 | rebeccac@scea.wa.edu.au            |
| John Forrest Secondary College | RA Cooke Reserve          | Reece Phoenix    | 0433 710 839 | reece.phoenix@education.wa.edu.au  |
| Darling Range Sports College   | School Oval               | Shaun Clifford   | 0413 654 154 | shaun.clifford@education.wa.edu.au |
| Aranmore Catholic College      | AWAY GAMES ONLY           | Craig Thomas     | 0417 912 226 | c.thomas@aranmore.wa.edu.au        |
| La Salle College               | School Oval               | Joe Sorgiovanni  | 0401 887 642 | jso@lasalle.wa.edu.au              |
| Ellenbrook Secondary College   | School Oval               | Darren Young     | 0401 994 523 | darren.young@education.wa.edu.au   |

**Region Coordinator: David Traynor - John Septimus Roe, 0437 800 948**

**Results to be FAXED or EMAILED by the HOME TEAM before 10.30am on Wednesday morning**

**Fax: 9247 9344 / Email: dtraynor@jsracs.wa.edu.au**



FOOTBALL COMMISSION INC.

## WHITE DIVISION - NORTH WEST

| SCHOOL                     | GROUND          | COACH           | PHONE        | EMAIL                               |
|----------------------------|-----------------|-----------------|--------------|-------------------------------------|
| Churchlands SHS            | School Oval     | Sam Marson      | 0438 994 009 | smarson@churchlands.wa.edu.au       |
| Warwick SHS                | School Oval     | John Batten     | 0417 971 530 | john.batten1@education.wa.edu.au    |
| Perth Modern School        | AWAY GAMES ONLY | Scott Marshall  | 0450 743 026 | scott.marshall@education.wa.edu.au  |
| Iona College               | Mann oval       | Taylor Pervan   | 0404 622 955 | tpervan@iona.wa.edu.au              |
| Wanneroo Secondary College | School Oval     | Tom Moscarda    | 0439 644 845 | thomas.moscarda@education.wa.edu.au |
| Woodvale Secondary College | School Oval     | Luke Hendricks  | 0452 209 456 | luke.hendricks@education.wa.edu.au  |
| Carine Senior High School  | School Oval     | Scott Underwood | 0422 533 664 | scott.underwood@education.wa.edu.au |
| Mater Dei College          | School Oval     | Wendy Martin    | 0404 946 724 | wendy.martin@mdc.wa.edu.au          |

**Region Coordinator: Chris Tan – Churchlands SHS, 0401 632 988**

**Fax: 9441 1701 / Email: ctan@churchlands.wa.edu.au**

**Results to be FAXED or EMAILED by the HOME TEAM before 10.30am on Wednesday morning**

## WHITE DIVISION - SOUTH

| SCHOOL                      | GROUND           | COACH            | PHONE        | EMAIL                             |
|-----------------------------|------------------|------------------|--------------|-----------------------------------|
| Carey Baptist College       | School Oval      | Jackson Norton   | 0430 367 376 | jnorton@carey.wa.edu.au           |
| Lumen Christi College       | School Oval      | Ben Shaw         | 0412 546 853 | shaw.ben@lumen.wa.edu.au          |
| Willetton SHS               | AWAY GAMES ONLY  | Sophie McLean    | 0400 298 680 | sophie.mclean@education.wa.edu.au |
| Emmanuel Catholic College   | School Oval      | Jarrold Parry    | 0432 282 507 | parry.jarrold@emmanuel.wa.edu.au  |
| Seton Catholic College      | AWAY GAMES ONLY  | Gary Bruggess    | 0406 506 168 | gburgess@seton.wa.edu.au          |
| All Saints' College         | School Oval      | Rahni Green      | 0403 537 102 | rahni.greene@allsaints.wa.edu.au  |
| Clontarf Aboriginal College | School Oval      | Desiree Delcoure | 0402 056 305 | ddelcoure@clontarf.wa.edu.au      |
| St Norbert's College        | Queens Park Oval | Michelle Hyland  | 0415 098 072 | mhyland@norbert.wa.edu.au         |
| Peter Carnley ACS           | School Oval      | Adam Halliday    | 0439 513 838 | ahalliday@pcacs.wa.edu.au         |

**Region Coordinator: Oliver Beath – All Saints College, 0411 018 939**

**Fax: 9310 4726 / Email: oliver.beath@allsaints.wa.edu.au**

**Results to be EMAILED or FAXED by the HOME TEAM before 10.30am on Wednesday morning**

## WHITE DIVISION - PEEL

| SCHOOL                         | GROUND                | COACH           | PHONE        | EMAIL                               |
|--------------------------------|-----------------------|-----------------|--------------|-------------------------------------|
| Pinjarra SHS                   | Sir Ross McLarty Oval | Ashley Snow     | 0430 577 716 | ashley.snow@education.wa.edu.au     |
| Mandurah Catholic College      | School Oval           | Nick Jenkins    | 0439 958 871 | jenkins.nick@cathednet.wa.edu.au    |
| Living Waters Lutheran College | Warnbro Oval          | Meghan Carr     | 0413 910 305 | mcarr@livingwaters.wa.edu.au        |
| Halls Head College             | Peelwood PDE          | Tanya Ierace    | 0427 057 061 | tanya.ierace@education.wa.edu.au    |
| Coodanup College               | School Oval           | Craig Callaghan | 0417 973 939 | craig.callaghan@education.wa.edu.au |
| Baldivis Secondary College     | School Oval           | Scott Smith     | 0433 392 153 | scott.smith3@education.wa.edu.au    |
| Serpentine-Jarrahdale GS       | School Oval           | James Bristow   | 0403 710 405 | jbristow@sjgs.wa.edu.au             |

**Region Coordinator: Tanya Ierace – Halls Head College, 0427 057 061**

**Fax: 9535 8790 / Email: tanya.ierace@education.wa.edu.au**

**Results to be FAXED or EMAILED by the HOME TEAM before 10.30am on Wednesday morning**



## YR 8/9 FREQ DOCKERS CUP

If your school is interested in participating in the Year 8/9 Schoolgirls Freq Dockers Cup contact the WAFC Development Officer in your District.

## FEMALE FOOTBALL OUTSIDE SCHOOL

- All Girls Auskick Centres (ages 5-8)
- Junior Girls Competitions (ages 8-12)
- Youth Girls Competition (ages 13-18)
- WA Women's Football League (ages 16+)
- Indigenous & Multicultural programs

For more information on Female Football programs please contact:

- Your District Development Officer
- Your local WAWFL Club [www.wafootball.com.au](http://www.wafootball.com.au)
- Female Football Coordinator – Allana Dickie [adickie@wafc.com.au](mailto:adickie@wafc.com.au)

Follow Female Football in WA



FemaleFootballWA



@FemaleFootyWA



@FemaleFootyWA

## FEMALE HIGH PERFORMANCE OPPORTUNITIES

- School Sport WA State 16's Schoolgirls
- Talent academies 16-18 years, 19-24 years
- AFL Youth Girls National Championships (U18's)
- AFL Open Women's National Championships (State Open's)
- AFL Draft and Exhibition Match

For Information contact the Female High Performance Manager – Alison Moore 0430 868 145 [amoore@wafc.com.au](mailto:amoore@wafc.com.au) or visit [www.wafootball.com.au](http://www.wafootball.com.au)

## THE 2014 TITLE HOLDERS

In the 19<sup>th</sup> year of the competition these schools were victorious in their respective divisions. Congratulations.



### MOORE DIVISION

*St Mary's AGS*



### WHITE DIVISION

*Kolbe Catholic College*



### VANDERWEIDE DIVISION

*Bunbury Catholic Grammar School*





## CHAMPION SCHOOLS

|      |                        |                          |               |
|------|------------------------|--------------------------|---------------|
| 1996 | Newman College         |                          |               |
| 1997 | Kalamunda SHS          |                          |               |
| 1998 | Kent St SHS            |                          |               |
| 1999 | Kelmscott SHS          |                          |               |
| 2000 | Newman College         |                          |               |
| 2001 | Kelmscott SHS          |                          |               |
| 2002 | St Brigid's College    |                          |               |
| 2003 | Kelmscott SHS          |                          |               |
| 2004 | All Saints College     |                          |               |
| 2005 | Kelmscott SHS          |                          |               |
| 2006 | Willetton SHS          |                          |               |
| 2007 | Willetton SHS          | Kelmscott SHS            |               |
| 2008 | John Septimus Roe ACS  | Bunbury CGS              | Bunbury CGS   |
| 2009 | Willetton SHS          | Winthrop Baptist College | Bunbury CGS   |
| 2010 | John Septimus Roe ACS  | Corpus Christi College   | Katanning DHS |
| 2011 | John Septimus Roe ACS  | Corpus Christi College   | Katanning DHS |
| 2012 | Corpus Christi College | St Mary's AGS            | Northam SHS   |
| 2013 | St Mary's AGS          | Kennedy Baptist College  | Northam SHS   |
| 2014 | St Mary's AGS          | Kolbe Catholic College   | Bunbury CGS   |

## SCHOOLGIRLS COMMITTEE

| NAME                        | POSITION                     | PHONE        | EMAIL                              |
|-----------------------------|------------------------------|--------------|------------------------------------|
| Alby Nuich                  | Chairman                     | 0409 086 231 | aandnuich@education.wa.edu.au      |
| Clayton Anderson            | Schools Competitions Manager | 0408 836 689 | canderson@wafc.com.au              |
| Geoff Hayes                 | Competition Coordinator      | 0409 436 334 | geoffrey.hayes@education.wa.edu.au |
| <b>Region Coordinators:</b> |                              |              |                                    |
| Jim Miller                  | Moore Division               | 0407 309 507 | miller.jim@stbrigids.wa.edu.au     |
| David Traynor               | White North East             | 0437 800 948 | dtraynor@jsracs.wa.edu.au          |
| Chris Tan                   | White North West             | 0401 632 988 | ctan@churchlands.wa.edu.au         |
| Oliver Beath                | White South                  | 0411 018 939 | oliver.beath@allsaints.wa.edu.au   |
| Tanya Ierace                | White Peel                   | 0427 057 061 | tanya.ierace@education.wa.edu.au   |
| Dean Margetts               | Umpires Coordinator          | 9381 5599    | dmargetts@wafc.com.au              |

# EAGLES SCHOOLBOYS CUP 2015



## DID YOU KNOW?

- The competition has run in various forms since 1983.
- The competition is played in metropolitan WAFL Districts and Country Regions, with the aim of producing a champion school to represent each of the nine WAFL clubs, who then progress to Quarter-Final, Semi-Final and Grand Final stage.
- In 2014, over 6,500 students from WA participated in the Eagles Schoolboys Cup

## CONTENTS

|                                    |    |
|------------------------------------|----|
| Preface                            | 34 |
| Eagles Schoolboys Cup Timeline     | 34 |
| Competition Format                 | 35 |
| Fixtures                           | 35 |
| Eligibility                        | 36 |
| The Second Tier Competition        | 37 |
| Regulations and conditions of play | 38 |
| WAFC Responsibilities              | 41 |
| Awards                             | 41 |
| Previous Winners                   | 42 |
| Winning Team 2014                  | 42 |



## PREFACE

Welcome to the Eagles Schoolboys Cup for 2015. Our core objective remains to provide a professional competition with the capacity to deliver a safe, fun and fair environment for every stakeholder.

I would like to take this opportunity to acknowledge those who have taken on the roles of coaches, managers, officials and support staff and to thank you all sincerely for your efforts. Without your support the competition would not run.

I would also like to acknowledge the work of our Metropolitan and Regional Development staff for their coordination and management of the competition.

Finally, I thank the West Coast Eagles for their commitment and support of secondary school football. Their partnership of this program ensures the Eagles Schoolboys Cup is an enjoyable experience for students, teachers, coaches and umpires.

I wish all the schools the best of luck in this years competition.

CLAYTON ANDERSON  
Schools Competitions Manager  
West Australian Football Commission

## 2015 EAGLES SCHOOLBOYS CUP TIMELINE

| DAY         | DATE        | EVENT  |
|-------------|-------------|--|
| Monday      | February 2  | Term 1 Commences / Online Nominations Open             |
| Thursday    | April 2     | End of Term 1 / Nominations Close                      |
| Monday      | April 20    | Term 2 Commences                                       |
| Monday      | April 27    | Draft Fixtures / Carnival Dates - Country schools      |
| Friday      | May 1       | Coaches District/Regional Meetings                     |
| Monday      | May 4       | Round 1 played this week                               |
| Friday      | July 3      | End of Term 2  |
| Monday      | July 20     | Term 3 Commences                                       |
| Monday      | July 27     | Metropolitan v Country Champion games played this week |
| Monday      | August 3    | Elimination Final played this week (Peel v Perth)      |
| Monday      | August 10   | Quarter Finals played this week                        |
| Monday      | August 17   | Semi Finals played this week                           |
| Fri/Sat/Sun | August/SEPT | Grand Final – Domain Stadium                           |



## COMPETITION FORMAT

### *Metropolitan*

- Schools will be grouped according to WAFL District boundaries based on the school's street address.
- Matches will be played to determine each WAFL District's Metropolitan Champion school.

### *Country*

- Schools will be grouped geographically to minimise travel until regional winners are decided (Midwest / Gascoyne, Midlands, Wheatbelt, Goldfields, Great Southern and South West), who will then compete against their respective WAFL Metropolitan Champion school to determine overall WAFL club zone winner. All country schools will be advised of their allocated carnival day by their WAFC Football Development Officer.

## FIXTURES

- AN ALLOCATED PLAYING DAY WILL BE DETERMINED BY YOUR WAFC DEVELOPMENT OFFICER IN CONSULTATION WITH COMPETING SCHOOLS
- Any changes to fixtures or venues must **first** be approved by the WAFC Football Development Officer based at your zoned WAFL Club.

### **Length of Competition**

The first games will be played on the week commencing **Monday 4 May 2015**. The number of games will depend largely upon the number of schools in each district / region.

### **Grand Final**

The Grand Final of the Eagles Schoolboys Cup will be played as a curtain raiser to the round 23 match between West Coast v St Kilda at Domain Stadium.

### **Fixtures / Results / Ladders**

Details can be viewed via your WAFL District website.

## ELIGIBILITY

- All schools with students in Years 8 and 9 are eligible to participate.
- Players must be full time students at the school to be eligible to play.
- A player enrolled in Year 8 is deemed to be a Year 8
- A player enrolled in Year 9 is deemed to be a Year 9
- A player enrolled in Year 10 is deemed to be a Year 10
- All teams must have a minimum of five (5) Year 8 students included for each game, three (3) of whom must be on the field at any one time.
- **Students in year 7 are not permitted to participate in the Eagles Schoolboys Cup. The Eagles Cup and Freo Dockers Shield exists to meet the needs of these students. It is the schools responsibility to ensure this rule is adhered to and schools are liable for any consequences of not doing so.**
- Small schools will receive concessions to enable them to be competitive:
  - (i) District High Schools may combine with other District High Schools if the combined Year 8 and 9 male population does not exceed 115 students.
  - (ii) Individual schools or combinations may play the following number of Year 10 students, dependent on population.

| TOTAL NUMBER OF YEAR 8 & 9 MALES | MAXIMUM NUMBER OF YEAR 10S ALLOWED |
|----------------------------------|------------------------------------|
| 69 or less                       | 3                                  |
| 70 to 99                         | 2                                  |
| 100 to 114                       | 1                                  |
| 115 and above                    | Nil                                |

- The quoted number of Year 10s, as per above table, refers to the number of Year 10s included for each game.
- Schools that play more than the prescribed quota of Year 10s or less than the prescribed quota of Year 8s will forfeit **all** points for games where this disregard for the rules occurred and jeopardize their potential to be accepted for nomination in 2016.
- Schools wishing to play Year 10 students in their team must **apply in writing** to Clayton Anderson: Schools Competitions Manager. Please ensure any request to play Year 10s includes the following:
  - (i) Name, height, weight, date of birth of each student/s the school wishes to play.
  - (ii) Current enrolment numbers of males in Year 8 and 9
  - (iii) Be signed by the HOLA Health and Physical Education **and the** Principal.  
This must be approved by Schools Competitions Manager and relevant WAFC Development Officer **prior** to your first fixture.
- **Year 10 players involved in development squads or elite state programs are ineligible for selection.**
- **To ensure that there are no discrepancies with player eligibility, all competing schools will be required to submit a team sheet for each finals game they participate in. A copy must be provided to the Ground Manager for each game.**



## THE SECOND TIER COMPETITION

The “Second Tier” is designed for schools with a low number of enrolments in lower school or for schools where the status of Australian Football is particularly low.

The aim of the Second Tier competition is for schools to strengthen the status of Australian Football within that school and to return or join the main competition as **soon as possible**.

Participation relies on the following criteria:

- Schools must nominate for this competition by ticking the appropriate box on the nomination form.
- The WAFC and the WAFC Football Development Officer review all nominations and reserve the right to change the division a school has nominated for to achieve a balanced competition.
- Curtin Raisers will not be afforded to this tier.
- Winning school of the Second Tier will receive a trophy presented by their zoned WAFL District.

## REGULATIONS AND CONDITIONS OF PLAY

### 1. GROUNDS

Games are to be played at the home schools nominated oval. Where a school has nominated a junior football club oval or council oval as its home ground, it is that school's responsibility to ensure that the ground is ready for each home game, and liaise with the respective club or council accordingly.

Ovals for Youth age matches can range between 135m to 185m in length and 110m to 155m in width. **Goal and behind posts must be padded. Cricket pitches are to be covered. It is mandatory that the home team be responsible for goal post padding so that both goal and behind posts are covered. A game will not proceed where any posts and cricket pitches are uncovered (It is recommended the away team still brings goal post padding to games).**

Home teams are responsible for all ground markings – centre and goal squares and boundary line. Visiting schools need to inspect the oval prior to the commencement of the game to make sure it is suitable to proceed. Any concerns should be highlighted to the Central Umpire prior to play commencing. The Central Umpire will have the final say as to whether the game will proceed. **It is recommended that all schools use the WAFC endorsed JLT match day checklist. JLT match day checklists can be obtained from Schools Competitions Manager Clayton Anderson [canderson@wafc.com.au](mailto:canderson@wafc.com.au).**

### 2. SAFETY

Spectators are to be kept from the boundary line and goal areas. Control of spectators is the responsibility of the competing schools. **Schools must have a first aid kit including ice or ice packs, along with a stretcher at the game.** Access to mobile phone communication is mandatory. If a school has a nurse, their involvement both in training school sports trainers and/or being at the game should be encouraged.

Central Umpire/s are to check teams before each game for nails, earrings, necklaces, boots etc. Any item considered dangerous is to be removed.

### 3. PUBLIC LIABILITY

**The WAFC has arranged public Liability Insurance for a sum insured of \$20,000,000 to cover its legal liabilities. The WAFC expects each school involved in Australian Football programs to maintain public liability insurance to sufficiently cover its legal liabilities. At its own discretion each school may want to consider purchasing personal accident insurance to protect against claims for non-Medicare medical expenses arising from this Australian Football program or any other school program.**

### 4. OVERSEER

The overseer of all on and off field conduct is the team coaches. The conduct of this competition relies totally upon the attitude of the coach. Coaches are to report to the WAFC on any behaviour detrimental to the Codes of Conduct of the competition. Should a SSFAC member be in attendance at a fixture, that person will act as the game overseer. The Advisory Committee members have the right to remove any player in breach of the Code of Conduct from the field of play. They may also lodge a request to investigate any incident outside of the rules of the game.



## 5. CHANGE ROOMS

Change rooms are to be allocated by the home team if available. The cleaning up of these rooms and the ground is the responsibility of both teams.

## 6. RULES

Rules for all divisions are as per the Laws of Australian Football.

## 7. UNIFORMS

All teams are to be in uniform playing gear including:

- Numbered school jumpers
- Uniform football shorts
- Correct socks

## 8. STARTING TIMES AND DURATION OF MATCHES

All games must start at 4:00pm sharp and finish no later than 5:00pm. Games will be of two 20 minute halves, with no time on, with a five (5) minute interval at half time.

### Prior to the Game

The home team is to line up in the centre of the ground and wait for the away team to line up opposite. Players, coaches and umpires are to shake hands, both before and after the game.

### At the Completion of the Game

The two coaches are to bring teams together to make any appropriate comments and to complete the match report. The Umpires are requested to participate. **THE COMPLETED MATCH REPORT IS TO BE FAXED / EMAILED TO YOUR REGION COORDINATOR BY THE HOME TEAM.**

## 9. CONDITIONS OF PLAY

Every endeavour must be made to ensure games are played at the fixtured time and place. If a team forfeits a match or if conditions are not met, a 10-goal win will be awarded to the non-offending team, plus six premiership points. The offending team will be invoiced for any umpiring costs incurred.

***In the circumstances where an umpire does not arrive, the game must be played, with umpiring arrangements made to the mutual satisfaction of both teams.***

## 10. AGE OF PLAYERS

Players must be full-time students at the school and in year 8 and 9 to play. **Issues relating to liability rest squarely with the school. It is the schools responsibility to ensure that this rule is adhered to and schools are liable for any consequences of not doing so.** Year 7 students are not permitted to participate in the Eagles Schoolboys Cup competition.

## 11. MATCH BALL (SIZE 4 AFL STANDARD)

Each home team will provide the match ball. The away team is to provide a suitable spare football. The ball will be a WAFC agreed sponsored brand.



## 12. DRAWN MATCHES

A draw will stand in home and away matches and two points will be awarded to each team, but not in finals. In finals 5 minutes each way will be played until a result is determined. If poor light or circumstances prevent play from continuing, the match shall be re-scheduled. In the event of a draw in a curtain raiser Grand Final in the Jakovich or Cable divisions, the game will be replayed at the first mutually available Wednesday after the drawn game.

A game will be deemed a final when it is an elimination game i.e. is not part of the regular weekly fixtures. A SSFAC member will make any decision on drawn games and in their absence the responsibility will fall on the Central Field Umpire(s). Refusal by any team to play 5 minutes each way will be deemed a **forfeit** on their behalf and the game will be awarded to the opposing side.

## 13. PRIVACY POLICY

Team photographs or other images may be produced during the football season by the governing body (WAFC) and may be utilized for the promotion and development of football by the governing body. Completion and lodgement of the Nomination Form indicates acceptance of this policy.

## 14. TRAVEL ASSISTANCE

To assist with travel costs a subsidy will be available for disbursement at the conclusion of the competition, based on the total distance traveled by each school.

**Applications for travel assistance close on Friday 4 September.**

## WAFC RESPONSIBILITIES

- Attend competition launch / coaches meeting prior to the start of the competition
- Arrange schools into appropriate divisions
- Set fixtures for that district / region
- Collate results after each round of fixtures
- Maintain a premiership table for each division
- Be a contact for all schools for any queries
- Publish weekly match results on the District's website
- Liaise with schools and / or District Umpires Coach to provide field umpire for each match
- Liaise with schools to provide a Coach if one not available through existing school staff
- Identify schools that would benefit most from participating in the Second Tier Competition
- Develop, promote and coordinate a well organised competition for students in years 8 and 9
- Supply match football to each team
- Provide payment for umpires
- Supply score cards and match report sheets
- Promotion and publicity for the competition
- Assist with travel costs incurred by schools
- Promote and actively encourage accreditation of **all** school coaches
- Monitor Year 10 inclusion in teams

## AWARDS

- Each WAFL club's champion metropolitan and country school will be presented with a shield at a school assembly at the conclusion of the competition
- The Champion school to be awarded the Eagles Schoolboys Cup and Championship medallions
- The runners-up to receive Grand Final medallions
- The best player in the Grand Final will receive the Ross Davis Medal.



*2014 winner of the Ross Davis Medal was Jackson Perry from Comet Bay College.*

## PREVIOUS WINNERS

|      |                              |      |                              |
|------|------------------------------|------|------------------------------|
| 1983 | Belmont SHS                  | 1999 | Carine SHS                   |
| 1984 | Christ Church Grammar School | 2000 | Aquinas College              |
| 1985 | Aquinas College              | 2001 | Mazenod College              |
| 1986 | Hamilton SHS                 | 2002 | Trinity College              |
| 1987 | Trinity College              | 2003 | Trinity College              |
| 1988 | Guildford Grammar School     | 2004 | Sacred Heart College         |
| 1989 | Narrogin SHS                 | 2005 | Trinity College              |
| 1990 | Aquinas College              | 2006 | Hale School                  |
| 1991 | Northam Districts            | 2007 | Trinity College              |
| 1992 | Northam SHS                  | 2008 | Trinity College              |
| 1993 | Guildford Grammar School     | 2009 | Trinity College              |
| 1994 | Corpus Christi College       | 2010 | Trinity College              |
| 1995 | South Avon                   | 2011 | Trinity College              |
| 1996 | Corpus Christi College       | 2012 | Darling Range Sports College |
| 1997 | Aquinas College              | 2013 | CBC Fremantle                |
| 1998 | Carine SHS                   | 2014 | Comet Bay College            |










*2014 Eagles Cup Champions – Comet Bay College*



# GENERAL COMPETITION INFORMATION



## METROPOLITAN DEVELOPMENT STAFF CONTACTS

|  | DISTRICT        | CONTACT        | MOBILE       | EMAIL                |
|--|-----------------|----------------|--------------|----------------------|
|    | Claremont       | Sam Cousens    | 0438 838 768 | scousens@wafc.com.au |
|    | East Fremantle  | Daren Bell     | 0438 952 487 | dbell@wafc.com.au    |
|   | East Perth      | Bronte Ryan    | 0430 868 512 | bryan@wafc.com.au    |
|    | Peel            | Elly Lambkin   | 0438 677 700 | elambkin@wafc.com.au |
|   | Perth           | Chris Brown    | 0412 676 857 | cbrown@wafc.com.au   |
|    | South Fremantle | Lachlan Harris | 0421 249 477 | lharris@wafc.com.au  |
|    | Subiaco         | Rohan Blee     | 0438 994 412 | rblee@wafc.com.au    |
|   | Swans           | Daniel Curtis  | 0430 969 906 | dcurtis@wafc.com.au  |
|  | West Perth      | Graham Mills   | 0409 084 483 | gmills@wafc.com.au   |



## REGIONAL DEVELOPMENT STAFF

| REGION         | CONTACT         | MOBILE       | EMAIL                 |
|----------------|-----------------|--------------|-----------------------|
| Goldfields     | Gemma Harrison  | 0417 179 463 | gharrison@wafc.com.au |
| Great Southern | Tom Moir        | 0428 428 440 | tmoir@wafc.com.au     |
| Kimberley      | Mick Albert     | 0418 938 167 | albert@garduwa.com.au |
| Mid West       | Steve Broburg   | 0429 914 220 | sbroburg@wafc.com.au  |
| Midlands       | Glen Collins    | 0417 920 817 | gcollins@wafc.com.au  |
| Pilbara        | Vicki Agnew     | 0455 661 633 | vagnew@wafc.com.au    |
| South West     | Glenn Omodei    | 0402 258 232 | gomodei@wafc.com.au   |
| Wheatbelt      | Mitchell Harvey | 0419 859 576 | mharvey@wafc.com.au   |

## **SAFETY**

### **USE OF STRETCHER / INJURED PLAYERS**

In all games, including finals, any player who in the opinion of the injured player's team officials requires the assistance of a stretcher shall be attended by a suitably trained and certified medical officer in the practice of use of a stretcher prior to removal of that player, UNLESS the player is capable and conscious enough to place themselves on the stretcher without assistance.

If the stretcher has been called for by an authorised person, then the player will be removed from the playing field via the most direct route for play to recommence. The injured player may be replaced through the interchange.

If a player is removed from the field on a stretcher then that player will not take any further part in the game whatsoever.

If, in the opinion of a field umpire or team medical officer, a player cannot be moved from the field of play due to the severity of an injury, then play may be abandoned for the game at the discretion of a meeting between the two Coaches and the Field Umpire and or any **SSFAC member** if present.

The **SSFAC** shall be advised of any such abandonment for the purpose of either rescheduling the fixture or determining a result according to the progress score and point of the game at which the game was abandoned.

### **MOUTH GUARDS**

**It is recommended that all players wear a mouth guard when either training for or playing football.**

### **BLEEDING & BLOOD BORN INFECTIONS**

No school shall allow any player to participate in any match or continue to participate in any match for so long as such player:

- (a) is bleeding;
- (b) has blood on any part of his/her person or uniform.

Only the field umpires can direct a player to leave the playing field, thereby ensuring the team is not disadvantaged by playing one team member short for any period of time. A player, who refuses to promptly obey a direction of an umpire given in accordance with this policy, shall be reported by the umpire for misconduct in that he/she refused to leave the field.

Upon being directed to leave the playing arena, a player shall not return to take any further part in any match until and unless:

- (a) the cause of any such bleeding has been abated;
- (b) the injury is securely covered to the extent that no blood is visible;
- (c) any bloodstained article of uniform has been removed and replaced;
- (d) any blood on any part of a player's person has been thoroughly cleansed and removed.

### **CONCUSSION**

Concussion occurs when, after a blow to the head, there is brain injury with some immediate disturbance of brain function. Any player showing the signs or symptoms of concussion should be removed from the field immediately and referred to a medical practitioner. A player who has suffered concussion with or without loss of consciousness should not participate in any match or training session until he/she is fully recovered and has been cleared by a thorough medical examination. All players sustaining a concussion require a medical clearance before resumption of their sport.



## OFFICIALS

### The Coach

The Coach, will be a nominated teacher at the school. If a teacher cannot be found, then the school should arrange for a suitable person from the local community to be interviewed by the school Principal and/or HOLA Health and Physical Education for the coaching position.

It is a condition of this competition that a teacher at the school must be associated with the team and in attendance for the duration of the game.

The Coach's role is paramount. He/she is responsible primarily for the on and off field actions of their players and therefore must set standards of discipline.

### Field Umpires

WA Football supports a **ZERO TOLERANCE** stance against any form of umpiring or official abuse. Any breaches of these codes will result in penalties and sanctions directed at the person responsible, the team and possibly the school.

The Umpires Coordinator shall oversee a panel of umpires from which they will appoint a trained umpire or umpires to officiate at each match. Further, the WAFC encourages qualified students or staff to submit their names to be included on the umpiring panel. Such persons will be paid for their services. Umpires are required to bring Red/Yellow cards to all games.

***TEACHERS COULD BE APPROACHED TO UMPIRE AFL INTERSCHOOL CUP GAMES WHEREVER NECESSARY. IF SCHOOLS FAIL TO NOTIFY THE UMPIRE'S COORDINATOR OF ANY ALTERATION TO/OR FORFEIT OF A SCHEDULED MATCH, THE FORFEITING TEAM WILL BE INVOICED FOR THE UMPIRING COSTS INCURRED.***

### Goal Umpires

Each team must supply one mature goal umpire. He/she must have a white coat, goal flags and a scorecard. Goal umpires must check scores at half time and after the match. Field umpires are to supervise this.

### Boundary Umpires

Each team shall supply a boundary umpire who shall be correctly attired and of sufficient knowledge and maturity to correctly throw the ball into play and carry out all other responsibilities of the position.

### Finals Umpires

These umpires will be organised by the Umpire Coordinator.

Should a field umpire not be available to officiate at any match the opposing coaches or team officials may agree to appoint any person to act in that capacity. In such case the appointed umpire shall have the same responsibilities and authority as any umpire appointed by the Umpires Coordinator.

### Timekeeper

The home team is to supply a timekeeper who will have a siren or a hooter. A stopwatch is to be used at all times to ensure accurate times are maintained. The WAFC will supply a timekeeper for all curtain raiser matches unless advised otherwise.

### Match Reports

These are the responsibility of the **HOME** team and are to be completed on the day and signed by the coaches and umpires. Offending players are to be noted in the report. **The report is to be forwarded to the Region Coordinator by 10.30am the day after the game.** This is essential to compile regular premiership tables.

## CODES OF CONDUCT

The major objective of Junior Football is to provide an opportunity for all children to play Australian Football in a safe environment designed to maximise the acquisition of skill and provide enjoyment. The West Australian Football Development Council strongly advises that all persons involved be issued with copies of the appropriate code of conduct. WA Football supports acts of sportsmanship (hand shaking etc) between players, coaches, administrators, umpires etc.

### ADMINISTRATOR'S CODE OF CONDUCT

- Ensure that equal opportunities for participation in sports are made available to all children, regardless of ability, size, shape, gender, age, disability or ethnic origin.
- Ensure that rules, equipment, length of games and training schedules take into consideration the age, ability and maturity level of participating children.
- Ensure that adequate supervision is provided by qualified and competent coaches and officials capable of developing appropriate sports behaviour and skill technique.
- Remember that children participate for enjoyment and play down the importance of rewards.
- Provide clinics aimed at improving the standards of coaching and officiating, with an emphasis on appropriate behaviour and skill techniques.
- Ensure that parents, coaches, sponsors, trainers and participants understand their responsibilities regarding fair play.
- Modify rules and regulations to match the skill level of children and their needs.
- Condemn unsporting behaviour and promote respect for all opponents.
- Publicly encourage rule changes which will reinforce the principles of participation for fun and enjoyment.
- Ensure that your behaviour is consistent with the principles of good sporting behaviour.
- Make a personal commitment to keep yourself informed of sound officiating principles and the principles of growth and development of children.
- Ensure promotion, well-being and safety of umpires and encourage good sportsmanship before, during and after matches.
- Ensure positive player/umpire relationships are continually developed.

### COACH'S/TEACHER'S CODE OF CONDUCT

- Be reasonable in your demands on young players' time, energy and enthusiasm.
- Avoid over-playing the talented players. The "just-average" players need and deserve equal time.
- Remember that children participate for fun and enjoyment.
- Ensure that equipment and facilities meet safety standards and are appropriate to the age and ability of the players.
- Take into consideration the maturity level of the children when scheduling and determining the length of practice times and competition.
- Develop team respect for the ability of opponents as well as for the judgment of officials and opposing coaches.
- Ensure positive coach / umpire relationships are continually developed.
- Follow the advice of a physician when determining when an injured player is ready to recommence training or competition.
- Keep yourself informed of sound coaching principles and the principles of growth and development of children.

- Create opportunities to teach appropriate sports behaviour as well as basic skills.
- Ensure that skill learning and appropriate sports behaviour have priority over highly structured competitions for young children.
- Help children understand the responsibilities and implications of their freedom to choose between fair and unfair play.
- Ensure knowledge of laws of game is such that you encourage the players to play the game and accept the role of the umpire.

Be aware of your obligations to adhere to all policies contained or referred to within this manual.

#### **PARENT'S/SPECTATOR'S CODE OF CONDUCT**

- Encourage children to participate if they are interested.
- Encourage children to always participate according to the rules.
- Never ridicule or yell at a child for making a mistake or losing a game.
- Remember that children learn best from example. Applaud good plays by all teams.
- If you disagree with an official, raise the issue through the appropriate channels rather than questioning the official's judgment and honesty in public.
- Support all efforts to remove verbal and physical abuse from sporting activities.
- Recognise the value and importance of volunteer coaches.
- Remember that children play organised sports for fun. They are not playing for the entertainment of spectators only, nor are they miniature professionals.
- Condemn the use of violence in any form, be it by spectators, coaches, officials or players.
- Encourage players to follow the rules and the umpire's decisions.
- Demonstrate appropriate social behaviour by not using foul language, harassing players, coaches or umpires.

#### **PLAYER'S CODE OF CONDUCT**

- Play by the rules.
- Never argue with an official. If you disagree, discuss the matter with your coach or teacher after the game.
- Control your temper. Verbal abuse of officials or other players, or provoking an opponent is not acceptable.
- Work equally hard for yourself and for your team: your team's performance will benefit and so will you.
- Be a good sport. Applaud all good plays whether they be by your team, opponent or the other team.
- Treat all players as you would like to be treated. Do not interfere with, bully or take unfair advantage of another player.
- Cooperate with your coach, team mates and opponents. Without them there would no competition.
- Play for the "fun of it" and not just to please parents and coaches.
- Avoid using derogatory language.
- Take responsibility for your actions.

#### **RUNNER'S/WATER STEWARD'S CODE OF CONDUCT**

- The runner SHOULD BE AN ADULT.
- The runner must be clearly identified.
- The runner's name must be entered in both team books.
- No abusive language or swearing.
- Support the decision of the umpires at all times and never question such decision.

## UMPIRE'S CODE OF CONDUCT

- Modify rules and regulations to match the skill level of children and their needs.
- Compliment all participants on their efforts.
- Be consistent, objective and courteous in calling all infractions.
- Condemn unsporting behaviour and promote respect for all opponents.
- Ensure that the “spirit of the game” for children is not lost by using common sense and not over emphasising errors.
- Publicly encourage rule changes which will reinforce the principles of participation for fun and enjoyment.
- Ensure that your behaviour is consistent with the principles of good sporting behaviour. Actions speak louder than words.
- Make a personal commitment to keep yourself informed of sound officiating principles and the principles of growth and development of children.
- Avoid use of derogatory language.

### REPORTS

The following personnel have the power to report any player or official for any breach of the laws of the game, codes of conduct, member protection policies or of the rules or By-laws of the **Secondary Schools Football Advisory Committee**.

- (a) Field Umpire
- (b) Umpires' Coach whilst in an observing capacity
- (c) Boundary umpires if officially appointed by the **Secondary Schools Football Advisory Committee**
- (d) Goal umpires if officially appointed by the **Secondary Schools Football Advisory Committee**
- (e) Stewards if officially appointed by the **Secondary Schools Football Advisory Committee**
- (f) Any member of the **Secondary Schools Football Advisory Committee**

Any player or official, who is to be reported, must be advised of such report prior to the commencement of the next quarter of the game, unless the offence occurs in the final quarter in which case advice to the Team Manager when passing on the official report sheet will suffice.

### REPORTED PLAYERS

A player against whom any charge has been proved at a hearing of the P&D Board or received a prescribed penalty during the current season, or any player who has received an automatic suspension (ONE WEEK) as a result of having been sent from the ground three (3) times during the season, shall be disqualified from participation in the voting for any Fairest and Best award.

**Any player or official suspended by either a tribunal or prescribed penalty will not be permitted to play, coach or participate in any capacity, in any affiliated district competition including schools, senior metropolitan community football or regional football, for the duration of the penalty. The reverse also applies.**

## THE "YELLOW" CARDS



**ORDER OFF - COOL OFF  
FOR 15 MINUTES PLAYING TIME**

**(For MINOR offences and any  
Behaviour Detrimental to Football)**

FRONT OF YELLOW CARD

## THE "RED" CARDS



**ORDER OFF - STAY OFF  
FOR THE REMAINDER OF THE MATCH**

**(For REPORTABLE offences ONLY)**

FRONT OF RED CARD

### YELLOW CARD CONDITIONS

1. **AN OFFENDER ORDERED OFF FOR A YELLOW CARD OFFENCE CAN BE REPLACED IMMEDIATELY**
2. In the event that a Player or Official:
  - (a) Is issued with two Yellow Card offences on the day of the match, then the offender shall take no further part in the game but can be replaced immediately.
  - (b) When ordered off for a Yellow Card offence, fails to leave the field **immediately** when directed by the field umpire, then the offender shall be reported for misconduct and consequently be deemed to have committed a Red Card offence.

BACK OF YELLOW CARD

### RED CARD CONDITIONS

**AN OFFENDER ORDERED OFF FOR A RED CARD OFFENCE CANNOT BE REPLACED FOR 15 MINUTES game time**

1. The offending Player or Official shall attend a Protests and Disputes Tribunal or where applicable, request the offer a Prescribed Penalty.
2. A Player or Official who fails to leave the Arena **immediately** when directed by the umpire shall be reported for misconduct, the match shall be terminated and the offending person's team will forfeit the match.

BACK OF RED CARD

### **Step One: The Report**

Should any player be reported, the umpire will provide a thorough description of the offence on the Match Report. In order for the matter to be dealt with quickly, he/she must take the following steps **immediately following the game**:

1. Notify the coach of the offending player that the report has been made against.
2. Outline the offence the player has been charged with.
3. Notify the opposing coach if a player on his team was involved in the incident and may be required to attend a tribunal hearing.
4. Notify the Umpire's Coordinator of the report that evening.

#### ***From here, it is the coach's responsibility to:***

- a. Outline the player's options with regard to a penalty:
  - Accept a prescribed penalty
  - Proceed with a tribunal hearing
- b. Contact the Region Coordinator prior to 12pm the following day to notify them as to the player's decided option.
- c. If an opposing player has been offended against, his coach must too, contact the Region Coordinator by 12pm the following day to find out if the player is required at a tribunal hearing.
- d. Notify the Umpire's Coordinator that evening of the report.

### **Step Two: Player's Decision**

Once being notified that a report has been lodged, the player has until the following morning to notify his coach of the decision he has made regarding the penalty. His options are to:

- a. Accept the umpire's decision and take a prescribed penalty, hence eliminating the need for an actual hearing.
- b. Dispute the umpire's decision and choose to have the case heard by the P & D Panel on the Thursday evening, or an evening arranged by the Schools Competitions Manager.  
In either case, the player must have confirmation from a parent/guardian and/or School Principal/HOLA that the decided course of action meets with their approval.

From this point on, the following shall occur:

#### **DECISION: PRESCRIBED PENALTY**

If the player chooses this course of action, the following must occur:

1. The player notifies the coach of his decision prior to school the following day. A standard "Confirmation of Report Form" must be completed by the player and a parent/guardian and/or School Principal/HOLA and returned to school the following day.
2. The coach contacts the Region Coordinator and informs him of the player's decision. Prior to 9.30am a copy of the Confirmation of Report Form is faxed to the Regional Coordinator.
3. The Region Coordinator contacts the Schools Competitions Manager and informs him of the decision. The Schools Competitions Manager will notify any relevant community/school sporting bodies affected by the suspension.

### **DECISION: DISPUTE THE CHARGE**

If the player chooses this course of action, the following must occur:

1. The player must notify his coach of his decision prior to school the following day.
2. The coach must notify the Region Coordinator (prior to 9.30am), that a tribunal hearing needs to be convened.
3. The Regional Coordinator then notifies the Schools Competitions Manager to arrange tribunal proceedings.

***NOTE: The coach is responsible for arranging advocacy for a player should that player choose to dispute the charge.***

### **ARRANGING THE HEARING**

To ensure that the case in question is resolved as quickly as possible, the following procedure should be observed by the Schools Competitions Manager.

1. Arrange the case to be heard at the offices of the WAFC (Patersons Stadium). The case should be heard as soon as possible following the date of the charge.
2. Arrange for a panel of three delegates to attend the hearing. These should consist of:  
Chairman, Secondary School Football Advisory Committee  
Community Football Council or WAFC representative  
School Sport WA representative  
If one of these parties is unavailable then a representative of the SSFAC shall be the substitute.
3. Contact the teacher/coach of the player charged and informs them of the time and location of the hearing.
4. Contact the teacher/coach of the player infringed against (if required), and informs them of the time/location of the hearing.
5. Contact the Umpire Coordinator with the above-mentioned details and request he arrange for the charging umpire to attend the hearing.

### **MISCONDUCT**

- The Coach is the key to a team's behaviour both on and off the field. All coaches are required to attend a coaches meeting with the Region Coordinator.
- Coaches who deliberately break the 'Codes of Behaviour' will be asked to step down.
- The send off rule will be applied in all games.
- Red and Yellow Cards will be used as in line with WAFC standard Order Off Rule. That is:
- Any Player or Official receiving a Red Card is automatically reported and shall take no further part in any match conducted on the day the offender was reported and is required to attend a Protests and Disputes Tribunal or where applicable, request the offer of the prescribed penalty.
- If a team's conduct is deemed by the umpires as not upholding the Codes of Conduct for the competition, behaviour points may be withheld.
- An independent Tribunal consisting of representatives as listed in point 2 above will hear any major serious charges.

***ANY PLAYER OR OFFICIAL SUSPENDED BY EITHER A TRIBUNAL OR PRESCRIBED PENALTY WILL NOT BE PERMITTED TO PLAY, COACH OR PARTICIPATE IN ANY CAPACITY, IN ANY AFFILIATED DISTRICT COMPETITION INCLUDING SCHOOLS, SENIOR METROPOLITAN, JUNIOR COMMUNITY FOOTBALL OR REGIONAL FOOTBALL, FOR THE DURATION OF THE PENALTY.***

## STANDARD RANGE OF PENALTIES FOR REPORTABLE OFFENCES:

\* The WAFC Manager Community Development will adjudicate on any anomalies, inconsistencies or interpretive issues that arise in relation to the range of penalties. Any request for rulings will be initiated by the District Competition Director in writing to the WAFC Manager Community Development.

The *Standard Range of Penalties* shall apply to any Player or Official found guilty of a Specific Reportable Offence listed in Law 19.2.2 of the Laws of Australian Football or as described in the Rules and Regulations of the Controlling Body.

Where an Offender commits two (2) or more offences within the current 2 year period, then the “Second Offence” Range of Penalties shall be used to determine the penalty.

The “Second Offence” Range of Penalties have been set at double the “First Offence” Range of Penalties to clearly signify that repeat offenders will not be tolerated.

In determining an Offender’s penalty, the Tribunal shall use the *Standard Range of Penalties* and may increase the penalty after taking into consideration any injury sustained by a victim and/or any previous convictions of the offender prior to the last 2 years of the Tribunal sitting. The use of Suspended Sentences may be used as an additional penalty to the *Standard Range of Penalties*.

The Tribunal shall **not reduce** the minimum *Standard Range Penalties*, unless mitigating circumstances are established at the hearing. If mitigating circumstances are established, The Tribunal Chairman shall state and record the circumstances on the *Standard Disciplinary Record of Tribunal Proceedings* form.

## THE STANDARD RANGE OF PENALTIES

(RELATING TO SPECIFIC REPORTABLE OFFENCES UNDER LAW 19.2.2)

### (a) Making contact with an umpire;

**1<sup>st</sup> Offence:** Range: 4 weeks to 2 years

*negligent 4-10 weeks, reckless 10 weeks- 1 year, intentional 1 -2 years*

**2<sup>nd</sup> Offence:** Range 8 weeks to 4 years

*negligent 8-20 weeks, reckless 20 weeks- 2 years, intentional 2 -4 years*

### Striking an Umpire;

**1<sup>st</sup> Offence:** Range: 2 years to Life

*Negligent 2-4 years, reckless 4-10 years, intentional 10 years – Life*

**2<sup>nd</sup> Offence:** Range: 4 years to Life

*Negligent 4-8 years, reckless 8-20 years, intentional 20 years – Life*

### (b) Attempting to make contact with an Umpire;

**1<sup>st</sup> Offence:** Range: 2 weeks to 1 year

*Negligent 2-5 weeks, reckless 5-10 weeks, intentional 10 weeks - 1 year.*

**2<sup>nd</sup> Offence:** Range: 4 weeks to 2 years

*Negligent 4-10 weeks, reckless 10 weeks – 1 year, intentional 1-2 years*



**Attempting to strike an Umpire;**

**1<sup>st</sup> Offence:** Range: 1 year to 10 years  
*Negligent 1-2 years, reckless 2-5 years, intentional 5-10 years*

**2<sup>nd</sup> Offence:** Range: 2 years to Life  
*Negligent 2-4 years, reckless 4-10 years, intentional 10 years -Life*

**(c) Using abusive, insulting, threatening or obscene language towards or in relation to an Umpire;**

**1<sup>st</sup> Offence:** *abusive/obscene 2-4 weeks, insulting/threatening 4-10 weeks*

**2<sup>nd</sup> Offence:** *abusive/obscene 4-8 weeks, insulting/threatening 8-20 weeks*

**(d) Behaving in an abusive, insulting, threatening or obscene manner towards or in relation to an Umpire;**

**1<sup>st</sup> Offence:** *abusive/obscene 2-4 weeks, insulting/threatening 4-10 weeks*

**2<sup>nd</sup> Offence:** *abusive/obscene 4-8 weeks, insulting/threatening 8-20 weeks*

**(e) Disputing a decision of an Umpire; ( Prescribed Penalty offer – 1 week)**

**1<sup>st</sup> Offence:** *Yellow Card by Umpire – Cool Off for 15 minutes*

**2<sup>nd</sup> Offence:** *1 week*

**(f) Use of an Obscene gesture; ( Prescribed Penalty offer – 1 week)**

**1<sup>st</sup> Offence:** *1-2 weeks*

**2<sup>nd</sup> Offence:** *2-4 weeks.*

**(g) Intentionally, recklessly or negligently:-**

**(i) Kicking another person;**

**1<sup>st</sup> Offence:** Range: 2-10 weeks  
*negligent 2 weeks, reckless 3-6 weeks, intentional 6-10 weeks*

**2<sup>nd</sup> Offence:** Range: 4-20 weeks  
*negligent 4 weeks, reckless 6-12 weeks, intentional 12-20 weeks*

**(ii) Striking another person;**

**1<sup>st</sup> Offence:** Range: 2-10 weeks  
*negligent 2 weeks, reckless 3-6 weeks, intentional 6-10 weeks*

**2<sup>nd</sup> Offence:** Range: 4-20 weeks  
*negligent 4 weeks, reckless 6-12 weeks, intentional 12-20 weeks*

**(iii) Tripping another person whether by hand, arm, foot or leg;**

**1<sup>st</sup> Offence:** Range: 2-10 weeks  
*negligent 2 weeks, reckless 2-4 weeks, intentional 4-10 weeks*

**2<sup>nd</sup> Offence:** Range: 4-20 weeks  
*negligent 4 weeks, reckless 4-8 weeks, intentional 8-20 weeks*

- (iv) **Engaging in Time Wasting; ( Prescribed Penalty offer – 1 week)**  
*1<sup>st</sup> Offence: Yellow Card by Umpire – Cool Off for 15 minutes*  
*2<sup>nd</sup> Offence: 1 week*
- (v) **Charging another person; ( refer to law 15.4.4)**  
*1<sup>st</sup> Offence: Range: 2-10 weeks*  
*negligent 2 weeks, reckless 3-6 weeks, intentional 6-10 weeks*
- 2<sup>nd</sup> Offence: Range: 4-20 weeks*  
*negligent 4 weeks, reckless 6-12 weeks, intentional 12-20 weeks*
- (vi) **Throwing or pushing another player after that player has taken a Mark, disposed of the football or after the football is otherwise out of play; (Prescribed Penalty offer – 1 week)**  
*1<sup>st</sup> Offence: Yellow Card by Umpire – Cool Off for 15 minutes*  
*2<sup>nd</sup> Offence: 1 week*
- (vii) **Engaging in rough play against an opponent which in the circumstances is unreasonable;**  
Examples such as but not limited to: Using hands to claw, gouge or scratch an opponent in the region of the head, including the face, mouth, eyes, nose, and ears; Spear Tackles, Head Butting, Biting, Elbowing, Kneeing, Choking, Head Locking, Swinging an arm to the head region (“Coat Hanger”), Making unreasonable contact to an opponent who is marking or attempting to mark the football.
- 1<sup>st</sup> Offence: Range: 2-10 weeks*  
*negligent 2 weeks, reckless 3-6 weeks, intentional 6-10 weeks*
- 2<sup>nd</sup> Offence: Range: 4-20 weeks*  
*negligent 4 weeks, reckless 6-12 weeks, intentional 12-20 weeks*
- (viii) **Engaging in a melee, except where a player’s sole intention is to remove a teammate from the incident; (Prescribed Penalty offer – 1 week)**  
*1<sup>st</sup> Offence: Yellow Card by Umpire – Cool Off for 15 minutes*  
*2<sup>nd</sup> Offence: 1 week*
- (ix) **Kicking or otherwise causing the football to hit any part of a stadium roof’s structure;**  
*Not applicable in Western Australia*  
*1<sup>st</sup> Offence: 1 week or a Fine equivalent to a match payment*  
*2<sup>nd</sup> Offence: 2 weeks or a Fine equivalent to 2 match payments*
- (x) **Spitting at or on another person;**  
*1<sup>st</sup> Offence: Range: 2-4 weeks*  
*negligent 2 weeks, reckless 2-3 weeks, intentional 3-4 weeks*
- 2<sup>nd</sup> Offence: Range: 4-8 weeks*  
*negligent 4 weeks, reckless 4-6 weeks, intentional 6-8 weeks*

- (h) **Attempting to kick another person; ( Prescribed Penalty offer – 1 week)**  
*1<sup>st</sup> Offence: Range: 1-5 weeks*  
*negligent 1 week, reckless 1-2 weeks, intentional 2-5 weeks*
- 2<sup>nd</sup> Offence: Range: 2-10 weeks*  
*negligent 2 weeks, reckless 2-4 weeks, intentional 4-10 weeks*
- (i) **Attempting to strike another person; ( Prescribed Penalty offer – 1 week)**  
*1<sup>st</sup> Offence: Range: 1-5 weeks*  
*negligent 1 week, reckless 1-2 weeks, intentional 2-5 weeks*
- 2<sup>nd</sup> Offence: Range: 2-10 weeks*  
*negligent 2 weeks, reckless 2-4 weeks, intentional 4-10 weeks*
- (j) **Attempting to trip another person whether by hand, arm, foot or leg; ( Prescribed Penalty offer – 1 week)**  
*1<sup>st</sup> Offence: Range: 1-5 weeks*  
*negligent 1 week, reckless 1-2 weeks, intentional 2-5 weeks*
- 2<sup>nd</sup> Offence: Range: 2-10 weeks*  
*negligent 2 weeks, reckless 2-4 weeks, intentional 4-10 weeks*
- (k) **Intentionally shaking a goal or behind post when another player is preparing to Kick or is Kicking for Goal or after the Player has Kicked a Goal and the ball is in transit; (Prescribed Penalty offer – 1 week)**  
*1<sup>st</sup> Offence: 1 week*  
*2<sup>nd</sup> Offence: 2 weeks*
- (l) **Wrestling another person; (Prescribed Penalty offer – 1 week)**  
*1<sup>st</sup> Offence: Yellow Card by Umpire – Cool Off for 15 minutes*  
*2<sup>nd</sup> Offence: 1 week*
- (m) **Using abusive, insulting, threatening or obscene language; ( Prescribed Penalty offer – 1 week)**  
*1<sup>st</sup> Offence: abusive/obscene 1-2 weeks, insulting/threatening 2-5 weeks*  
*2<sup>nd</sup> Offence: abusive/obscene 2-4 weeks, insulting/threatening 4-10 weeks*
- (n) **Failing to leave the playing surface when directed to do so by a field umpire; (Prescribed Penalty offer – 2 weeks)**  
*1<sup>st</sup> Offence: 2 weeks*  
*2<sup>nd</sup> Offence: 4 weeks*
- (o) **Wearing boots, jewellery or equipment prohibited under Law 9; (Prescribed Penalty offer – 1 week)**  
*1<sup>st</sup> Offence: Yellow Card by Umpire – Cool Off for 15 minutes*  
*2<sup>nd</sup> Offence: 1 week*

**(q) Any act of misconduct. (Prescribed Penalty offer – 2 weeks)**

Examples such as but not limited to: Indecent Exposure, Biting, Instigating a Melee, Failing to follow the Direction of a Field Umpire or any Behaviour Detrimental to Football.

**1<sup>st</sup> Offence:** 2-4 weeks

**2<sup>nd</sup> Offence:** 4-8 weeks

**or Law 20.2(f) below – misconduct of a serious nature**

(RELATING TO THE SPECIFIC REPORTABLE OFFENCE UNDER THE ORDER OFF LAW 20.2)

**20.2(f) An act of misconduct if the Umpire is of the opinion that the act constituting misconduct is serious in nature;**

**1<sup>st</sup> Offence:** 3-6 weeks

**2<sup>nd</sup> Offence:** 6-12 weeks

Examples such as but not limited to **serious** acts of misconduct: Indecent Exposure, Biting, Instigating a Melee, Failing to follow the Direction of a Field Umpire or any Behaviour Detrimental to Football.

## **INVESTIGATION PROCEDURES / COMPLAINTS & APPEALS**

Any school may refer a protest or charge, or report any infringement of the rules of the Laws of Australian Rules Football against any other school, player or official. School generated complaints may be lodged with the **SSFAC** within 48 hours of an alleged incident, on an official school letterhead signed by the school Principal and/or HOLA making the complaint on behalf of his school.

The **SSFAC** will determine whether an INVESTIGATIONS Panel, Appeals Committee or P & D tribunal will be convened to deal with any complaints that may not fit within normal disputes processes. All complaints will be dealt with in a time frame suitable to the **SSFAC**.

The **SSFAC** may request either written or in person accounts relevant to the investigation from either of the schools involved in the protest, charge or report. Both schools shall be given at least 24 hours notice to attend either an in person interview, tribunal or both.

Any school may appeal in writing against any imposed penalty by P & D Tribunal within forty eight (48) hours of receiving notification of this penalty. The **SSFAC** shall consider any such appeal, which must be accompanied by new evidence.

The decision of the **SSFAC** in regard to any appeal shall be **final** and in the event of a failed appeal. The **SSFAC** may ask for the matter to be referred to the WAFDCD for further consideration and a final determination.

The **SSFAC Chairman** reserves the right to accept or refuse the lodgement of any other complaint outside of the usual processes.

### **PROTESTS & DISPUTES TRIBUNAL**

A Protests & Disputes Tribunal will be convened by the **SSFAC**. Schools may appeal to the **SSFAC** against the severity of tribunal penalties in writing, accompanied by new evidence within forty eight (48) hours of receiving notification of the original penalty.

## SCHOOL and COMMUNITY FOOTBALL

- The WAFC sees the delivery of Australian Football as a partnership between schools and community groups.
- Schools recognise that sport is an aspect of the school curriculum and is an integral part of an individual's development.
- Community groups recognise the school system as an integral and positive part of football development and assist and encourage participation.
- Schools and community groups/clubs should establish links to promote continuity of delivery.
- The use of existing school facilities by community groups is encouraged.
- Schools should be receptive to interaction with community groups within and outside of school hours.
- The WAFC works closely with the following key advisory groups in designing and implementing quality football education programs
  - Education Advisory Group
  - Primary School Football Advisory Committee
  - Secondary School Football Advisory Committee
  - Schoolgirls Football Advisory Committee

## PUBLIC STATEMENT

Public statements can only be made by the designated **WAFC spokesperson**.

## SCHOOL RESPONSIBILITIES

- Attend competition launch / coaches' meeting prior to the start of the competition.
- Supply timekeeper for HOME games.
- Supply interchange steward for finals games only.
- Supply correctly attired boundary umpire and goal umpire.
- Ensure all players are **suitably** attired in school playing apparel, with correct socks, shorts, boots and jumpers.
- Supply Level One accredited coach (i.e. Level One).
- **Home team** to forward results to your WAFC Football Development Officer following all fixtures. Please ensure full umpire's details, including address, are completed on match report form.
- If applicable, apply in writing to the WAFC for permission to include Year 10 students in the team.

## RACIAL VILIFICATION

### 1. AN ALLEGED INCIDENT

Conduct that threatens, disparages, vilifies or insults another person on the basis of that person's race, religion, colour, descent or national or ethnic origin. This conduct must take place between bona-fide registered players of the district and does not exclude incidents off the playing arena.

### 2. RESOLUTION

The Clubs and individuals concerned will take immediate action to resolve the matter. This process **MUST** be in camera and no public statement is allowed by the clubs, players or any representative of the club(s) involved.

### 3. A COMPLAINT

This can be made by an JCC, DFDC, umpire, a player or a club. It must be lodged with the Junior Competition Committee by 5pm on the first working day after the incident.  
Is it the first complain against this player?

YES

NO

#### 4 (a). CONCILIATION

Refers the matter to conciliation, to be resolved within three working days of the incident. The players meet with club representatives and the Tribunal. The complaint is heard in camera.

#### 4 (b). DISTRICT TRIBUNAL

The District Tribunal to make a determination on the matter in accordance with the guidelines set out.

### 5. DECISION

If the District Tribunal decides:  
is the Conciliation successful?

NO

YES

**COMPLAINT  
RESOLVED**

## TALENT - MALE

### WA STATE ACADEMY

The WA State Academy program is an elite football environment that focuses on individual player development. It is centred on the development of the person and their ability to contribute in a team environment.

The Academy is divided into two separate but closely aligned programs. The WA 16's State Academy is designed for players aged 16 and acts as the initial introduction to a state based elite football program. The WA 18's State Academy is the next phase of the Academy journey and caters for 17 and 18 year olds.

### WA STATE ACADEMY - PHILOSOPHIES

- To select the most talented developing players available ie players who demonstrate the most distinct attributes to progress into WAFL senior football and / or AFL football;
- A year long commitment to academy members;
- A holistic approach to player development;
- Emphasise individual player development within a team context;
- Academy staff to work in partnership with WAFL staff to develop individual players;
- Involvement in the Academy does not automatically include participation in the NAB National Championships.

### WA STATE ACADEMY - OBJECTIVES

- To create an environment that is enjoyable, positive and fosters individual learning styles;
- Contribute to the development of skills, physical attributes, football knowledge, personal growth and self esteem of all players;
- The Academy to be a key tool in the broader strategy of developing coaches;

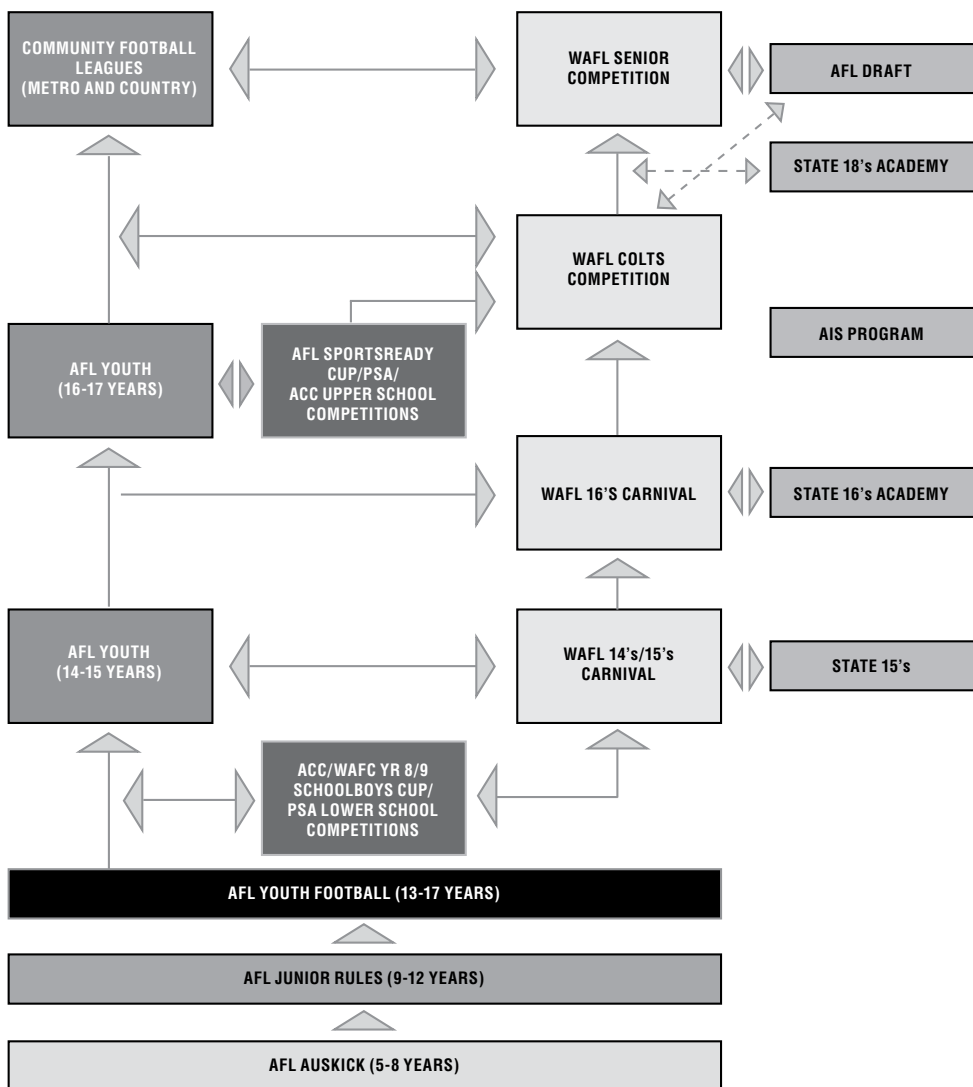
### WA STATE ACADEMY – SELECTION PROCESS

- Nominations from WAFL clubs;
- Upon viewing the nominations and discussion with colts coaches and AFL Recruiting staff, State Academy selectors finalise composition of squad;
- The preferred pathway for all players is to be playing with their WAFL club;
- Selectors have the capacity to add players to the Academy as the season progresses;

### TALENT IDENTIFICATION

- Providing a clear pathway to the top in a sport with limited international opportunity is vital to ensure the talented “natural” athlete selects Australian Football at an early age.
- The steps from junior mass participation to zone representation/opportunities at the 14s age level, leading to functional talent identification at intrastate and interstate competition from 15-18 clearly defined.
- The pinnacle opportunity for a junior Australian footballer for both optimal performance and identification is the National Championships conducted annually for players 16 and 18 years and under.
- The pathway leads from junior level to senior football via Country or State Leagues with the AFL as the clear destination for those wishing to achieve the ultimate. Players wishing to pursue an AFL career in WA must do so via the WAFL.
- Following is the career pathway for talented players:

## WA MALE FOOTBALL PATHWAY



The above pathway is endorsed by the WAFC as the recommended progression for players playing football within Western Australia.

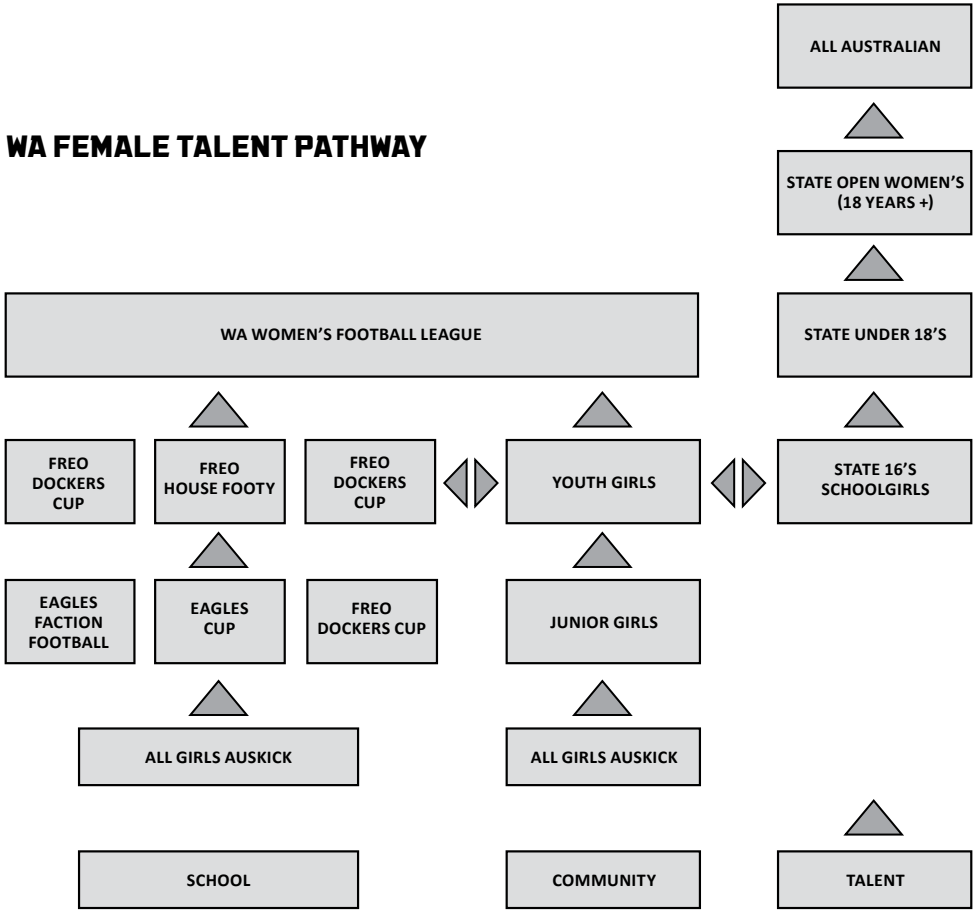
### STATE REPRESENTATION GAMES

In reference to the NAB AFL Championships, State representation should be credited with local home and away games for their registered age group and team. This includes all competitions that hold a final series e.g. WAFL, District & Country.





## WA FEMALE TALENT PATHWAY



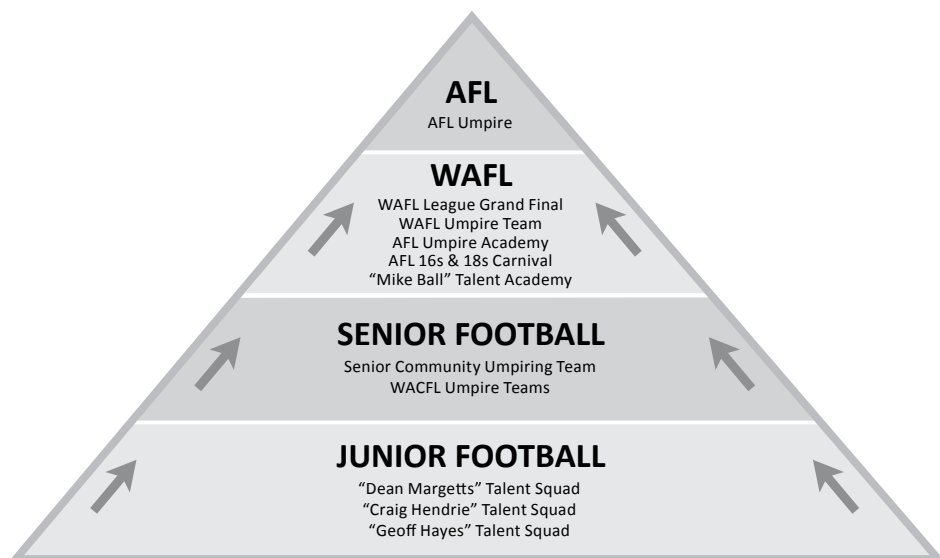
## UMPIRING - GIVE UMPIRING A GO!

**Umpiring** teaches you 'life skills' such as tolerance, assertiveness, leadership and decision making.

**Umpiring** is a great way for both males and females to keep fit and involved in the game.

**Umpiring** allows you to earn money while servicing the game you love.

**Umpiring** is a great opportunity. Do you have what it takes?



TO JOIN A JUNIOR UMPIRING GROUP, PLEASE GO TO: [www.wafootball.com.au/umpiring/contacts](http://www.wafootball.com.au/umpiring/contacts)

For further information contact Dean Margetts, Umpire Development Manager on 9381 5599 or [dmargetts@wafc.com.au](mailto:dmargetts@wafc.com.au)



*"It's a pretty obvious point, but every AFL umpire has to start somewhere... I started in juniors in 1996. I loved umpiring and the benefits that came with it from the first training night and the first game I umpired. It was a bit different though, at first, having the whistle on the fingers when I had been so used to just playing the game. But the knowledge and coaching I received at junior level gave me an outstanding foundation to allow me to perform as I do in the AFL competition today."*

DEAN MARGETTS, AFL FIELD UMPIRE.

**WIN, WIN, WIN!**

Tell us what you love about WA footy to win great weekly prizes.

Enter by using **#WAFooty** on Twitter or Instagram or post to our WA Football Facebook page to win.

# GOTTA LOVE #WAFOOTY

TELL US WHAT YOU LOVE ABOUT **#WAFOOTY** TO **WIN** GREAT WEEKLY PRIZES!

   [WAFOOTBALL.COM.AU](http://WAFOOTBALL.COM.AU)

## FOR THE LOVE OF FOOTY

We love this game for many reasons.

For the bandwagon fans. The diehard fans.

The one-eyed fans. The hoodoos, voodooos and game time blues.

The WAFL players you just have to see, wanna be and the fresh faced game changing new draftee.

Our Auskick Mums and Dads, the amateur footy lads and the latest footy fads.

Whether you're a family man, a fanatical gran or a country footy fan *anyone can be part of the game in 2015.*



FOOTBALL COMMISSION INC.