

WAFC YEAR 8/9
SCHOOLBOYS CUP

2013



F FOOTY PLUS
GROW THE GAME



WEST AUSTRALIAN
FOOTBALL COMMISSION INC.

CO-ORDINATED BY THE WA FOOTBALL COMMISSION



CONTENTS

Preface	02
WAFC Year 8/9 Schoolboys Cup Timeline	03
Winning Team 2012	04
WAFC Development Officers - Metropolitan	05
WAFC Development Officers – Country	06
Competition Format	07
Fixtures	07
Eligibility	09
The Second Tier Competition	10
Officials	13
Codes of Conduct	14
School Responsibilities	26
WAFC Development Officer Responsibilities	27
West Australian Football Commission Responsibilities	27
Trophies	27
Talent	28
Umpiring	30

DID YOU KNOW?

- The competition has run in various forms since 1983.
- Whilst originally a Year 10 competition, it has evolved to cater specifically for lower school boys in Year 9, with the inclusion of the most talented Year 8's in each school.
- The competition is played in metropolitan WAFL Districts and Country Regions, with the aim of producing a champion school to represent each of the nine WAFL clubs, who then progress to Quarter-Final, Semi-Final and Grand Final stage.
- In 2012, over 6,000 students from country and metropolitan schools participated in the WAFC Year 8/9 Schoolboys Cup

PREFACE

Welcome to the WAFC Year 8/9 Schoolboys Cup for 2013. The competition continues to grow and attract players, coaches, umpires and volunteers from all across our state.

Our core objective remains to provide a professional competition with the capacity to deliver a safe, fun and fair environment for every stakeholder.

I would like to take this opportunity to acknowledge those who have taken on the roles of coaches, managers, officials and support staff, and to thank you all sincerely for your efforts. Without this support the competition would not be what it is.

I would also like to acknowledge the work of our Metropolitan and Regional Development staff for their coordination and management of the competition.

Finally, my best wishes go to all of the players, coaches and umpires for a successful and enjoyable 2013 WAFC Year 8/9 Schoolboys Cup.

CLAYTON ANDERSON
Schools Competitions Manager
West Australian Football Commission





2013 WAFC YEAR 8/9 SCHOOLBOYS CUP TIMELINE

TERM	DAY	DATE	EVENT
1	Monday	February 4	Start of Term 1 / Nominations Open
	Friday	April 19	End of Term 1 / Nominations Close
2	Friday	May 3	Draft Fixtures / Carnival Dates published
	Monday	May 13	Competition commences
	Thursday	May 16	Coaches' District Meetings
3	Monday	July 29	Metropolitan v Country Champion games commence
	Monday	August 5	Elimination Finals commence (Claremont v South Fremantle)
	Monday	August 12	Quarter Finals commence
	Monday	August 19	Semi Finals commence
	TBC	August 30	Grand Final - Venue TBC
		Aug 31 - Sept 1	










PREVIOUS WINNERS:

1983	Belmont SHS	1998	Carine SHS
1984	Christ Church Grammar School	1999	Carine SHS
1985	Aquinas College	2000	Aquinas College
1986	Hamilton SHS	2001	Mazenod College
1987	Trinity College	2002	Trinity College
1988	Guildford Grammar School	2003	Trinity College
1989	Narrogin SHS	2004	Sacred Heart College
1990	Aquinas College	2005	Trinity College
1991	Northam Districts	2006	Hale School
1992	Northam SHS	2007	Trinity College
1993	Guildford Grammar School	2008	Trinity College
1994	Corpus Christi College	2009	Trinity College
1995	South Avon	2010	Trinity College
1996	Corpus Christi College	2011	Trinity College
1997	Aquinas College	2012	Darling Range Sports College

2012 WAFC year 8/9 schoolboys Cup Champions – Darling Range Sports College



METROPOLITAN DEVELOPMENT STAFF

DISTRICT	CONTACT	MOBILE	EMAIL
 Claremont	Sam Cousens	0438 838 768	sam.cousens@claremonttigers.com
 East Fremantle	Daren Bell	0438 952 487	daren.bell@effc.com.au
 East Perth	Brendan McFaull	0430 868 512	bmcfaull@eastperthfc.com.au
 Peel	Lachlan Harris	0438 677 700	developmentofficer@peelthunder.com.au
 Perth	Anthony Balcombe	0412 676 857	do@perthdemons.com.au
 South Fremantle	Louise McKenry	0421 249 477	louise@sffc.com.au
 Subiaco	Matt Lamb	0430 969 906	m.lamb@subiacofc.com.au
 Swans	Chelsea Randall	0430 868 251	crandall@swandistrictsfc.com
 West Perth	Jeff Brown	0409 084 483	development@falconsfc.com.au



REGIONAL DEVELOPMENT STAFF

REGION	CONTACT	MOBILE	EMAIL
Goldfields	Gemma Harrison	0417 179 463	gharrison@wafc.com.au
Great Southern	Tom Moir	0428 428 440	tmoir@wafc.com.au
Kimberley	Michael Farmer	0407 658 698	farmer@garnduwa.com.au
Mid West	Paul Pirrottina	0429 914 220	ppirrottina@wafc.com.au
Midlands	Glen Collins	0417 920 817	gcollins@wafc.com.au
Pilbara	Nicole Graves	0417 338 300	ngraves@swandistrictsfc.com
South West	Shane Atherton	0417 980 508	satherton@wafc.com.au
Wheatbelt	Steven Boughton	0419 859 576	sboughton@wafc.com.au

COMPETITION FORMAT

Metropolitan

- Schools will be grouped according to WAFL District boundaries based on the school's street address.
- Matches will be played to determine each WAFL District's Metropolitan Champion school.

Country

- Schools will be grouped geographically to minimise travel until regional winners are decided (Midwest / Gascoyne, Midlands, Wheatbelt, Goldfields, Great Southern and South West), who will then compete against their respective WAFL Metropolitan Champion school to determine overall WAFL club zone winner. All country schools will be advised of their allocated carnival day by their WAFC Football Development Officer by the end of Term 1.

FIXTURES

- AN ALLOCATED PLAYING DAY WILL BE DETERMINED BY YOUR WAFC DEVELOPMENT OFFICER IN CONSULTATION WITH COMPETING SCHOOLS
- Any changes to fixtures or venues must **first** be approved by the WAFC Football Development Officer based at your zoned WAFL Club.

Length of Competition

The first games will be played on the week commencing **Monday 13 May 2013**. The number of games will depend largely upon the number of schools in each district / region.

Grand Final

The Grand Final of the WAFC Year 8/9 Schoolboys Cup will be played in the week starting Monday 26 August. Venue and Date to be confirmed

Fixtures / Results / Ladders

Details can be viewed via your WAFL District website.



ELIGIBILITY

- All schools which have students in Years 8 and 9 are eligible to participate.
- Players must be full time students at the school to be eligible to play.
- A player enrolled in Year 8 is deemed to be a Year 8
- A player enrolled in Year 9 is deemed to be a Year 9
- A player enrolled in Year 10 is deemed to be a Year 10
- All teams must have a minimum of five (5) Year 8 students included for each game, three (3) of whom must be on the field at any one time.
- Small schools will receive concessions to enable them to be competitive:
 - (i) District High Schools may combine with other District High Schools if the combined Year 8 and 9 male population does not exceed 115 students.
 - (ii) Individual schools or combinations may play the following number of Year 10 students, dependent on population. **population does not exceed 115 students.**
 - (iii) Individual schools or combinations may play the following number of Year 10 students, dependent on population.
- Students in year 7 are not permitted to participate in the WAFL Year 8/9 Schoolboys Cup. The Eagles Cup and Freo Dockers Shield exists to meet the needs of these students. Issues relating to liability rest squarely with the school

TOTAL NUMBER OF YEAR 8 & 9 MALES	MAXIMUM NUMBER OF YEAR 10'S ALLOWED
69 or less	3
70 to 99	2
100 to 114	1
115 and above	Nil

Eligibility

- The quoted number of Year 10's as per above table refers to the number of Year 10's included for each game.
- Schools that play more than the prescribed quota of Year 10's or less than the prescribed quota of Year 8's will forfeit **all** points for games where this disregard for the rules occurred and jeopardize their potential to be accepted for nomination in 2013.
- Schools wishing to play Year 10 students in their team must apply in writing to Clayton Anderson: Schools Competitions Manager. Please ensure any request to play Year 10's includes the following:
 - (i) Name, height/weight, date of birth of Year 10 student/s the school wishes to play.
 - (ii) Current enrolment numbers of males in Year 8 and 9
 - (iii) Be signed by the HOLA Health and Physical Education **and** the Principal.
This must be approved by Schools Competitions Manager and relevant WAFC Development Officer **prior** to your first fixture.
- **Year 10 players involved in development squads or elite state programs are ineligible for selection.**
- **To ensure that there are no discrepancies with player eligibility, all competing schools will be required to submit a team sheet for each finals game they participate in. A copy must be provided to the Ground Manager for each game.**

THE SECOND TIER COMPETITION

At the 1996 Review Meeting, it was agreed by the competition organising committee that in keeping with the basic objective of the competition to have participation by **all** secondary schools in this State in the competition, a second tier competition would be **trialed** parallel with the major competition.

The “Second Tier” is designed for schools with a low number of enrolments in lower school or for schools where the status of Australian football is particularly low.

The competition will be made available again in 2013 under the following criteria:

- Schools must nominate for this competition by ticking the appropriate box on the nomination form.
- The WAFC and the WAFC Football Development Officer reviews all nominations and reserve the right to change the division that a school may have nominated for to achieve a balanced competition.
- Curtain Raisers will not be afforded to this tier.
- Winning school of the Second Tier will receive a trophy presented by their zoned WAFL District.
- The aim of the Second Tier competition is for schools to strengthen the status of Australian Football within that school and to return or join the main body of the competition as **soon as possible**.

CONDITIONS OF PLAY

The laws governing the competition are those stated in the AFL Laws of Australian Football with the following changes:

Starting Times and Duration of Matches

- All games must start at 4pm. Games can start as late as 4.15pm only if both schools and your WAFC Football Development Officer have been duly advised. Games will be of two 20 minute halves with no time on, with a five (5) minute interval at half time. All finals games (Metropolitan v Country games onwards) will be played over 4 x 15 minute quarters with no time on.

Interchange

- Each team is permitted up to seven (7) interchange players unless both coaches agree to increase that number **prior** to the commencement of the game. Seven (7) will be the maximum in all finals games.
- For all games from Metropolitan v Country Champion onward, Year 8 students (Year 10 students where applicable) will be required to wear red tape around their right arm as a means of identifying them as a Year 8 or Year 10 student.

Uniforms

All teams are to be in uniform playing gear including:

- Numbered school jumpers
- Uniform football shorts
- Correct socks

Prior to the Game

The home team is to line up in the centre of the ground and wait for the away team to line up opposite. Players, Umpires and Coaches are to shake hands, both before and after the game.

At the Completion of the Game

The two coaches are to bring teams together to make any appropriate comments and to complete the match report. The Umpires are requested to participate. **The completed match report is to be faxed to your WAFC Development Officer (HOME team responsibility).**

Conditions of Play

Every endeavour must be made to ensure games are played at the fixtured time and place. In the exceptional circumstances where a fixture cannot be played at the scheduled time, permission must be sought from your WAFC Football Development Officer before re-fixturing. If a team forfeits or if conditions are not met, a 10-goal win will be awarded to the non-offending team, plus four premiership points. The offending team will be invoiced for umpiring costs incurred.

In the circumstances where an umpire does not arrive, the game must be played, with umpiring arrangements made to the mutual satisfaction of both teams.

Grounds

Games are to be played at the home schools nominated oval. School ovals are to be used where possible to allow other students to support their teams. Where a school has nominated a junior football club oval or council oval as its home ground, it is that schools responsibility to ensure that the ground is ready for each home game, and liaise with the respective club or council accordingly.

Ovals however must be of an adequate size. For youth age matches the dimensions can range between 135m to 185m in length and 110m to 155m in width. **Ovals and playing arenas are to be in a safe playing condition – Goal and behind posts must be padded and cricket pitches covered. It is mandatory that visiting teams bring their goal post padding so that both goal and behind posts are covered. A game will not proceed where any posts and cricket pitches are uncovered.**

Home teams are responsible for markings – centre and goal squares, boundary line. Correct marking of the oval is essential. Visiting schools need to inspect the oval prior to the commencement of the game to make sure it is suitable to proceed. Any concerns should be highlighted to the Central Umpire prior to play commencing. The Central Umpire will have the final say as to whether the game will proceed. **(It is recommended that schools use the endorsed JLT match day checklist) JLT match day check lists can be obtained from your WAFC development officer.**

Safety

Spectators are to be kept from the boundary line and goal areas. Control of spectators is the responsibility of the competing schools. **Schools must have a first aid kit including ice or ice packs, along with a stretcher at the game.** Access to telephone communication is mandatory. If a school has a nurse, their involvement both in training school sports trainers and/or being at the game should be encouraged.

Ball

Each competing team is to provide a leather football of a size approved for that competition. The home team shall provide the match ball. The away team is to provide a suitable spare football. The ball shall also be a WAFC agreed sponsored brand.

Drawn Matches

A draw will stand in home and away matches and two points will be awarded to each team, but not in finals. In these circumstances, 5 minutes each way will be played until a result is determined. If poor light or circumstances prevent play from continuing, the match shall be re-scheduled. In the event of a draw in a Curtin Raiser Grand Final, the game will be replayed at the first mutually available Wednesday after the drawn game.

A game will be deemed a final when it is an elimination game i.e. is not part of the regular weekly fixtures. The Ground Manager will make any decision on drawn games and in their absence the responsibility will fall on the Central Field Umpire(s). Refusal by any team to play 5 minutes each way will be deemed a **forfeit** on their behalf and the game will be awarded to the opposing side.

Privacy Policy

Team photographs or other images may be produced during the football season by the governing body (WAFC) and may be utilized for the promotion and development of football by the governing body. **Completion and lodgement of the Nomination Form indicates acceptance of this policy.**

PUBLIC LIABILITY

The WAFC has arranged public Liability Insurance for a sum insured of \$20,000,000 to cover its legal liabilities. The WAFC expects each school involved in Australian Football programs to maintain public liability insurance to sufficiently cover its legal liabilities. At its own discretion each school may want to consider purchasing personal accident insurance to protect against claims for non Medicare medical expenses arising from this Australian Football program, or any other school program.

TRAVEL ASSISTANCE

To assist with travel costs incurred by schools, a figure of \$5,000 will be available for disbursement at the conclusion of the competition, based on the total distance traveled by each school.

The assistance is calculated by providing a portion of the \$5,000 based on the proportion an individual school travels relative to the total distance travelled by all schools. (I.e. school 'x' travels 600km, the total distance travelled by all schools was 4,000km – school 'x' will receive 15% of the funds available.)

Applications for travel assistance close on Friday 6 September.

Resource Assistance Scheme

The Resource Assistance Scheme aims to financially assist football friendly schools in:

- Purchasing jumpers for a school football team/s. Schools entering more than one team in any registered WAFC competition will be given priority
- Assist with the purchasing of equipment to enhance the teaching of Australian Football within the school.

Schools will need to meet a set criteria (e.g. the school has an AFL School Ambassador, participates in competitions of at least 6 weeks in duration or has made a commitment to be involved in the near future) and that the provision of the 'grant' will lead to a potential growth in participation.

These grants will be determined on an individual needs basis and managed by the District / Regional Managers in consultation with the WAFC.

OFFICIALS

The Coach

The Coach is to be nominated by the school. If a teacher cannot be found, then the school should arrange for a suitable person from the local community to be interviewed by the school Principal and/or HOLA Health and Physical Education for the coaching position.

It is a condition of this competition that a teacher at the school must be associated with the team and in attendance for the duration of the game.

The Coach's role is paramount. He/she is responsible primarily for the on and off field actions of their players and therefore must set standards of discipline.

Field Umpires

WA Football supports a **ZERO TOLERANCE** stance against any form of umpiring or officials abuse. Any breaches of these codes will result in penalties and sanctions directed at the person responsible, the team and possibly the school.

WAFC Football Development Officers will appoint a umpire/s to officiate at each match. Further, the WAFC encourages qualified students or staff to submit their names to be included on the umpiring panel. Such persons will be paid for their services. Umpires are required to bring Red/Yellow cards to all games.

TEACHERS FROM SCHOOLS COULD BE APPROACHED TO UMPIRE WAFC YEAR 8/9 SCHOOLBOYS CUP GAMES WHEREVER NECESSARY. IF SCHOOLS FAIL TO NOTIFY THE UMPIRE'S COORDINATOR OF ANY ALTERATION TO/ OR FORFEIT OF A SCHEDULED MATCH, THE FORFEITING TEAM WILL BE INVOICED FOR THE UMPIRING COSTS INCURRED.

Goal Umpires

Each team must supply one mature goal umpire. He/she must have a white coat, goal flags and a scorecard. Goal umpires must check scores at half time and after the match. Field umpires are to supervise this.

Boundary Umpires

Each competing team shall supply a boundary umpire who shall be correctly attired and of sufficient knowledge and maturity to correctly throw the ball into play and carry out all other responsibilities of the position.

Finals Umpires

Will be organised by WAFC Development Officers in conjunction with the WAFC.

Should a field umpire not be available to officiate at any match the opposing coaches or team officials may agree to appoint any person to act in that capacity. In such case the appointed umpire shall have the same responsibilities and authority as any umpire appointed by the Umpires Coordinator.

Timekeeper

The home team is to supply a timekeeper who will have a siren or a hooter. A stopwatch is to be used at all times to ensure accurate times are maintained. The WAFC will supply a timekeeper for all curtain raiser matches unless advised otherwise.

Match Reports

These are the responsibility of the HOME team and are to be completed on the day and signed by the coaches and umpires. Offending players are to be noted in the report. **The report is to be forwarded to your WAFC Development Officer by 10.30am the day after the game. This is essential to compile accurate premiership tables.**

CODES OF CONDUCT

The major objective of Junior Football is to provide an opportunity for all children to play Australian Football in a safe environment designed to maximise the acquisition of skill and provide enjoyment (Fun). The following Codes of Conduct, if followed by all people involved in our junior game, should ensure the fulfilment of this important objective. The West Australian Football Development Council strongly advises that all persons involved be issued with copies of the appropriate code of conduct. WA Football supports acts of sportsmanship (hand shaking etc) between players, coaches, administrators, umpires etc.

ADMINISTRATOR'S CODE OF CONDUCT

- Ensure that equal opportunities for participation in sports are made available to all children, regardless of ability, size, shape, gender, age, disability or ethnic origin.
- Ensure that rules, equipment, length of games and training schedules take into consideration the age, ability and maturity level of participating children.
- Ensure that adequate supervision is provided by qualified and competent coaches and officials capable of developing appropriate sports behaviour and skill technique.
- Remember that children participate for enjoyment and play down the importance of rewards.
- Provide clinics aimed at improving the standards of coaching and officiating, with an emphasis on appropriate behaviour and skill technique.
- Ensure that parents, coaches, sponsors, trainers and participants understand their responsibilities regarding fair play.
- Modify rules and regulations to match the skill level of children and their needs.
- Condemn unsporting behaviour and promote respect for all opponents.
- Publicly encourage rule changes which will reinforce the principles of participation for fun and enjoyment.
- Ensure that your behaviour is consistent with the principles of good sporting behaviour.
- Make a personal commitment to keep yourself informed of sound officiating principles and the principles of growth and development of children.
- Ensure promotion, well-being and safety of umpires and encourage good sportsmanship before, during and after matches.
- Ensure positive player/umpire/relationships are continually developed.

COACH'S/TEACHER'S CODE OF CONDUCT

- Be reasonable in your demands on young players' time, energy and enthusiasm.
- Avoid over-playing the talented players. The "just-average" players need and deserve equal time.
- Remember that children participate for fun and enjoyment.
- Ensure that equipment and facilities meet safety standards and are appropriate to the age and ability of the players.
- Take into consideration the maturity level of the children, when scheduling and determining the length of practice times and competition.
- Develop team respect for the ability of opponents as well as for the judgment of officials and opposing coaches.
- Ensure positive coach / umpire relationships are continually developed.
- Follow the advice of a physician when determining when an injured player is ready to recommence training or competition.
- Keep yourself informed of sound coaching principles and the principles of growth and development of children.

- Create opportunities to teach appropriate sports behaviour as well as basic skills.
- Ensure that skill learning and appropriate sports behaviour have priority over highly structured competitions for young children.
- Help children understand the responsibilities and implications of their freedom to choose between fair and unfair play.
- Ensure knowledge of laws of game is such that you encourage the players to play the game and accept the role of the umpire.

Be aware of your obligations to adhere to all policies contained or referred to within this manual.

PARENT'S/SPECTATOR'S CODE OF CONDUCT

- Encourage children to participate, if they are interested.
- Encourage children to always participate according to the rules.
- Never ridicule or yell at a child for making a mistake or losing a game.
- Remember that children learn best from example. Applaud good plays by all teams.
- If you disagree with an official, raise the issue through the appropriate channels rather than questioning the official's judgment and honesty in public.
- Support all efforts to remove verbal and physical abuse from sporting activities.
- Recognise the value and importance of volunteer coaches.
- Remember that children play organised sports for fun. They are not playing for the entertainment of spectators only, nor are they miniature professionals.
- Condemn the use of violence in any form, be it by spectators, coaches, officials or players.
- Encourage players to follow the rules and the umpire's decisions.
- Demonstrate appropriate social behaviour by not using foul language, harassing players, coaches or umpires.

PLAYER'S CODE OF CONDUCT

- Play by the rules.
- Never argue with an official. If you disagree, discuss the matter with your coach or teacher after the game.
- Control your temper. Verbal abuse of officials or other players, or provoking an opponent is not acceptable.
- Work equally hard for yourself and for your team. Your team's performance will benefit, so will you.
- Be a good sport. Applaud all good plays whether they be by your team, opponent or the other team.
- Treat all players as you would like to be treated. Do not interfere with, bully or take unfair advantage of another player.
- Cooperate with your coach, team mates and opponents. Without them there would no competition.
- Play for the "fun of it" and not just to please parents and coaches.
- Avoid using derogatory language.
- Be prepared to take responsibility for your actions.

RUNNER'S/WATER STEWARDS CODE OF CONDUCT

- The runner SHOULD BE AN ADULT.
- The runner must be clearly identified.
- The runner's name must be entered in both team books.
- No abusive language or swearing.
- Support the decision of the umpires at all times and never question such decision.

UMPIRE'S CODE OF CONDUCT

- Modify rules and regulations to match the skill level of children and their needs.
- Compliment all participants on their efforts.
- Be consistent, objective and courteous in calling all infractions.
- Condemn unsporting behaviour and promote respect for all opponents.
- Ensure that the "spirit of the game" for children is not lost by using common sense and not over emphasising errors.
- Publicly encourage rule changes which will reinforce the principles of participation for fun and enjoyment.
- Ensure that your behaviour is consistent with the principles of good sporting behaviour. Actions speak louder than words.
- Make a personal commitment to keep yourself informed of sound officiating principles and the principles of growth and development of children.
- Avoid use of derogatory language based on gender.

REPORTS

The following personnel shall have the power to report any player or official for any breach of the laws of the game, codes of conduct, member protection policies or of the rules or By-laws of the **Secondary Schools Football Advisory Committee**.

- (a) Field Umpire
- (b) Umpires' Coach whilst in an observing capacity
- (c) Boundary umpires if officially appointed by the **Secondary Schools Football Advisory Committee**
- (d) Goal umpires if officially appointed by the **Secondary Schools Football Advisory Committee**
- (e) Stewards if officially appointed by the **Secondary Schools Football Advisory Committee**
- (f) Any member of the **Secondary Schools Football Advisory Committee**

Any player or official, who is to be reported, must be advised of such report prior to the commencement of the next quarter of the game, unless the offence occurs in the final quarter in which case advice to the Team Manager when passing on the official report sheet shall suffice.

REPORTED PLAYERS

A player against whom any charge has been proved at a hearing of the P&D Board or received a prescribed penalty during the current season, or any player who has received an automatic suspension (ONE WEEK) as a result of having been sent from the ground three (3) times during the season, shall be disqualified from participation in the voting for any Fairest and Best award.

Any player or official suspended by either a tribunal or prescribed penalty will not be permitted to play, coach or participate in any capacity, in any affiliated district competition including schools, senior metropolitan community football or regional football, for the duration of the penalty. The reverse also applies.

THE “YELLOW” CARDS



**ORDER OFF - COOL OFF
FOR 15 MINUTES PLAYING TIME**

**(For MINOR offences and any
Behaviour Detrimental to Football)**

FRONT OF YELLOW CARD

YELLOW CARD CONDITIONS

1. **AN OFFENDER ORDERED OFF FOR A YELLOW CARD OFFENCE CAN BE REPLACED IMMEDIATELY**
2. In the event that a Player or Official:
 - (a) Is issued with two Yellow Card offences on the day of the match, then the offender shall take no further part in the game but can be replaced immediately.
 - (b) When ordered off for a Yellow Card offence, fails to leave the field **immediately** when directed by the field umpire, then the offender shall be reported for misconduct and consequently be deemed to have committed a Red Card offence.

BACK OF YELLOW CARD

THE “RED” CARDS



FOOTBALL COMMISSION INC.

**ORDER OFF - STAY OFF
FOR THE REMAINDER OF THE MATCH**

(For REPORTABLE offences ONLY)

FRONT OF RED CARD

RED CARD CONDITIONS

**AN OFFENDER ORDERED OFF FOR A RED CARD OFFENCE
CANNOT BE REPLACED FOR 15 MINUTES game time**

1. The offending Player or Official shall attend a Protests and Disputes Tribunal or where applicable, request the offer a Prescribed Penalty.
2. A Player or Official who fails to leave the Arena **immediately** when directed by the umpire shall be reported for misconduct, the match shall be terminated and the offending person's team will forfeit the match.

BACK OF RED CARD

Step One: The Report

Should any player be reported, the umpire will provide a thorough description of the offence on the Match Report. In order for the matter to be dealt with quickly, he/she must take the following steps **immediately following the game**:

1. Notify the coach of the offending player that the report has been made against.
2. Outline the offence the player has been charged with.
3. Notify the opposing coach if a player on his team was involved in the incident and may be required to attend a tribunal hearing.
4. Notify the Umpire's Coordinator that evening of the report.

From here, it is the coach's responsibility to:

- a. Outline the player's options with regard to a penalty:
 - Accept a prescribed penalty
 - Proceed with a tribunal hearing
- b. Contact the Region Coordinator prior to 12pm the following day to notify them as to the player's decided option.
- c. If an opposing player has been offended against, his coach must too, contact the Region Coordinator by 12pm the following day to find out if the player is required at a tribunal hearing.
- d. Notify the Umpire's Coordinator that evening of the report.

Step Two: Player's Decision

Once being notified that a report has been lodged, the player has until the following morning to notify his coach of the decision he has made regarding the penalty. His options are to:

- a. Accept the umpire's decision and take a prescribed penalty, hence eliminating the need for an actual hearing.
- b. Dispute the umpire's decision and choose to have the case heard by the P & D Panel on the Thursday evening, or an evening arranged by the Schools Competitions Manager.
In either case, the player must have confirmation from a parent/guardian and/or School Principal/HOLA that the decided course of action meets with their approval.

From this point on, the following shall occur:

DECISION: PRESCRIBED PENALTY

If the player chooses this course of action, the following must occur:

1. The player notifies the coach of his decision prior to school the following day. A standard "Confirmation of Report Form" must be completed by the player and a parent/guardian and/or School Principal/HOLA and returned to school the following day.
2. The coach contacts the Region Coordinator and informs him of the player's decision. Prior to 9.30am a copy of the Confirmation of Report Form is faxed to the Regional Coordinator.
3. The Region Coordinator contacts the Schools Competitions Manager and informs him of the decision. The Schools Competitions Manager will notify any relevant community/school sporting bodies affected by the suspension.

DECISION: DISPUTE THE CHARGE

If the player chooses this course of action, the following must occur:

1. The player must notify his coach of his decision prior to school the following day.
2. The coach must notify the Region Coordinator (prior to 9.30am), that a tribunal hearing needs to be convened.
3. The Regional Coordinator then notifies the Schools Competitions Manager to arrange tribunal proceedings.

NOTE: The coach is responsible for arranging advocacy for a player should that player choose to dispute the charge.

ARRANGING THE HEARING

To ensure that the case in question is resolved as quickly as possible, the following procedure should be observed by the Schools Competitions Manager.

1. Arrange the case to be heard at the offices of the WAFC (Patersons Stadium). Case should be heard as soon as possible following the date of the charge.
2. Arrange for a panel of three delegates to attend the hearing. These should consist of:
Chairman, Secondary School Football Advisory Committee
Community Football Council or WAFC representative
School Sport WA representative
If one of these parties is unavailable then a representative of the SSFAC shall be the substitute.
3. Contact the teacher/coach of the player charged and informs them of the time and location of the hearing.
4. Contact the teacher/coach of the player infringed against (if required), and inform them of the time/location of the hearing.
5. Contact the Umpire Coordinator with the above-mentioned details and request he arrange for the charging umpire to attend the hearing.

MISCONDUCT

- The Coach is the key to a team's behaviour both on and off the field. All coaches are required to attend a coaches meeting with the Region Coordinator.
- Coaches who deliberately break the 'Codes of Behaviour' will be asked to step down.
- The send off rule will be applied in all games.
- Red and Yellow Cards will be used as in line with WAFC standard Order Off Rule. That is:
- Any Player or Official receiving a Red Card is automatically reported and shall take no further part in any match conducted on the day the offender was reported and is required to attend a Protests and Disputes Tribunal or where applicable, request the offer of the prescribed penalty.
- If a team's conduct is deemed by the umpires as not upholding the Codes of Conduct for the competition, behaviour points may be withheld.
- An independent Tribunal consisting of representatives as listed in point 2 above will hear any major serious charges.

ANY PLAYER OR OFFICIAL SUSPENDED BY EITHER A TRIBUNAL OR PRESCRIBED PENALTY WILL NOT BE PERMITTED TO PLAY, COACH OR PARTICIPATE IN ANY CAPACITY, IN ANY AFFILIATED DISTRICT COMPETITION INCLUDING SCHOOLS, SENIOR METROPOLITAN, JUNIOR COMMUNITY FOOTBALL OR REGIONAL FOOTBALL, FOR THE DURATION OF THE PENALTY. THE REVERSE ALSO APPLIES.

STANDARD RANGE OF PENALTIES FOR REPORTABLE OFFENCES:

* The WAFC Manager Community Development will adjudicate on any anomalies, inconsistencies or interpretive issues that arise in relation to the range of penalties. Any request for rulings will be initiated by the District Competition Director in writing to the WAFC Manager Community Development.

The *Standard Range of Penalties* shall apply to any Player or Official found guilty of a Specific Reportable Offence listed in Law 19.2.2 of the Laws of Australian Football or as described in the Rules and Regulations of the Controlling Body.

Where an Offender commits two (2) or more offences within the current 2 year period, then the “Second Offence” Range of Penalties shall be used to determine the penalty.

The “Second Offence” Range of Penalties have been set at double the “First Offence” Range of Penalties to clearly signify that repeat offenders will not be tolerated.

In determining an Offender’s penalty, the Tribunal shall use the *Standard Range of Penalties* and may increase the penalty after taking into consideration any injury sustained by a victim and/or any previous convictions of the offender prior to the last 2 years of the Tribunal sitting. The use of Suspended Sentences may be used as an additional penalty to the *Standard Range of Penalties*.

The Tribunal shall **not reduce** the minimum *Standard Range Penalties*, unless mitigating circumstances are established at the hearing. If mitigating circumstances are established, The Tribunal Chairman shall state and record the circumstances on the *Standard Disciplinary Record of Tribunal Proceedings* form.

THE STANDARD RANGE OF PENALTIES

(RELATING TO SPECIFIC REPORTABLE OFFENCES UNDER LAW 19.2.2)

(a) Making contact with an umpire;

1st Offence: Range: 4 weeks to 2 years

negligent 4-10 weeks, reckless 10 weeks- 1 year, intentional 1 -2 years

2nd Offence: Range 8 weeks to 4 years

negligent 8-20 weeks, reckless 20 weeks- 2 years, intentional 2 -4 years

Striking an Umpire;

1st Offence: Range: 2 years to Life

Negligent 2-4 years, reckless 4-10 years, intentional 10 years – Life

2nd Offence: Range: 4 years to Life

Negligent 4-8 years, reckless 8-20 years, intentional 20 years – Life

(b) Attempting to make contact with an Umpire;

1st Offence: Range: 2 weeks to 1 year

Negligent 2-5 weeks, reckless 5-10 weeks, intentional 10 weeks - 1 year.

2nd Offence: Range: 4 weeks to 2 years

Negligent 4-10 weeks, reckless 10 weeks – 1 year, intentional 1-2 years

Attempting to strike an Umpire;

1st Offence: Range: 1 year to 10 years

Negligent 1-2 years, reckless 2-5 years, intentional 5-10 years

2nd Offence: Range: 2 years to Life

Negligent 2-4 years, reckless 4-10 years, intentional 10 years -Life

(c) Using abusive, insulting, threatening or obscene language towards or in relation to an Umpire;

1st Offence: *abusive/obscene 2-4 weeks, insulting/threatening 4-10 weeks*

2nd Offence: *abusive/obscene 4-8 weeks, insulting/threatening 8-20 weeks*

(d) Behaving in an abusive, insulting, threatening or obscene manner towards or in relation to an Umpire;

1st Offence: *abusive/obscene 2-4 weeks, insulting/threatening 4-10 weeks*

2nd Offence: *abusive/obscene 4-8 weeks, insulting/threatening 8-20 weeks*

(e) Disputing a decision of an Umpire; (Prescribed Penalty offer – 1 week)

1st Offence: *Yellow Card by Umpire – Cool Off for 15 minutes*

2nd Offence: *1 week*

(f) Use of an Obscene gesture; (Prescribed Penalty offer – 1 week)

1st Offence: *1-2 weeks*

2nd Offence: *2-4 weeks.*

(g) Intentionally, recklessly or negligently:-

(i) Kicking another person;

1st Offence: Range: 2-10 weeks

negligent 2 weeks, reckless 3-6 weeks, intentional 6-10 weeks

2nd Offence: Range: 4-20 weeks

negligent 4 weeks, reckless 6-12 weeks, intentional 12-20 weeks

(ii) Striking another person;

1st Offence: Range: 2-10 weeks

negligent 2 weeks, reckless 3-6 weeks, intentional 6-10 weeks

2nd Offence: Range: 4-20 weeks

negligent 4 weeks, reckless 6-12 weeks, intentional 12-20 weeks

(iii) Tripping another person whether by hand, arm, foot or leg;

1st Offence: Range: 2-10 weeks

negligent 2 weeks, reckless 2-4 weeks, intentional 4-10 weeks

2nd Offence: Range: 4-20 weeks

negligent 4 weeks, reckless 4-8 weeks, intentional 8-20 weeks

- (iv) **Engaging in Time Wasting; (Prescribed Penalty offer – 1 week)**
1st Offence: Yellow Card by Umpire – Cool Off for 15 minutes
2nd Offence: 1 week
- (v) **Charging another person; (refer to law 15.4.4)**
1st Offence: Range: 2-10 weeks
negligent 2 weeks, reckless 3-6 weeks, intentional 6-10 weeks
- 2nd Offence: Range: 4-20 weeks*
negligent 4 weeks, reckless 6-12 weeks, intentional 12-20 weeks
- (vi) **Throwing or pushing another player after that player has taken a Mark, disposed of the football or after the football is otherwise out of play; (Prescribed Penalty offer – 1 week)**
1st Offence: Yellow Card by Umpire – Cool Off for 15 minutes
2nd Offence: 1 week
- (vii) **Engaging in rough play against an opponent which in the circumstances is unreasonable;**
Examples such as but not limited to: Using hands to claw, gouge or scratch an opponent in the region of the head, including the face, mouth, eyes, nose, and ears; Spear Tackles, Head Butting, Biting, Elbowing, Kneeing, Choking, Head Locking, Swinging an arm to the head region (“Coat Hanger”), Making unreasonable contact to an opponent who is marking or attempting to mark the football.
- 1st Offence: Range: 2-10 weeks*
negligent 2 weeks, reckless 3-6 weeks, intentional 6-10 weeks
- 2nd Offence: Range: 4-20 weeks*
negligent 4 weeks, reckless 6-12 weeks, intentional 12-20 weeks
- (viii) **Engaging in a melee, except where a player’s sole intention is to remove a teammate from the incident; (Prescribed Penalty offer – 1 week)**
1st Offence: Yellow Card by Umpire – Cool Off for 15 minutes
2nd Offence: 1 week
- (ix) **Kicking or otherwise causing the football to hit any part of a stadium roof’s structure;**
Not applicable in Western Australia
1st Offence: 1 week or a Fine equivalent to a match payment
2nd Offence: 2 weeks or a Fine equivalent to 2 match payments
- (x) **Spitting at or on another person;**
1st Offence: Range: 2-4 weeks
negligent 2 weeks, reckless 2-3 weeks, intentional 3-4 weeks
- 2nd Offence: Range: 4-8 weeks*
negligent 4 weeks, reckless 4-6 weeks, intentional 6-8 weeks

- (h) **Attempting to kick another person; (Prescribed Penalty offer – 1 week)**
1st Offence: Range: 1-5 weeks
negligent 1 week, reckless 1-2 weeks, intentional 2-5 weeks
- 2nd Offence: Range: 2-10 weeks*
negligent 2 weeks, reckless 2-4 weeks, intentional 4-10 weeks
- (i) **Attempting to strike another person; (Prescribed Penalty offer – 1 week)**
1st Offence: Range: 1-5 weeks
negligent 1 week, reckless 1-2 weeks, intentional 2-5 weeks
- 2nd Offence: Range: 2-10 weeks*
negligent 2 weeks, reckless 2-4 weeks, intentional 4-10 weeks
- (j) **Attempting to trip another person whether by hand, arm, foot or leg; (Prescribed Penalty offer – 1 week)**
1st Offence: Range: 1-5 weeks
negligent 1 week, reckless 1-2 weeks, intentional 2-5 weeks
- 2nd Offence: Range: 2-10 weeks*
negligent 2 weeks, reckless 2-4 weeks, intentional 4-10 weeks
- (k) **Intentionally shaking a goal or behind post when another player is preparing to Kick or is Kicking for Goal or after the Player has Kicked Goal and the ball is in transit; (Prescribed Penalty offer – 1 week)**
1st Offence: 1 week
2nd Offence: 2 weeks
- (l) **Wrestling another person; (Prescribed Penalty offer – 1 week)**
1st Offence: Yellow Card by Umpire – Cool Off for 15 minutes
2nd Offence: 1 week
- (m) **Using abusive, insulting, threatening or obscene language; (Prescribed Penalty offer – 1 week)**
1st Offence: abusive/obscene 1-2 weeks, insulting/threatening 2-5 weeks
2nd Offence: abusive/obscene 2-4 weeks, insulting/threatening 4-10 weeks
- (n) **Failing to leave the playing surface when directed to do so by a field umpire; (Prescribed Penalty offer – 2 weeks)**
1st Offence: 2 weeks
2nd Offence: 4 weeks
- (o) **Wearing boots, jewellery or equipment prohibited under Law 9; (Prescribed Penalty offer – 1 week)**
1st Offence: Yellow Card by Umpire – Cool Off for 15 minutes
2nd Offence: 1 week

(q) Any act of misconduct. (Prescribed Penalty offer – 2 weeks)

Examples such as but not limited to: Indecent Exposure, Biting, Instigating a Melee, Failing to follow the Direction of a Field Umpire or any Behaviour Detrimental to Football.

1st Offence: 2-4 weeks

2nd Offence: 4-8 weeks

or Law 20.2(f) below – misconduct of a serious nature

(RELATING TO THE SPECIFIC REPORTABLE OFFENCE UNDER THE ORDER OFF LAW 20.2)

20.2(f) An act of misconduct if the Umpire is of the opinion that the act constituting misconduct is serious in nature;

1st Offence: 3-6 weeks

2nd Offence: 6-12 weeks

Examples such as but not limited to **serious** acts of misconduct: Indecent Exposure, Biting, Instigating a Melee, Failing to follow the Direction of a Field Umpire or any Behaviour Detrimental to Football.

INVESTIGATION PROCEDURES / COMPLAINTS & APPEALS

Any school may refer a protest or charge, or report any infringement of the rules of the Laws of Australian Rules Football against any other school, player or official. School generated complaints may be lodged with the **SSFAC** within 48 hours of an alleged incident, on an official school letterhead signed by the school Principal and/or HOLA making the complaint on behalf of his school.

The **SSFAC** will determine whether an INVESTIGATIONS Panel, Appeals Committee or P & D tribunal will be convened to deal with any complaints that may not fit within normal disputes processes. All complaints will be dealt with in a time frame suitable to the **SSFAC**.

The **SSFAC** may request either written or in person accounts relevant to the investigation from either of the schools involved in the protest, charge or report. Both schools shall be given at least 24 hours notice to attend either an in person interview, tribunal or both.

Any school may appeal in writing against any imposed penalty by P & D Tribunal within forty eight (48) hours of receiving notification of this penalty. The **SSFAC** shall consider any such appeal, which must be accompanied by new evidence.

The decision of the **SSFAC** in regard to any appeal shall be **final** and in the case of a failed appeal. The **SSFAC** may ask for the matter to be referred to the WAFCDC for further consideration and a final determination.

The **SSFAC Chairman** reserves the right to accept or refuse the lodgement of any other complaint outside of the usual processes.

PROTESTS & DISPUTES TRIBUNAL

A Protests & Disputes Tribunal will be convened by the **SSFAC**. Schools may appeal to the **SSFAC** against the severity of tribunal penalties in writing, accompanied by new evidence within forty eight (48) hours of receiving notification of the original penalty.

SCHOOL and COMMUNITY FOOTBALL

- The WAFC sees the delivery of Australian Football as a partnership between schools and community groups.
- Schools recognise that sport is an aspect of the school curriculum and is an integral part of an individual's development.
- Community groups recognise the school system as an integral and positive part of football development and assist and encourage participation.
- Schools and community groups/clubs should establish links to promote continuity of delivery.
- The use of existing school facilities by community groups is encouraged.
- Schools should be receptive to interaction with community groups within and outside of school hours.
- The WAFC works closely with the following key advisory groups in designing and implementing quality football education programs
 - Education Advisory Group
 - Primary School Football Advisory Committee
 - Secondary School Football Advisory Committee
 - Schoolgirls Football Advisory Committee

PUBLIC STATEMENT

Public statements can only be made by the designated **WAFC spokesperson**.

SCHOOL RESPONSIBILITIES

- Attend competition launch / coaches meeting prior to the start of the competition.
- Supply timekeeper for HOME games.
- Supply interchange steward for finals games only.
- Supply correctly attired boundary umpire and goal umpire.
- Ensure all players are **suitably** attired in school playing apparel, with correct socks, shorts, boots and jumpers.
- Supply an accredited coach (i.e. Level One).
- **Home team** to forward results to your WAFC Football Development Officer following all fixtures. Please ensure full umpire's details, including address, are completed on match report form.
- If applicable, apply in writing to the WAFC for permission to include Year 10 students in the team.

WAFC DEVELOPMENT OFFICER RESPONSIBILITIES

- Attend competition launch / coaches meeting prior to the start of the competition
- Arrange schools into appropriate divisions
- Set fixtures for that district / region
- Collate results after each round of fixtures
- Maintain a premiership table for each division
- Be a contact for all schools for any queries
- Publish weekly match results on the District's website
- Liaise with schools and / or District Umpires Coach to provide field umpire for each match
- Liaise with schools to provide a Coach if one not available through existing school staff
- Identify schools that would benefit most from participating in the Second Tier Competition

WAFC RESPONSIBILITIES

- Develop, promote and coordinate a well organised competition for students in years 8 and 9
- Supply match football to each team
- Provide payment for umpires
- Supply score cards and match report sheets
- Promotion and publicity for the competition
- Assist with travel costs incurred by schools
- Promote and actively encourage accreditation of **all** school coaches
- Monitor Year 10 inclusion in teams

TROPHIES

- Each WAFL club's champion metropolitan and country school will be presented with a shield at a school assembly at the conclusion of the competition
- The Champion school to be awarded a WAFC Year 8/9 Schoolboys Cup and Championship medallions
- The Cup is a perpetual trophy and the school will keep a replica
- The runners-up to receive Grand Final medallions
- The best player in the Grand Final will receive the Ross Davis Medal. Last year's winner was Jye Clements from Darling Range Sports College (pictured receiving the medal from Ross Davis.)



2012 winner of the Ross Davis Medal was Jye Clements from Darling Range Sports College.

TALENT

WA STATE ACADEMY

The WA State Academy program is an elite football environment that focuses on individual player development. It is centred on the development of the person and their ability to contribute in a team environment.

The Academy is divided into two separate but closely aligned programs. The WA 16's State Academy is designed for players aged 16 and acts as the initial introduction to a state based elite football program. The WA 18's State Academy is the next phase of the Academy journey and caters for 17 and 18 year olds.

WA STATE ACADEMY - PHILOSOPHIES

- To select the most talented developing players available ie players who demonstrate the most distinct attributes to progress into WAFL senior football and / or AFL football;
- A year long commitment to academy members;
- A holistic approach to player development;
- Emphasise individual player development within a team context;
- Academy staff to work in partnership with WAFL staff to develop individual players;
- Involvement in the Academy does not automatically include participation in the NAB National Championships.

WA STATE ACADEMY - OBJECTIVES

- To create an environment that is enjoyable, positive and fosters individual learning styles;
- Contribute to the development of skills, physical attributes, football knowledge, personal growth and self esteem of all players;
- The Academy to be a key tool in the broader strategy of developing coaches;

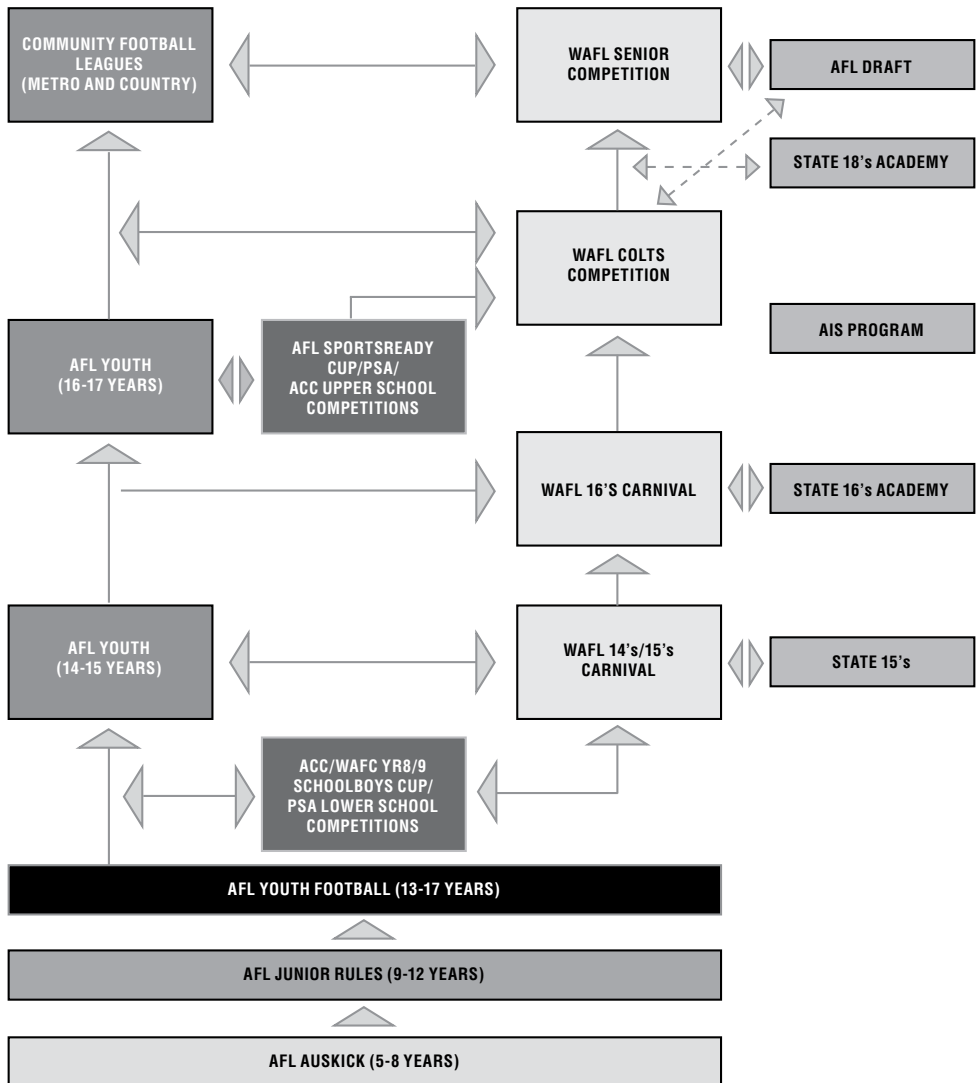
WA STATE ACADEMY – SELECTION PROCESS

- Nominations from WAFL clubs;
- Upon viewing the nominations and discussion with colts coaches and AFL Recruiting staff, State Academy selectors finalise composition of squad;
- The preferred pathway for all players is to be playing with their WAFL club;
- Selector's have the capacity to add players to the Academy as the season progresses;

TALENT IDENTIFICATION

- Providing a clear pathway to the top in a sport with limited international opportunity is vital to ensure the talented "natural" athlete selects Australian Football at an early age.
- The steps from junior mass participation to zone representation/opportunities at the 14's age level, leading to functional talent identification at intrastate and interstate competition from 15-18 clearly defined.
- The pinnacle opportunity for a junior Australian footballer for both optimal performance and identification is the National Championships conducted annually for players 16 and 18 years and under.
- The pathway leads from junior level to senior football via Country or State Leagues with the AFL as the clear destination for those wishing to achieve the ultimate. Players wishing to pursue an AFL career in WA must do so via the WAFL.
- Following is the career pathway for talented players:

WA MALE FOOTBALL PATHWAY



The above pathway is endorsed by the WAFC as the recommended progression for players playing football within Western Australia .

STATE REPRESENTATION GAMES

In reference to the NAB AFL Championships, State representation should be credited with local home and away games for their registered age group and team. This includes all competitions that hold a final series e.g. WAFL, District & Country.

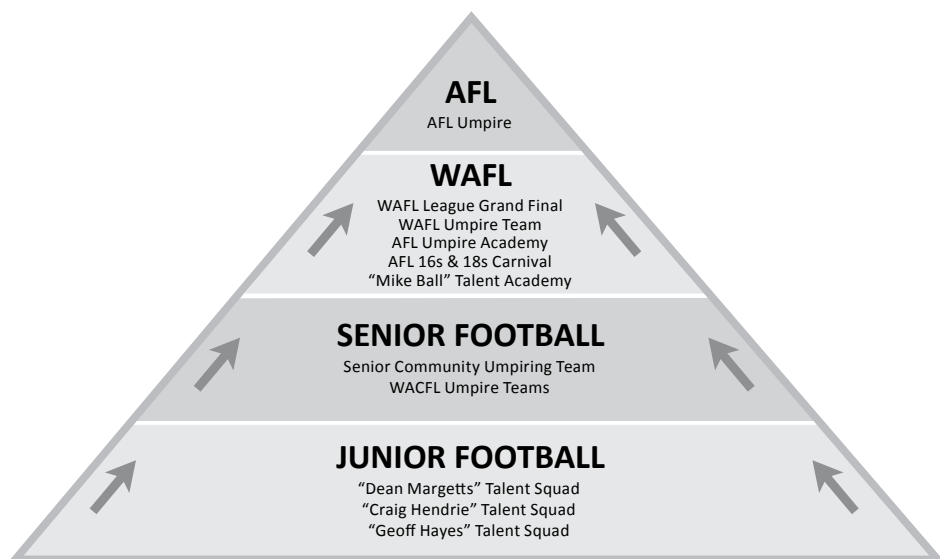
UMPIRING - GIVE UMPIRING A GO!

Umpiring teaches you 'life skills' such as tolerance, assertiveness, leadership and decision making.

Umpiring is a great way for both males and females to keep fit and involved in the game.

Umpiring allows you to earn money while servicing the game you love!!

Umpiring is a great opportunity. Do you have what it takes?



TO JOIN A JUNIOR UMPIRING GROUP, PLEASE GO TO: www.wafootball.com.au/umpiring/contacts

For further information contact WAFC Umpiring on 9381 5599



"It's a pretty obvious point, but every AFL umpire has to start somewhere... I started in juniors in 1996. I loved umpiring and the benefits that came with it from the first training night and the first game I umpired. It was a bit different though, at first, having the whistle on the fingers when I had been so used to just playing the game. But the knowledge and coaching I received at junior level gave me an outstanding foundation to allow me to perform as I do in the AFL competition today."

DEAN MARGETTS, AFL FIELD UMPIRE.



TIGERS
DISTRICT
"Growing our Great Game"



SHARKS
DISTRICT
"Growing our Great Game"



ROYALS
DISTRICT
"Growing our Great Game"



PEEL
DISTRICT
"Growing our Great Game"



DEMONS
DISTRICT
"Growing our Great Game"



BULLDOGS
DISTRICT
"Growing our Great Game"



LIONS
DISTRICT
"Growing our Great Game"



SWANS
DISTRICT
"Growing our Great Game"



FALCONS
DISTRICT
"Growing our Great Game"



